

# Product Datasheet

## Lambda Light Chain Antibody - Azide and BSA Free NB100-62139-1000ug

Unit Size: 1000 ug

Store at 4C short term. Aliquot and store at -20C long term. Avoid freeze-thaw cycles.

[www.novusbio.com](http://www.novusbio.com)



[technical@novusbio.com](mailto:technical@novusbio.com)

### Publications: 1

Protocols, Publications, Related Products, Reviews, Research Tools and Images at:  
[www.novusbio.com/NB100-62139](http://www.novusbio.com/NB100-62139)

Updated 10/23/2024 v.20.1

Earn rewards for product  
reviews and publications.

Submit a publication at [www.novusbio.com/publications](http://www.novusbio.com/publications)

Submit a review at [www.novusbio.com/reviews/destination/NB100-62139](http://www.novusbio.com/reviews/destination/NB100-62139)



**NB100-62139-1000ug**

Lambda Light Chain Antibody - Azide and BSA Free

**Product Information**

<b>Unit Size</b>	1000 ug
<b>Concentration</b>	1 mg/ml
<b>Storage</b>	Store at 4C short term. Aliquot and store at -20C long term. Avoid freeze-thaw cycles.
<b>Clonality</b>	Polyclonal
<b>Preservative</b>	No Preservative
<b>Isotype</b>	IgG
<b>Purity</b>	Immunogen affinity purified
<b>Buffer</b>	0.1M BBS (pH 8.2)

**Product Description**

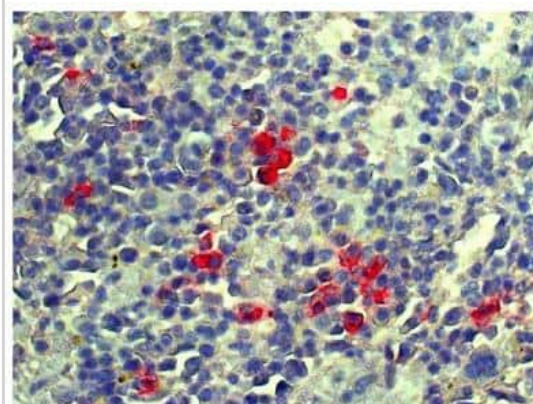
<b>Host</b>	Goat
<b>Gene ID</b>	3537
<b>Gene Symbol</b>	IGLC1
<b>Species</b>	Human, Mouse
<b>Reactivity Notes</b>	Human reactivity reported in (PMID: 31350616).
<b>Specificity/Sensitivity</b>	LAMBDA LIGHT CHAIN
<b>Immunogen</b>	Mouse paraproteins with lambda 1 and lambda 2 light chains

**Product Application Details**

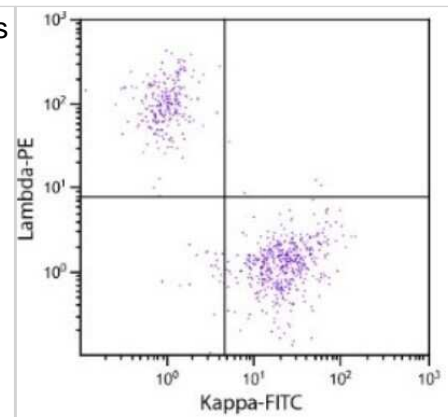
<b>Applications</b>	Western Blot, ELISA, Fluorophore-linked immunosorbent assay, Flow Cytometry, Immunocytochemistry/ Immunofluorescence, Immunohistochemistry, Immunohistochemistry-Frozen, Immunohistochemistry-Paraffin, Immunoprecipitation
<b>Recommended Dilutions</b>	Western Blot 1:100 - 1:2000, Flow Cytometry 1:10 - 1:1000, ELISA 1:100 - 1:2000, Immunohistochemistry, Immunocytochemistry/ Immunofluorescence 1:10 - 1:2000, Immunoprecipitation 1:10-1:500, Immunohistochemistry-Paraffin 1:10-1:500, Immunohistochemistry-Frozen 1:10-1:500, Fluorophore-linked immunosorbent assay

**Images**

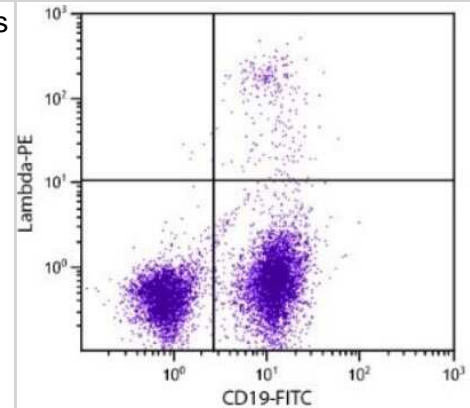
Immunohistochemistry-Paraffin: Lambda Light Chain Antibody [NB100-62139] - Mouse spleen section was stained with Goat Anti-Mouse Lambda-UNLB followed by Donkey Anti-Goat IgG(H+L), Mouse/Rat SP ads-AP Red AP, and hematoxylin.



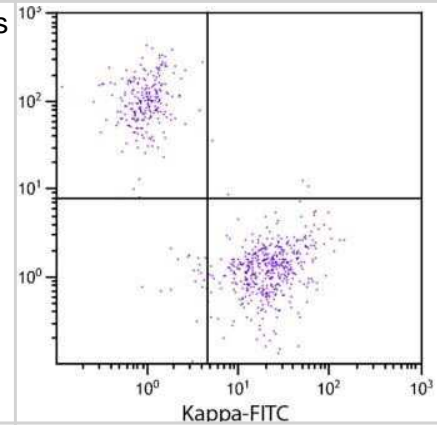
Flow Cytometry: Lambda Light Chain Antibody [NB100-62139] - Analysis using the TRITC conjugate of NB100-62139. Multiple staining of peripheral blood lymphocytes.



Flow Cytometry: Lambda Light Chain Antibody [NB100-62139] - Analysis of BALB/c splenocytes by multiple staining.



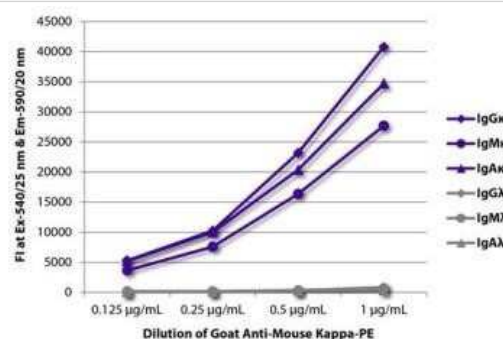
Flow Cytometry: Lambda Light Chain Antibody [NB100-62139] - Analysis using the Biotin conjugate of NB100-62139. Staining of Human peripheral blood lymphocytes with goat anti-Human Lambda-PE. and goat anti-Human Kappa-FITC



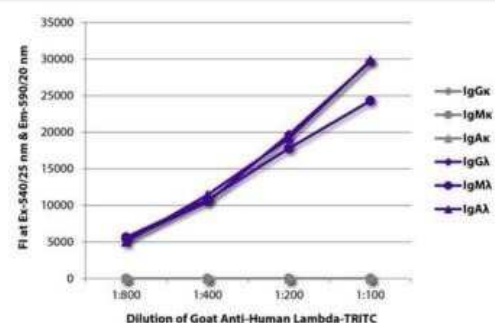
Flow Cytometry: Lambda Light Chain Antibody [NB100-62139] - Analysis using the PE conjugate of NB100-62139. Multiple staining of BALB/c splenocytes.



Fluorophore-linked immunosorbent assay: Lambda Light Chain Antibody [NB100-62139] - FLISA plate was coated with purified mouse IgG kappa, IgM kappa, IgA kappa, IgG alpha, IgM alpha, and IgA alpha. Immunoglobulins were detected with serially diluted Goat Anti-Mouse Kappa. Image using the PE format of this antibody.



Fluorophore-linked immunosorbent assay: Lambda Light Chain Antibody [NB100-62139] - FLISA plate was coated with purified human IgGκ, IgMκ, IgAκ, IgG alpha, IgM alpha IgA. Immunoglobulins were detected with serially diluted Goat Anti-Human Lambda-TRITC. Image using the TRITC format of this antibody.



## Publications

Schwaigerlehner L, Mayrhofer P, Diem M et al Germinality does not necessarily define mAb expression and thermal stability. Appl Microbiol Biotechnol. 2019-09-01 [PMID: 31350616] (FLOW, Human)

Details:

Citation using the Biotin version of this antibody.



### **Novus Biologicals USA**

10730 E. Briarwood Avenue  
Centennial, CO 80112  
USA  
Phone: 303.730.1950  
Toll Free: 1.888.506.6887  
Fax: 303.730.1966  
nb-customerservice@bio-techne.com

### **Bio-Techne Canada**

21 Canmotor Ave  
Toronto, ON M8Z 4E6  
Canada  
Phone: 905.827.6400  
Toll Free: 855.668.8722  
Fax: 905.827.6402  
canada.inquires@bio-techne.com

### **Bio-Techne Ltd**

19 Barton Lane  
Abingdon Science Park  
Abingdon, OX14 3NB, United Kingdom  
Phone: (44) (0) 1235 529449  
Free Phone: 0800 37 34 15  
Fax: (44) (0) 1235 533420  
info.EMEA@bio-techne.com

### **General Contact Information**

[www.novusbio.com](http://www.novusbio.com)  
Technical Support: nb-technical@bio-techne.com  
Orders: nb-customerservice@bio-techne.com  
General: novus@novusbio.com

### **Products Related to NB100-62139-1000ug**

HAF017	Rabbit anti-Goat IgG Secondary Antibody [HRP (Horseradish Peroxidase)]
HAF109	Donkey anti-Goat IgG Secondary Antibody [HRP (Horseradish Peroxidase)]
NB410-28088-1mg	Goat IgG Isotype Control
NB7552	Goat anti-Mouse Lambda Light Chain Secondary Antibody [HRP]

### **Limitations**

This product is for research use only and is not approved for use in humans or in clinical diagnosis. Primary Antibodies are guaranteed for 1 year from date of receipt.

For more information on our 100% guarantee, please visit [www.novusbio.com/guarantee](http://www.novusbio.com/guarantee)

Earn gift cards/discounts by submitting a review: [www.novusbio.com/reviews/submit/NB100-62139](http://www.novusbio.com/reviews/submit/NB100-62139)

Earn gift cards/discounts by submitting a publication using this product:  
[www.novusbio.com/publications](http://www.novusbio.com/publications)



