

# Product Datasheet

## HLA-DR Antibody (L203) [FITC]

### FAB4869F-0.1ml

Unit Size: 0.1 ml

Store at 4C in the dark.

[www.novusbio.com](http://www.novusbio.com)



[technical@novusbio.com](mailto:technical@novusbio.com)

#### Publications: 2

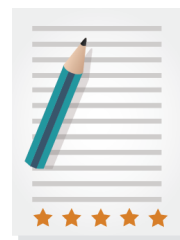
Protocols, Publications, Related Products, Reviews, Research Tools and Images at:  
[www.novusbio.com/FAB4869F](http://www.novusbio.com/FAB4869F)

Updated 3/10/2025 v.20.1

Earn rewards for product reviews and publications.

Submit a publication at [www.novusbio.com/publications](http://www.novusbio.com/publications)

Submit a review at [www.novusbio.com/reviews/destination/FAB4869F](http://www.novusbio.com/reviews/destination/FAB4869F)



**FAB4869F-0.1ml**

HLA-DR Antibody (L203) [FITC]

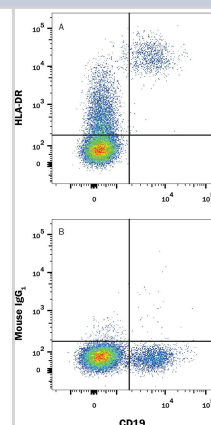
Product Information	
Unit Size	0.1 ml
Concentration	Please see the vial label for concentration. If unlisted please contact technical services.
Storage	Store at 4C in the dark.
Clonality	Monoclonal
Clone	L203
Preservative	0.05% Sodium Azide
Isotype	IgG1
Conjugate	FITC
Purity	Protein A or G purified from hybridoma culture supernatant
Buffer	PBS

Product Description	
Host	Mouse
Gene ID	3122
Gene Symbol	HLA-DRA
Species	Human
Specificity/Sensitivity	Detects human HLA-DR.
Immunogen	RPMI 8866 human lymphoblastoid cells Accession # P01903

Product Application Details	
Applications	Flow Cytometry
Recommended Dilutions	Flow Cytometry 10 uL/10 <sup>6</sup> cells
Application Notes	Optimal dilution of this antibody should be experimentally determined.

**Images**

Human peripheral blood lymphocytes were stained with (A) Mouse Anti-Human HLA-DR Fluorescein-conjugated Monoclonal Antibody (Catalog # FAB4869F) or (B) isotype control antibody (Catalog # IC002F) and Mouse anti-Human CD19 APC-conjugated Monoclonal Antibody (Catalog # FAB4867A). View our protocol for [Staining Membrane-associated Proteins](#).



## Publications

Albert R, Vereb Z, Csomos K, Moe M, Johnsen E, Olstad O, Nicolaissen B, Rajnavolgyi E, Fesus L, Berta A, Petrovski G Cultivation and characterization of cornea limbal epithelial stem cells on lens capsule in animal material-free medium. PLoS ONE, 2012-10-09;7(10):e47187. 2012-10-09 [PMID: 23056608] (Flow Cytometry, Human)

Vereb Z, Lumi X, Andjelic S, Globocnik-Petrovic M, Urbancic M, Hawlina M, Facsko A, Petrovski G Functional and molecular characterization of ex vivo cultured epiretinal membrane cells from human proliferative diabetic retinopathy. Biomed Res Int, 2013-10-01;2013(0):492376. 2013-10-01 [PMID: 24195074] (Flow Cytometry, Human)



### Novus Biologicals USA

10730 E. Briarwood Avenue  
Centennial, CO 80112  
USA

Phone: 303.730.1950

Toll Free: 1.888.506.6887

Fax: 303.730.1966

nb-customerservice@bio-techne.com

### Bio-Techne Canada

21 Canmotor Ave  
Toronto, ON M8Z 4E6  
Canada

Phone: 905.827.6400

Toll Free: 855.668.8722

Fax: 905.827.6402

canada.inquires@bio-techne.com

### Bio-Techne Ltd

19 Barton Lane  
Abingdon Science Park  
Abingdon, OX14 3NB, United Kingdom

Phone: (44) (0) 1235 529449

Free Phone: 0800 37 34 15

Fax: (44) (0) 1235 533420

info.EMEA@bio-techne.com

### General Contact Information

[www.novusbio.com](http://www.novusbio.com)

Technical Support: [nb-technical@bio-techne.com](mailto:nb-technical@bio-techne.com)

Orders: [nb-customerservice@bio-techne.com](mailto:nb-customerservice@bio-techne.com)

General: [novus@novusbio.com](mailto:novus@novusbio.com)

### Limitations

This product is for research use only and is not approved for use in humans or in clinical diagnosis. Primary Antibodies are guaranteed for 1 year from date of receipt.

For more information on our 100% guarantee, please visit [www.novusbio.com/guarantee](http://www.novusbio.com/guarantee)

Earn gift cards/discounts by submitting a review: [www.novusbio.com/reviews/submit/FAB4869F](http://www.novusbio.com/reviews/submit/FAB4869F)

Earn gift cards/discounts by submitting a publication using this product:  
[www.novusbio.com/publications](http://www.novusbio.com/publications)



