

Product Datasheet

M.O.M.(R) (Mouse-On-Mouse) Elite(R) IgG HRP Immunodetection Kit PK-2200-NB

Unit Size: 1 Kit

Store at 4C. Do not freeze.

www.novusbio.com



technical@novusbio.com

Protocols, Publications, Related Products, Reviews, Research Tools and Images at:
www.novusbio.com/PK-2200-NB

Updated 10/23/2024 v.20.1

Earn rewards for product
reviews and publications.

Submit a publication at www.novusbio.com/publications

Submit a review at www.novusbio.com/reviews/destination/PK-2200-NB



PK-2200-NB

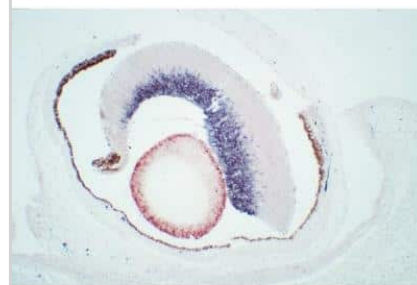
M.O.M.(R) (Mouse-On-Mouse) Elite(R) IgG HRP Immunodetection Kit

Product Information	
Unit Size	1 Kit
Concentration	Concentration is not relevant for this product. Please see the protocols for proper use of this product.
Storage	Store at 4C. Do not freeze.
Product Description	
Description	<p>Features:</p> <p>Significant reduction of endogenous mouse Ig staining when using mouse primary antibodies on mouse tissue</p> <p>Clear, crisp specific staining of antigens of interest</p> <p>Based on ImmPRESS(R) reagent protocols</p> <p>Procedures are simple and easy to follow</p> <p>No tedious calculations or antibody prebinding steps required</p>
Species	Mouse
Kit Components	M.O.M.(R) (Mouse-On-Mouse) Protein Concentrate (6 mL), M.O.M.(R) (Mouse-On-Mouse) Ig Blocking Reagent (1 mL), M.O.M.(R) (Mouse-On-Mouse) Biotinylated Anti-Mouse IgG Reagent (0.1 mL), VECTASTAIN(R) Elite ABC Reagent A (1 mL), VECTASTAIN(R) Elite ABC Reagent B (1 mL)
Notes	This product is manufactured by Vector Laboratories and distributed by Novus Biologicals.
Product Application Details	
Applications	Western Blot, Immunocytochemistry/ Immunofluorescence, Immunohistochemistry
Recommended Dilutions	Western Blot, Immunohistochemistry, Immunocytochemistry/ Immunofluorescence
Application Notes	The Vector M.O.M.(R) (Mouse-On-Mouse) Elite(R) IgG Immunodetection Kit contains enough stock reagents to produce about 25 ml of working solution which is generally sufficient to stain approximately 250 tissue section

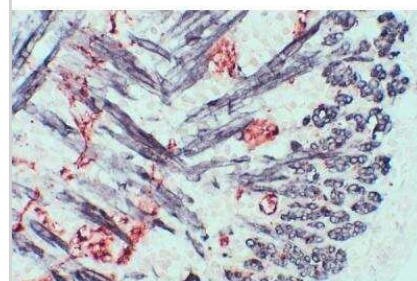


Images

Immunohistochemistry: M.O.M.(R) (Mouse-On-Mouse) Elite(R) IgG HRP Immunodetection Kit [PK-2200-NB] - Mouse, Newborn (eye, double label): GFAP (m), M.O.M.(R) (Mouse-On-Mouse) Elite(R) IgG HRP Immunodetection kit, Vector NovaRED substrate (red); Synapsin (m), MOM Peroxidase Kit, DAB+Ni substrate (gray/black). Note contrast with endogenous pigment (brown) seen in surrounding tissues.



Immunohistochemistry: M.O.M.(R) (Mouse-On-Mouse) Elite(R) IgG HRP Immunodetection Kit [PK-2200-NB] - Mouse, Newborn (tongue, double label): Synapsin (m), , Vector NovaRED substrate (red); Desmin (m), M.O.M.(R) (Mouse-On-Mouse) Elite(R) IgG HRP Immunodetection kit, DAB+Ni substrate (gray/black).



M.O.M.(R) (Mouse-On-Mouse) Elite(R) IgG HRP Immunodetection Kit [PK-2200-NB] - M.O.M.(R) (Mouse-On-Mouse) Elite(R) IgG HRP Immunodetection kit





Novus Biologicals USA

10730 E. Briarwood Avenue
Centennial, CO 80112
USA
Phone: 303.730.1950
Toll Free: 1.888.506.6887
Fax: 303.730.1966
nb-customerservice@bio-techne.com

Bio-Techne Canada

21 Canmotor Ave
Toronto, ON M8Z 4E6
Canada
Phone: 905.827.6400
Toll Free: 855.668.8722
Fax: 905.827.6402
canada.inquires@bio-techne.com

Bio-Techne Ltd

19 Barton Lane
Abingdon Science Park
Abingdon, OX14 3NB, United Kingdom
Phone: (44) (0) 1235 529449
Free Phone: 0800 37 34 15
Fax: (44) (0) 1235 533420
info.EMEA@bio-techne.com

General Contact Information

www.novusbio.com
Technical Support: nb-technical@bio-techne.com
Orders: nb-customerservice@bio-techne.com
General: novus@novusbio.com

Limitations

This product is for research use only and is not approved for use in humans or in clinical diagnosis. Kits are guaranteed for 6 months from date of receipt.

For more information on our 100% guarantee, please visit www.novusbio.com/guarantee

Earn gift cards/discounts by submitting a review: www.novusbio.com/reviews/submit/PK-2200-NB

Earn gift cards/discounts by submitting a publication using this product:
www.novusbio.com/publications

