

Product Datasheet

HMCEs Antibody NBP2-76818

Unit Size: 100 ul

Store at 2 - 8 C / 1 year from date of receipt

www.novusbio.com



technical@novusbio.com

Protocols, Publications, Related Products, Reviews, Research Tools and Images at:
www.novusbio.com/NBP2-76818

Updated 10/10/2022 v.20.1

Earn rewards for product
reviews and publications.

Submit a publication at www.novusbio.com/publications

Submit a review at www.novusbio.com/reviews/destination/NBP2-76818



NBP2-76818

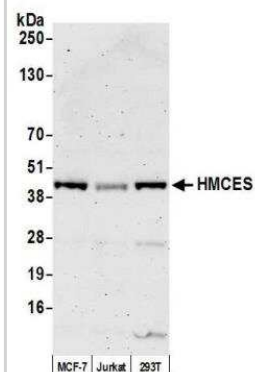
HMCES Antibody

Product Information	
Unit Size	100 ul
Concentration	Please see the vial label for concentration. If unlisted please contact technical services.
Storage	Store at 2 - 8 C / 1 year from date of receipt
Clonality	Polyclonal
Preservative	0.09% Sodium Azide
Isotype	IgG
Purity	Affinity purified
Buffer	Tris-buffered Saline containing 0.1% BSA
Product Description	
Host	Rabbit
Gene ID	56941
Gene Symbol	HMCES
Species	Human
Immunogen	The epitope recognized by NBP2-76818 maps to a region between residue 66 of human UPF0361 protein C3orf37 using the numbering given in entry Q96FZ2.1 (GeneID 56941).
Product Application Details	
Applications	Western Blot, Immunoprecipitation
Recommended Dilutions	Western Blot 1:1000, Immunoprecipitation 20-40 ul/mg lysate

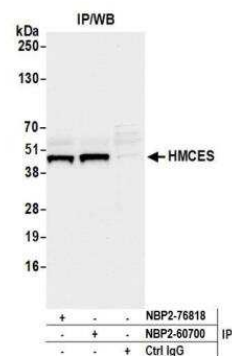


Images

Western Blot: HMCES Antibody [NBP2-76818] - Detection of human HMCES by western blot of immunoprecipitates. Samples: Whole cell lysate (1.0 mg per IP reaction; 20% of IP loaded) from MCF7 cells prepared using NETN lysis buffer. Antibodies: Affinity purified Rabbit anti-HMCES antibody NBP2-76818 used for IP at 40 ul per reaction. For blotting immunoprecipitated HMCES, NBP2-76818 was used at 1:100. Detection: Chemiluminescence with an exposure time time of 3 seconds.



Immunoprecipitation: HMCES Antibody [NBP2-76818] - Detection of human HMCES by western blot of immunoprecipitates. Samples: Whole cell lysate (1.0 mg per IP reaction; 20% of IP loaded) from MCF7 cells prepared using NETN lysis buffer. Antibodies: Affinity purified Rabbit anti-HMCES antibody NBP2-60700 used for IP at 40 ul per reaction. HMCES was also immunoprecipitated by rabbit anti-HMCES antibody NBP2-76818. For blotting immunoprecipitated HMCES, NBP2-76818 was used at 1:100. Detection: Chemiluminescence with an exposure time time of 3 seconds.





Novus Biologicals USA

10730 E. Briarwood Avenue
Centennial, CO 80112
USA
Phone: 303.730.1950
Toll Free: 1.888.506.6887
Fax: 303.730.1966
nb-customerservice@bio-techne.com

Bio-Techne Canada

21 Canmotor Ave
Toronto, ON M8Z 4E6
Canada
Phone: 905.827.6400
Toll Free: 855.668.8722
Fax: 905.827.6402
canada.inquires@bio-techne.com

Bio-Techne Ltd

19 Barton Lane
Abingdon Science Park
Abingdon, OX14 3NB, United Kingdom
Phone: (44) (0) 1235 529449
Free Phone: 0800 37 34 15
Fax: (44) (0) 1235 533420
info.EMEA@bio-techne.com

General Contact Information

www.novusbio.com
Technical Support: nb-technical@bio-techne.com
Orders: nb-customerservice@bio-techne.com
General: novus@novusbio.com

Limitations

This product is for research use only and is not approved for use in humans or in clinical diagnosis. Primary Antibodies are guaranteed for 1 year from date of receipt.

For more information on our 100% guarantee, please visit www.novusbio.com/guarantee

Earn gift cards/discounts by submitting a review: www.novusbio.com/reviews/submit/NBP2-76818

Earn gift cards/discounts by submitting a publication using this product:
www.novusbio.com/publications

