

# Product Datasheet

## TET2 Antibody (CL6873) - BSA Free NBP2-76510

Unit Size: 100 ul

Store at 4C short term. Aliquot and store at -20C long term. Avoid freeze-thaw cycles.

[www.novusbio.com](http://www.novusbio.com)



[technical@novusbio.com](mailto:technical@novusbio.com)

Protocols, Publications, Related Products, Reviews, Research Tools and Images at:  
[www.novusbio.com/NBP2-76510](http://www.novusbio.com/NBP2-76510)

Updated 9/9/2025 v.20.1

Earn rewards for product  
reviews and publications.

Submit a publication at [www.novusbio.com/publications](http://www.novusbio.com/publications)

Submit a review at [www.novusbio.com/reviews/destination/NBP2-76510](http://www.novusbio.com/reviews/destination/NBP2-76510)



**NBP2-76510**

TET2 Antibody (CL6873) - BSA Free

**Product Information**

<b>Unit Size</b>	100 ul
<b>Concentration</b>	Concentrations vary lot to lot. See vial label for concentration. If unlisted please contact technical services.
<b>Storage</b>	Store at 4C short term. Aliquot and store at -20C long term. Avoid freeze-thaw cycles.
<b>Clonality</b>	Monoclonal
<b>Clone</b>	CL6873
<b>Preservative</b>	0.02% Sodium Azide
<b>Isotype</b>	IgG2b
<b>Purity</b>	Protein A purified
<b>Buffer</b>	PBS, pH 7.2, containing 40% glycerol

**Product Description**

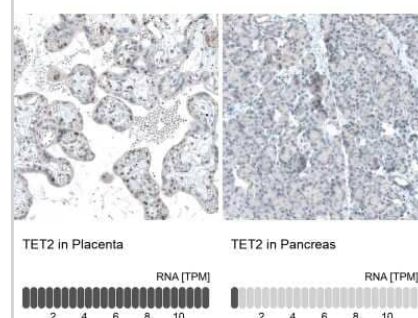
<b>Description</b>	Novus Biologicals Mouse TET2 Antibody (CL6873) - BSA Free (NBP2-76510) is a monoclonal antibody validated for use in IHC, WB and ICC/IF. All Novus Biologicals antibodies are covered by our 100% guarantee.
<b>Host</b>	Mouse
<b>Gene ID</b>	54790
<b>Gene Symbol</b>	TET2
<b>Species</b>	Human
<b>Reactivity Notes</b>	Rat (84%), Mouse (89%).
<b>Immunogen</b>	This antibody was developed using a synthetic peptide derived from Q6N021, with the exact immunogen sequence remaining proprietary.

**Product Application Details**

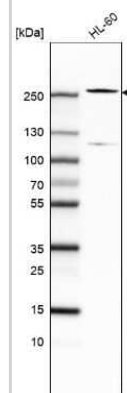
<b>Applications</b>	Western Blot, Immunohistochemistry-Paraffin, Immunocytochemistry/Immunofluorescence, Immunohistochemistry
<b>Recommended Dilutions</b>	Western Blot 1 ug/ml, Immunohistochemistry 1:20 - 1:50, Immunocytochemistry/Immunofluorescence 2-10 ug/ml, Immunohistochemistry-Paraffin 1:20 - 1:50
<b>Application Notes</b>	For IHC-Paraffin, HIER pH 6 retrieval is recommended. ICC/IF, Fixation Permeabilization: Use PFA/Triton X-100.

**Images**

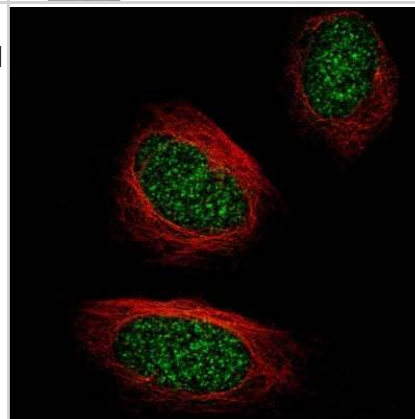
Immunohistochemistry-Paraffin: TET2 Antibody (CL6873) [NBP2-76510]  
- Analysis in human placenta and pancreas tissues. Corresponding TET2 RNA-seq data are presented for the same tissues.



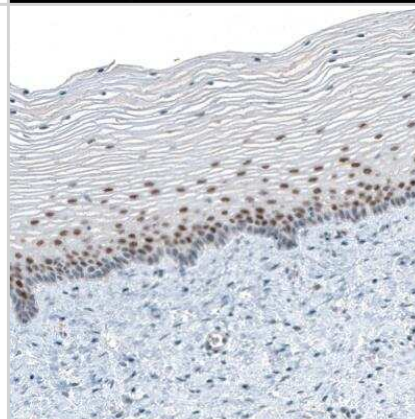
Western Blot: TET2 Antibody (CL6873) [NBP2-76510] - Analysis in human cell line HL-60.



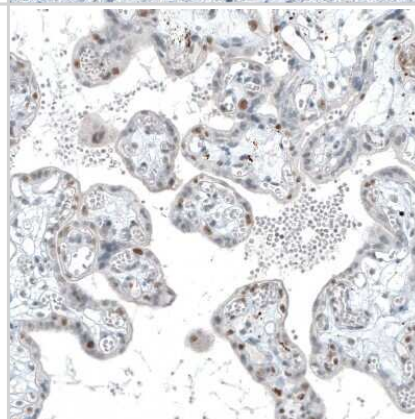
Immunocytochemistry/Immunofluorescence: TET2 Antibody (CL6873) [NBP2-76510] - Staining of U-2 OS cells using the Anti-TET2 monoclonal antibody, showing specific staining in the nucleus in green. Microtubule- and nuclear probes are visualized in red and blue, respectively (where available).



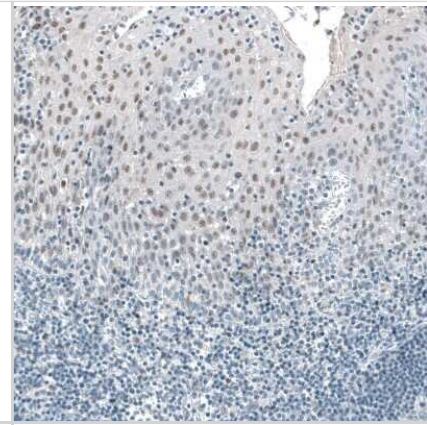
Immunohistochemistry-Paraffin: TET2 Antibody (CL6873) [NBP2-76510] - Staining of human uterine cervix shows moderate nuclear positivity in squamous epithelial cells.



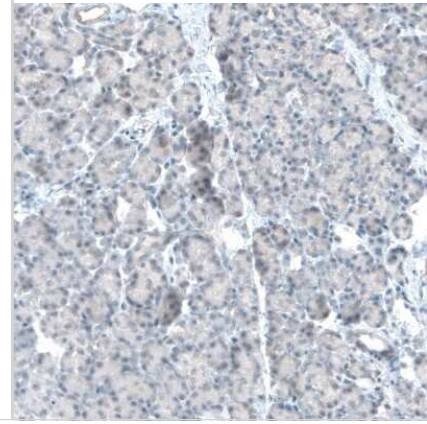
Immunohistochemistry-Paraffin: TET2 Antibody (CL6873) [NBP2-76510] - Staining of human placenta shows moderate nuclear positivity in a subset of trophoblastic cells.



Immunohistochemistry-Paraffin: TET2 Antibody (CL6873) [NBP2-76510]  
- Staining of human tonsil shows weak to moderate nuclear positivity in squamous epithelial cells.



Immunohistochemistry-Paraffin: TET2 Antibody (CL6873) [NBP2-76510]  
- Staining of human pancreas shows no nuclear positivity in exocrine glandular cells as expected.





### **Novus Biologicals USA**

10730 E. Briarwood Avenue  
Centennial, CO 80112  
USA  
Phone: 303.730.1950  
Toll Free: 1.888.506.6887  
Fax: 303.730.1966  
nb-customerservice@bio-techne.com

### **Bio-Techne Canada**

21 Canmotor Ave  
Toronto, ON M8Z 4E6  
Canada  
Phone: 905.827.6400  
Toll Free: 855.668.8722  
Fax: 905.827.6402  
canada.inquires@bio-techne.com

### **Bio-Techne Ltd**

19 Barton Lane  
Abingdon Science Park  
Abingdon, OX14 3NB, United Kingdom  
Phone: (44) (0) 1235 529449  
Free Phone: 0800 37 34 15  
Fax: (44) (0) 1235 533420  
info.EMEA@bio-techne.com

### **General Contact Information**

www.novusbio.com  
Technical Support: nb-technical@bio-techne.com  
Orders: nb-customerservice@bio-techne.com  
General: novus@novusbio.com

### **Products Related to NBP2-76510**

---

HAF007	Goat anti-Mouse IgG Secondary Antibody [HRP]
NB720-B	Rabbit anti-Mouse IgG (H+L) Secondary Antibody [Biotin]
NBP2-27231	Mouse IgG2b Isotype Control (MPC-11)
NBP2-27465PEP	TET2 Antibody Blocking Peptide

---

### **Limitations**

This product is for research use only and is not approved for use in humans or in clinical diagnosis. Primary Antibodies are guaranteed for 1 year from date of receipt.

For more information on our 100% guarantee, please visit [www.novusbio.com/guarantee](http://www.novusbio.com/guarantee)

Earn gift cards/discounts by submitting a review: [www.novusbio.com/reviews/submit/NBP2-76510](http://www.novusbio.com/reviews/submit/NBP2-76510)

Earn gift cards/discounts by submitting a publication using this product:  
[www.novusbio.com/publications](http://www.novusbio.com/publications)

