

Product Datasheet

ATF6 Antibody (2358C) NBP2-76329

Unit Size: 0.1 mg

Store at 4C for up to 3 months. For longer storage, aliquot and store at -20C.

www.novusbio.com



technical@novusbio.com

Publications: 1

Protocols, Publications, Related Products, Reviews, Research Tools and Images at:
www.novusbio.com/NBP2-76329

Updated 8/16/2021 v.20.1

Earn rewards for product
reviews and publications.

Submit a publication at www.novusbio.com/publications

Submit a review at www.novusbio.com/reviews/destination/NBP2-76329



NBP2-76329

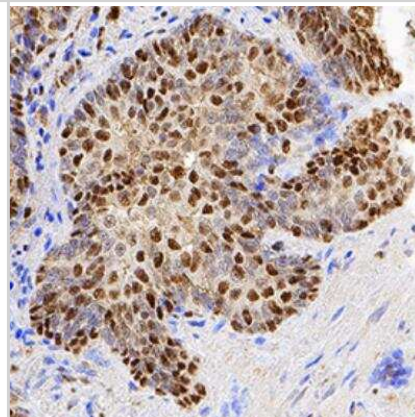
ATF6 Antibody (2358C)

Product Information	
Unit Size	0.1 mg
Concentration	1.0 mg/ml
Storage	Store at 4C for up to 3 months. For longer storage, aliquot and store at -20C.
Clonality	Monoclonal
Clone	2358C
Preservative	0.02% Sodium Azide
Isotype	IgG
Purity	Protein A or G purified
Buffer	PBS
Product Description	
Host	Rabbit
Gene ID	22926
Gene Symbol	ATF6
Species	Human, Mouse, Rat
Immunogen	Partial recombinant human ATF6 protein (amino acids 1-192) [UniProt P18850]
Product Application Details	
Applications	Western Blot, Flow Cytometry, Flow (Intracellular), Immunocytochemistry/Immunofluorescence, Immunohistochemistry, Immunohistochemistry-Paraffin
Recommended Dilutions	Western Blot 0.05 ug/ml, Flow Cytometry 0.25 ug/million cells, Immunohistochemistry 0.3 - 2 ug/ml, Immunocytochemistry/Immunofluorescence 5 - 15 ug/ml, Immunohistochemistry-Paraffin 0.3 - 2 ug/ml, Flow (Intracellular) 0.25 ug/million cells

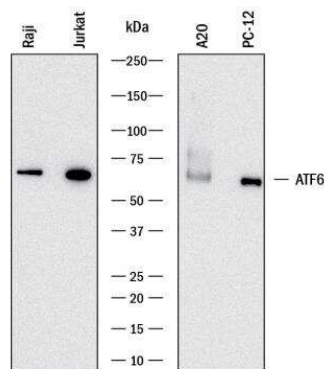


Images

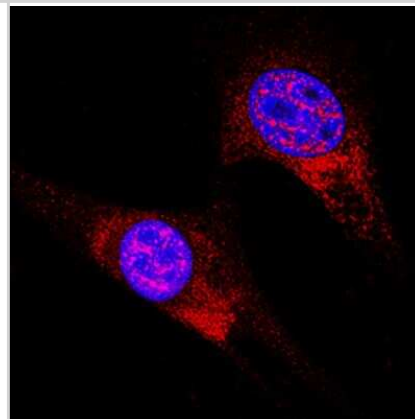
Immunohistochemistry: ATF6 Antibody (2358C) [NBP2-76329] - ATF6 was detected in immersion fixed paraffin-embedded sections of human prostate using Rabbit Anti-Human/Mouse/Rat ATF6 Monoclonal Antibody (Catalog # NBP2-76329) at 0.3 ug/mL for 1 hour at room temperature followed by incubation with the Anti-Rabbit IgG VisUCyte (TM) HRP Polymer Antibody (Catalog # VC003). Before incubation with the primary antibody, tissue was subjected to heat-induced epitope retrieval using Antigen Retrieval Reagent-Basic (Catalog # CTS013). Tissue was stained using DAB (brown) and counterstained with hematoxylin (blue). Specific staining was localized to cytoplasm and nuclei.



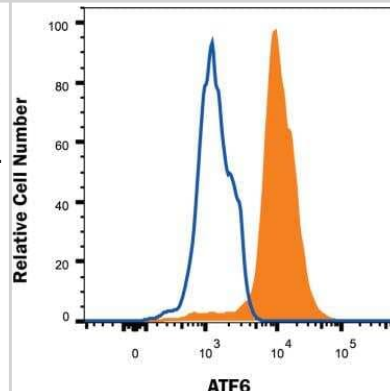
Western Blot: ATF6 Antibody [NBP2-76329] - Western blot shows lysates of Raji human Burkitt's lymphoma cell line, Jurkat human acute T cell leukemia cell line, A20 mouse B cell lymphoma cell line, and PC-12 rat adrenal pheochromocytoma cell line. PVDF membrane was probed with 0.05 ug/mL of Rabbit Anti-Human/Mouse/Rat ATF6 Monoclonal Antibody (Catalog # NBP2-76329) followed by HRP-conjugated Anti-Rabbit IgG Secondary Antibody (Catalog # HAF008). A specific band was detected for ATF6 at approximately 70 kDa (as indicated). This experiment was conducted under reducing conditions.



Immunocytochemistry/Immunofluorescence: ATF6 Antibody [NBP2-76329] - ATF6 was detected in immersion fixed A549 human lung carcinoma cell line using Rabbit Anti-Human/Mouse/Rat ATF6 Monoclonal Antibody (Catalog # NBP2-76329) at 8 ug/mL for 3 hours at room temperature. Cells were stained using the NorthernLights™ 557-conjugated Anti-Rabbit IgG Secondary Antibody (red; Catalog # NL004) and counterstained with DAPI (blue). Specific staining was localized to cytoplasm and nuclei.



Flow Cytometry: ATF6 Antibody [NBP2-76329] - MCF-7 human breast cancer cell line was stained with Rabbit Anti-Human/Mouse/Rat ATF6 Monoclonal Antibody (Catalog # NBP2-76329, filled histogram) or Rabbit IgG control antibody (Catalog # MAB1050, open histogram) followed by APC-conjugated Anti-Rabbit IgG Secondary Antibody (Catalog # F0111). To facilitate intracellular staining, cells were fixed and permeabilized with FlowX FoxP3 Fixation & Permeabilization Buffer Kit (Catalog # FC012).



Publications

SOZEN E, DEMIREL-YALCINER T, DAMLA DEMIR D Et al. SREBP1c silencing reduces endoplasmic reticulum stress and related apoptosis in oleic acid induced lipid accumulation Marmara Medical Journal 2021-10-31 (ICC/IF, Mouse)



Novus Biologicals USA

10730 E. Briarwood Avenue
Centennial, CO 80112
USA

Phone: 303.730.1950

Toll Free: 1.888.506.6887

Fax: 303.730.1966

nb-customerservice@bio-techne.com

Bio-Techne Canada

21 Canmotor Ave
Toronto, ON M8Z 4E6
Canada

Phone: 905.827.6400

Toll Free: 855.668.8722

Fax: 905.827.6402

canada.inquires@bio-techne.com

Bio-Techne Ltd

19 Barton Lane
Abingdon Science Park
Abingdon, OX14 3NB, United Kingdom

Phone: (44) (0) 1235 529449

Free Phone: 0800 37 34 15

Fax: (44) (0) 1235 533420

info.EMEA@bio-techne.com

General Contact Information

www.novusbio.com

Technical Support: nb-technical@bio-techne.com

Orders: nb-customerservice@bio-techne.com

General: novus@novusbio.com

Limitations

This product is for research use only and is not approved for use in humans or in clinical diagnosis. Primary Antibodies are guaranteed for 1 year from date of receipt.

For more information on our 100% guarantee, please visit www.novusbio.com/guarantee

Earn gift cards/discounts by submitting a review: www.novusbio.com/reviews/submit/NBP2-76329

Earn gift cards/discounts by submitting a publication using this product:
www.novusbio.com/publications

