

# Product Datasheet

## Recombinant Mouse RELM gamma Protein NBP2-76306-5ug

Unit Size: 5 ug

Store at -20 to -70C as supplied. After reconstitution, store at 2 to 8C for 1 month and at -20 to -70C for long term storage. Avoid repeated freeze-thaw cycles.

[www.novusbio.com](http://www.novusbio.com)



[technical@novusbio.com](mailto:technical@novusbio.com)

Protocols, Publications, Related Products, Reviews, Research Tools and Images at:  
[www.novusbio.com/NBP2-76306](http://www.novusbio.com/NBP2-76306)

Updated 10/3/2023 v.20.1

Earn rewards for product  
reviews and publications.

Submit a publication at [www.novusbio.com/publications](http://www.novusbio.com/publications)

Submit a review at [www.novusbio.com/reviews/destination/NBP2-76306](http://www.novusbio.com/reviews/destination/NBP2-76306)



**NBP2-76306-5ug**

Recombinant Mouse RELM gamma Protein

**Product Information**

<b>Unit Size</b>	5 ug
<b>Concentration</b>	Lyoph
<b>Storage</b>	Store at -20 to -70C as supplied. After reconstitution, store at 2 to 8C for 1 month and at -20 to -70C for long term storage. Avoid repeated freeze-thaw cycles.
<b>Preservative</b>	No Preservative
<b>Reconstitution Instructions</b>	Sterile water at 0.1 mg/mL
<b>Purity</b>	>95%, by SDS-PAGE
<b>Buffer</b>	Lyophilized from a sterile (0.2 micron) filtered aqueous solution containing 10 mM sodium phosphate, pH 7.5
<b>Target Molecular Weight</b>	18.9 kDa

**Product Description**

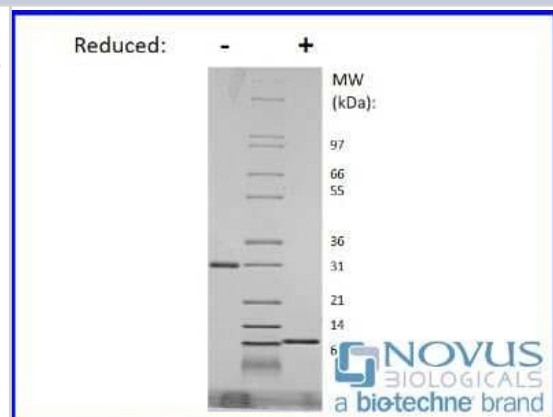
<b>Description</b>	For prolonged storage, dilute to working aliquots in a 0.1% BSA solution, store at -80C and avoid repeat freeze thaws.  Expiration Date: 12 months from date of receipt when stored at -20C to -80C as supplied. 1 month when stored at 4C after reconstituting as directed. 3 months when stored at -20C to -80C after reconstituting as directed.
<b>Gene Symbol</b>	RETNLG
<b>Species</b>	Mouse
<b>Specificity/Sensitivity</b>	RELM gamma is a dimer, 9.4 / 18.9 kDa (89 / 178 aa)
<b>Preparation Method</b>	Protein is derived from genetically modified E. coli.
<b>Endotoxin Note</b>	Acceptance criteria for endotoxin levels are <1 EUs/ug protein (determined by Kinetic LAL Method).

**Product Application Details**

<b>Applications</b>	SDS-Page
<b>Recommended Dilutions</b>	SDS-Page
<b>Application Notes</b>	Lot Specific Information: Given endotoxin and ED50 values are acceptance criteria standards. For lot specific values, please contact technical support.

**Images**

SDS-Page: Recombinant Mouse RELM gamma Protein [NBP2-76306] - 1 ug in each lane (-) non-reducing conditions and (+) reducing conditions in a 4-20% Tris-Glycine gel.





### **Novus Biologicals USA**

10730 E. Briarwood Avenue  
Centennial, CO 80112  
USA  
Phone: 303.730.1950  
Toll Free: 1.888.506.6887  
Fax: 303.730.1966  
nb-customerservice@bio-techne.com

### **Bio-Techne Canada**

21 Canmotor Ave  
Toronto, ON M8Z 4E6  
Canada  
Phone: 905.827.6400  
Toll Free: 855.668.8722  
Fax: 905.827.6402  
canada.inquires@bio-techne.com

### **Bio-Techne Ltd**

19 Barton Lane  
Abingdon Science Park  
Abingdon, OX14 3NB, United Kingdom  
Phone: (44) (0) 1235 529449  
Free Phone: 0800 37 34 15  
Fax: (44) (0) 1235 533420  
info.EMEA@bio-techne.com

### **General Contact Information**

www.novusbio.com  
Technical Support: nb-technical@bio-  
techne.com  
Orders: nb-customerservice@bio-techne.com  
General: novus@novusbio.com

### **Limitations**

This product is for research use only and is not approved for use in humans or in clinical diagnosis. This product is guaranteed for 1 year from date of receipt.

For more information on our 100% guarantee, please visit [www.novusbio.com/guarantee](http://www.novusbio.com/guarantee)

Earn gift cards/discounts by submitting a review: [www.novusbio.com/reviews/submit/NBP2-76306](http://www.novusbio.com/reviews/submit/NBP2-76306)

Earn gift cards/discounts by submitting a publication using this product:  
[www.novusbio.com/publications](http://www.novusbio.com/publications)

