

Product Datasheet

Recombinant Human CXCL1/GRO alpha/KC/CINC-1 Protein NBP2-76248-5ug

Unit Size: 5 ug

Store at -20 to -70C as supplied. After reconstitution, store at 2 to 8C for 1 month and at -20 to -70C for long term storage. Avoid repeated freeze-thaw cycles.

www.novusbio.com



technical@novusbio.com

Protocols, Publications, Related Products, Reviews, Research Tools and Images at:
www.novusbio.com/NBP2-76248

Updated 10/3/2023 v.20.1

Earn rewards for product
reviews and publications.

Submit a publication at www.novusbio.com/publications

Submit a review at www.novusbio.com/reviews/destination/NBP2-76248



NBP2-76248-5ug

Recombinant Human CXCL1/GRO alpha/KC/CINC-1 Protein

Product Information	
Unit Size	5 ug
Concentration	Lyoph
Storage	Store at -20 to -70C as supplied. After reconstitution, store at 2 to 8C for 1 month and at -20 to -70C for long term storage. Avoid repeated freeze-thaw cycles.
Preservative	No Preservative
Reconstitution Instructions	Sterile water at 0.1 mg/mL
Purity	>95%, by SDS-PAGE
Buffer	Lyophilized from a sterile (0.2 micron) filtered aqueous solution containing 0.1% Trifluoroacetic Acid (TFA)
Target Molecular Weight	7.9 kDa

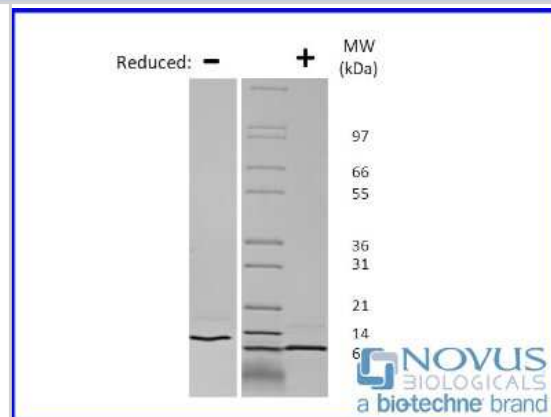
Product Description	
Description	For prolonged storage, dilute to working aliquots in a 0.1% BSA solution, store at -80C and avoid repeat freeze thaws. Expiration Date: 12 months from date of receipt when stored at -20C to -80C as supplied. 1 month when stored at 4C after reconstituting as directed. 3 months when stored at -20C to -80C after reconstituting as directed.
Gene ID	2919
Gene Symbol	CXCL1
Species	Human
Specificity/Sensitivity	CXCL1 is a monomer, 7.9 kDa (73 aa)
Preparation Method	Protein is derived from genetically modified E. coli.
Details of Functionality	Bioactive protein but no acceptance criteria limits established
Endotoxin Note	Acceptance criteria for endotoxin levels are <1 EUs/ug protein (determined by Kinetic LAL Method).

Product Application Details	
Applications	SDS-Page, Bioactivity
Recommended Dilutions	SDS-Page, Bioactivity
Application Notes	Lot Specific Information: Given endotoxin and ED50 values are acceptance criteria standards. For lot specific values, please contact technical support.

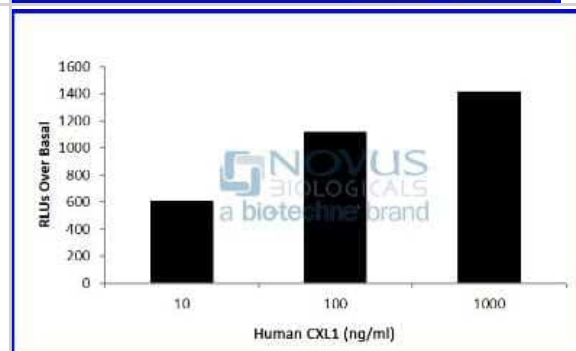


Images

SDS-Page: Recombinant Human CXCL1 Protein [NBP2-76248] - 1 ug in each lane (-) non-reducing conditions and (+) reducing conditions in a 4-20% Tris-Glycine gel.



Bioactivity: Recombinant Human CXCL1 Protein [NBP2-76248] - CXCL1 induced chemotaxis of human neutrophils.





Novus Biologicals USA

10730 E. Briarwood Avenue
Centennial, CO 80112
USA
Phone: 303.730.1950
Toll Free: 1.888.506.6887
Fax: 303.730.1966
nb-customerservice@bio-techne.com

Bio-Techne Canada

21 Canmotor Ave
Toronto, ON M8Z 4E6
Canada
Phone: 905.827.6400
Toll Free: 855.668.8722
Fax: 905.827.6402
canada.inquires@bio-techne.com

Bio-Techne Ltd

19 Barton Lane
Abingdon Science Park
Abingdon, OX14 3NB, United Kingdom
Phone: (44) (0) 1235 529449
Free Phone: 0800 37 34 15
Fax: (44) (0) 1235 533420
info.EMEA@bio-techne.com

General Contact Information

www.novusbio.com
Technical Support: nb-technical@bio-techne.com
Orders: nb-customerservice@bio-techne.com
General: novus@novusbio.com

Limitations

This product is for research use only and is not approved for use in humans or in clinical diagnosis. This product is guaranteed for 1 year from date of receipt.

For more information on our 100% guarantee, please visit www.novusbio.com/guarantee

Earn gift cards/discounts by submitting a review: www.novusbio.com/reviews/submit/NBP2-76248

Earn gift cards/discounts by submitting a publication using this product:
www.novusbio.com/publications

