

Product Datasheet

Rat Collagen I alpha 1 ELISA Kit (Colorimetric) NBP2-75840

Unit Size: 1 Kit

Storage of components varies. See protocol for specific instructions.

www.novusbio.com



technical@novusbio.com

Protocols, Publications, Related Products, Reviews, Research Tools and Images at:
www.novusbio.com/NBP2-75840

Updated 7/18/2023 v.20.1

Earn rewards for product
reviews and publications.

Submit a publication at www.novusbio.com/publications

Submit a review at www.novusbio.com/reviews/destination/NBP2-75840



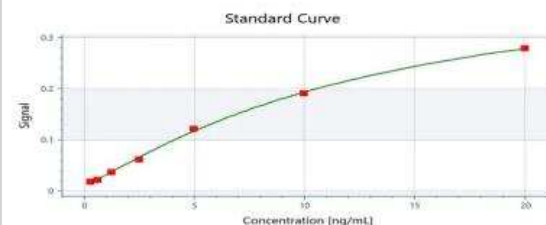
NBP2-75840**Rat Collagen I alpha 1 ELISA Kit (Colorimetric)**

Product Information	
Unit Size	1 Kit
Concentration	Concentration is not relevant for this product. Please see the protocols for proper use of this product.
Storage	Storage of components varies. See protocol for specific instructions.
Product Description	
Gene ID	1277
Gene Symbol	COL1A1
Species	Rat
Specificity/Sensitivity	This kit recognizes Rat COL1a1 in samples. No significant cross-reactivity or interference between Rat COL1a1 and analogues was observed.
Kit Components	Micro ELISA Plate (Dismountable), Reference Standard, Concentrated Biotinylated Detection Ab (100x), Concentrated HRP Conjugate (100x), Sample Diluent, Biotinylated Detection Ab Diluent, HRP Conjugate Diluent, Concentrated Wash Buffer (25x), Substrate Reagent, Stop Solution, Plate Sealer, Product Manual
Standard Curve Range	0.31 - 20 ng/mL
Sensitivity	0.19 ng/mL
Inter Assay	CV% < 4.49%
Intra Assay	CV% < 4.85%
Assay Type	Sandwich-ELISA
Spiking Recovery	85-105%
Suitable Sample Type	Serum, plasma and other biological fluids
Sample Volume	100 uL
Product Application Details	
Applications	ELISA
Recommended Dilutions	ELISA

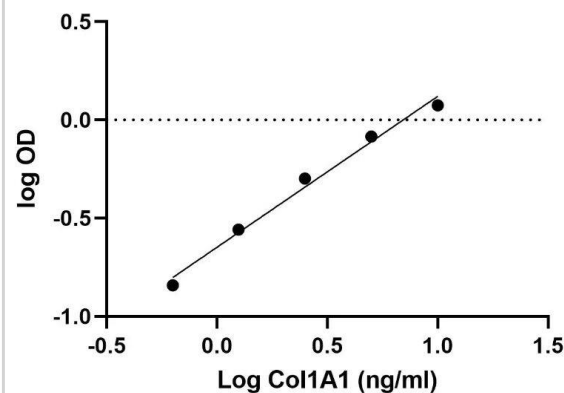


Images

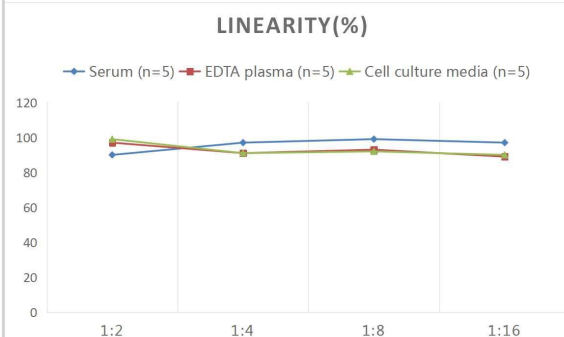
ELISA: Rat Collagen I alpha 1 ELISA Kit (Colorimetric) [NBP2-75840] - Dose response curve. Image from verified customer review.



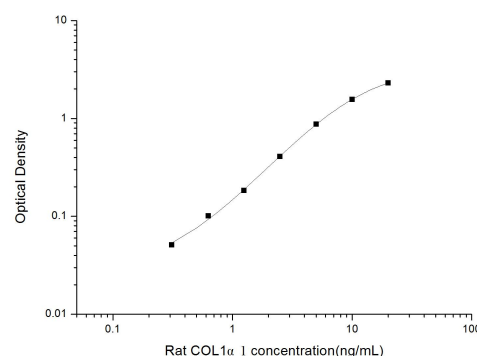
ELISA: Rat Collagen I alpha 1 ELISA Kit (Colorimetric) [NBP2-75840] - Standard curve. Image from verified customer review.



ELISA: Rat Collagen I alpha 1 ELISA Kit (Colorimetric) [NBP2-75840] - Samples were spiked with high concentrations of Rat Collagen I alpha 1 and diluted with Reference Standard & Sample Diluent to produce samples with values within the range of the assay.



ELISA: Rat Collagen I alpha 1 ELISA Kit (Colorimetric) [NBP2-75840] - Standard Curve Reference





Novus Biologicals USA

10730 E. Briarwood Avenue
Centennial, CO 80112
USA
Phone: 303.730.1950
Toll Free: 1.888.506.6887
Fax: 303.730.1966
nb-customerservice@bio-techne.com

Bio-Techne Canada

21 Canmotor Ave
Toronto, ON M8Z 4E6
Canada
Phone: 905.827.6400
Toll Free: 855.668.8722
Fax: 905.827.6402
canada.inquires@bio-techne.com

Bio-Techne Ltd

19 Barton Lane
Abingdon Science Park
Abingdon, OX14 3NB, United Kingdom
Phone: (44) (0) 1235 529449
Free Phone: 0800 37 34 15
Fax: (44) (0) 1235 533420
info.EMEA@bio-techne.com

General Contact Information

www.novusbio.com
Technical Support: nb-technical@bio-techne.com
Orders: nb-customerservice@bio-techne.com
General: novus@novusbio.com

Products Related to NBP2-75840

NBP1-77458PEP	Collagen I alpha 1 Antibody Blocking Peptide
7754-BH-005/CF	TGF-beta 1 [Unconjugated]
NBP1-30054	Collagen I alpha 1 Antibody
7270-IL-025/CF	IL-6 [Unconjugated]

Limitations

This product is for research use only and is not approved for use in humans or in clinical diagnosis. ELISA Kits are guaranteed for 6 months from date of receipt.

For more information on our 100% guarantee, please visit www.novusbio.com/guarantee

Earn gift cards/discounts by submitting a review: www.novusbio.com/reviews/submit/NBP2-75840

Earn gift cards/discounts by submitting a publication using this product:
www.novusbio.com/publications

