

Product Datasheet

SETD8 Antibody (JM73-43)

NBP2-75662

Unit Size: 100 ul

Store at 4C short term. Aliquot and store at -20C long term. Avoid freeze-thaw cycles.

www.novusbio.com



technical@novusbio.com

Protocols, Publications, Related Products, Reviews, Research Tools and Images at:
www.novusbio.com/NBP2-75662

Updated 1/3/2023 v.20.1

Earn rewards for product
reviews and publications.

Submit a publication at www.novusbio.com/publications

Submit a review at www.novusbio.com/reviews/destination/NBP2-75662



NBP2-75662**SETD8 Antibody (JM73-43)****Product Information**

| | |
|----------------------|--|
| Unit Size | 100 ul |
| Concentration | 1 mg/ml |
| Storage | Store at 4C short term. Aliquot and store at -20C long term. Avoid freeze-thaw cycles. |
| Clonality | Monoclonal |
| Clone | JM73-43 |
| Preservative | 0.05% Sodium Azide |
| Isotype | IgG |
| Purity | Protein A purified |
| Buffer | TBS (pH7.4), 0.05% BSA, 40% Glycerol |

Product Description

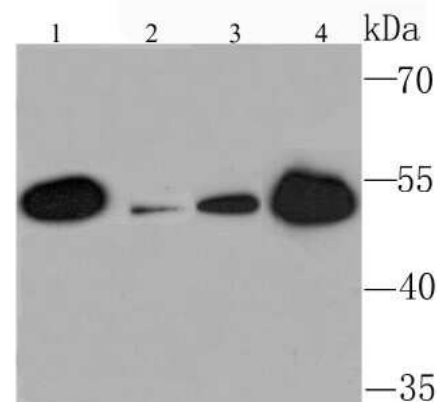
| | |
|--------------------|--|
| Host | Rabbit |
| Gene Symbol | KMT5A |
| Species | Human, Mouse |
| Immunogen | Synthetic peptide within Human SETD8 aa 51-100 / 393. (SwissProt: Q9NQR1 Human; SwissProt: Q2YDW7 Mouse) |

Product Application Details

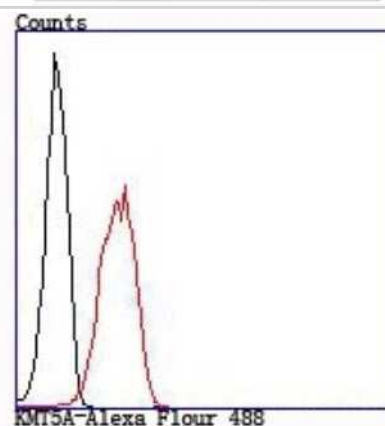
| | |
|------------------------------|--|
| Applications | Western Blot, Flow Cytometry |
| Recommended Dilutions | Western Blot 1:500-1:2000, Flow Cytometry 1:50-1:100 |

Images

Western Blot: SETD8 Antibody (JM73-43) [NBP2-75662] - Analysis of KMT5A on different lysates using anti-KMT5A antibody at 1/1,000 dilution. Positive control: Lane 1: Mouse kidney Lane 2: Mouse liver Lane 3: 293T Lane 4: 293



Flow Cytometry: SETD8 Antibody (JM73-43) [NBP2-75662] - Analysis of 293T cells with KMT5A antibody at 1/100 dilution (red) compared with an unlabelled control (cells without incubation with primary antibody; black).





Novus Biologicals USA

10730 E. Briarwood Avenue
Centennial, CO 80112
USA

Phone: 303.730.1950

Toll Free: 1.888.506.6887

Fax: 303.730.1966

nb-customerservice@bio-techne.com

Bio-Techne Canada

21 Canmotor Ave
Toronto, ON M8Z 4E6
Canada

Phone: 905.827.6400

Toll Free: 855.668.8722

Fax: 905.827.6402

canada.inquires@bio-techne.com

Bio-Techne Ltd

19 Barton Lane
Abingdon Science Park
Abingdon, OX14 3NB, United Kingdom

Phone: (44) (0) 1235 529449

Free Phone: 0800 37 34 15

Fax: (44) (0) 1235 533420

info.EMEA@bio-techne.com

General Contact Information

www.novusbio.com

Technical Support: nb-technical@bio-techne.com

Orders: nb-customerservice@bio-techne.com

General: novus@novusbio.com

Limitations

This product is for research use only and is not approved for use in humans or in clinical diagnosis. Primary Antibodies are guaranteed for 1 year from date of receipt.

For more information on our 100% guarantee, please visit www.novusbio.com/guarantee

Earn gift cards/discounts by submitting a review: www.novusbio.com/reviews/submit/NBP2-75662

Earn gift cards/discounts by submitting a publication using this product:

www.novusbio.com/publications

