

# Product Datasheet

## SDHB Antibody (JU02-33) NBP2-75658

Unit Size: 100 ul

Store at 4C short term. Aliquot and store at -20C long term. Avoid freeze-thaw cycles.

[www.novusbio.com](http://www.novusbio.com)



[technical@novusbio.com](mailto:technical@novusbio.com)

Protocols, Publications, Related Products, Reviews, Research Tools and Images at:  
[www.novusbio.com/NBP2-75658](http://www.novusbio.com/NBP2-75658)

Updated 1/3/2023 v.20.1

Earn rewards for product  
reviews and publications.

Submit a publication at [www.novusbio.com/publications](http://www.novusbio.com/publications)

Submit a review at [www.novusbio.com/reviews/destination/NBP2-75658](http://www.novusbio.com/reviews/destination/NBP2-75658)



**NBP2-75658**

SDHB Antibody (JU02-33)

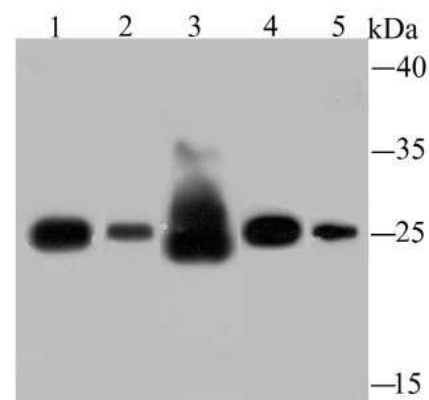
Product Information	
Unit Size	100 ul
Concentration	1 mg/ml
Storage	Store at 4C short term. Aliquot and store at -20C long term. Avoid freeze-thaw cycles.
Clonality	Monoclonal
Clone	JU02-33
Preservative	0.05% Sodium Azide
Isotype	IgG
Purity	Protein A purified
Buffer	TBS (pH7.4), 0.05% BSA, 40% Glycerol
Target Molecular Weight	32 kDa

Product Description	
Host	Rabbit
Gene Symbol	SDHB
Species	Human, Mouse, Rat
Immunogen	Synthetic peptide within Human SDHB aa 201-250 / 280. (SwissProt: P21912 Human; SwissProt: Q9CQA3 Mouse; SwissProt: P21913 Rat)

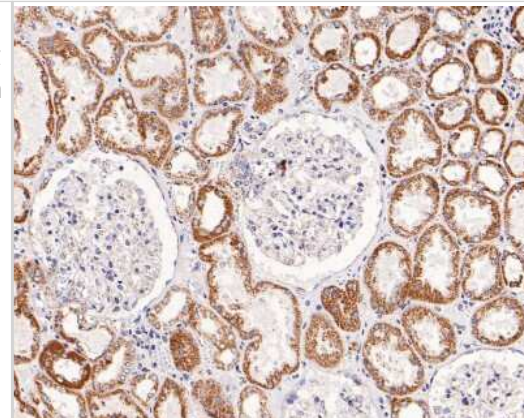
Product Application Details	
Applications	Western Blot, Flow Cytometry, Immunohistochemistry-Paraffin, Immunoprecipitation
Recommended Dilutions	Western Blot 1:500-1:2000, Flow Cytometry 1:50-1:100, Immunoprecipitation 1:10-1:50, Immunohistochemistry-Paraffin 1:50-1:200

**Images**

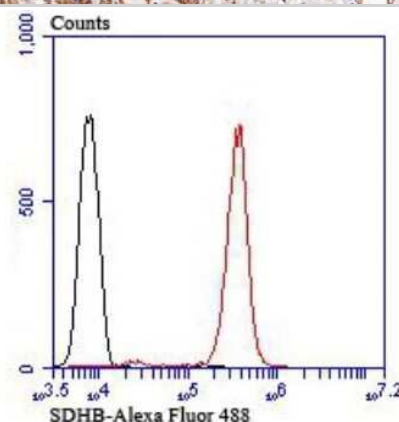
Western Blot: SDHB Antibody (JU02-33) [NBP2-75658] - Analysis of SDHB on different lysates using anti-SDHB antibody at 1/500 dilution. Positive control: Lane 1: Human liver Lane 2: Rat spleen Lane 3: Rat liver Lane 4: Mouse spleen Lane 5: HepG2



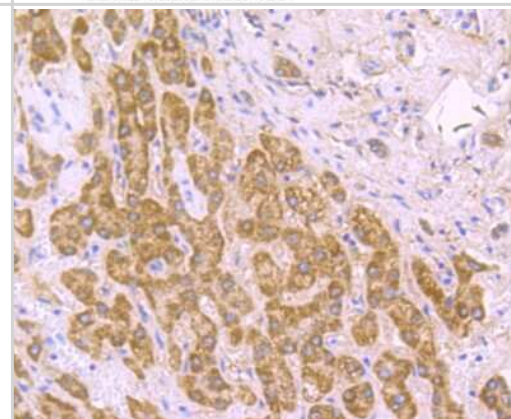
**Immunohistochemistry-Paraffin: SDHB Antibody (JU02-33) [NBP2-75658]** - Analysis of paraffin-embedded human kidney tissue with Rabbit anti-SDHB antibody washed with ddH<sub>2</sub>O and PBS, and then probed with the primary antibody at 1/50 dilution for 0.5 hour at room temperature. The detection was performed using an HRP conjugated compact polymer system. DAB was used as the chromogen. Tissues were counterstained with hematoxylin and mounted with DPX.



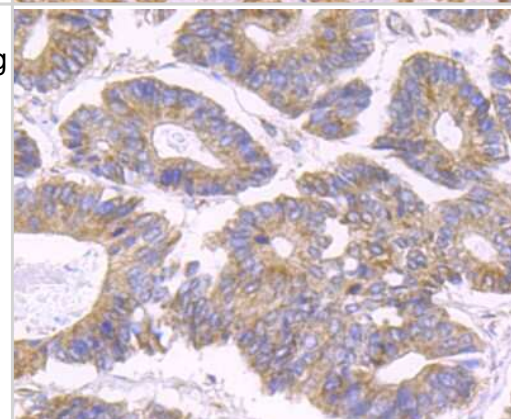
**Flow Cytometry: SDHB Antibody (JU02-33) [NBP2-75658]** - Analysis of Jurkat cells with SDHB antibody at 1/100 dilution (red) compared with an unlabelled control (cells without incubation with primary antibody; black). Alexa Fluor® 488-conjugated goat anti-rabbit IgG was used as the secondary antibody.



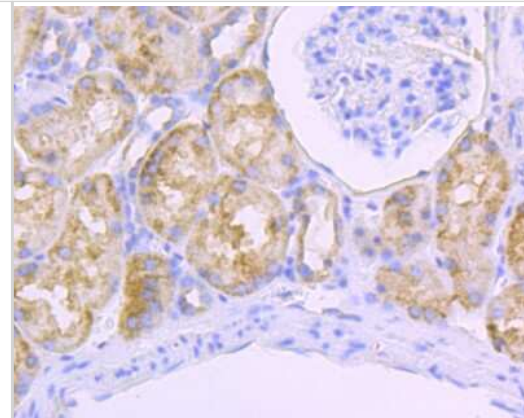
**Immunohistochemistry-Paraffin: SDHB Antibody (JU02-33) [NBP2-75658]** - Analysis of paraffin-embedded human liver tissue using anti-SDHB antibody. Counter stained with hematoxylin.



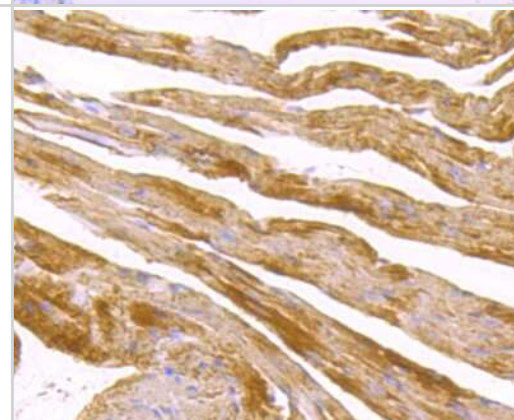
**Immunohistochemistry-Paraffin: SDHB Antibody (JU02-33) [NBP2-75658]** - Analysis of paraffin-embedded human colon cancer tissue using anti-SDHB antibody. Counter stained with hematoxylin.



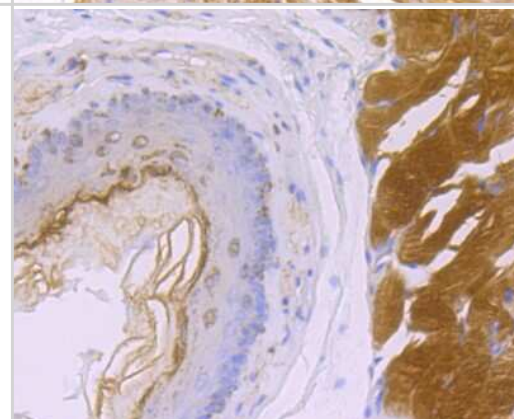
Immunohistochemistry-Paraffin: SDHB Antibody (JU02-33) [NBP2-75658] - Analysis of paraffin-embedded human kidney tissue using anti-SDHB antibody. Counter stained with hematoxylin.



Immunohistochemistry-Paraffin: SDHB Antibody (JU02-33) [NBP2-75658] - Analysis of paraffin-embedded mouse heart tissue using anti-SDHB antibody. Counter stained with hematoxylin.



Immunohistochemistry-Paraffin: SDHB Antibody (JU02-33) [NBP2-75658] - Analysis of paraffin-embedded rat esophagus tissue using anti-SDHB antibody. Counter stained with hematoxylin.





### **Novus Biologicals USA**

10730 E. Briarwood Avenue  
Centennial, CO 80112  
USA  
Phone: 303.730.1950  
Toll Free: 1.888.506.6887  
Fax: 303.730.1966  
nb-customerservice@bio-techne.com

### **Bio-Techne Canada**

21 Canmotor Ave  
Toronto, ON M8Z 4E6  
Canada  
Phone: 905.827.6400  
Toll Free: 855.668.8722  
Fax: 905.827.6402  
canada.inquires@bio-techne.com

### **Bio-Techne Ltd**

19 Barton Lane  
Abingdon Science Park  
Abingdon, OX14 3NB, United Kingdom  
Phone: (44) (0) 1235 529449  
Free Phone: 0800 37 34 15  
Fax: (44) (0) 1235 533420  
info.EMEA@bio-techne.com

### **General Contact Information**

[www.novusbio.com](http://www.novusbio.com)  
Technical Support: [nb-technical@bio-techne.com](mailto:nb-technical@bio-techne.com)  
Orders: [nb-customerservice@bio-techne.com](mailto:nb-customerservice@bio-techne.com)  
General: [novus@novusbio.com](mailto:novus@novusbio.com)

### **Limitations**

This product is for research use only and is not approved for use in humans or in clinical diagnosis. Primary Antibodies are guaranteed for 1 year from date of receipt.

For more information on our 100% guarantee, please visit [www.novusbio.com/guarantee](http://www.novusbio.com/guarantee)

Earn gift cards/discounts by submitting a review: [www.novusbio.com/reviews/submit/NBP2-75658](http://www.novusbio.com/reviews/submit/NBP2-75658)

Earn gift cards/discounts by submitting a publication using this product:  
[www.novusbio.com/publications](http://www.novusbio.com/publications)

