

Product Datasheet

PU.1/Spi-1 Antibody (JB72-35) NBP2-75637

Unit Size: 100 ul

Store at 4C short term. Aliquot and store at -20C long term. Avoid freeze-thaw cycles.

www.novusbio.com



technical@novusbio.com

Protocols, Publications, Related Products, Reviews, Research Tools and Images at:
www.novusbio.com/NBP2-75637

Updated 1/3/2023 v.20.1

Earn rewards for product
reviews and publications.

Submit a publication at www.novusbio.com/publications

Submit a review at www.novusbio.com/reviews/destination/NBP2-75637



NBP2-75637

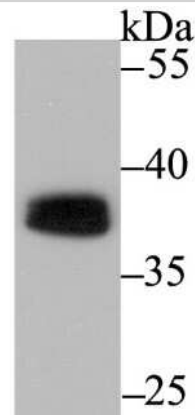
PU.1/Spi-1 Antibody (JB72-35)

Product Information	
Unit Size	100 ul
Concentration	1 mg/ml
Storage	Store at 4C short term. Aliquot and store at -20C long term. Avoid freeze-thaw cycles.
Clonality	Monoclonal
Clone	JB72-35
Preservative	0.05% Sodium Azide
Isotype	IgG
Purity	Protein A purified
Buffer	TBS (pH7.4), 0.05% BSA, 40% Glycerol
Target Molecular Weight	31 kDa
Product Description	
Host	Rabbit
Gene Symbol	SP11
Species	Human
Immunogen	Synthetic peptide within Human PU.1/Spi-1 aa 1-50 / 270. (SwissProt: P17947 Human)
Product Application Details	
Applications	Western Blot, Flow Cytometry, Immunohistochemistry, Immunohistochemistry-Paraffin
Recommended Dilutions	Western Blot 1:500-1:1000, Flow Cytometry 1:50-1:100, Immunohistochemistry, Immunohistochemistry-Paraffin 1:50-1:200

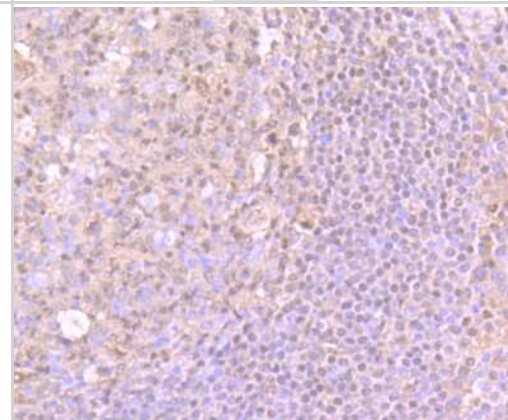


Images

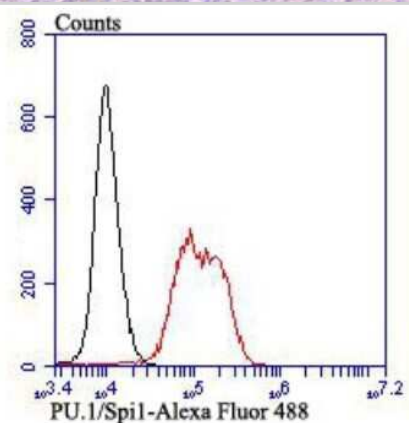
Western Blot: PU.1/Spi-1 Antibody (JB72-35) [NBP2-75637] - Analysis of PU.1/Spi1 on THP-1 cell using anti-PU.1/Spi1 antibody at 1/500 dilution.



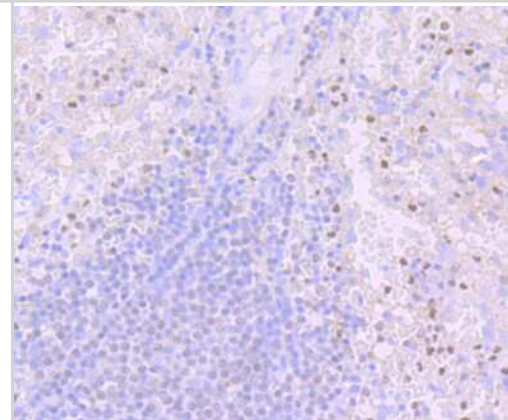
Immunohistochemistry-Paraffin: PU.1/Spi-1 Antibody (JB72-35) [NBP2-75637] - Analysis of paraffin-embedded human tonsil tissue using anti-PU.1/Spi1 antibody. Counter stained with hematoxylin.



Flow Cytometry: PU.1/Spi-1 Antibody (JB72-35) [NBP2-75637] - Analysis of K562 cells with PU.1/Spi1 antibody at 1/100 dilution (red) compared with an unlabelled control (cells without incubation with primary antibody; black). Alexa Fluor 488-conjugated goat anti rabbit IgG was used as the secondary antibody.



Immunohistochemistry-Paraffin: PU.1/Spi-1 Antibody (JB72-35) [NBP2-75637] - Analysis of paraffin-embedded human spleen tissue using anti-PU.1/Spi1 antibody. Counter stained with hematoxylin.





Novus Biologicals USA

10730 E. Briarwood Avenue
Centennial, CO 80112
USA

Phone: 303.730.1950

Toll Free: 1.888.506.6887

Fax: 303.730.1966

nb-customerservice@bio-techne.com

Bio-Techne Canada

21 Canmotor Ave
Toronto, ON M8Z 4E6
Canada

Phone: 905.827.6400

Toll Free: 855.668.8722

Fax: 905.827.6402

canada.inquires@bio-techne.com

Bio-Techne Ltd

19 Barton Lane
Abingdon Science Park
Abingdon, OX14 3NB, United Kingdom

Phone: (44) (0) 1235 529449

Free Phone: 0800 37 34 15

Fax: (44) (0) 1235 533420

info.EMEA@bio-techne.com

General Contact Information

www.novusbio.com

Technical Support: nb-technical@bio-techne.com

Orders: nb-customerservice@bio-techne.com

General: novus@novusbio.com

Limitations

This product is for research use only and is not approved for use in humans or in clinical diagnosis. Primary Antibodies are guaranteed for 1 year from date of receipt.

For more information on our 100% guarantee, please visit www.novusbio.com/guarantee

Earn gift cards/discounts by submitting a review: www.novusbio.com/reviews/submit/NBP2-75637

Earn gift cards/discounts by submitting a publication using this product:
www.novusbio.com/publications

