

# Product Datasheet

## PA28 Activator alpha Subunit/PSME1 Antibody (JU60-33) NBP2-75606

Unit Size: 100 ul

Store at 4C short term. Aliquot and store at -20C long term. Avoid freeze-thaw cycles.

[www.novusbio.com](http://www.novusbio.com)



[technical@novusbio.com](mailto:technical@novusbio.com)

Protocols, Publications, Related Products, Reviews, Research Tools and Images at:  
[www.novusbio.com/NBP2-75606](http://www.novusbio.com/NBP2-75606)

Updated 1/3/2023 v.20.1

Earn rewards for product  
reviews and publications.

Submit a publication at [www.novusbio.com/publications](http://www.novusbio.com/publications)

Submit a review at [www.novusbio.com/reviews/destination/NBP2-75606](http://www.novusbio.com/reviews/destination/NBP2-75606)



**NBP2-75606**

PA28 Activator alpha Subunit/PSME1 Antibody (JU60-33)

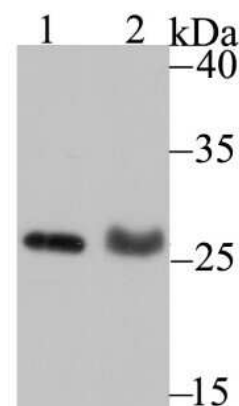
Product Information	
Unit Size	100 ul
Concentration	1 mg/ml
Storage	Store at 4C short term. Aliquot and store at -20C long term. Avoid freeze-thaw cycles.
Clonality	Monoclonal
Clone	JU60-33
Preservative	0.05% Sodium Azide
Isotype	IgG
Purity	Protein A purified
Buffer	TBS (pH7.4), 0.05% BSA, 40% Glycerol
Target Molecular Weight	27 kDa

Product Description	
Host	Rabbit
Gene Symbol	PSME1
Species	Human, Mouse, Rat
Immunogen	Recombinant protein within Human PA28 Activator alpha Subunit/PSME1 aa 1-155 / 249. (SwissProt: Q06323 Human; SwissProt: P97371 Mouse; SwissProt: Q63797 Rat)

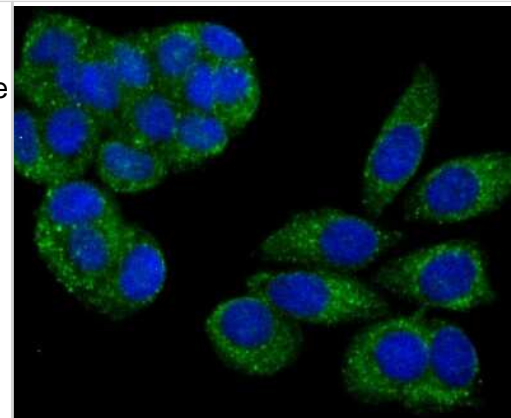
Product Application Details	
Applications	Western Blot, Immunocytochemistry/ Immunofluorescence, Immunohistochemistry, Immunohistochemistry-Paraffin, Immunoprecipitation
Recommended Dilutions	Western Blot 1:500-1:1000, Immunohistochemistry, Immunocytochemistry/ Immunofluorescence 1:50-1:100, Immunoprecipitation 1:10-1:50, Immunohistochemistry-Paraffin 1:50-1:200

**Images**

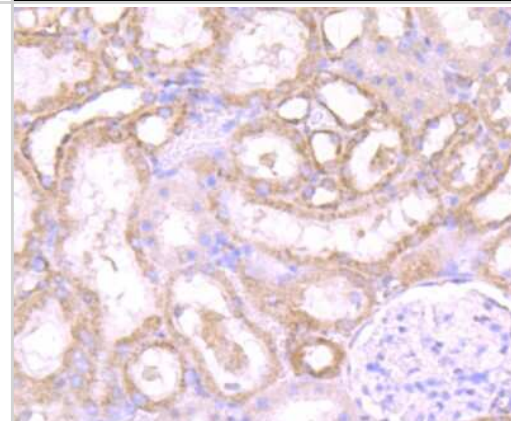
Western Blot: PA28 Activator alpha Subunit/PSME1 Antibody (JU60-33) [NBP2-75606] - Analysis of PSME1 on MCF-7 cell (1) and rat lung tissue (2) lysate using anti-PSME1 antibody at 1/500 dilution.



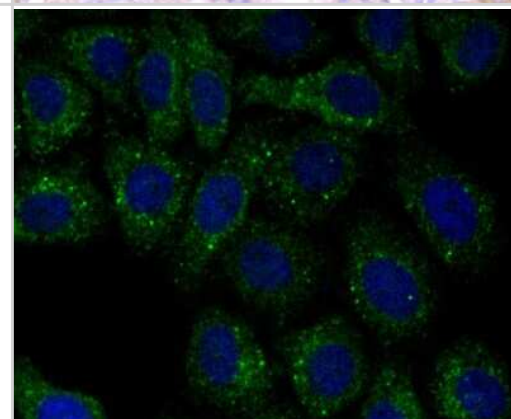
Immunocytochemistry/Immunofluorescence: PA28 Activator alpha Subunit/PSME1 Antibody (JU60-33) [NBP2-75606] - Staining PSME1 in MCF-7 cells (green). The nuclear counter stain is DAPI (blue). Cells were fixed in paraformaldehyde, permeabilised with 0.25% Triton X100/PBS.



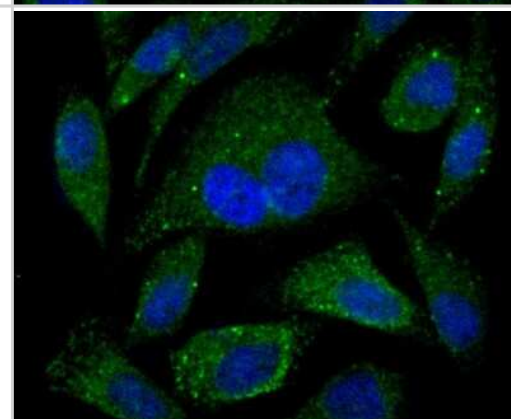
Immunohistochemistry-Paraffin: PA28 Activator alpha Subunit/PSME1 Antibody (JU60-33) [NBP2-75606] - Analysis of paraffin-embedded rat kidney tissue using anti-PSME1 antibody. Counter stained with hematoxylin.



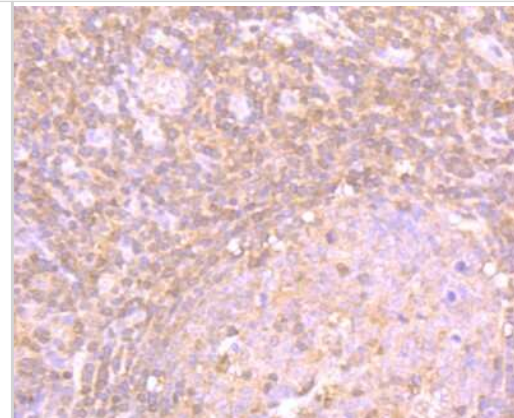
Immunocytochemistry/Immunofluorescence: PA28 Activator alpha Subunit/PSME1 Antibody (JU60-33) [NBP2-75606] - Staining PSME1 in HepG2 cells (green). The nuclear counter stain is DAPI (blue). Cells were fixed in paraformaldehyde, permeabilised with 0.25% Triton X100/PBS.



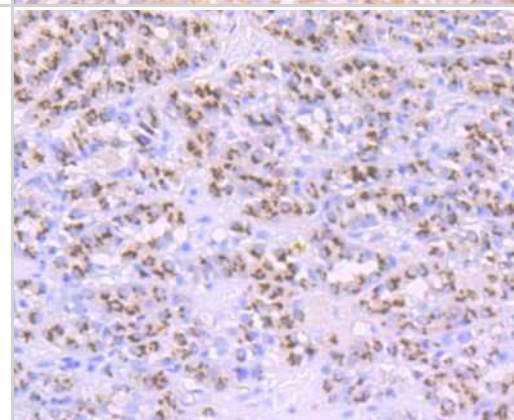
Immunocytochemistry/Immunofluorescence: PA28 Activator alpha Subunit/PSME1 Antibody (JU60-33) [NBP2-75606] - Staining PSME1 in PC-3M cells (green). The nuclear counter stain is DAPI (blue). Cells were fixed in paraformaldehyde, permeabilised with 0.25% Triton X100/PBS.



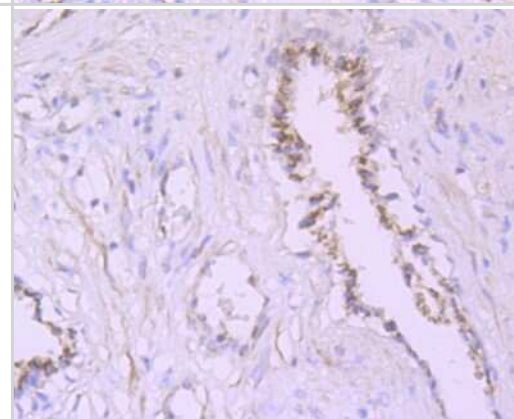
Immunohistochemistry-Paraffin: PA28 Activator alpha Subunit/PSME1 Antibody (JU60-33) [NBP2-75606] - Analysis of paraffin-embedded human tonsil tissue using anti-PSME1 antibody. Counter stained with hematoxylin.



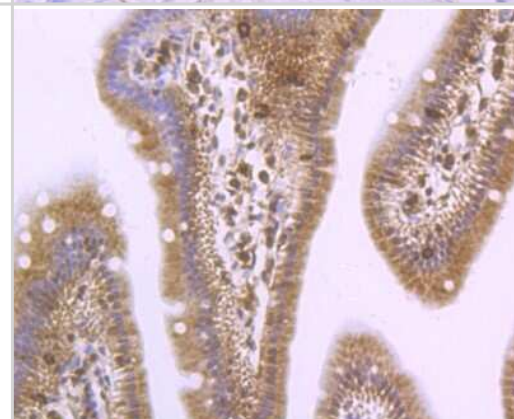
Immunohistochemistry-Paraffin: PA28 Activator alpha Subunit/PSME1 Antibody (JU60-33) [NBP2-75606] - Analysis of paraffin-embedded human liver cancer tissue using anti-PSME1 antibody. Counter stained with hematoxylin.



Immunohistochemistry-Paraffin: PA28 Activator alpha Subunit/PSME1 Antibody (JU60-33) [NBP2-75606] - Analysis of paraffin-embedded human prostate tissue using anti-PSME1 antibody. Counter stained with hematoxylin.



Immunohistochemistry-Paraffin: PA28 Activator alpha Subunit/PSME1 Antibody (JU60-33) [NBP2-75606] - Analysis of paraffin-embedded mouse small intestine tissue using anti-PSME1 antibody. Counter stained with hematoxylin.





### **Novus Biologicals USA**

10730 E. Briarwood Avenue  
Centennial, CO 80112  
USA  
Phone: 303.730.1950  
Toll Free: 1.888.506.6887  
Fax: 303.730.1966  
nb-customerservice@bio-techne.com

### **Bio-Techne Canada**

21 Canmotor Ave  
Toronto, ON M8Z 4E6  
Canada  
Phone: 905.827.6400  
Toll Free: 855.668.8722  
Fax: 905.827.6402  
canada.inquires@bio-techne.com

### **Bio-Techne Ltd**

19 Barton Lane  
Abingdon Science Park  
Abingdon, OX14 3NB, United Kingdom  
Phone: (44) (0) 1235 529449  
Free Phone: 0800 37 34 15  
Fax: (44) (0) 1235 533420  
info.EMEA@bio-techne.com

### **General Contact Information**

[www.novusbio.com](http://www.novusbio.com)  
Technical Support: nb-technical@bio-techne.com  
Orders: nb-customerservice@bio-techne.com  
General: novus@novusbio.com

### **Limitations**

This product is for research use only and is not approved for use in humans or in clinical diagnosis. Primary Antibodies are guaranteed for 1 year from date of receipt.

For more information on our 100% guarantee, please visit [www.novusbio.com/guarantee](http://www.novusbio.com/guarantee)

Earn gift cards/discounts by submitting a review: [www.novusbio.com/reviews/submit/NBP2-75606](http://www.novusbio.com/reviews/submit/NBP2-75606)

Earn gift cards/discounts by submitting a publication using this product:  
[www.novusbio.com/publications](http://www.novusbio.com/publications)

