

# Product Datasheet

## MAD2L2 Antibody (JU99-23)

### NBP2-75562

Unit Size: 100 ul

Store at 4C short term. Aliquot and store at -20C long term. Avoid freeze-thaw cycles.

[www.novusbio.com](http://www.novusbio.com)



[technical@novusbio.com](mailto:technical@novusbio.com)

Protocols, Publications, Related Products, Reviews, Research Tools and Images at:  
[www.novusbio.com/NBP2-75562](http://www.novusbio.com/NBP2-75562)

Updated 1/3/2023 v.20.1

Earn rewards for product  
reviews and publications.

Submit a publication at [www.novusbio.com/publications](http://www.novusbio.com/publications)

Submit a review at [www.novusbio.com/reviews/destination/NBP2-75562](http://www.novusbio.com/reviews/destination/NBP2-75562)



**NBP2-75562**

MAD2L2 Antibody (JU99-23)

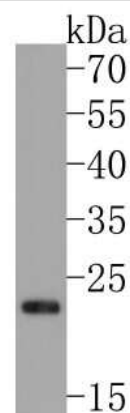
Product Information	
Unit Size	100 ul
Concentration	1 mg/ml
Storage	Store at 4C short term. Aliquot and store at -20C long term. Avoid freeze-thaw cycles.
Clonality	Monoclonal
Clone	JU99-23
Preservative	0.05% Sodium Azide
Isotype	IgG
Purity	Protein A purified
Buffer	TBS (pH7.4), 0.05% BSA, 40% Glycerol
Target Molecular Weight	24 kDa

Product Description	
Host	Rabbit
Gene Symbol	MAD2L2
Species	Human, Mouse, Rat
Immunogen	Synthetic peptide within Human MAD2L2 aa 162-211 / 211. (SwissProt: Q9UI95 Human; SwissProt: Q9D752 Mouse; SwissProt: D3Z8D9 Rat)

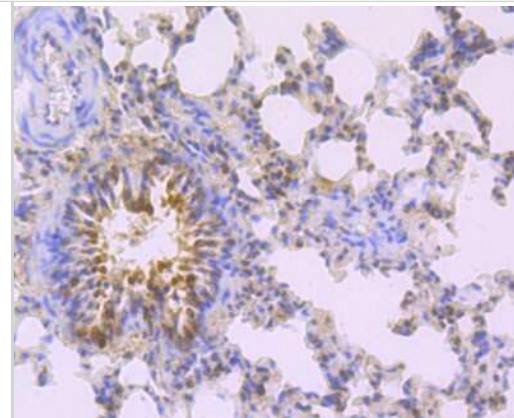
Product Application Details	
Applications	Western Blot, Flow Cytometry, Immunohistochemistry-Paraffin, Immunoprecipitation
Recommended Dilutions	Western Blot 1:500, Flow Cytometry 1:50-1:100, Immunoprecipitation 1:10-1:50, Immunohistochemistry-Paraffin 1:50-1:200

**Images**

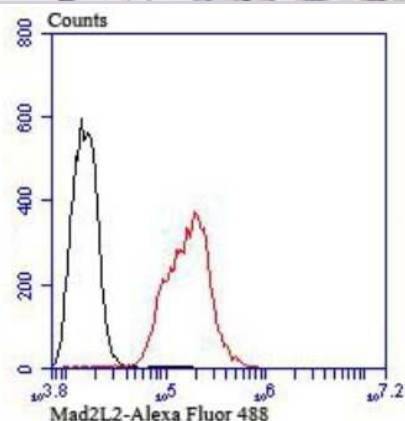
Western Blot: MAD2L2 Antibody (JU99-23) [NBP2-75562] - Analysis of MAD2L2 on K562 cell lysates with Rabbit anti-Mad2L2 antibody at 1/500 dilution. Lysates/proteins at 10 ug/Lane. Predicted band size: 24 kDa Observed band size: 24 kDa Exposure time: 2 minutes; 15% SDS-PAGE gel. Proteins were transferred to a PVDF membrane and blocked with 5% NFDM/TBST for 1 hour at room temperature. The primary antibody at 1/500 dilution was used in 5% NFDM/TBST at room temperature for 2 hours. Goat Anti-Rabbit IgG - HRP Secondary Antibody at 1:200,000 dilution was used for 1 hour at room temperature.



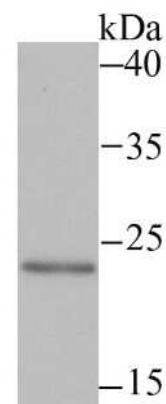
**Immunohistochemistry-Paraffin: MAD2L2 Antibody (JU99-23) [NBP2-75562]** - Analysis of paraffin-embedded rat lung tissue using anti-Mad2L2 antibody. Counter stained with hematoxylin.



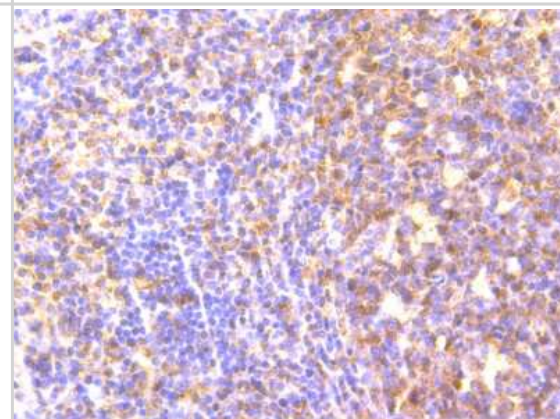
**Flow Cytometry: MAD2L2 Antibody (JU99-23) [NBP2-75562]** - Analysis of Hela cells with Mad2L2 antibody at 1/100 dilution (red) compared with an unlabelled control (cells without incubation with primary antibody; black). Alexa Fluor 488-conjugated goat anti rabbit IgG was used as the secondary antibody.



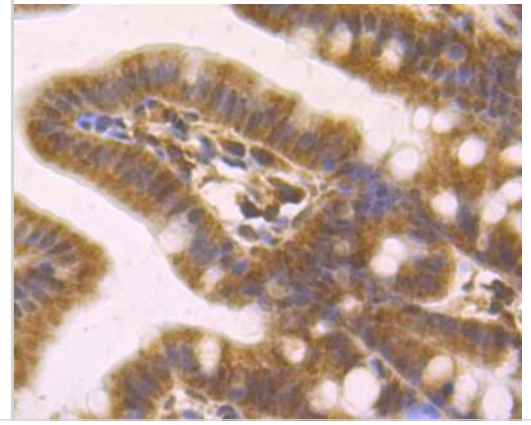
**Western Blot: MAD2L2 Antibody (JU99-23) [NBP2-75562]** - Analysis of Mad2L2 on SiHa cell using anti-Mad2L2 antibody at 1/500 dilution.



**Immunohistochemistry-Paraffin: MAD2L2 Antibody (JU99-23) [NBP2-75562]** - Analysis of paraffin-embedded human tonsil tissue using anti-Mad2L2 antibody. Counter stained with hematoxylin.



Immunohistochemistry-Paraffin: MAD2L2 Antibody (JU99-23) [NBP2-75562] - Analysis of paraffin-embedded mouse colon tissue using anti-Mad2L2 antibody. Counter stained with hematoxylin.





### **Novus Biologicals USA**

10730 E. Briarwood Avenue  
Centennial, CO 80112  
USA  
Phone: 303.730.1950  
Toll Free: 1.888.506.6887  
Fax: 303.730.1966  
nb-customerservice@bio-techne.com

### **Bio-Techne Canada**

21 Canmotor Ave  
Toronto, ON M8Z 4E6  
Canada  
Phone: 905.827.6400  
Toll Free: 855.668.8722  
Fax: 905.827.6402  
canada.inquires@bio-techne.com

### **Bio-Techne Ltd**

19 Barton Lane  
Abingdon Science Park  
Abingdon, OX14 3NB, United Kingdom  
Phone: (44) (0) 1235 529449  
Free Phone: 0800 37 34 15  
Fax: (44) (0) 1235 533420  
info.EMEA@bio-techne.com

### **General Contact Information**

[www.novusbio.com](http://www.novusbio.com)  
Technical Support: nb-technical@bio-techne.com  
Orders: nb-customerservice@bio-techne.com  
General: novus@novusbio.com

### **Limitations**

This product is for research use only and is not approved for use in humans or in clinical diagnosis. Primary Antibodies are guaranteed for 1 year from date of receipt.

For more information on our 100% guarantee, please visit [www.novusbio.com/guarantee](http://www.novusbio.com/guarantee)

Earn gift cards/discounts by submitting a review: [www.novusbio.com/reviews/submit/NBP2-75562](http://www.novusbio.com/reviews/submit/NBP2-75562)

Earn gift cards/discounts by submitting a publication using this product:  
[www.novusbio.com/publications](http://www.novusbio.com/publications)

