

Product Datasheet

KDEL Antibody (JB42-04) NBP2-75549

Unit Size: 100 ul

Store at 4C short term. Aliquot and store at -20C long term. Avoid freeze-thaw cycles.

www.novusbio.com



technical@novusbio.com

Protocols, Publications, Related Products, Reviews, Research Tools and Images at:
www.novusbio.com/NBP2-75549

Updated 1/3/2023 v.20.1

Earn rewards for product
reviews and publications.

Submit a publication at www.novusbio.com/publications

Submit a review at www.novusbio.com/reviews/destination/NBP2-75549



NBP2-75549

KDEL Antibody (JB42-04)

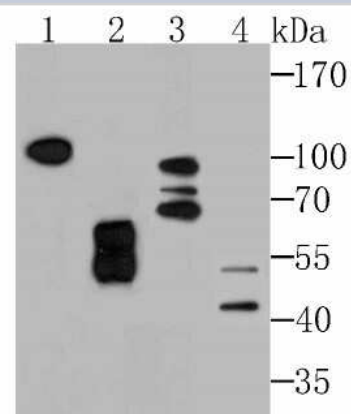
Product Information	
Unit Size	100 ul
Concentration	1 mg/ml
Storage	Store at 4C short term. Aliquot and store at -20C long term. Avoid freeze-thaw cycles.
Clonality	Monoclonal
Clone	JB42-04
Preservative	0.05% Sodium Azide
Isotype	IgG
Purity	Protein A purified
Buffer	TBS (pH7.4), 0.05% BSA, 40% Glycerol
Target Molecular Weight	24 kDa

Product Description	
Host	Rabbit
Gene Symbol	POGLUT2
Species	Human, Mouse, Rat
Immunogen	Synthetic peptide KDEL. (SwissProt: P24390 Human; SwissProt: Q99JH8 Mouse; SwissProt: Q569A6 Rat)

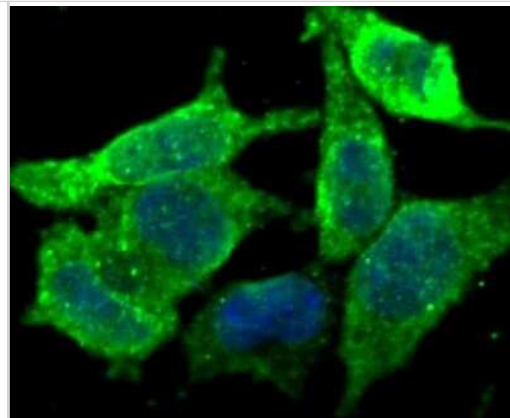
Product Application Details	
Applications	Western Blot, Flow Cytometry, Immunocytochemistry/ Immunofluorescence, Immunohistochemistry, Immunohistochemistry-Paraffin
Recommended Dilutions	Western Blot 1:500-1:2000, Flow Cytometry 1:50-1:100, Immunohistochemistry, Immunocytochemistry/ Immunofluorescence 1:400-1:800, Immunohistochemistry-Paraffin 1:100-1:400

Images

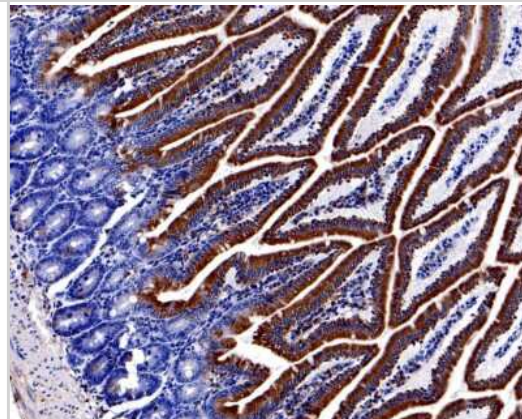
Western Blot: KDEL Antibody (JB42-04) [NBP2-75549] - Analysis of KDEL on different lysates using anti-KDEL antibody at 1/1,000 dilution.
 Positive control: Lane 1: Rat testis tissue Lane 2: Human placenta tissue
 Lane 3: Mouse testis tissue Lane 4: 293



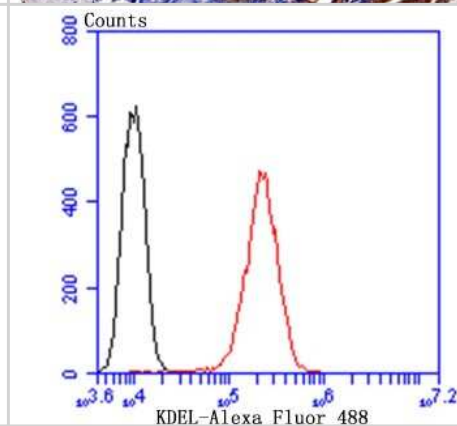
Immunocytochemistry/Immunofluorescence: KDEL Antibody (JB42-04) [NBP2-75549] - Staining KDEL in 293T cells (green). The nuclear counter stain is DAPI (blue). Cells were fixed in paraformaldehyde, permeabilised with 0.25% Triton X100/PBS.



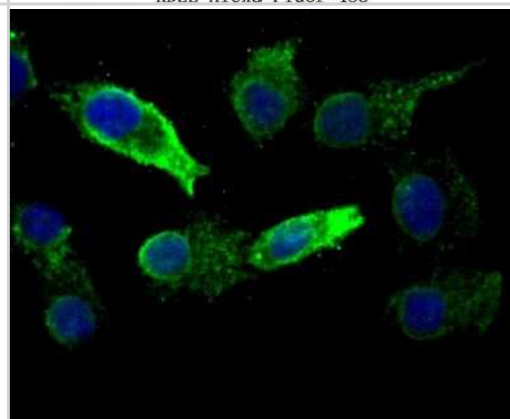
Immunohistochemistry-Paraffin: KDEL Antibody (JB42-04) [NBP2-75549] - Analysis of paraffin-embedded human small intestine tissue using anti-KDEL antibody. The section was pre-treated using heat mediated antigen retrieval with Tris-EDTA buffer (pH 9.0) for 20 minutes. The tissues were blocked in 1% BSA for 30 minutes at room temperature, washed with ddH₂O and PBS, and then probed with the primary antibody (1/400) for 30 minutes at room temperature. The detection was performed using an HRP conjugated compact polymer system. DAB was used as the chromogen. Tissues were counterstained with hematoxylin and mounted with DPX.



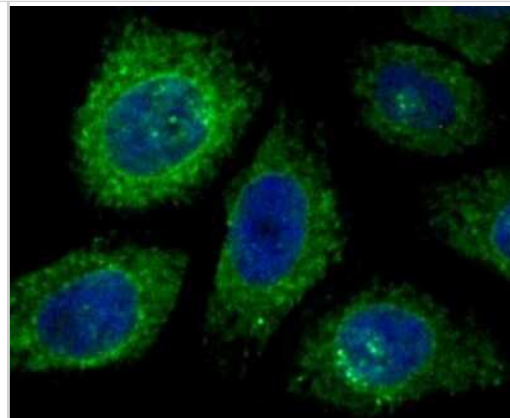
Flow Cytometry: KDEL Antibody (JB42-04) [NBP2-75549] - Analysis of HepG2 cells with KDEL antibody at 1/100 dilution (red) compared with an unlabelled control (cells without incubation with primary antibody; black). Alexa Fluor 488-conjugated goat anti rabbit IgG was used as the secondary antibody.



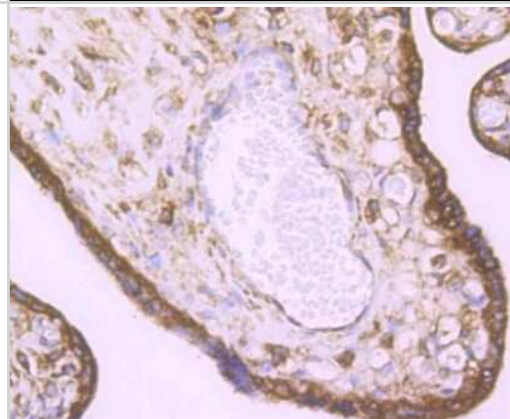
Immunocytochemistry/Immunofluorescence: KDEL Antibody (JB42-04) [NBP2-75549] - Staining KDEL in A549 cells (green). The nuclear counter stain is DAPI (blue). Cells were fixed in paraformaldehyde, permeabilised with 0.25% Triton X100/PBS.



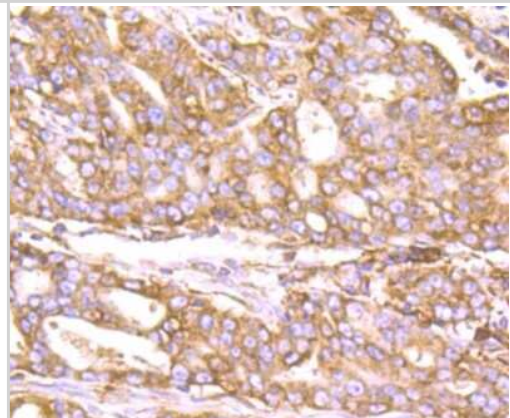
Immunocytochemistry/Immunofluorescence: KDEL Antibody (JB42-04) [NBP2-75549] - Staining KDEL in HepG2 cells (green). The nuclear counter stain is DAPI (blue). Cells were fixed in paraformaldehyde, permeabilised with 0.25% Triton X100/PBS.



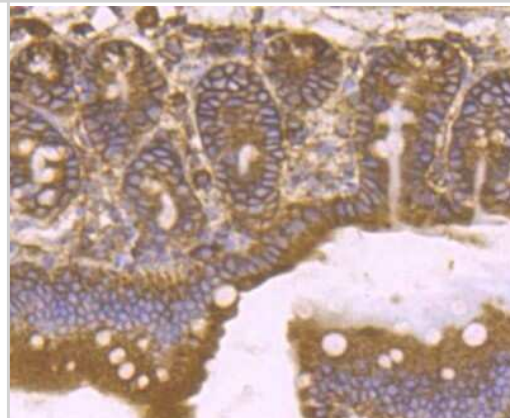
Immunohistochemistry-Paraffin: KDEL Antibody (JB42-04) [NBP2-75549] - Analysis of paraffin-embedded human placenta tissue using anti-KDEL antibody. Counter stained with hematoxylin.



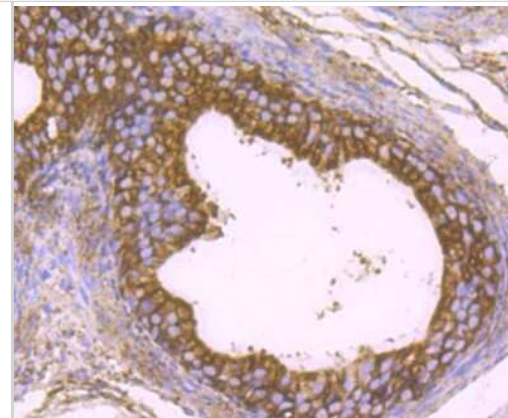
Immunohistochemistry-Paraffin: KDEL Antibody (JB42-04) [NBP2-75549] - Analysis of paraffin-embedded human stomach cancer tissue using anti-KDEL antibody. Counter stained with hematoxylin.



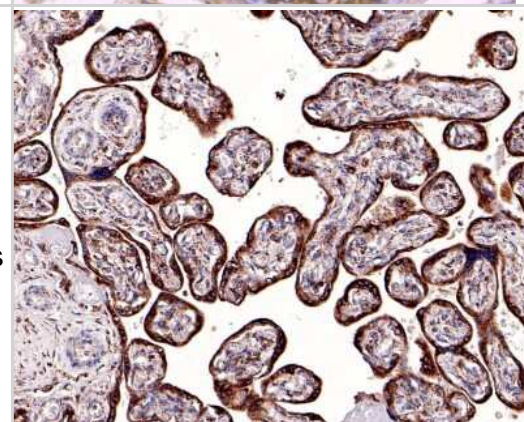
Immunohistochemistry-Paraffin: KDEL Antibody (JB42-04) [NBP2-75549] - Analysis of paraffin-embedded mouse small intestine tissue using anti-KDEL antibody. Counter stained with hematoxylin.



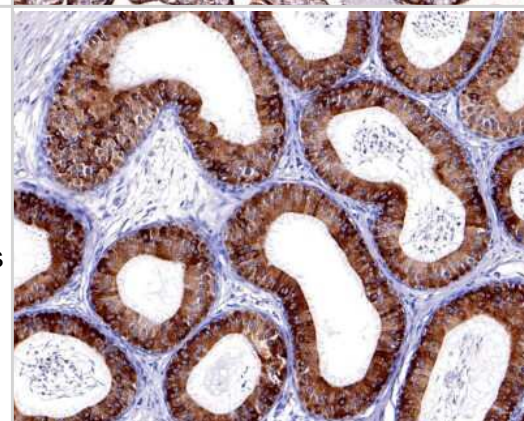
Immunohistochemistry-Paraffin: KDEL Antibody (JB42-04) [NBP2-75549] - Analysis of paraffin-embedded rat epididymis tissue using anti-KDEL antibody. Counter stained with hematoxylin.



Immunohistochemistry-Paraffin: KDEL Antibody (JB42-04) [NBP2-75549] - Analysis of paraffin-embedded human placenta tissue using anti-KDEL antibody. The section was pre-treated using heat mediated antigen retrieval with Tris-EDTA buffer (pH 8.0-8.4) for 20 minutes. The tissues were blocked in 5% BSA for 30 minutes at room temperature, washed with ddH₂O and PBS, and then probed with the primary antibody (1/100) for 30 minutes at room temperature. The detection was performed using an HRP conjugated compact polymer system. DAB was used as the chromogen. Tissues were counterstained with hematoxylin and mounted with DPX.



Immunohistochemistry-Paraffin: KDEL Antibody (JB42-04) [NBP2-75549] - Analysis of paraffin-embedded rat epididymis tissue using anti-KDEL antibody. The section was pre-treated using heat mediated antigen retrieval with Tris-EDTA buffer (pH 8.0-8.4) for 20 minutes. The tissues were blocked in 5% BSA for 30 minutes at room temperature, washed with ddH₂O and PBS, and then probed with the primary antibody (1/400) for 30 minutes at room temperature. The detection was performed using an HRP conjugated compact polymer system. DAB was used as the chromogen. Tissues were counterstained with hematoxylin and mounted with DPX.





Novus Biologicals USA

10730 E. Briarwood Avenue
Centennial, CO 80112
USA
Phone: 303.730.1950
Toll Free: 1.888.506.6887
Fax: 303.730.1966
nb-customerservice@bio-techne.com

Bio-Techne Canada

21 Canmotor Ave
Toronto, ON M8Z 4E6
Canada
Phone: 905.827.6400
Toll Free: 855.668.8722
Fax: 905.827.6402
canada.inquires@bio-techne.com

Bio-Techne Ltd

19 Barton Lane
Abingdon Science Park
Abingdon, OX14 3NB, United Kingdom
Phone: (44) (0) 1235 529449
Free Phone: 0800 37 34 15
Fax: (44) (0) 1235 533420
info.EMEA@bio-techne.com

General Contact Information

www.novusbio.com
Technical Support: nb-technical@bio-
techne.com
Orders: nb-customerservice@bio-techne.com
General: novus@novusbio.com

Limitations

This product is for research use only and is not approved for use in humans or in clinical diagnosis. Primary Antibodies are guaranteed for 1 year from date of receipt.

For more information on our 100% guarantee, please visit www.novusbio.com/guarantee

Earn gift cards/discounts by submitting a review: www.novusbio.com/reviews/submit/NBP2-75549

Earn gift cards/discounts by submitting a publication using this product:
www.novusbio.com/publications

