

Product Datasheet

GIT1 Antibody (JU33-39)

NBP2-75505

Unit Size: 100 ul

Store at 4C short term. Aliquot and store at -20C long term. Avoid freeze-thaw cycles.

www.novusbio.com



technical@novusbio.com

Protocols, Publications, Related Products, Reviews, Research Tools and Images at:
www.novusbio.com/NBP2-75505

Updated 1/3/2023 v.20.1

Earn rewards for product
reviews and publications.

Submit a publication at www.novusbio.com/publications

Submit a review at www.novusbio.com/reviews/destination/NBP2-75505



NBP2-75505

GIT1 Antibody (JU33-39)

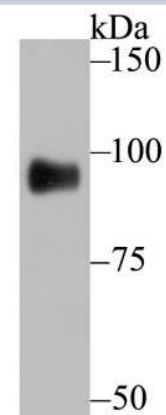
| Product Information | |
|-------------------------|--|
| Unit Size | 100 ul |
| Concentration | 1 mg/ml |
| Storage | Store at 4C short term. Aliquot and store at -20C long term. Avoid freeze-thaw cycles. |
| Clonality | Monoclonal |
| Clone | JU33-39 |
| Preservative | 0.05% Sodium Azide |
| Isotype | IgG |
| Purity | Protein A purified |
| Buffer | TBS (pH7.4), 0.05% BSA, 40% Glycerol |
| Target Molecular Weight | 85 kDa |

| Product Description | |
|---------------------|---|
| Host | Rabbit |
| Gene Symbol | GIT1 |
| Species | Human, Mouse, Rat |
| Immunogen | Recombinant protein within Human GIT1 aa 79-297 . (SwissProt: Q9Y2X7 Human; SwissProt: Q68FF6 Mouse; SwissProt: Q9Z272 Rat) |

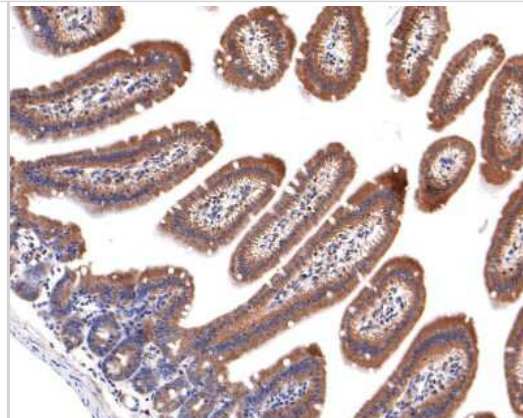
| Product Application Details | |
|-----------------------------|--|
| Applications | Western Blot, Flow Cytometry, Immunohistochemistry, Immunohistochemistry-Paraffin |
| Recommended Dilutions | Western Blot 1:500-1:1000, Flow Cytometry 1:50-1:100, Immunohistochemistry, Immunohistochemistry-Paraffin 1:50-1:400 |

Images

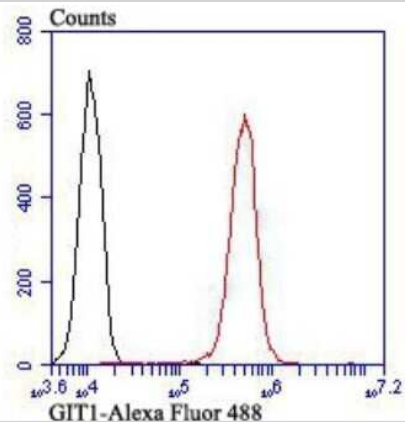
Western Blot: GIT1 Antibody (JU33-39) [NBP2-75505] - Analysis of GIT1 on A549 cell using anti-GIT1 antibody at 1/500 dilution.



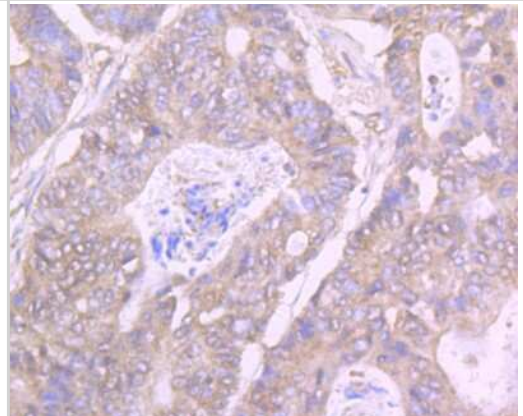
Immunohistochemistry-Paraffin: GIT1 Antibody (JU33-39) [NBP2-75505]
 - Analysis of paraffin-embedded mouse small intestine tissue with Rabbit anti-GIT1 antibody washed with ddH₂O and PBS, and then probed with the primary antibody at 1/400 dilution for 1 hour at room temperature. The detection was performed using an HRP conjugated compact polymer system. DAB was used as the chromogen. Tissues were counterstained with hematoxylin and mounted with DPX.



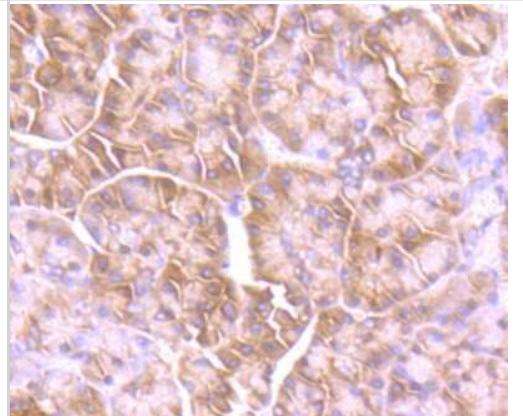
Flow Cytometry: GIT1 Antibody (JU33-39) [NBP2-75505] - Analysis of A549 cells with GIT1 antibody at 1/100 dilution (red) compared with an unlabelled control (cells without incubation with primary antibody; black).



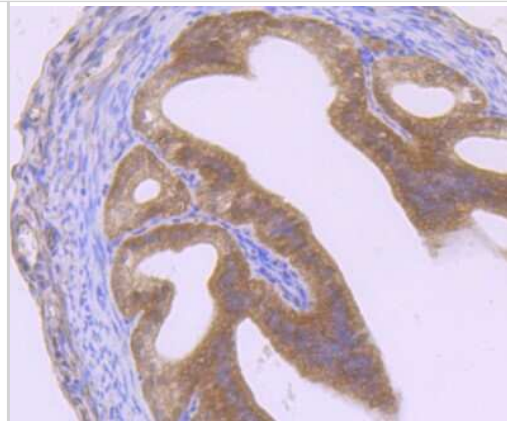
Immunohistochemistry-Paraffin: GIT1 Antibody (JU33-39) [NBP2-75505]
 - Analysis of paraffin-embedded human colon cancer tissue using anti-GIT1 antibody. Counter stained with hematoxylin.



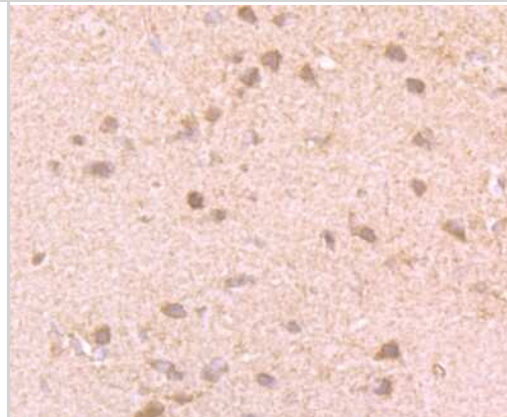
Immunohistochemistry-Paraffin: GIT1 Antibody (JU33-39) [NBP2-75505]
 - Analysis of paraffin-embedded human pancreas tissue using anti-GIT1 antibody. Counter stained with hematoxylin.



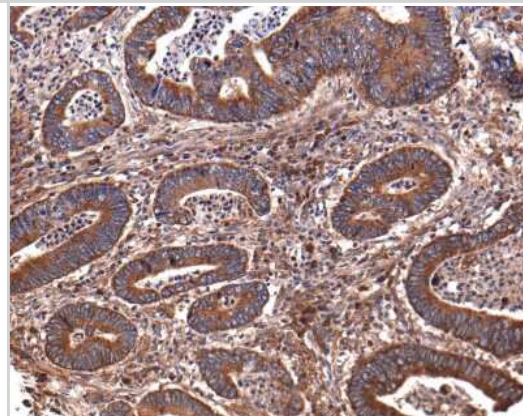
Immunohistochemistry-Paraffin: GIT1 Antibody (JU33-39) [NBP2-75505]
- Analysis of paraffin-embedded mouse fallopian tubes tissue using anti-GIT1 antibody. Counter stained with hematoxylin.



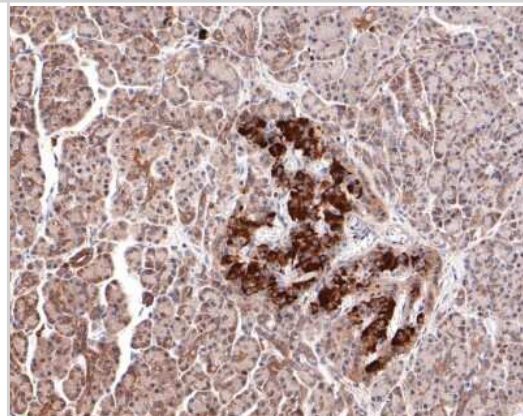
Immunohistochemistry-Paraffin: GIT1 Antibody (JU33-39) [NBP2-75505]
- Analysis of paraffin-embedded rat brain tissue using anti-GIT1 antibody. Counter stained with hematoxylin.



Immunohistochemistry-Paraffin: GIT1 Antibody (JU33-39) [NBP2-75505]
- Analysis of paraffin-embedded human colon carcinoma tissue with Rabbit anti-GIT1 antibody washed with ddH₂O and PBS, and then probed with the primary antibody at 1/400 dilution for 1 hour at room temperature. The detection was performed using an HRP conjugated compact polymer system. DAB was used as the chromogen. Tissues were counterstained with hematoxylin and mounted with DPX.



Immunohistochemistry-Paraffin: GIT1 Antibody (JU33-39) [NBP2-75505]
- Analysis of paraffin-embedded human pancreas tissue with Rabbit anti-GIT1 antibody washed with ddH₂O and PBS, and then probed with the primary antibody at 1/400 dilution for 1 hour at room temperature. The detection was performed using an HRP conjugated compact polymer system. DAB was used as the chromogen. Tissues were counterstained with hematoxylin and mounted with DPX.





Novus Biologicals USA

10730 E. Briarwood Avenue
Centennial, CO 80112
USA
Phone: 303.730.1950
Toll Free: 1.888.506.6887
Fax: 303.730.1966
nb-customerservice@bio-techne.com

Bio-Techne Canada

21 Canmotor Ave
Toronto, ON M8Z 4E6
Canada
Phone: 905.827.6400
Toll Free: 855.668.8722
Fax: 905.827.6402
canada.inquires@bio-techne.com

Bio-Techne Ltd

19 Barton Lane
Abingdon Science Park
Abingdon, OX14 3NB, United Kingdom
Phone: (44) (0) 1235 529449
Free Phone: 0800 37 34 15
Fax: (44) (0) 1235 533420
info.EMEA@bio-techne.com

General Contact Information

www.novusbio.com
Technical Support: nb-technical@bio-techne.com
Orders: nb-customerservice@bio-techne.com
General: novus@novusbio.com

Limitations

This product is for research use only and is not approved for use in humans or in clinical diagnosis. Primary Antibodies are guaranteed for 1 year from date of receipt.

For more information on our 100% guarantee, please visit www.novusbio.com/guarantee

Earn gift cards/discounts by submitting a review: www.novusbio.com/reviews/submit/NBP2-75505

Earn gift cards/discounts by submitting a publication using this product:
www.novusbio.com/publications

