

Product Datasheet

Dcp1a Antibody (JB51-34) NBP2-75463

Unit Size: 100 ul

Store at 4C short term. Aliquot and store at -20C long term. Avoid freeze-thaw cycles.

www.novusbio.com



technical@novusbio.com

Protocols, Publications, Related Products, Reviews, Research Tools and Images at:
www.novusbio.com/NBP2-75463

Updated 1/3/2023 v.20.1

Earn rewards for product
reviews and publications.

Submit a publication at www.novusbio.com/publications

Submit a review at www.novusbio.com/reviews/destination/NBP2-75463



NBP2-75463

Dcp1a Antibody (JB51-34)

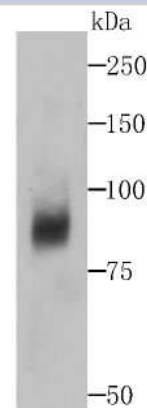
Product Information	
Unit Size	100 ul
Concentration	1 mg/ml
Storage	Store at 4C short term. Aliquot and store at -20C long term. Avoid freeze-thaw cycles.
Clonality	Monoclonal
Clone	JB51-34
Preservative	0.05% Sodium Azide
Isotype	IgG
Purity	Protein A purified
Buffer	TBS (pH7.4), 0.05% BSA, 40% Glycerol
Target Molecular Weight	63 kDa

Product Description	
Host	Rabbit
Gene Symbol	DCP1A
Species	Human
Immunogen	Recombinant protein within Human Dcp1a aa 460-582 / 582. (SwissProt: Q9NPI6 Human)

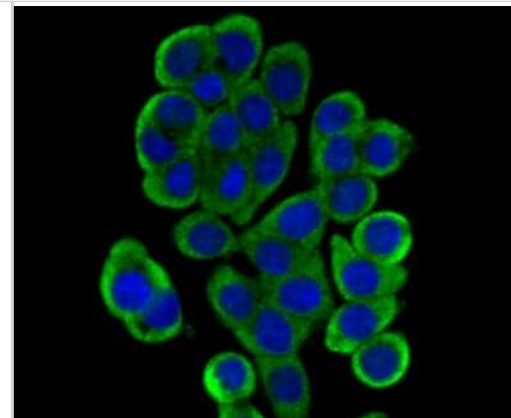
Product Application Details	
Applications	Western Blot, Flow Cytometry, Immunocytochemistry/ Immunofluorescence, Immunohistochemistry, Immunohistochemistry-Paraffin
Recommended Dilutions	Western Blot 1:500-1:2000, Flow Cytometry 1:50-1:100, Immunohistochemistry, Immunocytochemistry/ Immunofluorescence 1:50-1:200, Immunohistochemistry-Paraffin 1:50-1:200

Images

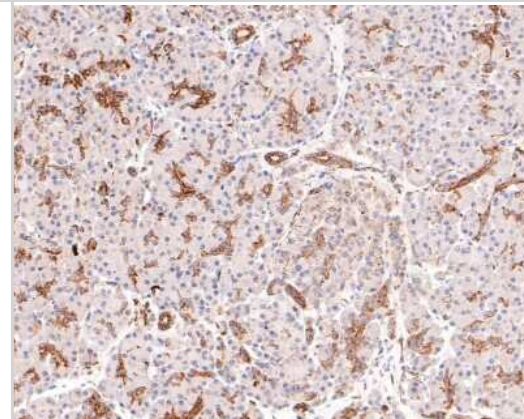
Western Blot: Dcp1a Antibody (JB51-34) [NBP2-75463] - Analysis of Dcp1a on human liver tissue lysates using anti-Dcp1a antibody at 1/500 dilution.



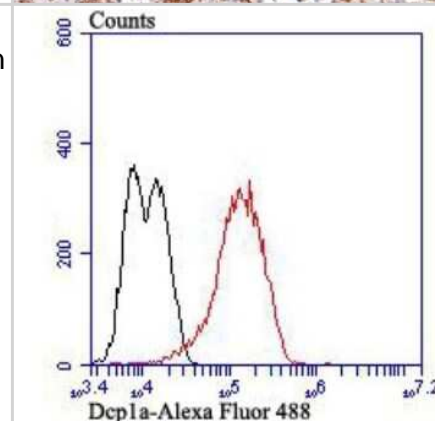
Immunocytochemistry/Immunofluorescence: Dcp1a Antibody (JB51-34) [NBP2-75463] - Staining Dcp1a in LOVO cells (green). The nuclear counter stain is DAPI (blue). Cells were fixed in paraformaldehyde, permeabilised with 0.25% Triton X100/PBS.



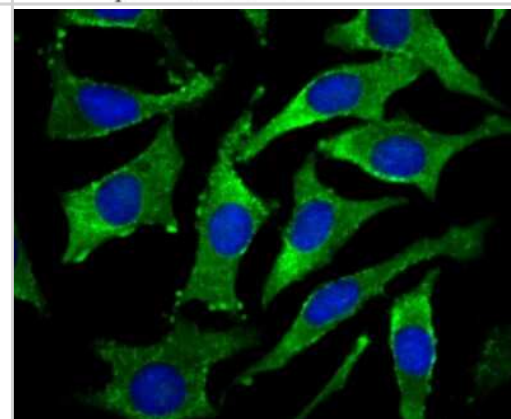
Immunohistochemistry-Paraffin: Dcp1a Antibody (JB51-34) [NBP2-75463] - Analysis of paraffin-embedded human pancreas tissue with Rabbit anti-Dcp1a antibody washed with ddH₂O and PBS, and then probed with the primary antibody at 1/400 dilution for 1 hour at room temperature. The detection was performed using an HRP conjugated compact polymer system. DAB was used as the chromogen. Tissues were counterstained with hematoxylin and mounted with DPX.



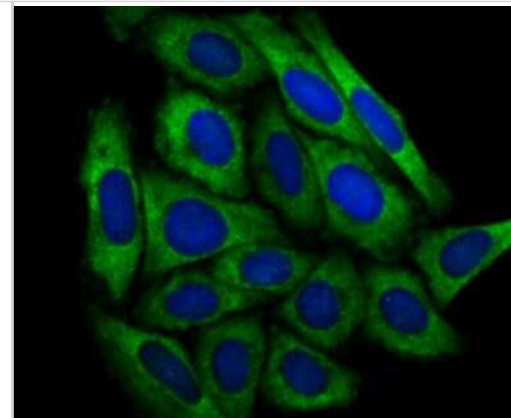
Flow Cytometry: Dcp1a Antibody (JB51-34) [NBP2-75463] - Analysis of LOVO cells with Dcp1a antibody at 1/100 dilution (red) compared with an unlabelled control (cells without incubation with primary antibody; black). Alexa Fluor 488-conjugated goat anti-rabbit IgG was used as the secondary antibody.



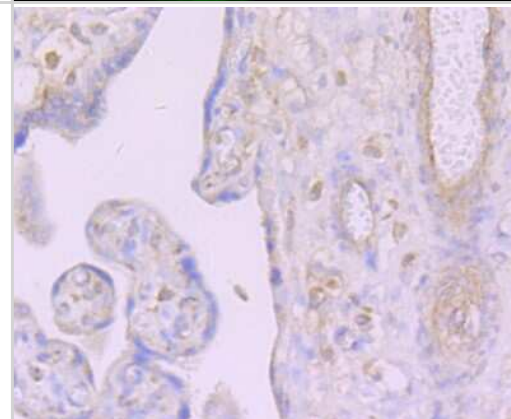
Immunocytochemistry/Immunofluorescence: Dcp1a Antibody (JB51-34) [NBP2-75463] - Staining Dcp1a in SH-SY-5Y cells (green). The nuclear counter stain is DAPI (blue). Cells were fixed in paraformaldehyde, permeabilised with 0.25% Triton X100/PBS.



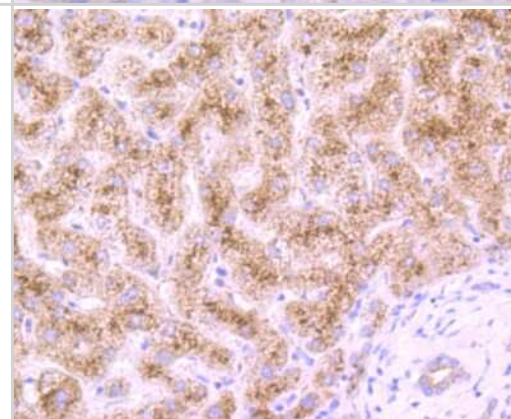
Immunocytochemistry/Immunofluorescence: Dcp1a Antibody (JB51-34) [NBP2-75463] - Staining Dcp1a in SiHa cells (green). The nuclear counter stain is DAPI (blue). Cells were fixed in paraformaldehyde, permeabilised with 0.25% Triton X100/PBS.



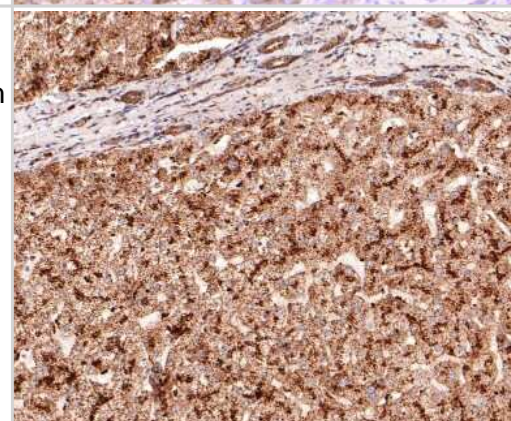
Immunohistochemistry-Paraffin: Dcp1a Antibody (JB51-34) [NBP2-75463] - Analysis of paraffin-embedded human placenta tissue using anti-Dcp1a antibody. Counter stained with hematoxylin.



Immunohistochemistry-Paraffin: Dcp1a Antibody (JB51-34) [NBP2-75463] - Analysis of paraffin-embedded human liver tissue using anti-Dcp1a antibody. Counter stained with hematoxylin.



Immunohistochemistry-Paraffin: Dcp1a Antibody (JB51-34) [NBP2-75463] - Analysis of paraffin-embedded human liver tissue with Rabbit anti-Dcp1a antibody washed with ddH₂O and PBS, and then probed with the primary antibody at 1/400 dilution for 1 hour at room temperature. The detection was performed using an HRP conjugated compact polymer system. DAB was used as the chromogen. Tissues were counterstained with hematoxylin and mounted with DPX.





Novus Biologicals USA

10730 E. Briarwood Avenue
Centennial, CO 80112
USA
Phone: 303.730.1950
Toll Free: 1.888.506.6887
Fax: 303.730.1966
nb-customerservice@bio-techne.com

Bio-Techne Canada

21 Canmotor Ave
Toronto, ON M8Z 4E6
Canada
Phone: 905.827.6400
Toll Free: 855.668.8722
Fax: 905.827.6402
canada.inquires@bio-techne.com

Bio-Techne Ltd

19 Barton Lane
Abingdon Science Park
Abingdon, OX14 3NB, United Kingdom
Phone: (44) (0) 1235 529449
Free Phone: 0800 37 34 15
Fax: (44) (0) 1235 533420
info.EMEA@bio-techne.com

General Contact Information

www.novusbio.com
Technical Support: nb-technical@bio-techne.com
Orders: nb-customerservice@bio-techne.com
General: novus@novusbio.com

Limitations

This product is for research use only and is not approved for use in humans or in clinical diagnosis. Primary Antibodies are guaranteed for 1 year from date of receipt.

For more information on our 100% guarantee, please visit www.novusbio.com/guarantee

Earn gift cards/discounts by submitting a review: www.novusbio.com/reviews/submit/NBP2-75463

Earn gift cards/discounts by submitting a publication using this product:
www.novusbio.com/publications

