

Product Datasheet

CSE1L/CAS/Exportin-2 Antibody (JU34-33) NBP2-75451

Unit Size: 100 ul

Store at 4C short term. Aliquot and store at -20C long term. Avoid freeze-thaw cycles.

www.novusbio.com



technical@novusbio.com

Publications: 1

Protocols, Publications, Related Products, Reviews, Research Tools and Images at:
www.novusbio.com/NBP2-75451

Updated 1/3/2023 v.20.1

Earn rewards for product
reviews and publications.

Submit a publication at www.novusbio.com/publications

Submit a review at www.novusbio.com/reviews/destination/NBP2-75451



NBP2-75451

CSE1L/CAS/Exportin-2 Antibody (JU34-33)

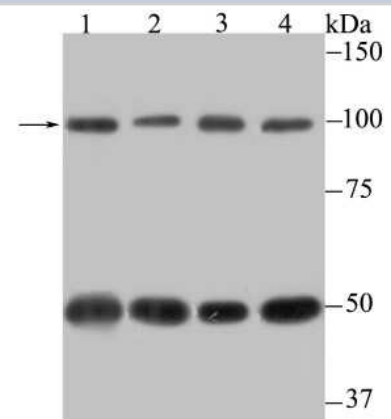
Product Information	
Unit Size	100 ul
Concentration	1 mg/ml
Storage	Store at 4C short term. Aliquot and store at -20C long term. Avoid freeze-thaw cycles.
Clonality	Monoclonal
Clone	JU34-33
Preservative	0.05% Sodium Azide
Isotype	IgG
Purity	Protein A purified
Buffer	TBS (pH7.4), 0.05% BSA, 40% Glycerol
Target Molecular Weight	110 kDa

Product Description	
Host	Rabbit
Gene Symbol	CSE1L
Species	Human, Mouse, Rat
Immunogen	Recombinant protein within Human CSE1L/CAS/Exportin-2 aa 860-971 / 971. (SwissProt: P55060 Human; SwissProt: Q9ERK4 Mouse)

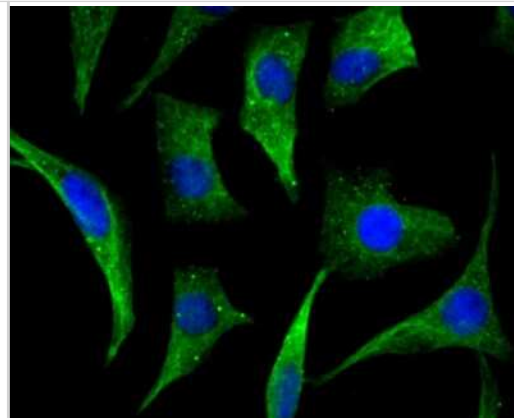
Product Application Details	
Applications	Western Blot, Flow Cytometry, Immunocytochemistry/ Immunofluorescence, Immunohistochemistry, Immunohistochemistry-Paraffin
Recommended Dilutions	Western Blot 1:500-1:1000, Flow Cytometry 1:50-1:100, Immunohistochemistry, Immunocytochemistry/ Immunofluorescence 1:50-1:200, Immunohistochemistry-Paraffin 1:50-1:200

Images

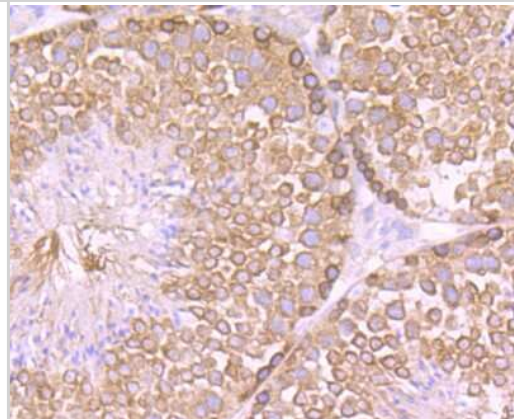
Western Blot: CSE1L/CAS/Exportin-2 Antibody (JU34-33) [NBP2-75451]
 - Analysis of Cellular Apoptosis Susceptibility on different lysates using anti-Cellular Apoptosis Susceptibility antibody at 1/500 dilution. Positive control: Lane 1: Mouse testis Lane 2: SiHa Lane 3: SK-BR-3 Lane 4: PC-3M



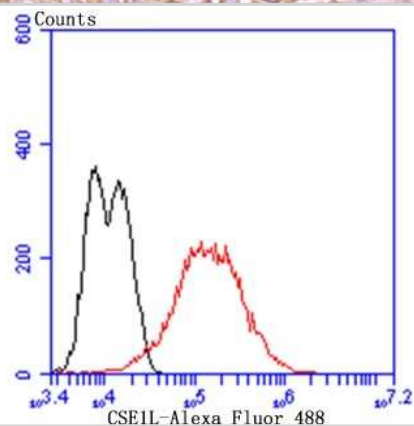
Immunocytochemistry/Immunofluorescence: CSE1L/CAS/Exportin-2 Antibody (JU34-33) [NBP2-75451] - Staining Cellular Apoptosis Susceptibility in SH-SY5Y cells (green). The nuclear counter stain is DAPI (blue). Cells were fixed in paraformaldehyde, permeabilised with 0.25% Triton X100/PBS.



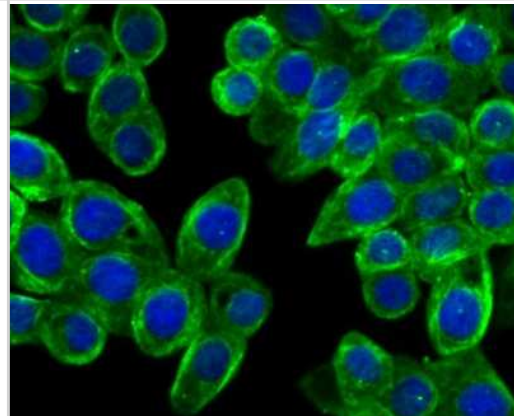
Immunohistochemistry-Paraffin: CSE1L/CAS/Exportin-2 Antibody (JU34-33) [NBP2-75451] - Analysis of paraffin-embedded mouse testis tissue using anti-Cellular Apoptosis Susceptibility antibody. Counter stained with hematoxylin.



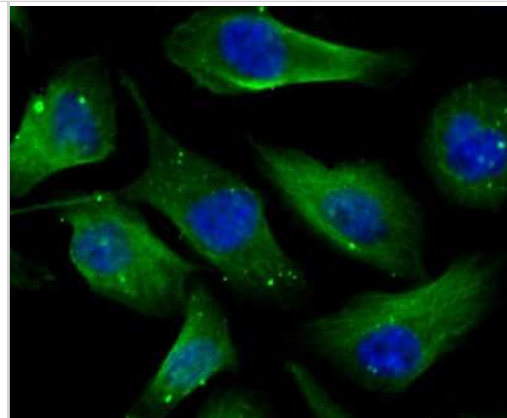
Flow Cytometry: CSE1L/CAS/Exportin-2 Antibody (JU34-33) [NBP2-75451] - Analysis of LOVO cells with Cellular Apoptosis Susceptibility antibody at 1/100 dilution (red) compared with an unlabelled control (cells without incubation with primary antibody; black). Alexa Fluor 488-conjugated goat anti-rabbit IgG was used as the secondary antibody.



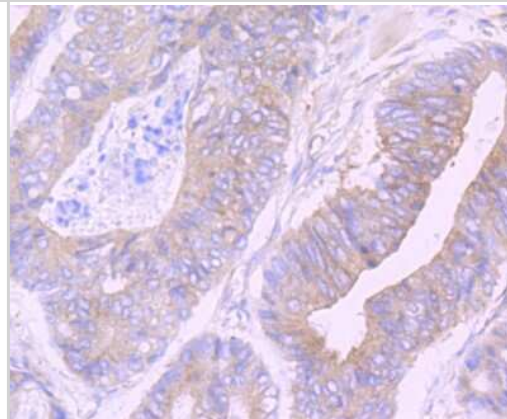
Immunocytochemistry/Immunofluorescence: CSE1L/CAS/Exportin-2 Antibody (JU34-33) [NBP2-75451] - Staining Cellular Apoptosis Susceptibility in LOVO cells (green). The nuclear counter stain is DAPI (blue). Cells were fixed in paraformaldehyde, permeabilised with 0.25% Triton X100/PBS.



Immunocytochemistry/Immunofluorescence: CSE1L/CAS/Exportin-2 Antibody (JU34-33) [NBP2-75451] - Staining Cellular Apoptosis Susceptibility in PC-3M cells (green). The nuclear counter stain is DAPI (blue). Cells were fixed in paraformaldehyde, permeabilised with 0.25% Triton X100/PBS.



Immunohistochemistry-Paraffin: CSE1L/CAS/Exportin-2 Antibody (JU34-33) [NBP2-75451] - Analysis of paraffin-embedded human colon cancer tissue using anti-Cellular Apoptosis Susceptibility antibody. Counter stained with hematoxylin.



Publications

Sarcar B, Fang B, Izumi V et al. A comparative proteomics analysis identified differentially expressed proteins in pancreatic cancer-associated stellate cell small extracellular vesicles Molecular & Cellular Proteomics 2022-11-01 [PMID: 36332889] (WB, Human)



Novus Biologicals USA

10730 E. Briarwood Avenue
Centennial, CO 80112
USA
Phone: 303.730.1950
Toll Free: 1.888.506.6887
Fax: 303.730.1966
nb-customerservice@bio-techne.com

Bio-Techne Canada

21 Canmotor Ave
Toronto, ON M8Z 4E6
Canada
Phone: 905.827.6400
Toll Free: 855.668.8722
Fax: 905.827.6402
canada.inquires@bio-techne.com

Bio-Techne Ltd

19 Barton Lane
Abingdon Science Park
Abingdon, OX14 3NB, United Kingdom
Phone: (44) (0) 1235 529449
Free Phone: 0800 37 34 15
Fax: (44) (0) 1235 533420
info.EMEA@bio-techne.com

General Contact Information

www.novusbio.com
Technical Support: nb-technical@bio-techne.com
Orders: nb-customerservice@bio-techne.com
General: novus@novusbio.com

Limitations

This product is for research use only and is not approved for use in humans or in clinical diagnosis. Primary Antibodies are guaranteed for 1 year from date of receipt.

For more information on our 100% guarantee, please visit www.novusbio.com/guarantee

Earn gift cards/discounts by submitting a review: www.novusbio.com/reviews/submit/NBP2-75451

Earn gift cards/discounts by submitting a publication using this product:
www.novusbio.com/publications

