

Product Datasheet

CS Citrate Synthase Antibody (JU80-30) NBP2-75450

Unit Size: 100 ul

Store at 4C short term. Aliquot and store at -20C long term. Avoid freeze-thaw cycles.

www.novusbio.com



technical@novusbio.com

Protocols, Publications, Related Products, Reviews, Research Tools and Images at:
www.novusbio.com/NBP2-75450

Updated 1/3/2023 v.20.1

Earn rewards for product
reviews and publications.

Submit a publication at www.novusbio.com/publications

Submit a review at www.novusbio.com/reviews/destination/NBP2-75450



NBP2-75450**CS Citrate Synthase Antibody (JU80-30)**

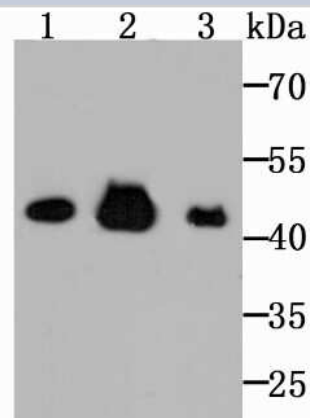
| Product Information | |
|-------------------------|--|
| Unit Size | 100 ul |
| Concentration | 1 mg/ml |
| Storage | Store at 4C short term. Aliquot and store at -20C long term. Avoid freeze-thaw cycles. |
| Clonality | Monoclonal |
| Clone | JU80-30 |
| Preservative | 0.05% Sodium Azide |
| Isotype | IgG |
| Purity | Protein A purified |
| Buffer | TBS (pH7.4), 0.05% BSA, 40% Glycerol |
| Target Molecular Weight | 52 kDa |

| Product Description | |
|---------------------|---|
| Host | Rabbit |
| Gene Symbol | CS |
| Species | Human, Mouse, Rat |
| Immunogen | Synthetic peptide within Human CS Citrate Synthase aa 417-466 / 466. (SwissProt: O75390 Human; SwissProt: Q9CZU6 Mouse; SwissProt: Q8VHF5 Rat) |

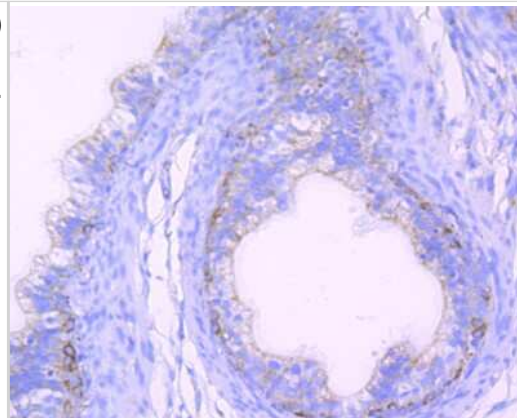
| Product Application Details | |
|-----------------------------|--|
| Applications | Western Blot, Flow Cytometry, Immunohistochemistry, Immunohistochemistry-Paraffin |
| Recommended Dilutions | Western Blot 1:500-1:1000, Flow Cytometry 1:50-1:200, Immunohistochemistry, Immunohistochemistry-Paraffin 1:50-1:100 |

Images

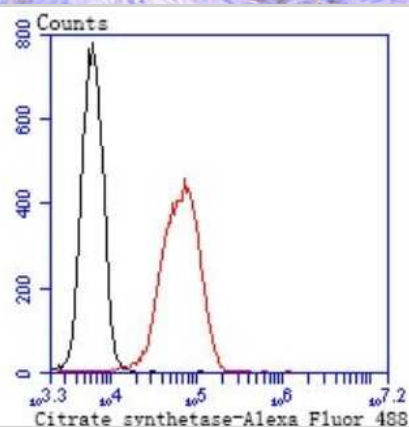
Western Blot: CS Citrate Synthase Antibody (JU80-30) [NBP2-75450] - Analysis of Citrate synthetase on Hela cell using anti-Citrate synthetase antibody at 1/1,000 dilution. Positive control: Lane 1: Rat kidney tissue
Lane 2: Hela Lane 3: Mouse brain tissue



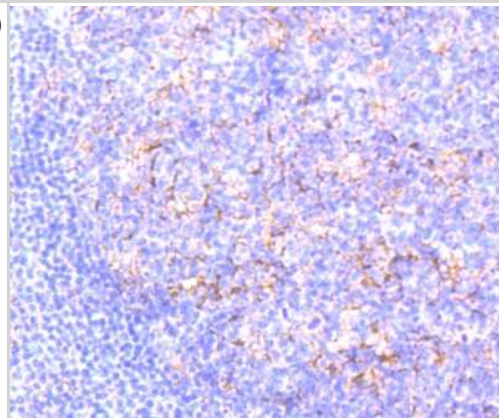
Immunohistochemistry-Paraffin: CS Citrate Synthase Antibody (JU80-30) [NBP2-75450] - Analysis of paraffin-embedded rat epididymis tissue using anti-Citrate synthetase antibody. Counter stained with hematoxylin.



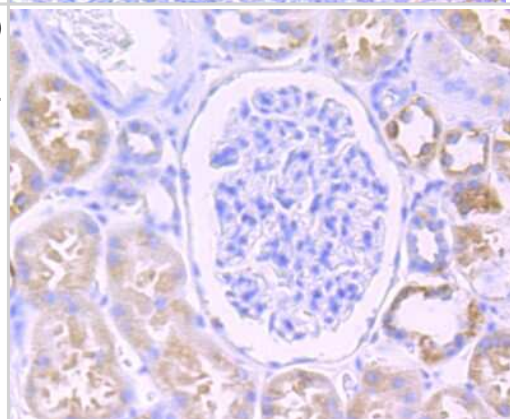
Flow Cytometry: CS Citrate Synthase Antibody (JU80-30) [NBP2-75450] - Analysis of 293T cells with Citrate synthetase antibody at 1/50 dilution (blue) compared with an unlabelled control (cells without incubation with primary antibody; red). Alexa Fluor 488-conjugated goat anti rabbit IgG was used as the secondary antibody.



Immunohistochemistry-Paraffin: CS Citrate Synthase Antibody (JU80-30) [NBP2-75450] - Analysis of paraffin-embedded human tonsil tissue using anti-Citrate synthetase antibody. Counter stained with hematoxylin.



Immunohistochemistry-Paraffin: CS Citrate Synthase Antibody (JU80-30) [NBP2-75450] - Analysis of paraffin-embedded human kidney tissue using anti-Citrate synthetase antibody. Counter stained with hematoxylin.





Novus Biologicals USA

10730 E. Briarwood Avenue
Centennial, CO 80112
USA
Phone: 303.730.1950
Toll Free: 1.888.506.6887
Fax: 303.730.1966
nb-customerservice@bio-techne.com

Bio-Techne Canada

21 Canmotor Ave
Toronto, ON M8Z 4E6
Canada
Phone: 905.827.6400
Toll Free: 855.668.8722
Fax: 905.827.6402
canada.inquires@bio-techne.com

Bio-Techne Ltd

19 Barton Lane
Abingdon Science Park
Abingdon, OX14 3NB, United Kingdom
Phone: (44) (0) 1235 529449
Free Phone: 0800 37 34 15
Fax: (44) (0) 1235 533420
info.EMEA@bio-techne.com

General Contact Information

www.novusbio.com
Technical Support: nb-technical@bio-techne.com
Orders: nb-customerservice@bio-techne.com
General: novus@novusbio.com

Limitations

This product is for research use only and is not approved for use in humans or in clinical diagnosis. Primary Antibodies are guaranteed for 1 year from date of receipt.

For more information on our 100% guarantee, please visit www.novusbio.com/guarantee

Earn gift cards/discounts by submitting a review: www.novusbio.com/reviews/submit/NBP2-75450

Earn gift cards/discounts by submitting a publication using this product:
www.novusbio.com/publications

