

Product Datasheet

CRM1 Antibody (JB35-22) NBP2-75448

Unit Size: 100 ul

Store at 4C short term. Aliquot and store at -20C long term. Avoid freeze-thaw cycles.

www.novusbio.com



technical@novusbio.com

Protocols, Publications, Related Products, Reviews, Research Tools and Images at:
www.novusbio.com/NBP2-75448

Updated 1/3/2023 v.20.1

Earn rewards for product
reviews and publications.

Submit a publication at www.novusbio.com/publications

Submit a review at www.novusbio.com/reviews/destination/NBP2-75448



NBP2-75448

CRM1 Antibody (JB35-22)

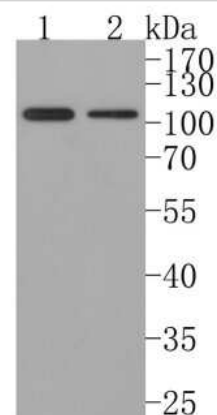
Product Information	
Unit Size	100 ul
Concentration	1 mg/ml
Storage	Store at 4C short term. Aliquot and store at -20C long term. Avoid freeze-thaw cycles.
Clonality	Monoclonal
Clone	JB35-22
Preservative	0.05% Sodium Azide
Isotype	IgG
Purity	Protein A purified
Buffer	TBS (pH7.4), 0.05% BSA, 40% Glycerol
Target Molecular Weight	123 kDa

Product Description	
Host	Rabbit
Gene Symbol	XPO1
Species	Human, Mouse, Rat
Immunogen	Recombinant protein within C-terminal Human CRM1. (SwissProt: O14980 Human; SwissProt: Q6P5F9 Mouse; SwissProt: Q80U96 Rat)

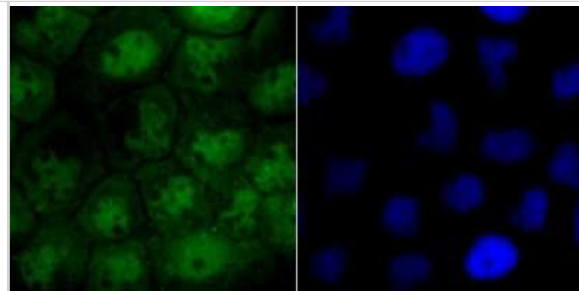
Product Application Details	
Applications	Western Blot, Flow Cytometry, Immunocytochemistry/ Immunofluorescence, Immunohistochemistry, Immunohistochemistry-Paraffin
Recommended Dilutions	Western Blot 1:500, Flow Cytometry 1:50-1:100, Immunohistochemistry, Immunocytochemistry/ Immunofluorescence 1:50-1:200, Immunohistochemistry-Paraffin 1:50-1:400

Images

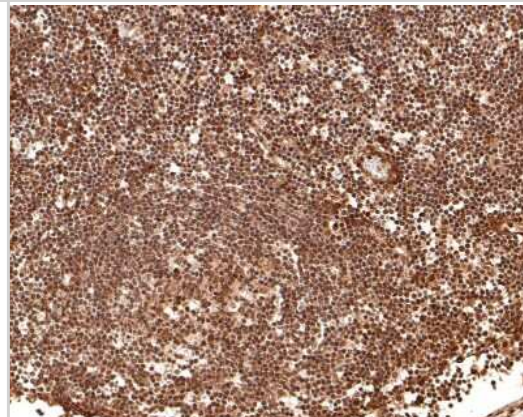
Western Blot: CRM1 Antibody (JB35-22) [NBP2-75448] - Analysis of CRM1 on different lysates. Proteins were transferred to a PVDF membrane and blocked with 5% NFDm/TBST in PBS for 1 hour at room temperature. The primary antibody (1/500) was used in 5% NFDm/TBST at room temperature for 2 hours. Goat Anti-Rabbit IgG - HRP Secondary Antibody at 1:200,000 dilution was used for 1 hour at room temperature. Positive control: Lane 1: Hela cell lysate Lane 2: 293T cell lysate
 Predicted band size: 123 kDa Observed band size: 110 kDa



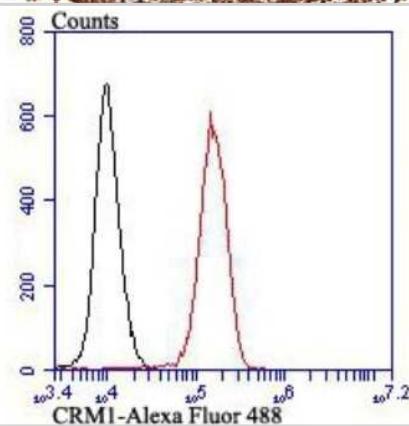
Immunocytochemistry/Immunofluorescence: CRM1 Antibody (JB35-22) [NBP2-75448] - Staining CRM1 in A431 cells (green). The nuclear counter stain is DAPI (blue). Cells were fixed in paraformaldehyde, permeabilised with 0.25% Triton X100/PBS.



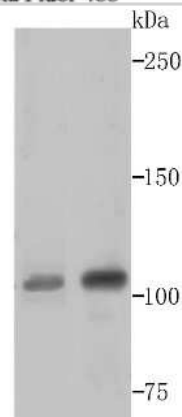
Immunohistochemistry-Paraffin: CRM1 Antibody (JB35-22) [NBP2-75448] - Analysis of paraffin-embedded human lymph node tissue with Rabbit anti-CRM1 antibody washed with ddH₂O and PBS, and then probed with the primary antibody at 1/100 dilution for 1 hour at room temperature. The detection was performed using an HRP conjugated compact polymer system. DAB was used as the chromogen. Tissues were counterstained with hematoxylin and mounted with DPX.



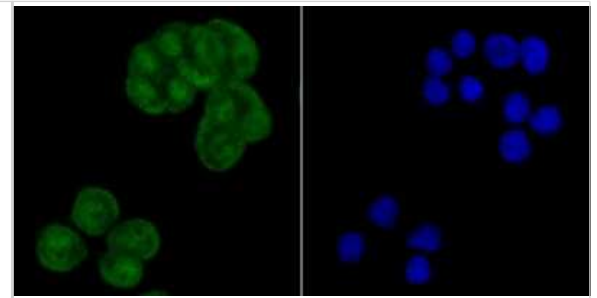
Flow Cytometry: CRM1 Antibody (JB35-22) [NBP2-75448] - Analysis of K562 cells with CRM1 antibody at 1/100 dilution (red) compared with an unlabelled control (cells without incubation with primary antibody; black). Alexa Fluor 488-conjugated goat anti rabbit IgG was used as the secondary antibody.



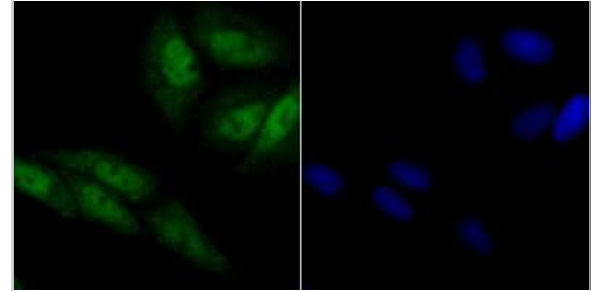
Western Blot: CRM1 Antibody (JB35-22) [NBP2-75448] - Analysis of CRM1 on 293T and Hela cell lysates using anti-CRM1 antibody at 1/500 dilution.



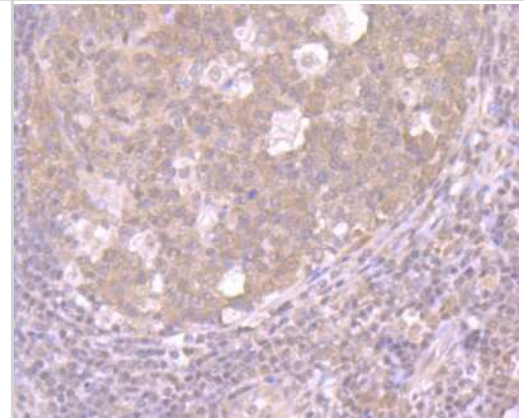
Immunocytochemistry/Immunofluorescence: CRM1 Antibody (JB35-22) [NBP2-75448] - Staining CRM1 in LOVO cells (green). The nuclear counter stain is DAPI (blue). Cells were fixed in paraformaldehyde, permeabilised with 0.25% Triton X100/PBS.



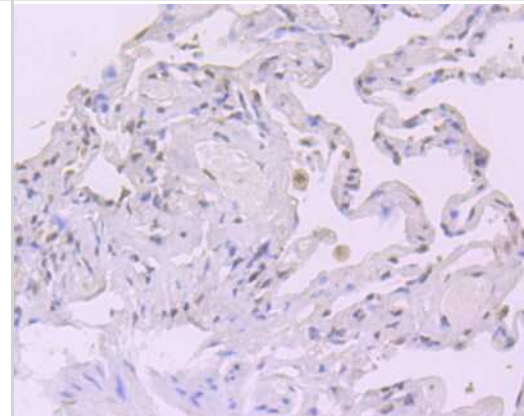
Immunocytochemistry/Immunofluorescence: CRM1 Antibody (JB35-22) [NBP2-75448] - Staining CRM1 in SiHa cells (green). The nuclear counter stain is DAPI (blue). Cells were fixed in paraformaldehyde, permeabilised with 0.25% Triton X100/PBS.



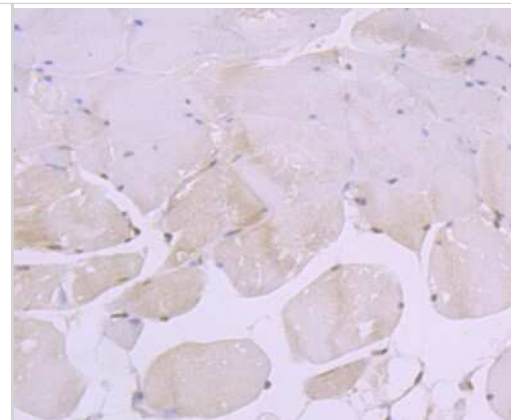
Immunohistochemistry-Paraffin: CRM1 Antibody (JB35-22) [NBP2-75448] - Analysis of paraffin-embedded human tonsil tissue using anti-CRM1 antibody. Counter stained with hematoxylin.



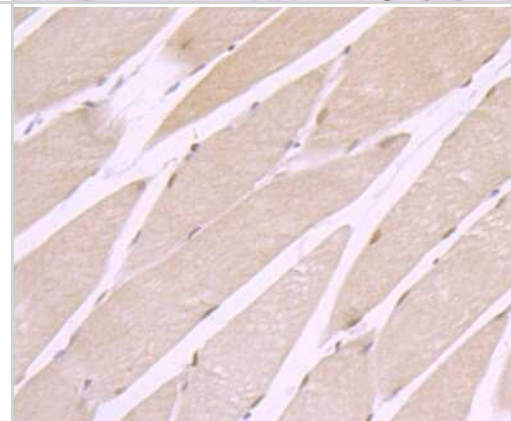
Immunohistochemistry-Paraffin: CRM1 Antibody (JB35-22) [NBP2-75448] - Analysis of paraffin-embedded human lung cancer tissue using anti-CRM1 antibody. Counter stained with hematoxylin.



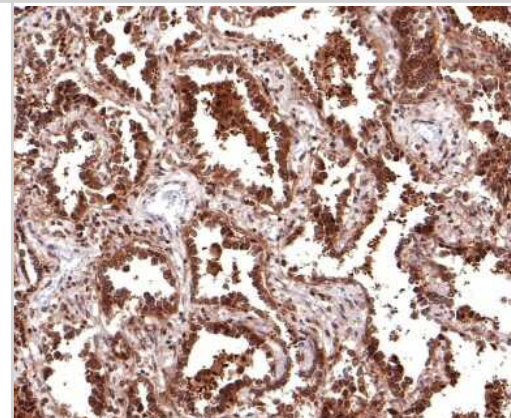
Immunohistochemistry-Paraffin: CRM1 Antibody (JB35-22) [NBP2-75448] - Analysis of paraffin-embedded mouse skeletal muscle tissue using anti-CRM1 antibody. Counter stained with hematoxylin.



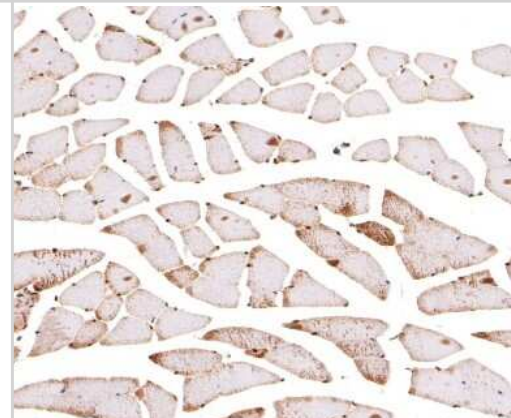
Immunohistochemistry-Paraffin: CRM1 Antibody (JB35-22) [NBP2-75448] - Analysis of paraffin-embedded rat skeletal muscle tissue using anti-CRM1 antibody. Counter stained with hematoxylin.



Immunohistochemistry-Paraffin: CRM1 Antibody (JB35-22) [NBP2-75448] - Analysis of paraffin-embedded human lung carcinoma tissue with Rabbit anti-CRM1 antibody washed with ddH2O and PBS, and then probed with the primary antibody at 1/400 dilution for 1 hour at room temperature. The detection was performed using an HRP conjugated compact polymer system. DAB was used as the chromogen. Tissues were counterstained with hematoxylin and mounted with DPX.



Immunohistochemistry-Paraffin: CRM1 Antibody (JB35-22) [NBP2-75448] - Analysis of paraffin-embedded mouse skeletal muscle tissue with Rabbit anti-CRM1 antibody washed with ddH2O and PBS, and then probed with the primary antibody at 1/100 dilution for 1 hour at room temperature. The detection was performed using an HRP conjugated compact polymer system. DAB was used as the chromogen. Tissues were counterstained with hematoxylin and mounted with DPX.





Novus Biologicals USA

10730 E. Briarwood Avenue
Centennial, CO 80112
USA
Phone: 303.730.1950
Toll Free: 1.888.506.6887
Fax: 303.730.1966
nb-customerservice@bio-techne.com

Bio-Techne Canada

21 Canmotor Ave
Toronto, ON M8Z 4E6
Canada
Phone: 905.827.6400
Toll Free: 855.668.8722
Fax: 905.827.6402
canada.inquires@bio-techne.com

Bio-Techne Ltd

19 Barton Lane
Abingdon Science Park
Abingdon, OX14 3NB, United Kingdom
Phone: (44) (0) 1235 529449
Free Phone: 0800 37 34 15
Fax: (44) (0) 1235 533420
info.EMEA@bio-techne.com

General Contact Information

www.novusbio.com
Technical Support: nb-technical@bio-techne.com
Orders: nb-customerservice@bio-techne.com
General: novus@novusbio.com

Limitations

This product is for research use only and is not approved for use in humans or in clinical diagnosis. Primary Antibodies are guaranteed for 1 year from date of receipt.

For more information on our 100% guarantee, please visit www.novusbio.com/guarantee

Earn gift cards/discounts by submitting a review: www.novusbio.com/reviews/submit/NBP2-75448

Earn gift cards/discounts by submitting a publication using this product:
www.novusbio.com/publications

