

# Product Datasheet

## **Siglec-2/CD22 Antibody (hL22 (Epratuzumab)) - Chimeric - Azide and BSA Free NBP2-75189**

Unit Size: 0.2 mg

Store at 4C for up to 3 months. For longer storage, aliquot and store at -20C.

[www.novusbio.com](http://www.novusbio.com)



[technical@novusbio.com](mailto:technical@novusbio.com)

Protocols, Publications, Related Products, Reviews, Research Tools and Images at:  
[www.novusbio.com/NBP2-75189](http://www.novusbio.com/NBP2-75189)

Updated 4/19/2023 v.20.1

Earn rewards for product  
reviews and publications.

Submit a publication at [www.novusbio.com/publications](http://www.novusbio.com/publications)

Submit a review at [www.novusbio.com/reviews/destination/NBP2-75189](http://www.novusbio.com/reviews/destination/NBP2-75189)



**NBP2-75189**

Siglec-2/CD22 Antibody (hL22 (Epratuzumab)) - Chimeric - Azide and BSA Free

Product Information	
Unit Size	0.2 mg
Concentration	1 mg/ml
Storage	Store at 4C for up to 3 months. For longer storage, aliquot and store at -20C.
Clonality	Monoclonal
Clone	hL22 (Epratuzumab)
Preservative	0.02% Proclin 300
Isotype	IgG Kappa
Purity	Protein A purified
Buffer	PBS

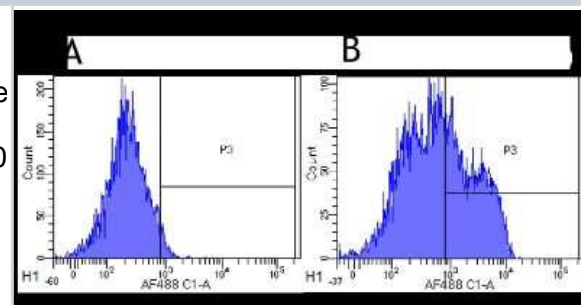
Product Description	
Host	Rabbit
Gene ID	933
Gene Symbol	CD22
Species	Human, Cynomolgus Monkey, Rhesus Macaque
Specificity/Sensitivity	This antibody is specific for the 3rd Ig-like domain of human CD22 (epitope B), a cell surface glycoprotein present on mature B-cells and on many types of malignant B-cells.
Immunogen	This antibody was prepared by the humanization of LL2 (EPB-2), a murine anti-CD22 IgG2a raised against Raji Burkitt lymphoma cells. Murine sequences comprise 5-10% of the molecule, with the remainder being human framework sequences, which greatly reduces the potential for immunogenicity (Traczewski, 2010).

Product Application Details	
Applications	Flow Cytometry, Immunoprecipitation, Block/Neutralize
Recommended Dilutions	Flow Cytometry 1:100 - 1:1000, Immunoprecipitation 1:10 - 1:500, Block/Neutralize
Application Notes	This chimeric rabbit antibody was made using the variable domain sequences of the original Human IgG1 format, for improved compatibility with existing reagents, assays and techniques.

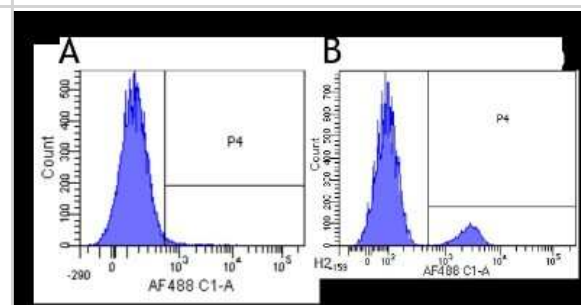


## Images

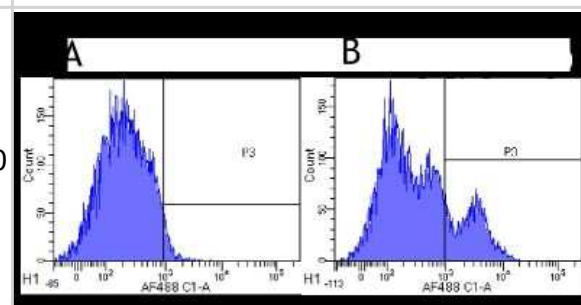
Flow Cytometry: Siglec-2/CD22 Antibody (hL22 (Epratuzumab)) - Chimeric [NBP2-75189] - Flow-cytometry using anti-CD22 antibody Epratuzumab. Rhesus monkey lymphocytes were stained with an isotype control (NBP2-52636, panel A) or the rabbit-chimeric version of Epratuzumab (NBP2-75189, panel B) at a concentration of 1 ug/ml for 30 mins at RT. After washing, bound antibody was detected using a AF488 conjugated donkey anti-rabbit antibody and cells analysed on a FACSCanto flow-cytometer.



Flow Cytometry: Siglec-2/CD22 Antibody (hL22 (Epratuzumab)) - Chimeric [NBP2-75189] - Flow-cytometry using anti-CD22 antibody Epratuzumab. Human lymphocytes were stained with an isotype control (panel A) or the rabbit-chimeric version of Epratuzumab (NBP2-75189, panel B) at a concentration of 1 ug/ml for 30 mins at RT. After washing, bound antibody was detected using a AF488 conjugated donkey anti-rabbit antibody and cells analysed on a FACSCanto flow-cytometer.



Flow Cytometry: Siglec-2/CD22 Antibody (hL22 (Epratuzumab)) - Chimeric [NBP2-75189] - Flow-cytometry using anti-CD22 antibody Epratuzumab. Cynomolgus monkey lymphocytes were stained with an isotype control (NBP2-52636, panel A) or the rabbit-chimeric version of Epratuzumab (NBP2-75189, panel B) at a concentration of 1 ug/ml for 30 mins at RT. After washing, bound antibody was detected using a AF488 conjugated donkey anti-rabbit antibody and cells analysed on a FACSCanto flow-cytometer.





### **Novus Biologicals USA**

10730 E. Briarwood Avenue  
Centennial, CO 80112  
USA  
Phone: 303.730.1950  
Toll Free: 1.888.506.6887  
Fax: 303.730.1966  
nb-customerservice@bio-techne.com

### **Bio-Techne Canada**

21 Canmotor Ave  
Toronto, ON M8Z 4E6  
Canada  
Phone: 905.827.6400  
Toll Free: 855.668.8722  
Fax: 905.827.6402  
canada.inquires@bio-techne.com

### **Bio-Techne Ltd**

19 Barton Lane  
Abingdon Science Park  
Abingdon, OX14 3NB, United Kingdom  
Phone: (44) (0) 1235 529449  
Free Phone: 0800 37 34 15  
Fax: (44) (0) 1235 533420  
info.EMEA@bio-techne.com

### **General Contact Information**

www.novusbio.com  
Technical Support: nb-technical@bio-techne.com  
Orders: nb-customerservice@bio-techne.com  
General: novus@novusbio.com

### **Products Related to NBP2-75189**

---

HAF008	Goat anti-Rabbit IgG Secondary Antibody [HRP]
NB7160	Goat anti-Rabbit IgG (H+L) Secondary Antibody [HRP]
NBP1-87041PEP	Siglec-2/CD22 Recombinant Protein Antigen
7268-CT-100	CTLA-4 [Unconjugated]

---

### **Limitations**

This product is for research use only and is not approved for use in humans or in clinical diagnosis. Primary Antibodies are guaranteed for 1 year from date of receipt.

For more information on our 100% guarantee, please visit [www.novusbio.com/guarantee](http://www.novusbio.com/guarantee)

Earn gift cards/discounts by submitting a review: [www.novusbio.com/reviews/submit/NBP2-75189](http://www.novusbio.com/reviews/submit/NBP2-75189)

Earn gift cards/discounts by submitting a publication using this product:  
[www.novusbio.com/publications](http://www.novusbio.com/publications)

