

Product Datasheet

Siglec-2/CD22 Antibody (hL22 (Epratuzumab)) - Azide and BSA Free **NBP2-75188**

Unit Size: 0.2 mg

Store at 4C for up to 3 months. For longer storage, aliquot and store at -20C.

www.novusbio.com



technical@novusbio.com

Protocols, Publications, Related Products, Reviews, Research Tools and Images at:
www.novusbio.com/NBP2-75188

Updated 4/19/2023 v.20.1

Earn rewards for product reviews and publications.

Submit a publication at www.novusbio.com/publications

Submit a review at www.novusbio.com/reviews/destination/NBP2-75188



NBP2-75188

Siglec-2/CD22 Antibody (hL22 (Epratuzumab)) - Azide and BSA Free

Product Information	
Unit Size	0.2 mg
Concentration	1 mg/ml
Storage	Store at 4C for up to 3 months. For longer storage, aliquot and store at -20C.
Clonality	Monoclonal
Clone	hL22 (Epratuzumab)
Preservative	0.02% Proclin 300
Isotype	IgG1 Kappa
Purity	Protein A purified
Buffer	PBS

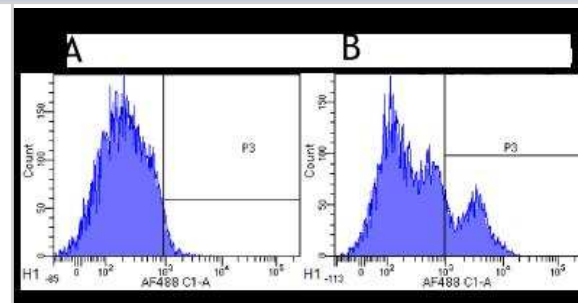
Product Description	
Host	Human
Gene ID	933
Gene Symbol	CD22
Species	Human, Cynomolgus Monkey, Rhesus Macaque
Specificity/Sensitivity	This antibody is specific for the 3rd Ig-like domain of human CD22 (epitope B), a cell surface glycoprotein present on mature B-cells and on many types of malignant B-cells.
Immunogen	This antibody was prepared by the humanization of LL2 (EPB-2), a murine anti-CD22 IgG2a raised against Raji Burkitt lymphoma cells. Murine sequences comprise 5-10% of the molecule, with the remainder being human framework sequences, which greatly reduces the potential for immunogenicity (Traczewski, 2010).

Product Application Details	
Applications	Flow Cytometry, Immunoprecipitation, Block/Neutralize
Recommended Dilutions	Flow Cytometry 1:10 - 1:1000, Immunoprecipitation 1:10 - 1:500, Block/Neutralize
Application Notes	Epratuzumab binds to the third extracellular domain of CD22, inducing CD22 phosphorylation, resulting in negative modulation of BCR activation, and rapid CD22 internalization, leading to modulation of B-cell homing (Traczewski, 2010). Initial phase II and two terminated early phase III studies suggest that the use of this antibody to treat systemic lupus erythematosus is effective and well tolerated, but both phase III trials failed to meet primary clinical efficacy endpoints. Additionally, in vitro studies and clinical trials indicate that this antibody can be used in combination therapy with another inhibitor of B-cell activity, rituximab (anti-CD20), in the treatment of non-Hodgkin lymphoma (Traczewski, 2010).

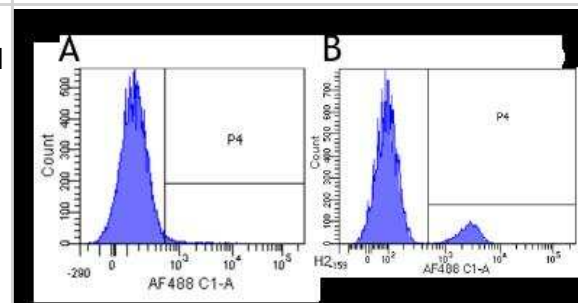


Images

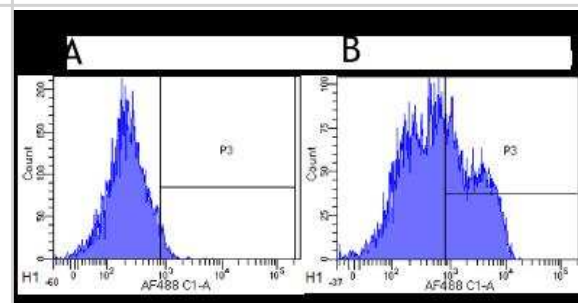
Flow Cytometry: Siglec-2/CD22 Antibody (hL22 (Epratuzumab)) [NBP2-75188] - Cynomolgus monkey lymphocytes were stained with an isotype control (panel A) or the rabbit-chimeric version of Epratuzumab (panel B). After washing, bound antibody was detected using a AF488 conjugated donkey anti-rabbit antibody and cells analysed on a FACSCanto flow-cytometer.



Flow Cytometry: Siglec-2/CD22 Antibody (hL22 (Epratuzumab)) [NBP2-75188] - Human lymphocytes were stained with an isotype control (panel A) or the rabbit-chimeric version of Epratuzumab (panel B). After washing, bound antibody was detected using a AF488 conjugated donkey anti-rabbit antibody and cells analysed on a FACSCanto flow-cytometer.



Flow Cytometry: Siglec-2/CD22 Antibody (hL22 (Epratuzumab)) [NBP2-75188] - Rhesus monkey lymphocytes were stained with an isotype control (panel A) or the rabbit-chimeric version of Epratuzumab (panel B). After washing, bound antibody was detected using a AF488 conjugated donkey anti-rabbit antibody and cells analysed on a FACSCanto flow-cytometer.





Novus Biologicals USA

10730 E. Briarwood Avenue
Centennial, CO 80112
USA
Phone: 303.730.1950
Toll Free: 1.888.506.6887
Fax: 303.730.1966
nb-customerservice@bio-techne.com

Bio-Techne Canada

21 Canmotor Ave
Toronto, ON M8Z 4E6
Canada
Phone: 905.827.6400
Toll Free: 855.668.8722
Fax: 905.827.6402
canada.inquires@bio-techne.com

Bio-Techne Ltd

19 Barton Lane
Abingdon Science Park
Abingdon, OX14 3NB, United Kingdom
Phone: (44) (0) 1235 529449
Free Phone: 0800 37 34 15
Fax: (44) (0) 1235 533420
info.EMEA@bio-techne.com

General Contact Information

www.novusbio.com
Technical Support: nb-technical@bio-techne.com
Orders: nb-customerservice@bio-techne.com
General: novus@novusbio.com

Products Related to NBP2-75188

G-101-C-ABS	Goat anti-Human IgG Secondary Antibody [Unconjugated]
NB7446	Goat anti-Human IgG Fc Secondary Antibody
NBP3-06872-0.1mg	Human IgG1 Kappa Isotype Control
NBP1-87041PEP	Siglec-2/CD22 Recombinant Protein Antigen

Limitations

This product is for research use only and is not approved for use in humans or in clinical diagnosis. Primary Antibodies are guaranteed for 1 year from date of receipt.

For more information on our 100% guarantee, please visit www.novusbio.com/guarantee

Earn gift cards/discounts by submitting a review: www.novusbio.com/reviews/submit/NBP2-75188

Earn gift cards/discounts by submitting a publication using this product:
www.novusbio.com/publications

