

Product Datasheet

PSMA/FOLH1/NAALADase I Antibody (OTI3H5) - Azide and BSA Free NBP2-73686

Unit Size: 100 ug

Store at -20C. Avoid freeze-thaw cycles.

www.novusbio.com



technical@novusbio.com

Protocols, Publications, Related Products, Reviews, Research Tools and Images at:
www.novusbio.com/NBP2-73686

Updated 9/9/2025 v.20.1

Earn rewards for product
reviews and publications.

Submit a publication at www.novusbio.com/publications

Submit a review at www.novusbio.com/reviews/destination/NBP2-73686



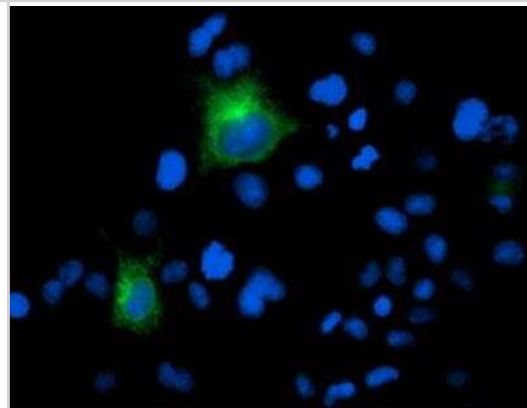
NBP2-73686**PSMA/FOLH1/NAALADase I Antibody (OTI3H5) - Azide and BSA Free**

Product Information	
Unit Size	100 ug
Concentration	LYOPH mg/ml
Storage	Store at -20C. Avoid freeze-thaw cycles.
Clonality	Monoclonal
Clone	OTI3H5
Preservative	No Preservative
Reconstitution Instructions	we recommend adding 100uL distilled water to a final antibody concentration of about 1 mg/mL. To use this carrier-free antibody for conjugation experiment, we strongly recommend performing another round of desalting process.
Isotype	IgG1
Purity	Immunogen affinity purified
Buffer	Lyophilized from PBS (pH 7.3) with 8% Trehalose
Target Molecular Weight	84.2 kDa
Product Description	
Description	Novus Biologicals Mouse PSMA/FOLH1/NAALADase I Antibody (OTI3H5) - Azide and BSA Free (NBP2-02045) is a monoclonal antibody validated for use in IHC, WB, Flow and ICC/IF. All Novus Biologicals antibodies are covered by our 100% guarantee.
Host	Mouse
Gene ID	2346
Gene Symbol	FOLH1
Species	Human, Mouse
Reactivity Notes	Please note that this antibody is reactive to Mouse and derived from the same host, Mouse. Mouse-On-Mouse blocking reagent may be needed for IHC and ICC experiments to reduce high background signal. You can find these reagents under catalog numbers PK-2200-NB and MP-2400-NB. Please contact Technical Support if you have any questions.
Immunogen	Full length human recombinant protein of human FOLH1(NP_004467) produced in HEK293T cell.
Product Application Details	
Applications	Western Blot, Immunohistochemistry-Paraffin, Flow Cytometry, Immunocytochemistry/ Immunofluorescence, Immunohistochemistry, CyTOF-ready
Recommended Dilutions	Western Blot 1:500-1000, Flow Cytometry 1:100, Immunohistochemistry 1:150, Immunocytochemistry/ Immunofluorescence 1:100, Immunohistochemistry-Paraffin 1:150, CyTOF-ready

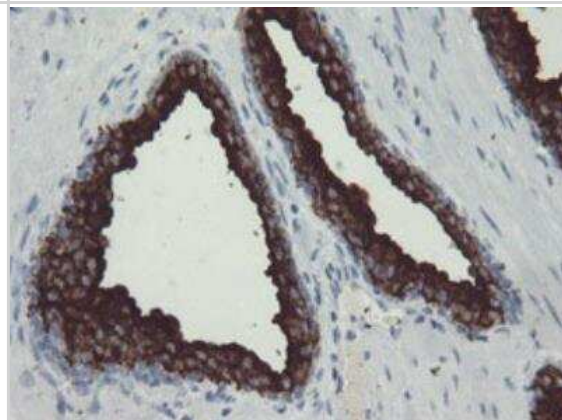


Images

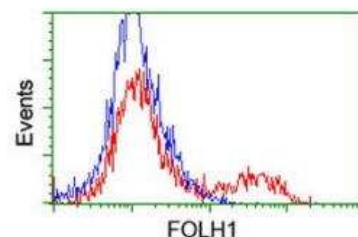
Immunocytochemistry/Immunofluorescence: PSMA/FOLH1/NAALADase I Antibody (OTI3H5) - Azide and BSA Free [NBP2-73686] - Staining of COS7 cells transiently transfected by pCMV6-ENTRY FOLH1.



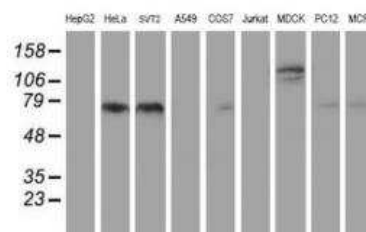
Immunohistochemistry-Paraffin: PSMA/FOLH1/NAALADase I Antibody (OTI3H5) - Azide and BSA Free [NBP2-73686] - Staining of paraffin-embedded Carcinoma of Human prostate tissue using anti-FOLH1 mouse monoclonal antibody. (Heat-induced epitope retrieval by 10mM citric buffer, pH6.0, 100 degrees C for 10min.



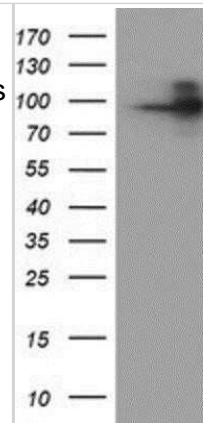
Flow Cytometry: PSMA/FOLH1/NAALADase I Antibody (OTI3H5) - Azide and BSA Free [NBP2-73686] - HEK293T cells transfected with either RC218310 overexpress plasmid (Red) or empty vector control plasmid (Blue) were immunostained by anti-FOLH1 antibody and then analyzed by flow cytometry.



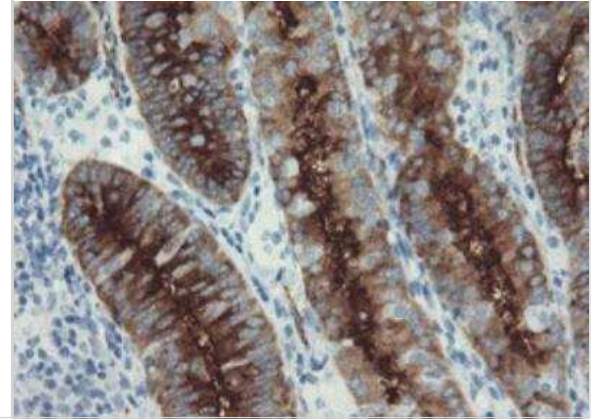
Western Blot: PSMA/FOLH1/NAALADase I Antibody (OTI3H5) - Azide and BSA Free [NBP2-73686] - Analysis of extracts (35ug) from 9 different cell lines by using anti-FOLH1 monoclonal antibody (HepG2: human; HeLa: human; SVT2: mouse; A549: human; COS7: monkey; Jurkat: human; MDCK: canine; PC12: rat; MCF7: human).



Western Blot: PSMA/FOLH1/NAALADase I Antibody (OTI3H5) - Azide and BSA Free [NBP2-73686] - Transfected with the pCMV6-ENTRY control (Left lane) or pCMV6-ENTRY PSMA (Right lane) cDNA for 48 hrs and lysed. Equivalent amounts of cell lysates (5 ug per lane) were separated by SDS-PAGE and immunoblotted with anti-PSMA.



Immunohistochemistry-Paraffin: PSMA/FOLH1/NAALADase I Antibody (OTI3H5) - Azide and BSA Free [NBP2-73686] - Staining of paraffin-embedded Adenocarcinoma of Human endometrium tissue using anti-FOLH1 mouse monoclonal antibody. (Heat-induced epitope retrieval by 10mM citric buffer, pH6.0, 100 degrees C for 10min.





Novus Biologicals USA

10730 E. Briarwood Avenue
Centennial, CO 80112
USA
Phone: 303.730.1950
Toll Free: 1.888.506.6887
Fax: 303.730.1966
nb-customerservice@bio-techne.com

Bio-Techne Canada

21 Canmotor Ave
Toronto, ON M8Z 4E6
Canada
Phone: 905.827.6400
Toll Free: 855.668.8722
Fax: 905.827.6402
canada.inquires@bio-techne.com

Bio-Techne Ltd

19 Barton Lane
Abingdon Science Park
Abingdon, OX14 3NB, United Kingdom
Phone: (44) (0) 1235 529449
Free Phone: 0800 37 34 15
Fax: (44) (0) 1235 533420
info.EMEA@bio-techne.com

General Contact Information

www.novusbio.com
Technical Support: nb-technical@bio-techne.com
Orders: nb-customerservice@bio-techne.com
General: novus@novusbio.com

Products Related to NBP2-73686

HAF007	Goat anti-Mouse IgG Secondary Antibody [HRP]
NB720-B	Rabbit anti-Mouse IgG (H+L) Secondary Antibody [Biotin]
NBP1-97005-0.5mg	Mouse IgG1 Isotype Control (MG1)
NBP3-12866-10ug	Recombinant Human PSMA/FOLH1/NAALADase I His Protein

Limitations

This product is for research use only and is not approved for use in humans or in clinical diagnosis. Primary Antibodies are guaranteed for 1 year from date of receipt.

For more information on our 100% guarantee, please visit www.novusbio.com/guarantee

Earn gift cards/discounts by submitting a review: www.novusbio.com/reviews/submit/NBP2-73686

Earn gift cards/discounts by submitting a publication using this product:
www.novusbio.com/publications

