

# Product Datasheet

## Notch-1 Antibody (OTI3E12) - Azide and BSA Free NBP2-73042

Unit Size: 100 ug

Store at -20C. Avoid freeze-thaw cycles.

[www.novusbio.com](http://www.novusbio.com)



[technical@novusbio.com](mailto:technical@novusbio.com)

Protocols, Publications, Related Products, Reviews, Research Tools and Images at:  
[www.novusbio.com/NBP2-73042](http://www.novusbio.com/NBP2-73042)

Updated 9/9/2025 v.20.1

Earn rewards for product  
reviews and publications.

Submit a publication at [www.novusbio.com/publications](http://www.novusbio.com/publications)

Submit a review at [www.novusbio.com/reviews/destination/NBP2-73042](http://www.novusbio.com/reviews/destination/NBP2-73042)



**NBP2-73042**

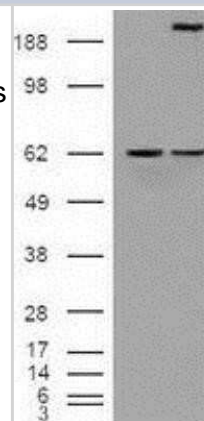
Notch-1 Antibody (OTI3E12) - Azide and BSA Free

Product Information	
Unit Size	100 ug
Concentration	LYOPH mg/ml
Storage	Store at -20C. Avoid freeze-thaw cycles.
Clonality	Monoclonal
Clone	OTI3E12
Preservative	No Preservative
Reconstitution Instructions	we recommend adding 100uL distilled water to a final antibody concentration of about 1 mg/mL. To use this carrier-free antibody for conjugation experiment, we strongly recommend performing another round of desalting process.
Isotype	IgG2b
Purity	Immunogen affinity purified
Buffer	Lyophilized from PBS (pH 7.3) with 8% Trehalose
Target Molecular Weight	270.6 kDa
Product Description	
Description	Novus Biologicals Mouse Notch-1 Antibody (OTI3E12) - Azide and BSA Free (NBP1-48289) is a monoclonal antibody validated for use in IHC, WB and ICC/IF. All Novus Biologicals antibodies are covered by our 100% guarantee.
Host	Mouse
Gene ID	4851
Gene Symbol	NOTCH1
Species	Human, Mouse, Rat
Reactivity Notes	Please note that this antibody is reactive to Mouse and derived from the same host, Mouse. Mouse-On-Mouse blocking reagent may be needed for IHC and ICC experiments to reduce high background signal. You can find these reagents under catalog numbers PK-2200-NB and MP-2400-NB. Please contact Technical Support if you have any questions.
Immunogen	Recombinant protein expressed in E.coli corresponding to amino acids 2300-2556 of human NOTCH1
Product Application Details	
Applications	Western Blot, Immunohistochemistry-Paraffin, Immunocytochemistry/Immunofluorescence, Immunohistochemistry, Reverse Phase Protein Array
Recommended Dilutions	Western Blot 1:1000, Immunohistochemistry 1:50RPPA 1:75, Immunocytochemistry/ Immunofluorescence 1:100, Immunohistochemistry-Paraffin, Reverse Phase Protein Array 1:75

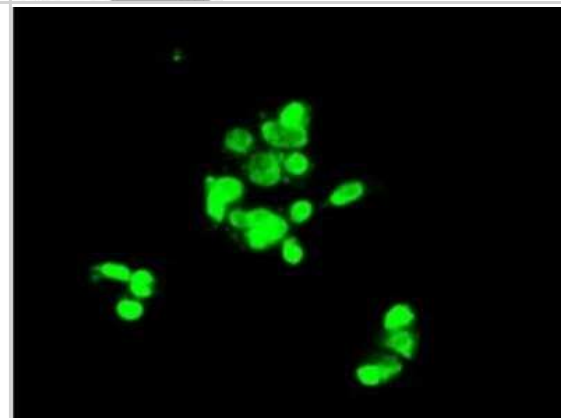


## Images

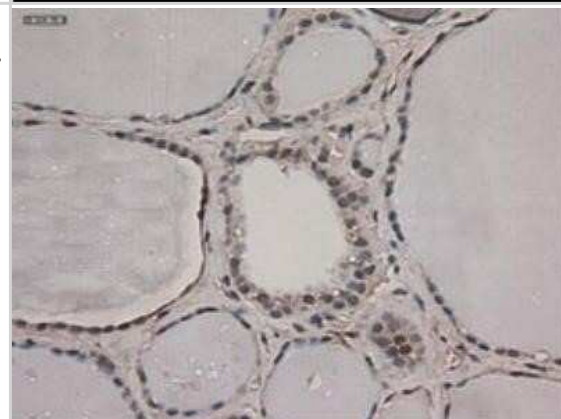
Western Blot: Notch-1 Antibody (OTI3E12) - Azide and BSA Free [NBP2-73042] - HEK293T cells were transfected with the pCMV6-ENTRY control (Left lane) or pCMV6-ENTRY Notch1(Right lane) cDNA for 48 hrs and lysed. Equivalent amounts of cell lysates (5 ug per lane) were separated by SDS-PAGE and immunoblotted with anti-Notch1.



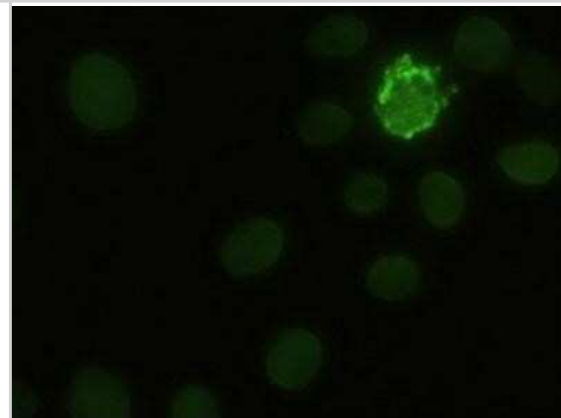
Immunocytochemistry/Immunofluorescence: Notch-1 Antibody (OTI3E12) - Azide and BSA Free [NBP2-73042] - Staining of HepG2 cells using anti Notch1 mouse monoclonal antibody.



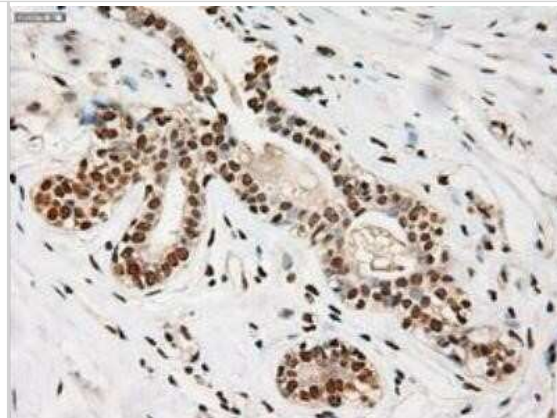
Immunohistochemistry: Notch-1 Antibody (OTI3E12) - Azide and BSA Free [NBP2-73042] - Staining of paraffin-embedded pancreas using anti-Notch1 mouse monoclonal antibody.



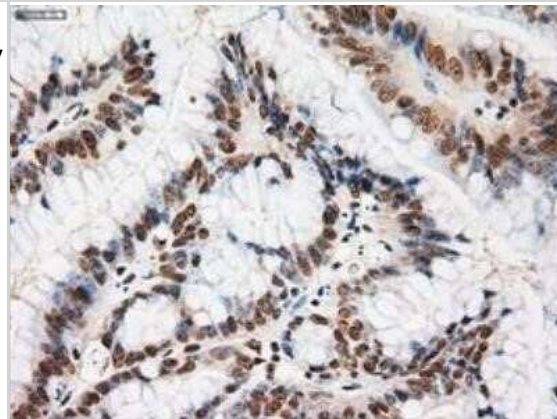
Immunocytochemistry/Immunofluorescence: Notch-1 Antibody (OTI3E12) - Azide and BSA Free [NBP2-73042] - Staining of HeLa cells transiently transfected by pCMV6-ENTRY Notch1.



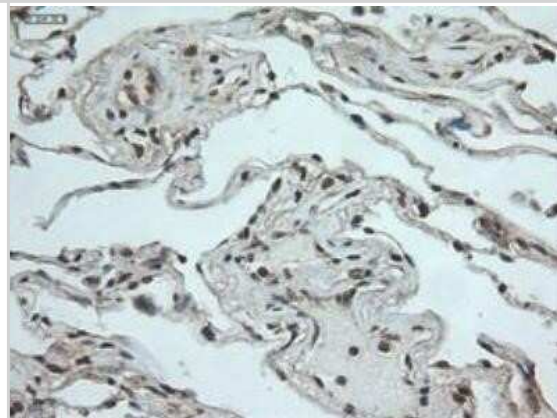
Immunohistochemistry: Notch-1 Antibody (OTI3E12) - Azide and BSA Free [NBP2-73042] - Staining of paraffin-embedded Adenocarcinoma of breast using anti-Notch1 mouse monoclonal antibody.



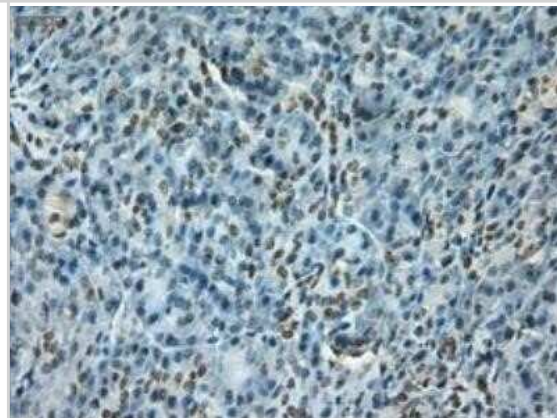
Immunohistochemistry: Notch-1 Antibody (OTI3E12) - Azide and BSA Free [NBP2-73042] - Staining of paraffin-embedded Carcinoma of kidney using anti-Notch1 mouse monoclonal antibody.



Immunohistochemistry: Notch-1 Antibody (OTI3E12) - Azide and BSA Free [NBP2-73042] - Staining of paraffin-embedded Carcinoma of thyroid using anti-Notch1 mouse monoclonal antibody.

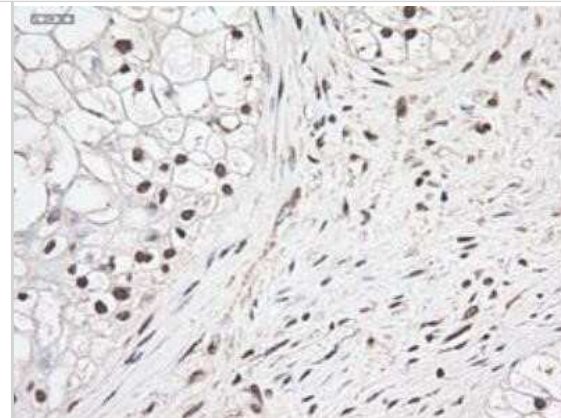


Immunohistochemistry: Notch-1 Antibody (OTI3E12) - Azide and BSA Free [NBP2-73042] - Staining of paraffin-embedded kidney using anti-Notch1 mouse monoclonal antibody.

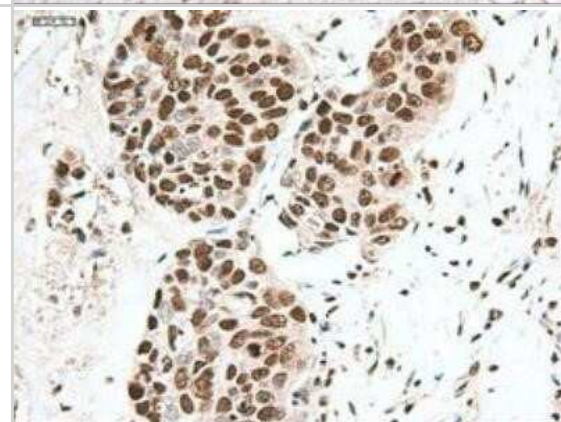




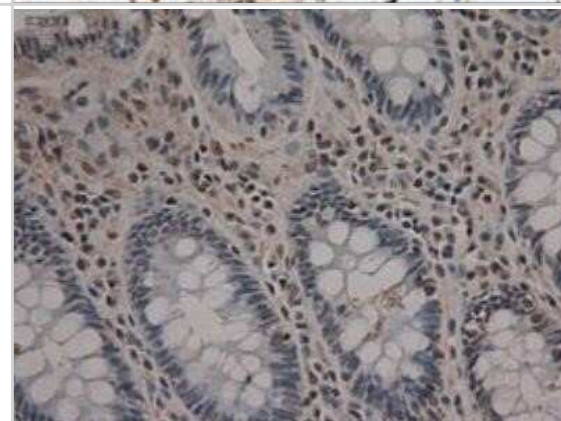
Immunohistochemistry: Notch-1 Antibody (OTI3E12) - Azide and BSA Free [NBP2-73042] - Staining of paraffin-embedded lung using anti-Notch1 mouse monoclonal antibody.



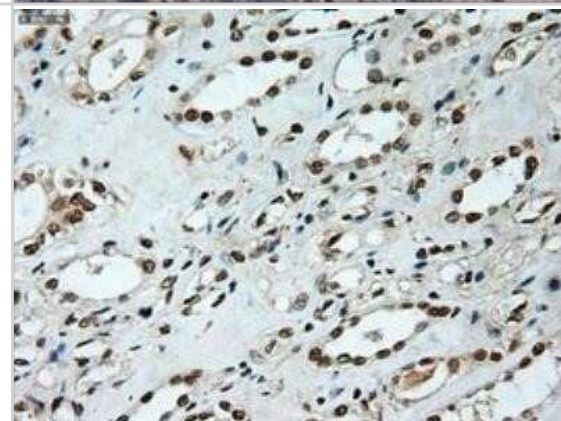
Immunohistochemistry: Notch-1 Antibody (OTI3E12) - Azide and BSA Free [NBP2-73042] - Staining of paraffin-embedded Adenocarcinoma of colon using anti-Notch1 mouse monoclonal antibody.



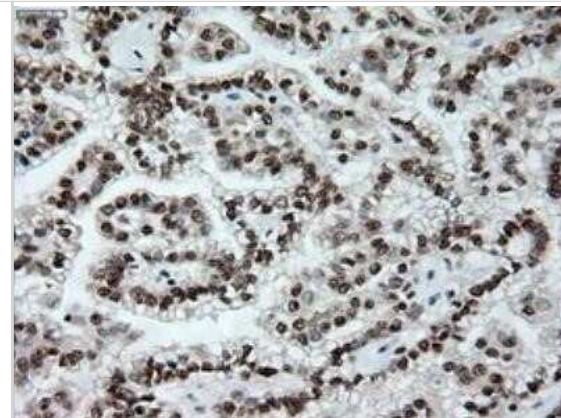
Immunohistochemistry: Notch-1 Antibody (OTI3E12) - Azide and BSA Free [NBP2-73042] - Staining of paraffin-embedded breast using anti-Notch1 mouse monoclonal antibody.



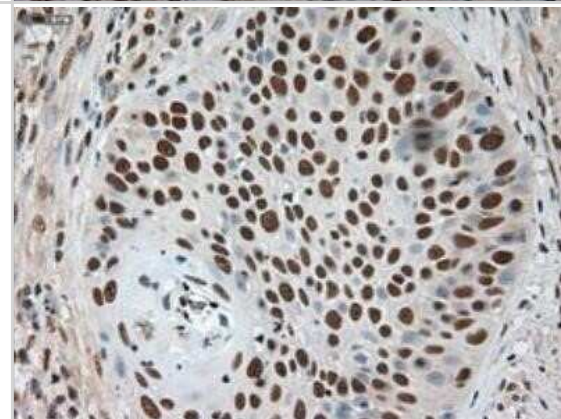
Immunohistochemistry: Notch-1 Antibody (OTI3E12) - Azide and BSA Free [NBP2-73042] - Staining of paraffin-embedded Carcinoma of lung using anti-Notch1 mouse monoclonal antibody.



Immunohistochemistry: Notch-1 Antibody (OTI3E12) - Azide and BSA Free [NBP2-73042] - Staining of paraffin-embedded Carcinoma of pancreas using anti-Notch1 mouse monoclonal antibody.



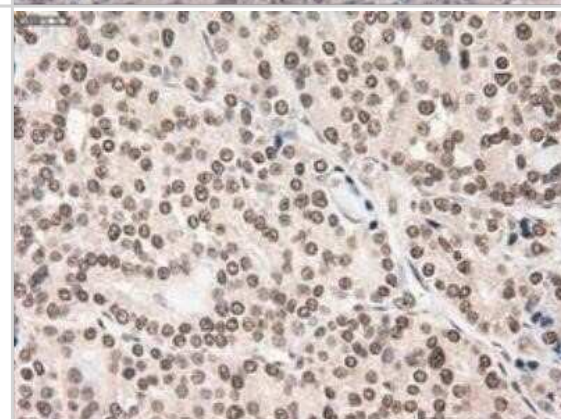
Immunohistochemistry: Notch-1 Antibody (OTI3E12) - Azide and BSA Free [NBP2-73042] - Staining of paraffin-embedded colon using anti-Notch1 mouse monoclonal antibody.



Immunohistochemistry: Notch-1 Antibody (OTI3E12) - Azide and BSA Free [NBP2-73042] - Staining of paraffin-embedded endometrium using anti-Notch1 mouse monoclonal antibody.



Immunohistochemistry: Notch-1 Antibody (OTI3E12) - Azide and BSA Free [NBP2-73042] - Staining of paraffin-embedded thyroid using anti-Notch1 mouse monoclonal antibody.





### **Novus Biologicals USA**

10730 E. Briarwood Avenue  
Centennial, CO 80112  
USA  
Phone: 303.730.1950  
Toll Free: 1.888.506.6887  
Fax: 303.730.1966  
nb-customerservice@bio-techne.com

### **Bio-Techne Canada**

21 Canmotor Ave  
Toronto, ON M8Z 4E6  
Canada  
Phone: 905.827.6400  
Toll Free: 855.668.8722  
Fax: 905.827.6402  
canada.inquires@bio-techne.com

### **Bio-Techne Ltd**

19 Barton Lane  
Abingdon Science Park  
Abingdon, OX14 3NB, United Kingdom  
Phone: (44) (0) 1235 529449  
Free Phone: 0800 37 34 15  
Fax: (44) (0) 1235 533420  
info.EMEA@bio-techne.com

### **General Contact Information**

[www.novusbio.com](http://www.novusbio.com)  
Technical Support: nb-technical@bio-techne.com  
Orders: nb-customerservice@bio-techne.com  
General: novus@novusbio.com

### **Products Related to NBP2-73042**

---

HAF007	Goat anti-Mouse IgG Secondary Antibody [HRP]
NB720-B	Rabbit anti-Mouse IgG (H+L) Secondary Antibody [Biotin]
NBP2-27231	Mouse IgG2b Isotype Control (MPC-11)
NBP1-78292PEP	Notch-1 Antibody Blocking Peptide

---

### **Limitations**

This product is for research use only and is not approved for use in humans or in clinical diagnosis. Primary Antibodies are guaranteed for 1 year from date of receipt.

For more information on our 100% guarantee, please visit [www.novusbio.com/guarantee](http://www.novusbio.com/guarantee)

Earn gift cards/discounts by submitting a review: [www.novusbio.com/reviews/submit/NBP2-73042](http://www.novusbio.com/reviews/submit/NBP2-73042)

Earn gift cards/discounts by submitting a publication using this product:  
[www.novusbio.com/publications](http://www.novusbio.com/publications)

