

Product Datasheet

CLE7 homolog Antibody (OTI2A4) - Azide and BSA Free NBP2-71940

Unit Size: 100 ug

Store at -20C. Avoid freeze-thaw cycles.

www.novusbio.com



technical@novusbio.com

Protocols, Publications, Related Products, Reviews, Research Tools and Images at:
www.novusbio.com/NBP2-71940

Updated 9/9/2025 v.20.1

Earn rewards for product
reviews and publications.

Submit a publication at www.novusbio.com/publications

Submit a review at www.novusbio.com/reviews/destination/NBP2-71940



NBP2-71940

CLE7 homolog Antibody (OTI2A4) - Azide and BSA Free

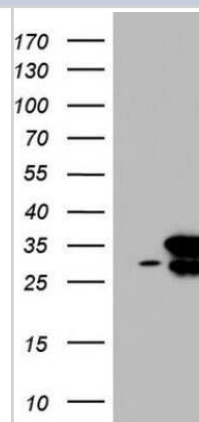
Product Information	
Unit Size	100 ug
Concentration	LYOPH mg/ml
Storage	Store at -20C. Avoid freeze-thaw cycles.
Clonality	Monoclonal
Clone	OTI2A4
Preservative	No Preservative
Reconstitution Instructions	we recommend adding 100uL distilled water to a final antibody concentration of about 1 mg/mL. To use this carrier-free antibody for conjugation experiment, we strongly recommend performing another round of desalting process.
Isotype	IgG1
Purity	Immunogen affinity purified
Buffer	Lyophilized from PBS (pH 7.3) with 8% Trehalose

Product Description	
Description	Novus Biologicals Mouse CLE7 homolog Antibody (OTI2A4) - Azide and BSA Free (NBP2-46591) is a monoclonal antibody validated for use in IHC and WB. All Novus Biologicals antibodies are covered by our 100% guarantee.
Host	Mouse
Gene ID	51637
Gene Symbol	RTRAF
Species	Human
Immunogen	Full length human recombinant protein of human C14orf166 (NP_057123) produced in E.coli.

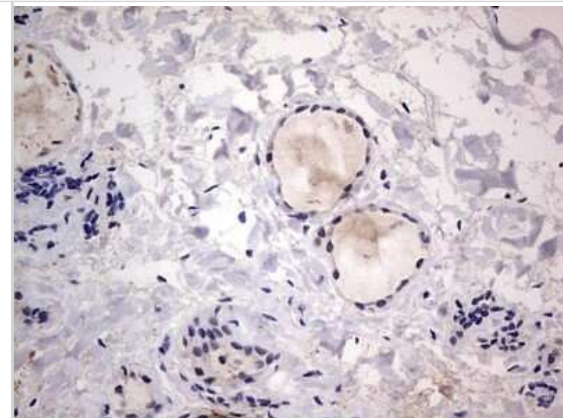
Product Application Details	
Applications	Western Blot, Immunohistochemistry-Paraffin, Immunohistochemistry
Recommended Dilutions	Western Blot 1:2000, Immunohistochemistry, Immunohistochemistry-Paraffin

Images

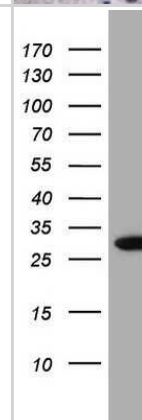
Western Blot: CLE7 homolog Antibody (OTI2A4) - Azide and BSA Free [NBP2-71940] - Analysis of HEK293T cells were transfected with the pCMV6-ENTRY control (Left lane) or pCMV6-ENTRY C14orf166.



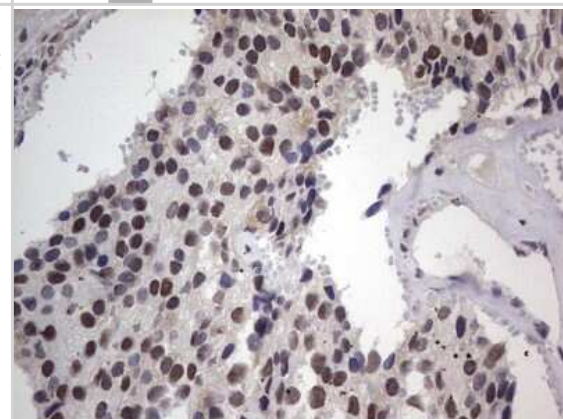
Immunohistochemistry: CLE7 homolog Antibody (OTI2A4) - Azide and BSA Free [NBP2-71940] - Analysis of Human thyroid tissue.



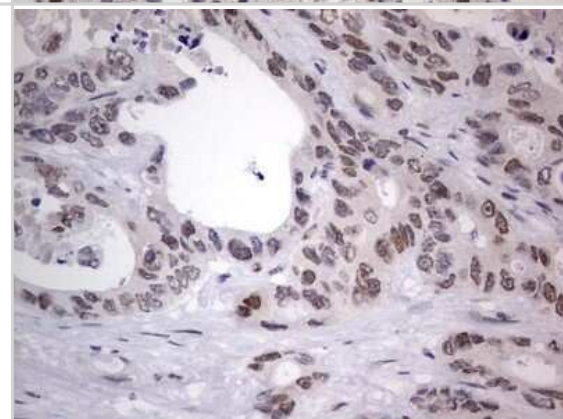
Western Blot: CLE7 homolog Antibody (OTI2A4) - Azide and BSA Free [NBP2-71940] - Analysis of A549 cell lysate (35ug).



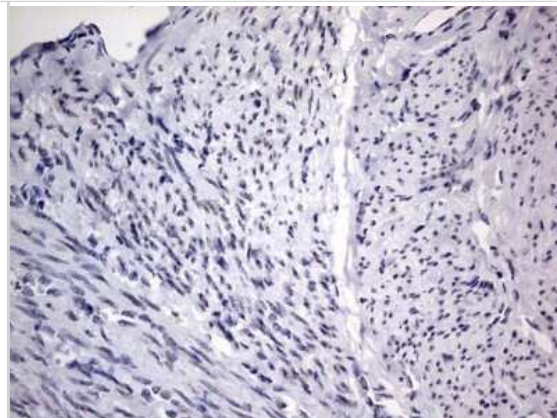
Immunohistochemistry: CLE7 homolog Antibody (OTI2A4) - Azide and BSA Free [NBP2-71940] - Analysis of Adenocarcinoma of Human breast tissue.



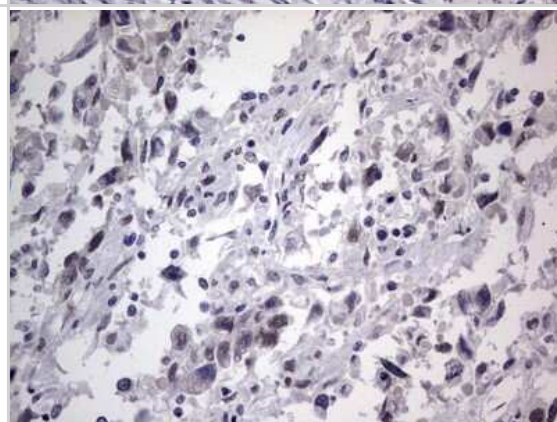
Immunohistochemistry: CLE7 homolog Antibody (OTI2A4) - Azide and BSA Free [NBP2-71940] - Analysis of Adenocarcinoma of Human colon tissue.



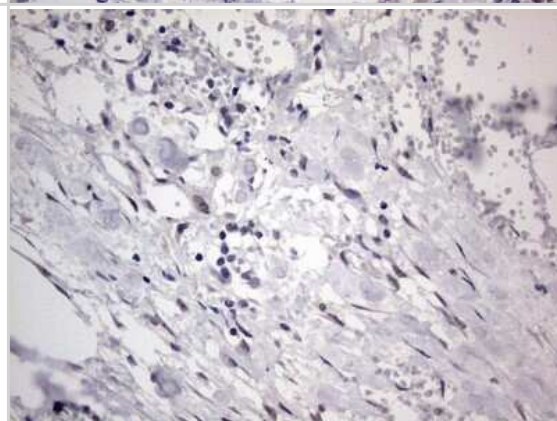
Immunohistochemistry: CLE7 homolog Antibody (OTI2A4) - Azide and BSA Free [NBP2-71940] - Analysis of Adenocarcinoma of Human endometrium tissue.



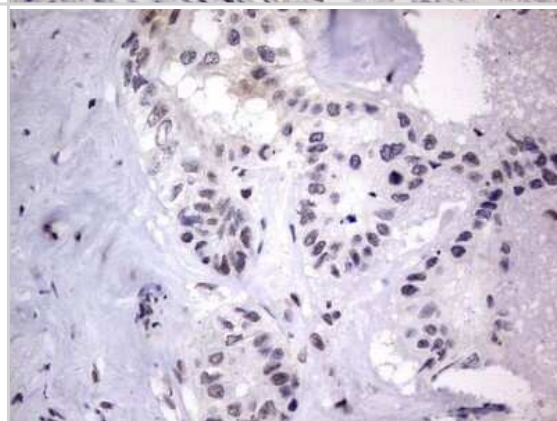
Immunohistochemistry: CLE7 homolog Antibody (OTI2A4) - Azide and BSA Free [NBP2-71940] - Analysis of Adenocarcinoma of Human ovary tissue.



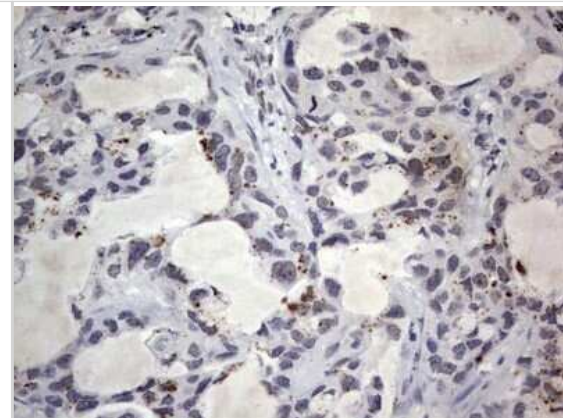
Immunohistochemistry: CLE7 homolog Antibody (OTI2A4) - Azide and BSA Free [NBP2-71940] - Analysis of Carcinoma of Human kidney tissue.



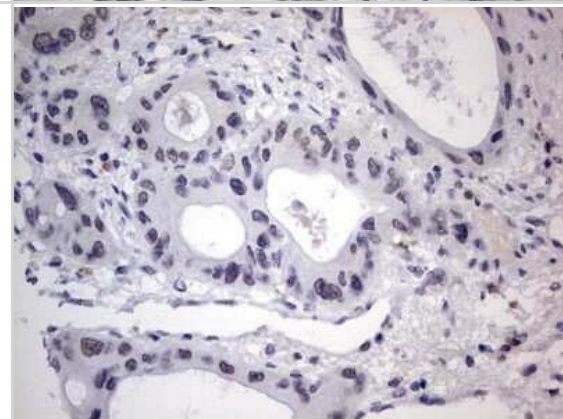
Immunohistochemistry: CLE7 homolog Antibody (OTI2A4) - Azide and BSA Free [NBP2-71940] - Analysis of Carcinoma of Human liver tissue.



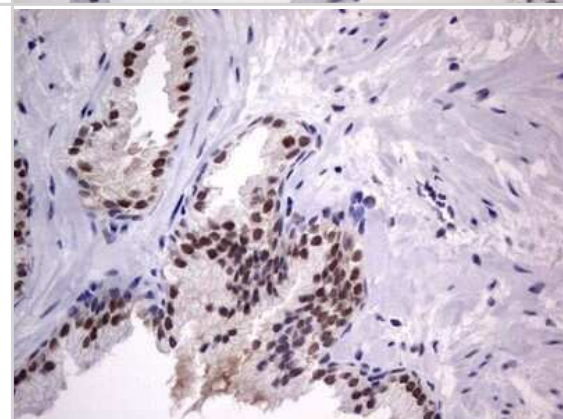
Immunohistochemistry: CLE7 homolog Antibody (OTI2A4) - Azide and BSA Free [NBP2-71940] - Analysis of Carcinoma of Human lung tissue.



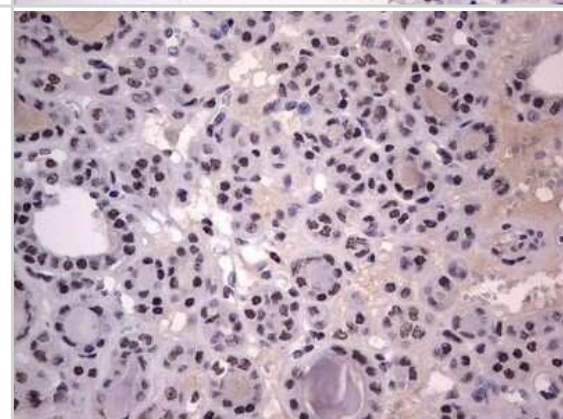
Immunohistochemistry: CLE7 homolog Antibody (OTI2A4) - Azide and BSA Free [NBP2-71940] - Analysis of Carcinoma of Human pancreas tissue.



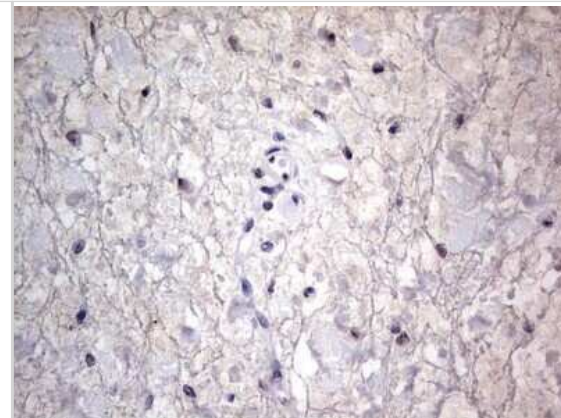
Immunohistochemistry: CLE7 homolog Antibody (OTI2A4) - Azide and BSA Free [NBP2-71940] - Analysis of Carcinoma of Human prostate tissue.



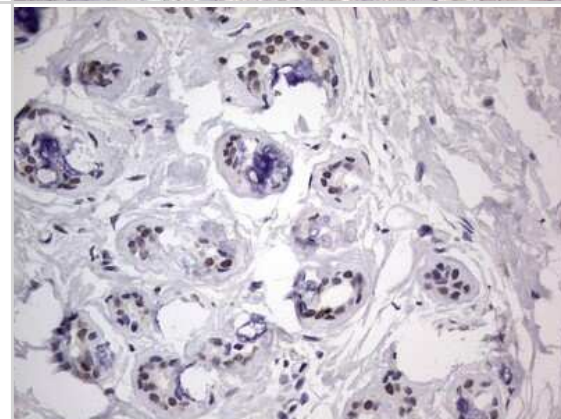
Immunohistochemistry: CLE7 homolog Antibody (OTI2A4) - Azide and BSA Free [NBP2-71940] - Analysis of Carcinoma of Human thyroid tissue.



Immunohistochemistry: CLE7 homolog Antibody (OTI2A4) - Azide and BSA Free [NBP2-71940] - Analysis of Human bladder tissue.



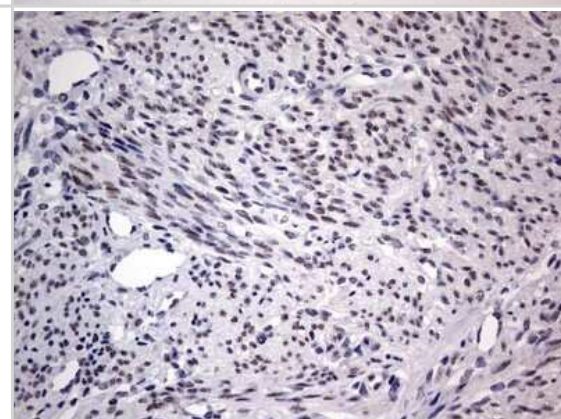
Immunohistochemistry: CLE7 homolog Antibody (OTI2A4) - Azide and BSA Free [NBP2-71940] - Analysis of Human breast tissue.



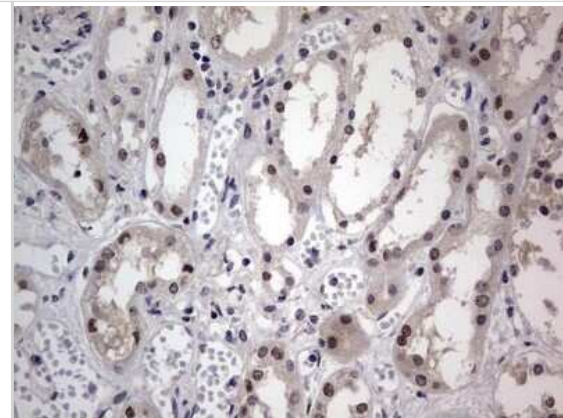
Immunohistochemistry: CLE7 homolog Antibody (OTI2A4) - Azide and BSA Free [NBP2-71940] - Analysis of Human colon tissue.



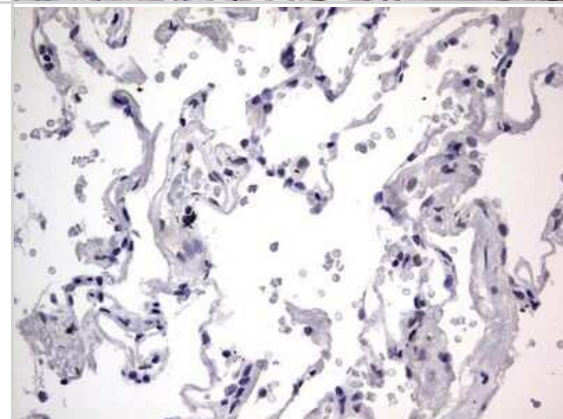
Immunohistochemistry: CLE7 homolog Antibody (OTI2A4) - Azide and BSA Free [NBP2-71940] - Analysis of Human endometrium tissue.



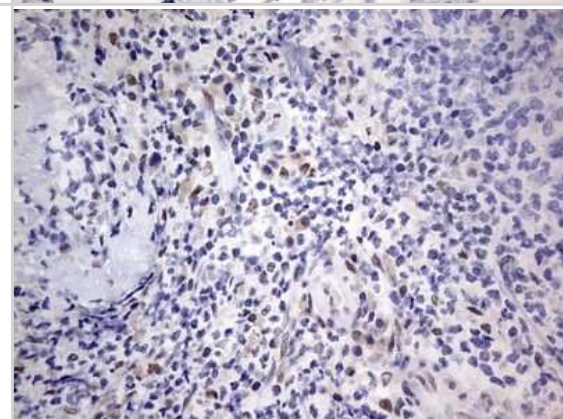
Immunohistochemistry: CLE7 homolog Antibody (OTI2A4) - Azide and BSA Free [NBP2-71940] - Analysis of Human Kidney tissue.



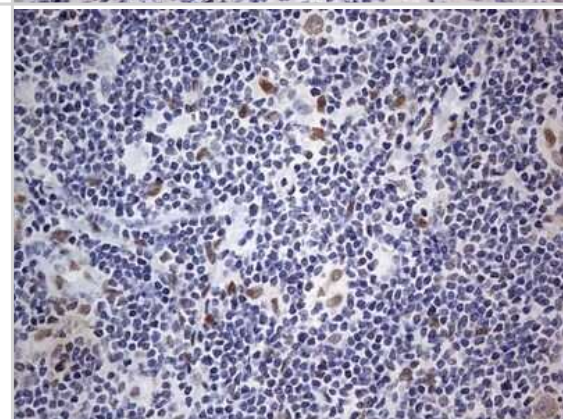
Immunohistochemistry: CLE7 homolog Antibody (OTI2A4) - Azide and BSA Free [NBP2-71940] - Analysis of Human lung tissue.



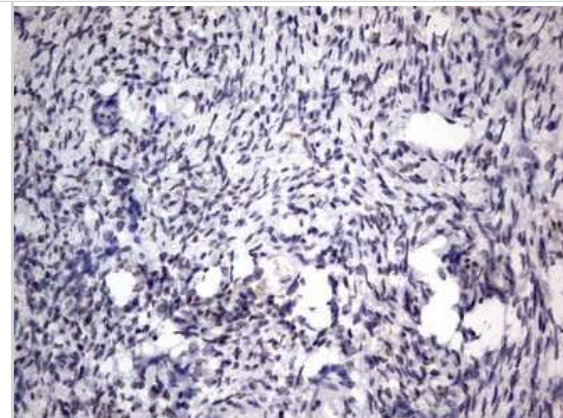
Immunohistochemistry: CLE7 homolog Antibody (OTI2A4) - Azide and BSA Free [NBP2-71940] - Analysis of Human lymph node tissue.



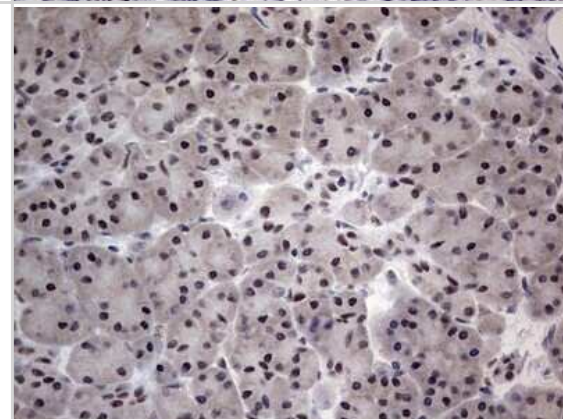
Immunohistochemistry: CLE7 homolog Antibody (OTI2A4) - Azide and BSA Free [NBP2-71940] - Analysis of Human lymphoma tissue.



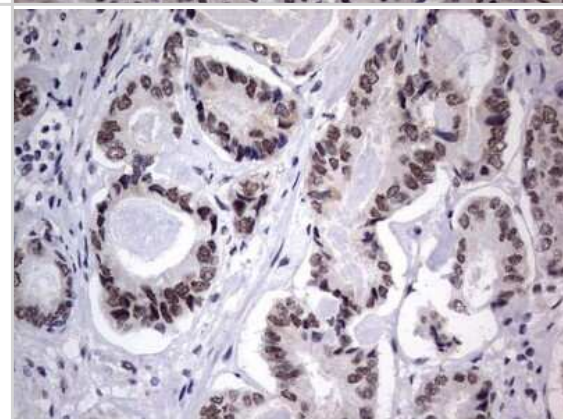
Immunohistochemistry: CLE7 homolog Antibody (OTI2A4) - Azide and BSA Free [NBP2-71940] - Analysis of Human Ovary tissue.



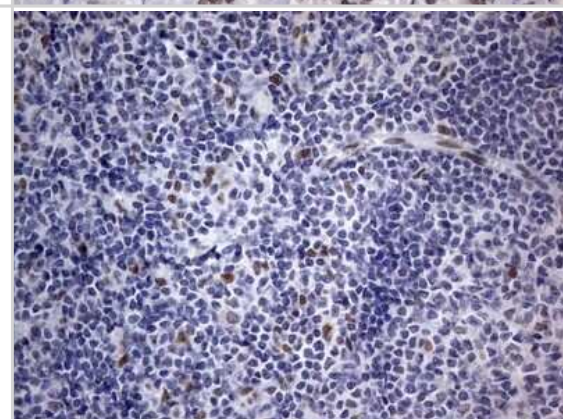
Immunohistochemistry: CLE7 homolog Antibody (OTI2A4) - Azide and BSA Free [NBP2-71940] - Analysis of Human pancreas tissue.



Immunohistochemistry: CLE7 homolog Antibody (OTI2A4) - Azide and BSA Free [NBP2-71940] - Analysis of Human prostate tissue.



Immunohistochemistry: CLE7 homolog Antibody (OTI2A4) - Azide and BSA Free [NBP2-71940] - Analysis of Human tonsil tissue.





Novus Biologicals USA

10730 E. Briarwood Avenue
Centennial, CO 80112
USA
Phone: 303.730.1950
Toll Free: 1.888.506.6887
Fax: 303.730.1966
nb-customerservice@bio-techne.com

Bio-Techne Canada

21 Canmotor Ave
Toronto, ON M8Z 4E6
Canada
Phone: 905.827.6400
Toll Free: 855.668.8722
Fax: 905.827.6402
canada.inquires@bio-techne.com

Bio-Techne Ltd

19 Barton Lane
Abingdon Science Park
Abingdon, OX14 3NB, United Kingdom
Phone: (44) (0) 1235 529449
Free Phone: 0800 37 34 15
Fax: (44) (0) 1235 533420
info.EMEA@bio-techne.com

General Contact Information

www.novusbio.com
Technical Support: nb-technical@bio-techne.com
Orders: nb-customerservice@bio-techne.com
General: novus@novusbio.com

Products Related to NBP2-71940

HAF007	Goat anti-Mouse IgG Secondary Antibody [HRP]
NB720-B	Rabbit anti-Mouse IgG (H+L) Secondary Antibody [Biotin]
NBP1-97005-0.5mg	Mouse IgG1 Isotype Control (MG1)
NBP1-84498PEP	CLE7 homolog Recombinant Protein Antigen

Limitations

This product is for research use only and is not approved for use in humans or in clinical diagnosis. Primary Antibodies are guaranteed for 1 year from date of receipt.

For more information on our 100% guarantee, please visit www.novusbio.com/guarantee

Earn gift cards/discounts by submitting a review: www.novusbio.com/reviews/submit/NBP2-71940

Earn gift cards/discounts by submitting a publication using this product:
www.novusbio.com/publications

