

Product Datasheet

Rat Apelin ELISA Kit (Colorimetric) NBP2-68236

Unit Size: 1 Kit

Storage of components varies. See protocol for specific instructions.

www.novusbio.com



technical@novusbio.com

Protocols, Publications, Related Products, Reviews, Research Tools and Images at:
www.novusbio.com/NBP2-68236

Updated 10/23/2024 v.20.1

Earn rewards for product
reviews and publications.

Submit a publication at www.novusbio.com/publications

Submit a review at www.novusbio.com/reviews/destination/NBP2-68236



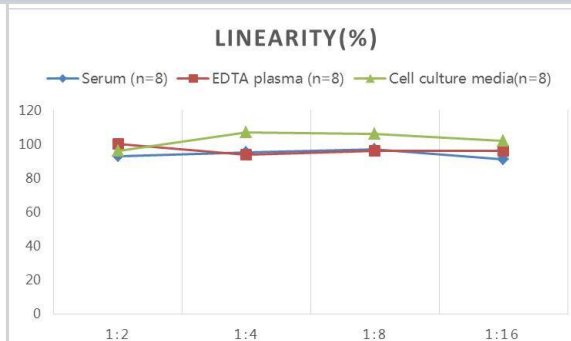
NBP2-68236**Rat Apelin ELISA Kit (Colorimetric)**

Product Information	
Unit Size	1 Kit
Concentration	Concentration is not relevant for this product. Please see the protocols for proper use of this product.
Storage	Storage of components varies. See protocol for specific instructions.
Product Description	
Gene ID	8862
Gene Symbol	APLN
Species	Rat
Specificity/Sensitivity	This kit recognizes Rat APLN in samples. No significant cross-reactivity or interference between Rat APLN and analogues was observed.
Kit Components	Micro ELISA Plate (Dismountable), Reference Standard, Concentrated Biotinylated Detection Ab (100x), Concentrated HRP Conjugate (100x), Sample Diluent, Biotinylated Detection Ab Diluent, HRP Conjugate Diluent, Concentrated Wash Buffer (25x), Substrate Reagent, Stop Solution, Plate Sealer, Product Manual
Standard Curve Range	78.13 - 5000 pg/mL
Sensitivity	46.88 pg/mL
Inter Assay	CV% < 4.93%
Intra Assay	CV% < 4.73
Assay Type	Competitive-ELISA
Spiking Recovery	84-109%
Suitable Sample Type	Serum, plasma and other biological fluids
Sample Volume	50 uL
Product Application Details	
Applications	ELISA
Recommended Dilutions	ELISA

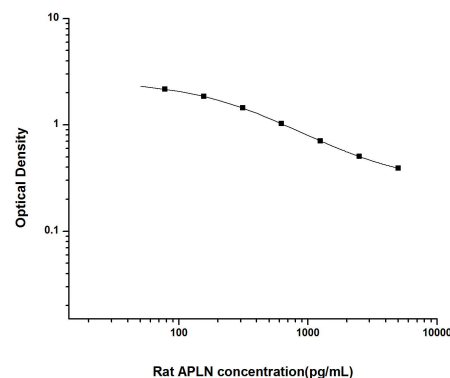


Images

ELISA: Rat Apelin ELISA Kit (Colorimetric) [NBP2-68236] - Samples were spiked with high concentrations of Rat Apelin and diluted with Reference Standard & Sample Diluent to produce samples with values within the range of the assay.



ELISA: Rat Apelin ELISA Kit (Colorimetric) [NBP2-68236] - Standard Curve Reference





Novus Biologicals USA

10730 E. Briarwood Avenue
Centennial, CO 80112
USA
Phone: 303.730.1950
Toll Free: 1.888.506.6887
Fax: 303.730.1966
nb-customerservice@bio-techne.com

Bio-Techne Canada

21 Canmotor Ave
Toronto, ON M8Z 4E6
Canada
Phone: 905.827.6400
Toll Free: 855.668.8722
Fax: 905.827.6402
canada.inquires@bio-techne.com

Bio-Techne Ltd

19 Barton Lane
Abingdon Science Park
Abingdon, OX14 3NB, United Kingdom
Phone: (44) (0) 1235 529449
Free Phone: 0800 37 34 15
Fax: (44) (0) 1235 533420
info.EMEA@bio-techne.com

General Contact Information

www.novusbio.com
Technical Support: nb-technical@bio-techne.com
Orders: nb-customerservice@bio-techne.com
General: novus@novusbio.com

Products Related to NBP2-68236

210-TA-005	TNF-alpha [Unconjugated]
NBP2-31176	Apelin Antibody
DVE00	VEGF [HRP]
M6000B-1	IL-6 [HRP]

Limitations

This product is for research use only and is not approved for use in humans or in clinical diagnosis. ELISA Kits are guaranteed for 6 months from date of receipt.

For more information on our 100% guarantee, please visit www.novusbio.com/guarantee

Earn gift cards/discounts by submitting a review: www.novusbio.com/reviews/submit/NBP2-68236

Earn gift cards/discounts by submitting a publication using this product:
www.novusbio.com/publications

