

Product Datasheet

EAAT2/GLT1 Antibody NBP2-68147

Unit Size: 0.1 ml

Store at -20C as supplied. After reconstitution, store at 2C to 8C for 1 month and at -20 for long term storage. Avoid repeated freeze-thaw cycles.

www.novusbio.com



technical@novusbio.com

Protocols, Publications, Related Products, Reviews, Research Tools and Images at:
www.novusbio.com/NBP2-68147

Updated 8/2/2020 v.20.1

Earn rewards for product
reviews and publications.

Submit a publication at www.novusbio.com/publications

Submit a review at www.novusbio.com/reviews/destination/NBP2-68147



NBP2-68147

EAAT2/GLT1 Antibody

Product Information	
Unit Size	0.1 ml
Concentration	Please see the vial label for concentration. If unlisted please contact technical services.
Storage	Store at -20C as supplied. After reconstitution, store at 2C to 8C for 1 month and at -20 for long term storage. Avoid repeated freeze-thaw cycles.
Clonality	Polyclonal
Preservative	No Preservative
Reconstitution Instructions	Reconstitute in 100 ul of sterile water. Centrifuge to remove any insoluble material. When reconstituting, glycerol (1:1) may be added for an additional stability. Avoid freeze and thaw cycles.
Isotype	IgG
Purity	Whole Antiserum

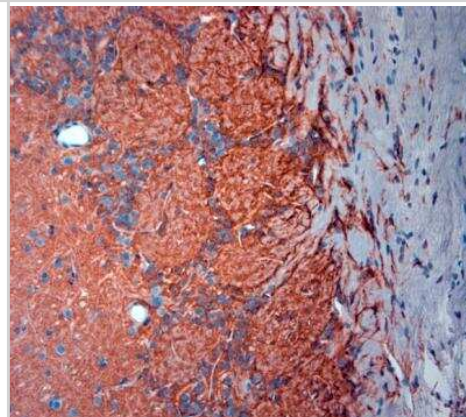
Product Description	
Host	Rabbit
Gene ID	6506
Gene Symbol	SLC1A2
Species	Human, Mouse, Rat
Immunogen	A synthetic peptide from extracellular domain of mouse Excitatory amino acid transporter 2 (EAAT2, EAA2) conjugated to an immunogenic carrier protein was used as the immunogen. The antigen is homologous in rat and human.

Product Application Details	
Applications	Western Blot, Flow Cytometry, Immunocytochemistry/Immunofluorescence, Immunohistochemistry, Immunohistochemistry-Paraffin, In vivo assay
Recommended Dilutions	Western Blot 1:300 - 1:2000, Flow Cytometry 1:10 - 1:1000, Immunohistochemistry, Immunocytochemistry/Immunofluorescence, Immunohistochemistry-Paraffin 1:100 - 1:1000, In vivo assay
Application Notes	Although not tested, this antibody may work in Immunohistochemistry-Frozen. Use in FLOW was reported in the scientific literature (PMID: 23793269). Use in In-vivo and in iCC/IF reported in scientific literature (PMID 25581361).

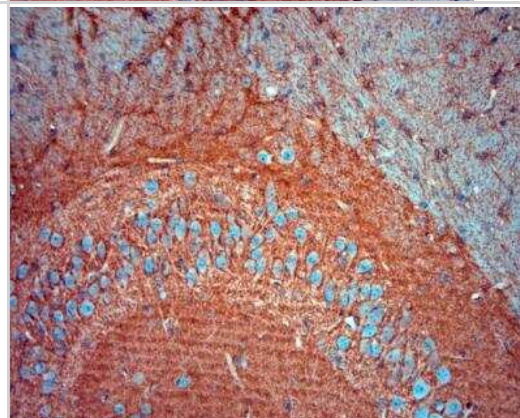


Images

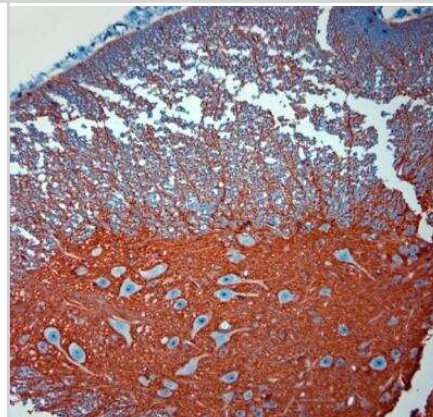
Immunohistochemistry-Paraffin: EAAT2/GLT1 Antibody [NBP2-68147] - Sections of mouse olfactory bulbs. Dilution 1:1000.



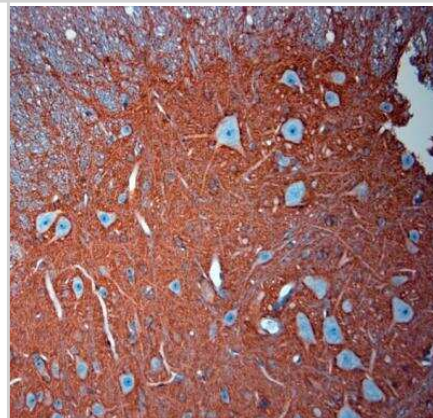
Immunohistochemistry-Paraffin: EAAT2/GLT1 Antibody [NBP2-68147] - Sections of mouse brain (hippocampus). Dilution 1: 1000.



Immunohistochemistry-Paraffin: EAAT2/GLT1 Antibody [NBP2-68147] - Sections of mouse spinal cord. Dilution 1:1000



Immunohistochemistry-Paraffin: EAAT2/GLT1 Antibody [NBP2-68147] - Sections of mouse spinal cord. Dilution 1:1000.





Novus Biologicals USA

10730 E. Briarwood Avenue
Centennial, CO 80112
USA
Phone: 303.730.1950
Toll Free: 1.888.506.6887
Fax: 303.730.1966
nb-customerservice@bio-techne.com

Bio-Techne Canada

21 Canmotor Ave
Toronto, ON M8Z 4E6
Canada
Phone: 905.827.6400
Toll Free: 855.668.8722
Fax: 905.827.6402
canada.inquires@bio-techne.com

Bio-Techne Ltd

19 Barton Lane
Abingdon Science Park
Abingdon, OX14 3NB, United Kingdom
Phone: (44) (0) 1235 529449
Free Phone: 0800 37 34 15
Fax: (44) (0) 1235 533420
info.EMEA@bio-techne.com

General Contact Information

www.novusbio.com
Technical Support: nb-technical@bio-techne.com
Orders: nb-customerservice@bio-techne.com
General: novus@novusbio.com

Limitations

This product is for research use only and is not approved for use in humans or in clinical diagnosis. Primary Antibodies are guaranteed for 1 year from date of receipt.

For more information on our 100% guarantee, please visit www.novusbio.com/guarantee

Earn gift cards/discounts by submitting a review: www.novusbio.com/reviews/submit/NBP2-68147

Earn gift cards/discounts by submitting a publication using this product:
www.novusbio.com/publications

