

Product Datasheet

Rat Dopamine D1R/DRD1 ELISA Kit (Chemiluminescence) NBP2-67934

Unit Size: 1 Kit

Storage of components varies. See protocol for specific instructions.

www.novusbio.com



technical@novusbio.com

Protocols, Publications, Related Products, Reviews, Research Tools and Images at:
www.novusbio.com/NBP2-67934

Updated 10/23/2024 v.20.1

Earn rewards for product
reviews and publications.

Submit a publication at www.novusbio.com/publications

Submit a review at www.novusbio.com/reviews/destination/NBP2-67934

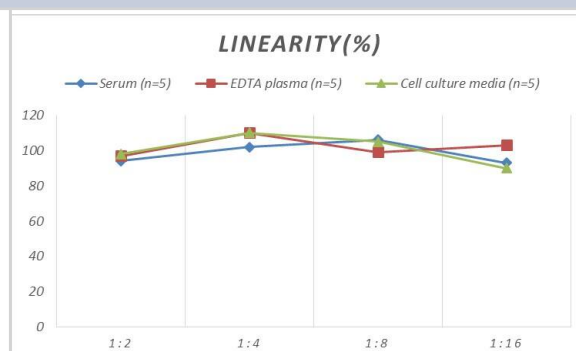


NBP2-67934**Rat Dopamine D1R/DRD1 ELISA Kit (Chemiluminescence)**

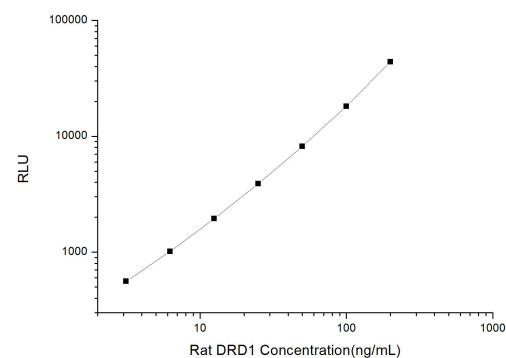
Product Information	
Unit Size	1 Kit
Concentration	Concentration is not relevant for this product. Please see the protocols for proper use of this product.
Storage	Storage of components varies. See protocol for specific instructions.
Product Description	
Gene ID	1812
Gene Symbol	DRD1
Species	Rat
Specificity/Sensitivity	This kit recognizes Rat DRD1 in samples. No significant cross-reactivity or interference between Rat DRD1 and analogues was observed.
Kit Components	Micro CLIA Plate (Dismountable), Reference Standard, Concentrated Biotinylated Detection Ab (100x), Concentrated HRP Conjugate (100x), Sample Diluent, Biotinylated Detection Ab Diluent, HRP Conjugate Diluent, Concentrated Wash Buffer (25x), Substrate Reagent A, Substrate Reagent B, Plate Sealer, Product Manual
Standard Curve Range	3.13-200 ng/mL
Sensitivity	1.88 ng/mL
Inter Assay	CV% < 8.42%
Intra Assay	CV% < 9.05%
Assay Type	Sandwich-CLIA
Spiking Recovery	88-109%
Suitable Sample Type	Serum, plasma and other biological fluids
Sample Volume	100 uL
Product Application Details	
Applications	ELISA
Recommended Dilutions	ELISA

Images

ELISA: Rat Dopamine D1R/DRD1 ELISA Kit (Chemiluminescence) [NBP2-67934] - Samples were spiked with high concentrations of Rat Dopamine D1R/DRD1 and diluted with Reference Standard & Sample Diluent to produce samples with values within the range of the assay.



ELISA: Rat Dopamine D1R/DRD1 ELISA Kit (Chemiluminescence) [NBP2-67934] - Standard Curve Reference





Novus Biologicals USA

10730 E. Briarwood Avenue
Centennial, CO 80112
USA
Phone: 303.730.1950
Toll Free: 1.888.506.6887
Fax: 303.730.1966
nb-customerservice@bio-techne.com

Bio-Techne Canada

21 Canmotor Ave
Toronto, ON M8Z 4E6
Canada
Phone: 905.827.6400
Toll Free: 855.668.8722
Fax: 905.827.6402
canada.inquires@bio-techne.com

Bio-Techne Ltd

19 Barton Lane
Abingdon Science Park
Abingdon, OX14 3NB, United Kingdom
Phone: (44) (0) 1235 529449
Free Phone: 0800 37 34 15
Fax: (44) (0) 1235 533420
info.EMEA@bio-techne.com

General Contact Information

www.novusbio.com
Technical Support: nb-technical@bio-
techne.com
Orders: nb-customerservice@bio-techne.com
General: novus@novusbio.com

Products Related to NBP2-67934

NBP3-17644PEP	Dopamine D1R/DRD1 Recombinant Protein Antigen
NB300-109	Tyrosine Hydroxylase Antibody
NB110-60017	Dopamine D1R/DRD1 Antibody (SG2-D1a)
NBP2-22203	ERK1 Antibody (1E5) - BSA Free

Limitations

This product is for research use only and is not approved for use in humans or in clinical diagnosis. ELISA Kits are guaranteed for 6 months from date of receipt.

For more information on our 100% guarantee, please visit www.novusbio.com/guarantee

Earn gift cards/discounts by submitting a review: www.novusbio.com/reviews/submit/NBP2-67934

Earn gift cards/discounts by submitting a publication using this product:
www.novusbio.com/publications

