

# Product Datasheet

## CDC37 Antibody (JJ087-06)

### NBP2-67839

Unit Size: 100 ul

Store at 4C short term. Aliquot and store at -20C long term. Avoid freeze-thaw cycles.

[www.novusbio.com](http://www.novusbio.com)



[technical@novusbio.com](mailto:technical@novusbio.com)

Protocols, Publications, Related Products, Reviews, Research Tools and Images at:  
[www.novusbio.com/NBP2-67839](http://www.novusbio.com/NBP2-67839)

Updated 1/3/2023 v.20.1

Earn rewards for product  
reviews and publications.

Submit a publication at [www.novusbio.com/publications](http://www.novusbio.com/publications)

Submit a review at [www.novusbio.com/reviews/destination/NBP2-67839](http://www.novusbio.com/reviews/destination/NBP2-67839)



**NBP2-67839**

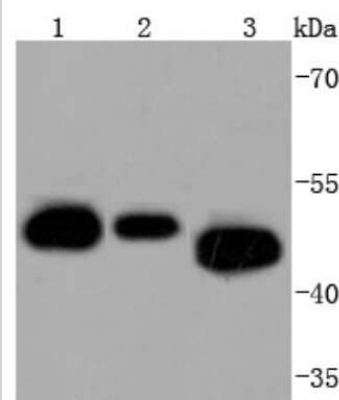
CDC37 Antibody (JJ087-06)

Product Information	
Unit Size	100 ul
Concentration	1 mg/ml
Storage	Store at 4C short term. Aliquot and store at -20C long term. Avoid freeze-thaw cycles.
Clonality	Monoclonal
Clone	JJ087-06
Preservative	0.05% Sodium Azide
Isotype	IgG
Purity	Protein A purified
Buffer	TBS (pH7.4), 0.05% BSA, 40% Glycerol
Product Description	
Host	Rabbit
Gene Symbol	CDC37
Species	Human, Mouse, Rat
Immunogen	Synthetic peptide within Human CDC37 aa 1-50 / 378. (SwissProt: Q16543 Human; SwissProt: Q61081 Mouse; SwissProt: Q63692 Rat)
Product Application Details	
Applications	Western Blot, Flow Cytometry, Immunohistochemistry, Immunohistochemistry-Paraffin, Immunoprecipitation
Recommended Dilutions	Western Blot 1:1000-1:5000, Flow Cytometry 1:50-1:100, Immunohistochemistry, Immunoprecipitation, Immunohistochemistry-Paraffin 1:50-1:200

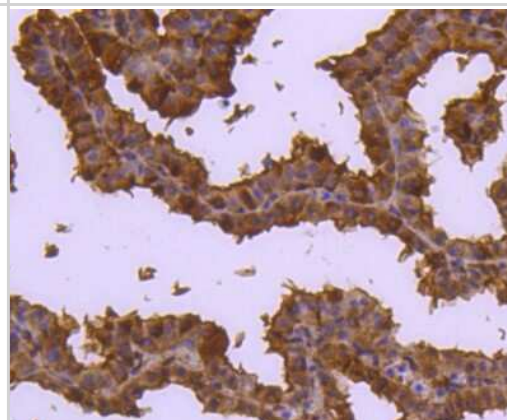


## Images

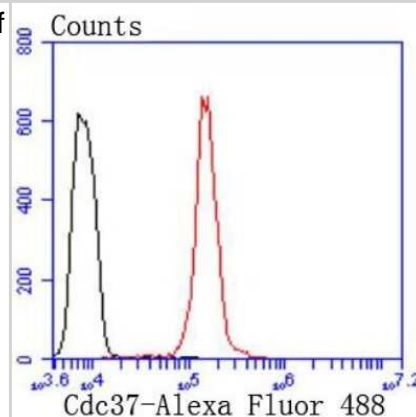
Western Blot: CDC37 Antibody (JJ087-06) [NBP2-67839] - Analysis of Cdc37 on different lysates using anti-Cdc37 antibody at 1/1,000 dilution. Positive control: Lane 1: Jurkat Lane 2: A431 Lane 3: K562



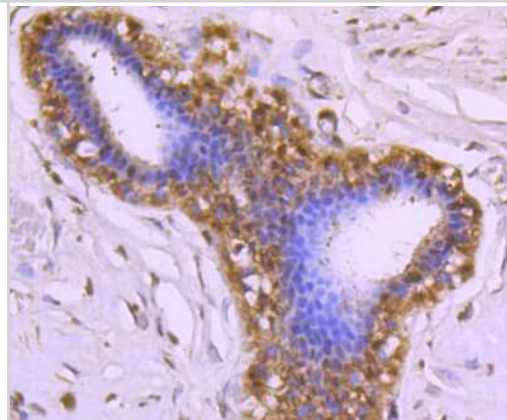
Immunohistochemistry-Paraffin: CDC37 Antibody (JJ087-06) [NBP2-67839] - Analysis of paraffin-embedded mouse placenta tissue using anti-Cdc37 antibody. Counter stained with hematoxylin.



Flow Cytometry: CDC37 Antibody (JJ087-06) [NBP2-67839] - Analysis of HeLa cells with Cdc37 antibody at 1/50 dilution (red) compared with an unlabelled control (cells without incubation with primary antibody; black). Alexa Fluor 488-conjugated goat anti rabbit IgG was used as the secondary antibody



Immunohistochemistry-Paraffin: CDC37 Antibody (JJ087-06) [NBP2-67839] - Analysis of paraffin-embedded mouse liver tissue using anti-Cdc37 antibody. Counter stained with hematoxylin.





### **Novus Biologicals USA**

10730 E. Briarwood Avenue  
Centennial, CO 80112  
USA  
Phone: 303.730.1950  
Toll Free: 1.888.506.6887  
Fax: 303.730.1966  
nb-customerservice@bio-techne.com

### **Bio-Techne Canada**

21 Canmotor Ave  
Toronto, ON M8Z 4E6  
Canada  
Phone: 905.827.6400  
Toll Free: 855.668.8722  
Fax: 905.827.6402  
canada.inquires@bio-techne.com

### **Bio-Techne Ltd**

19 Barton Lane  
Abingdon Science Park  
Abingdon, OX14 3NB, United Kingdom  
Phone: (44) (0) 1235 529449  
Free Phone: 0800 37 34 15  
Fax: (44) (0) 1235 533420  
info.EMEA@bio-techne.com

### **General Contact Information**

[www.novusbio.com](http://www.novusbio.com)  
Technical Support: [nb-technical@bio-techne.com](mailto:nb-technical@bio-techne.com)  
Orders: [nb-customerservice@bio-techne.com](mailto:nb-customerservice@bio-techne.com)  
General: [novus@novusbio.com](mailto:novus@novusbio.com)

### **Limitations**

This product is for research use only and is not approved for use in humans or in clinical diagnosis. Primary Antibodies are guaranteed for 1 year from date of receipt.

For more information on our 100% guarantee, please visit [www.novusbio.com/guarantee](http://www.novusbio.com/guarantee)

Earn gift cards/discounts by submitting a review: [www.novusbio.com/reviews/submit/NBP2-67839](http://www.novusbio.com/reviews/submit/NBP2-67839)

Earn gift cards/discounts by submitting a publication using this product:  
[www.novusbio.com/publications](http://www.novusbio.com/publications)

