

Product Datasheet

Cdc6 [p Ser54] Antibody (SD08-47) NBP2-67830

Unit Size: 100 ul

Store at 4C short term. Aliquot and store at -20C long term. Avoid freeze-thaw cycles.

www.novusbio.com



technical@novusbio.com

Protocols, Publications, Related Products, Reviews, Research Tools and Images at:
www.novusbio.com/NBP2-67830

Updated 1/3/2023 v.20.1

Earn rewards for product
reviews and publications.

Submit a publication at www.novusbio.com/publications

Submit a review at www.novusbio.com/reviews/destination/NBP2-67830



NBP2-67830

Cdc6 [p Ser54] Antibody (SD08-47)

Product Information	
Unit Size	100 ul
Concentration	1 mg/ml
Storage	Store at 4C short term. Aliquot and store at -20C long term. Avoid freeze-thaw cycles.
Clonality	Monoclonal
Clone	SD08-47
Preservative	0.05% Sodium Azide
Isotype	IgG
Purity	Protein A purified
Buffer	TBS (pH7.4), 0.05% BSA, 40% Glycerol

Product Description	
Host	Rabbit
Gene Symbol	CDC6
Species	Human
Immunogen	Synthetic phospho-peptide corresponding to residues surrounding Ser54 of Human Cdc6 aa 41-90 / 560. (SwissProt: Q99741 Human)

Product Application Details	
Applications	Western Blot, Immunocytochemistry/ Immunofluorescence
Recommended Dilutions	Western Blot 1:1000-1:2000, Immunocytochemistry/ Immunofluorescence 1:50-1:200

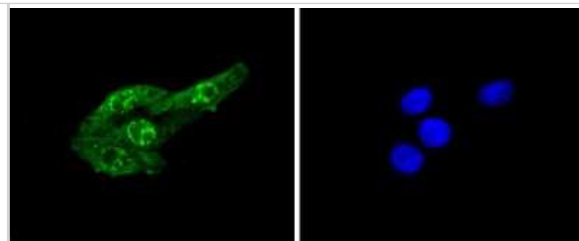
Images

Western Blot: Cdc6 [p Ser54] Antibody (SD08-47) [NBP2-67830] - Analysis of Cdc6 [p Ser54] on Hela cell lysates. Proteins were transferred to a PVDF membrane and blocked with 5% BSA in PBS for 1 hour at room temperature. The primary antibody (1/500) was used in 5% BSA at room temperature for 2 hours. Goat Anti-Rabbit IgG - HRP Secondary Antibody at 1:200,000 dilution was used for 1 hour at room temperature.

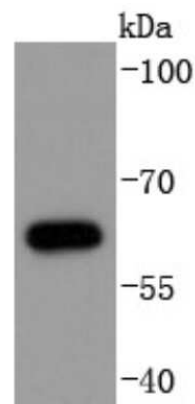
kDa
-170
-130
-100
-70
-55
-40
-35
-25



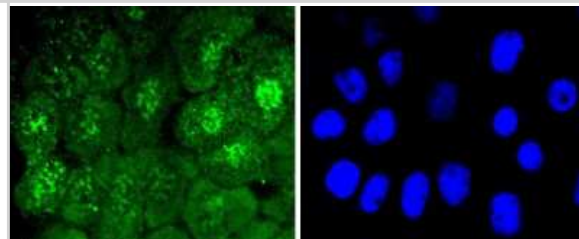
Immunocytochemistry/Immunofluorescence: Cdc6 [p Ser54] Antibody (SD08-47) [NBP2-67830] - Staining Phospho-Cdc6(S54) in HepG2 cells (green). The nuclear counter stain is DAPI (blue). Cells were fixed in paraformaldehyde, permeabilised with 0.25% Triton X100/PBS.



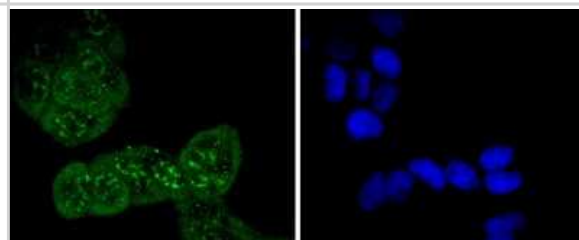
Western Blot: Cdc6 [p Ser54] Antibody (SD08-47) [NBP2-67830] - Analysis of Phospho-Cdc6(S54) on Jurkat cells lysates using anti-Phospho-Cdc6(S54) antibody at 1/1,000 dilution.



Immunocytochemistry/Immunofluorescence: Cdc6 [p Ser54] Antibody (SD08-47) [NBP2-67830] - Staining Phospho-Cdc6(S54) in A431 cells (green). The nuclear counter stain is DAPI (blue). Cells were fixed in paraformaldehyde, permeabilised with 0.25% Triton X100/PBS.



Immunocytochemistry/Immunofluorescence: Cdc6 [p Ser54] Antibody (SD08-47) [NBP2-67830] - Staining Phospho-Cdc6(S54) in Hela cells (green). The nuclear counter stain is DAPI (blue). Cells were fixed in paraformaldehyde, permeabilised with 0.25% Triton X100/PBS.





Novus Biologicals USA

10730 E. Briarwood Avenue
Centennial, CO 80112
USA
Phone: 303.730.1950
Toll Free: 1.888.506.6887
Fax: 303.730.1966
nb-customerservice@bio-techne.com

Bio-Techne Canada

21 Canmotor Ave
Toronto, ON M8Z 4E6
Canada
Phone: 905.827.6400
Toll Free: 855.668.8722
Fax: 905.827.6402
canada.inquires@bio-techne.com

Bio-Techne Ltd

19 Barton Lane
Abingdon Science Park
Abingdon, OX14 3NB, United Kingdom
Phone: (44) (0) 1235 529449
Free Phone: 0800 37 34 15
Fax: (44) (0) 1235 533420
info.EMEA@bio-techne.com

General Contact Information

www.novusbio.com
Technical Support: nb-technical@bio-techne.com
Orders: nb-customerservice@bio-techne.com
General: novus@novusbio.com

Limitations

This product is for research use only and is not approved for use in humans or in clinical diagnosis. Primary Antibodies are guaranteed for 1 year from date of receipt.

For more information on our 100% guarantee, please visit www.novusbio.com/guarantee

Earn gift cards/discounts by submitting a review: www.novusbio.com/reviews/submit/NBP2-67830

Earn gift cards/discounts by submitting a publication using this product:
www.novusbio.com/publications

