

Product Datasheet

AKT1 [p Thr450] Antibody (SD08-12) NBP2-67806

Unit Size: 100 ul

Store at 4C short term. Aliquot and store at -20C long term. Avoid freeze-thaw cycles.

www.novusbio.com



technical@novusbio.com

Protocols, Publications, Related Products, Reviews, Research Tools and Images at:
www.novusbio.com/NBP2-67806

Updated 1/3/2023 v.20.1

Earn rewards for product
reviews and publications.

Submit a publication at www.novusbio.com/publications

Submit a review at www.novusbio.com/reviews/destination/NBP2-67806



NBP2-67806

AKT1 [p Thr450] Antibody (SD08-12)

Product Information

Unit Size	100 ul
Concentration	1 mg/ml
Storage	Store at 4C short term. Aliquot and store at -20C long term. Avoid freeze-thaw cycles.
Clonality	Monoclonal
Clone	SD08-12
Preservative	0.05% Sodium Azide
Isotype	IgG
Purity	Protein A purified
Buffer	TBS (pH7.4), 0.05% BSA, 40% Glycerol
Target Molecular Weight	56 kDa

Product Description

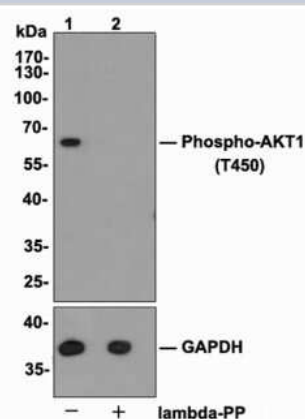
Host	Rabbit
Gene Symbol	AKT1
Species	Human, Mouse, Rat
Immunogen	Synthetic phospho-peptide corresponding to residues surrounding Thr450 of human AKT1. (SwissProt: P31749 Human; SwissProt: P31750 Mouse; SwissProt: P47196 Rat)

Product Application Details

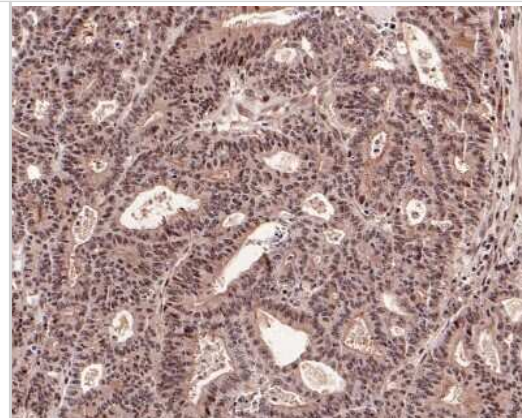
Applications	Western Blot, Immunohistochemistry, Immunohistochemistry-Paraffin, Immunoprecipitation
Recommended Dilutions	Western Blot 1:500-1:2000, Immunohistochemistry, Immunoprecipitation, Immunohistochemistry-Paraffin 1:50-1:100

Images

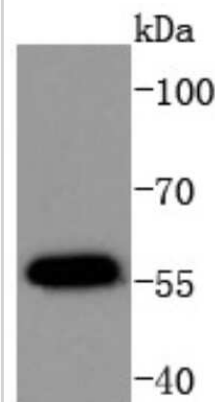
Western Blot: AKT1 [p Thr450] Antibody (SD08-12) [NBP2-67806] - Analysis of AKT1 [p Thr450] on MCF-7 cell lysates. Lane 1: MCF-7 cells, whole cell lysate, 10 ug/lane. Lane 2: MCF-7 cells treated with 2.8 ug/ul lambda-PP for 30 minutes, whole cell lysates, 10 ug/lane. Proteins were transferred to a PVDF membrane and blocked with 5% BSA in PBS for 1 hour at room temperature. The primary antibody Anti-AKT1 [p Thr450]antibody (1/1,000) , Anti-AKT1 antibody (1/5,000) and Anti-GAPDH antibody (1/10,000)was used in 5% BSA at room temperature for 2 hours. Goat Anti-Rabbit IgG H&L (HRP) Secondary Antibody at 1:200,000 dilution was used for 1 hour at room temperature. Predicted band size: 56 kDa Observed band size: 60 kDa Exposure time: 2 minutes



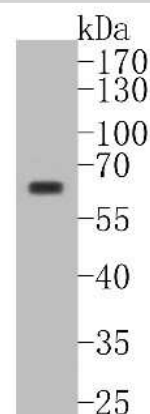
Immunohistochemistry-Paraffin: AKT1 [p Thr450] Antibody (SD08-12) [NBP2-67806] - Analysis of paraffin-embedded human breast carcinoma tissue using anti-Phospho-AKT1 [p Thr450] antibody. The section was pre-treated using heat mediated antigen retrieval with Tris-EDTA buffer (pH 8.0-8.4) for 20 minutes. The tissues were blocked in 5% BSA for 30 minutes at room temperature, washed with ddH₂O and PBS, and then probed with the primary antibody (1/50) for 30 minutes at room temperature. The detection was performed using an HRP conjugated compact polymer system. DAB was used as the chromogen. Tissues were counterstained with hematoxylin and mounted with DPX.



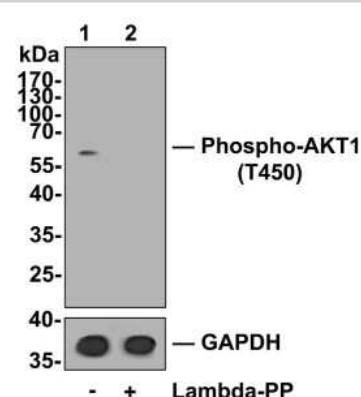
Western Blot: AKT1 [p Thr450] Antibody (SD08-12) [NBP2-67806] - WB analysis of Phospho-AKT1(Thr450) on MCF-7 cells lysates using anti-Phospho-AKT1(Thr450) antibody at 1:1000.



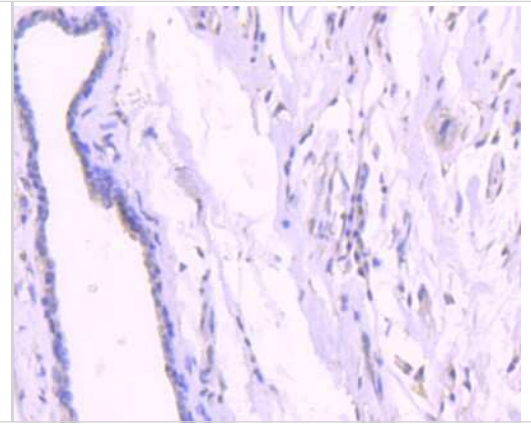
Western Blot: AKT1 [p Thr450] Antibody (SD08-12) [NBP2-67806] - Western blot analysis of AKT1 on MCF-7 cell lysates. Proteins were transferred to a PVDF membrane and blocked with 5% BSA in PBS for 1 hour at room temperature. The primary antibody (1/500) was used in 5% BSA at room temperature for 2 hours. Goat Anti-Rab



Western Blot: AKT1 [p Thr450] Antibody (SD08-12) [NBP2-67806] - Analysis of AKT1 [p Tyr450] on NIH-3T3 cell lysates. Lane 1: NIH-3T3 cells, whole cell lysate, 10ug/lane Lane 2: NIH-3T3 cells treated with 2.8ug/ul lambda-PP for 30 minutes, whole cell lysates, 10ug/lane All lanes : Anti-AKT1 [p Tyr450] antibody at 1:500 dilution. Anti-GAPDH antibody at 1:10,000 dilution. Goat Anti-Rabbit IgG H&L (HRP) at 1/200,000 dilution. Predicted band size: 56 kDa Observed band size: 60 kDa Blocking and diluting buffer: 5% BSA. Exposure time: 2 minutes



Immunohistochemistry-Paraffin: AKT1 [p Thr450] Antibody (SD08-12) [NBP2-67806] - IHC analysis of paraffin-embedded human breast carcinoma tissue using anti-Phospho-AKT1(Thr450) antibody. Counter-stained with hematoxylin.





Novus Biologicals USA

10730 E. Briarwood Avenue
Centennial, CO 80112
USA
Phone: 303.730.1950
Toll Free: 1.888.506.6887
Fax: 303.730.1966
nb-customerservice@bio-techne.com

Bio-Techne Canada

21 Canmotor Ave
Toronto, ON M8Z 4E6
Canada
Phone: 905.827.6400
Toll Free: 855.668.8722
Fax: 905.827.6402
canada.inquires@bio-techne.com

Bio-Techne Ltd

19 Barton Lane
Abingdon Science Park
Abingdon, OX14 3NB, United Kingdom
Phone: (44) (0) 1235 529449
Free Phone: 0800 37 34 15
Fax: (44) (0) 1235 533420
info.EMEA@bio-techne.com

General Contact Information

www.novusbio.com
Technical Support: nb-technical@bio-
techne.com
Orders: nb-customerservice@bio-techne.com
General: novus@novusbio.com

Limitations

This product is for research use only and is not approved for use in humans or in clinical diagnosis. Primary Antibodies are guaranteed for 1 year from date of receipt.

For more information on our 100% guarantee, please visit www.novusbio.com/guarantee

Earn gift cards/discounts by submitting a review: www.novusbio.com/reviews/submit/NBP2-67806

Earn gift cards/discounts by submitting a publication using this product:
www.novusbio.com/publications

