

Product Datasheet

SMC1 Antibody (SN20-27)

NBP2-67733

Unit Size: 100 ul

Store at 4C short term. Aliquot and store at -20C long term. Avoid freeze-thaw cycles.

www.novusbio.com



technical@novusbio.com

Publications: 1

Protocols, Publications, Related Products, Reviews, Research Tools and Images at:
www.novusbio.com/NBP2-67733

Updated 1/3/2023 v.20.1

Earn rewards for product
reviews and publications.

Submit a publication at www.novusbio.com/publications

Submit a review at www.novusbio.com/reviews/destination/NBP2-67733



NBP2-67733

SMC1 Antibody (SN20-27)

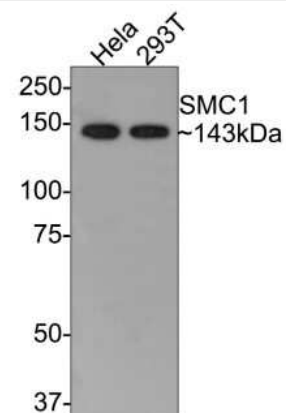
Product Information	
Unit Size	100 ul
Concentration	1 mg/ml
Storage	Store at 4C short term. Aliquot and store at -20C long term. Avoid freeze-thaw cycles.
Clonality	Monoclonal
Clone	SN20-27
Preservative	0.05% Sodium Azide
Isotype	IgG
Purity	Protein A purified
Buffer	TBS (pH7.4), 0.05% BSA, 40% Glycerol

Product Description	
Host	Rabbit
Gene Symbol	SMC1A
Species	Human, Mouse, Rat
Immunogen	Synthetic peptide within Human SMC1 aa 1,184-1,233 / 1,233. (SwissProt: Q14683 Human; SwissProt: Q8NDV3 Human; SwissProt: Q920F6 Mouse; SwissProt: Q9CU62 Mouse; SwissProt: Q9Z1M9 Rat)

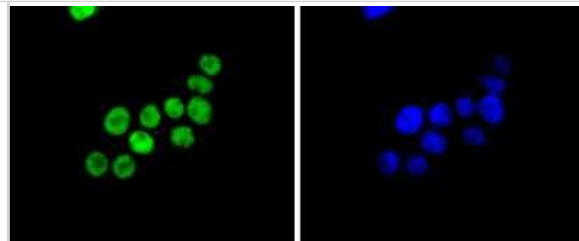
Product Application Details	
Applications	Western Blot, Immunocytochemistry/ Immunofluorescence, Immunohistochemistry, Immunohistochemistry-Paraffin
Recommended Dilutions	Western Blot 1:500-1:2000, Immunohistochemistry, Immunocytochemistry/ Immunofluorescence 1:100-1:500, Immunohistochemistry-Paraffin 1:100-1:400

Images

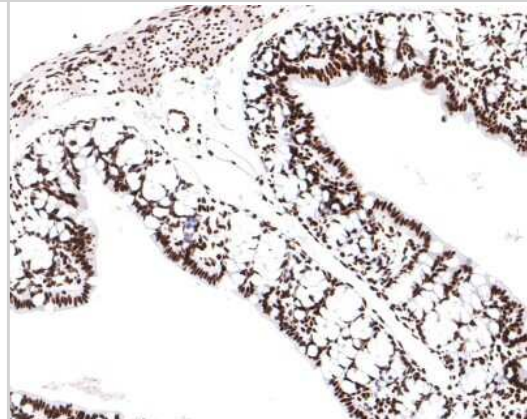
Western Blot: SMC1 Antibody (SN20-27) [NBP2-67733] - Analysis of SMC1 on different lysates with Rabbit anti-SMC1 antibody at 1/500 dilution. Lane 1: HeLa cell lysate Lane 2: 293T cell lysate
Lysates/proteins at 10 ug/Lane. Predicted band size: 143 kDa Observed band size: 143 kDa Exposure time: 30 seconds; 8% SDS-PAGE gel. Proteins were transferred to a PVDF membrane and blocked with 5% NFDM/TBST for 1 hour at room temperature. The primary antibody at 1/500 dilution was used in 5% NFDM/TBST at room temperature for 2 hours. Goat Anti-Rabbit IgG - HRP Secondary Antibody at 1:300,000 dilution was used for 1 hour at room temperature.



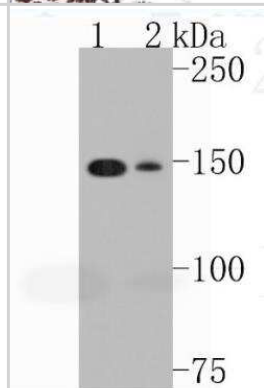
Immunocytochemistry/Immunofluorescence: SMC1 Antibody (SN20-27) [NBP2-67733] - Staining SMC1 in SW480 cells (green). The nuclear counter stain is DAPI (blue). Cells were fixed in paraformaldehyde, permeabilised with 0.25% Triton X100/PBS.



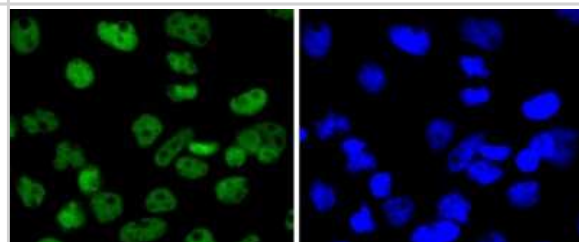
Immunohistochemistry-Paraffin: SMC1 Antibody (SN20-27) [NBP2-67733] - Analysis of paraffin-embedded rat large intestine tissue with Rabbit anti-SMC1 antibody washed with ddH₂O and PBS, and then probed with the primary antibody at 1/400 dilution for 1 hour at room temperature. The detection was performed using an HRP conjugated compact polymer system. DAB was used as the chromogen. Tissues were counterstained with hematoxylin and mounted with DPX.



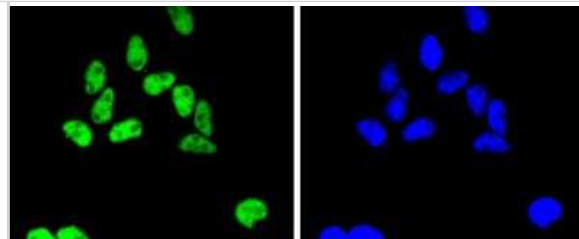
Western Blot: SMC1 Antibody (SN20-27) [NBP2-67733] - Analysis of SMC1 on different lysates. Proteins were transferred to a PVDF membrane and blocked with 5% BSA in PBS for 1 hour at room temperature. The primary antibody (1/500) was used in 5% BSA at room temperature for 2 hours. Goat Anti-Rabbit IgG - HRP Secondary Antibody at 1:5,000 dilution was used for 1 hour at room temperature. Positive control: Lane 1: 293T cell lysate Lane 2: Hela cell lysate



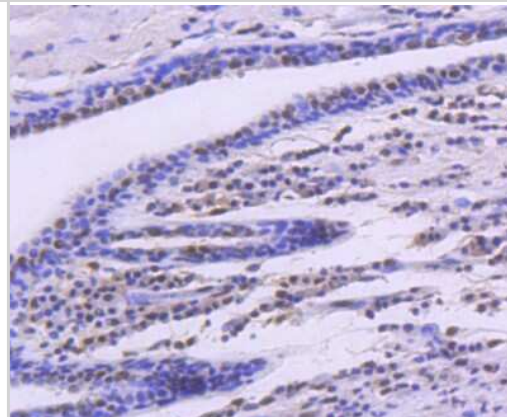
Immunocytochemistry/Immunofluorescence: SMC1 Antibody (SN20-27) [NBP2-67733] - Staining SMC1 in A431 cells (green). The nuclear counter stain is DAPI (blue). Cells were fixed in paraformaldehyde, permeabilised with 0.25% Triton X100/PBS.



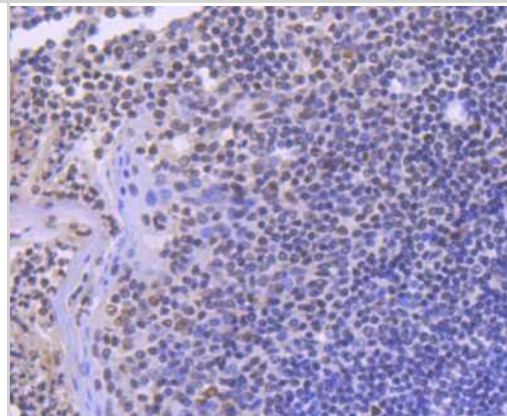
Immunocytochemistry/Immunofluorescence: SMC1 Antibody (SN20-27) [NBP2-67733] - Staining SMC1 in Hela cells (green). The nuclear counter stain is DAPI (blue). Cells were fixed in paraformaldehyde, permeabilised with 0.25% Triton X100/PBS.



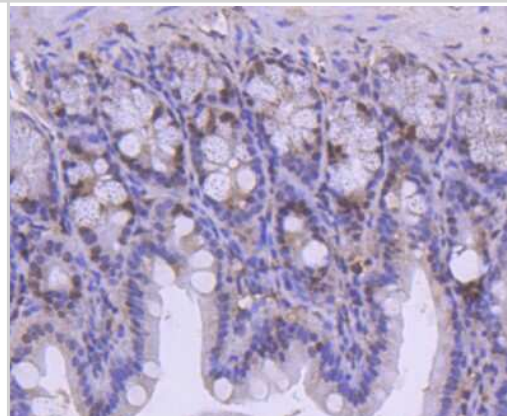
Immunohistochemistry-Paraffin: SMC1 Antibody (SN20-27) [NBP2-67733] - Analysis of paraffin-embedded human breast carcinoma tissue using anti-SMC1 antibody. Counter stained with hematoxylin.



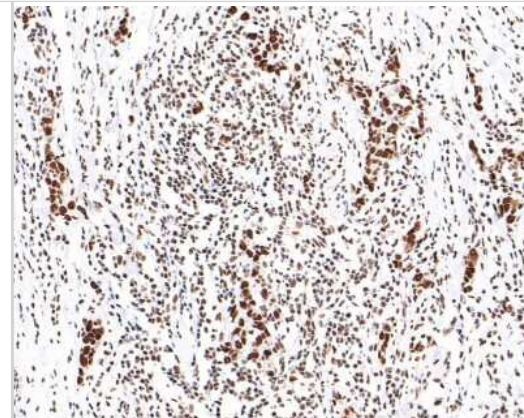
Immunohistochemistry-Paraffin: SMC1 Antibody (SN20-27) [NBP2-67733] - Analysis of paraffin-embedded human tonsil tissue using anti-SMC1 antibody. Counter stained with hematoxylin.



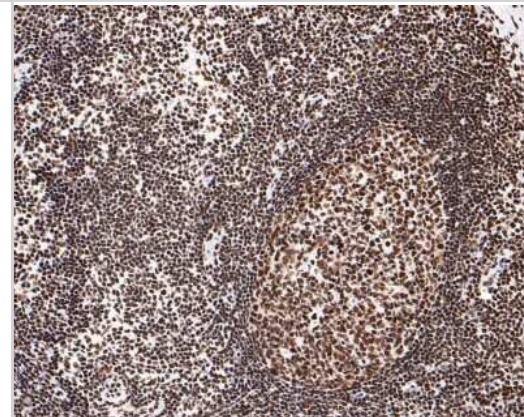
Immunohistochemistry-Paraffin: SMC1 Antibody (SN20-27) [NBP2-67733] - Analysis of paraffin-embedded mouse colon tissue using anti-SMC1 antibody. Counter stained with hematoxylin.



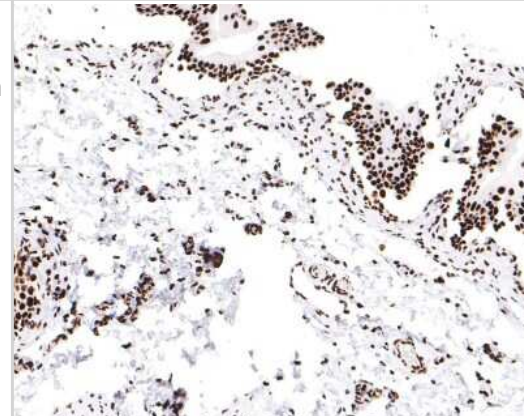
Immunohistochemistry-Paraffin: SMC1 Antibody (SN20-27) [NBP2-67733] - Analysis of paraffin-embedded human breast carcinoma tissue with Rabbit anti-SMC1 antibody washed with ddH₂O and PBS, and then probed with the primary antibody at 1/400 dilution for 1 hour at room temperature. The detection was performed using an HRP conjugated compact polymer system. DAB was used as the chromogen. Tissues were counterstained with hematoxylin and mounted with DPX.



Immunohistochemistry-Paraffin: SMC1 Antibody (SN20-27) [NBP2-67733] - Analysis of paraffin-embedded human lymph nodes tissue with Rabbit anti-SMC1 antibody washed with ddH₂O and PBS, and then probed with the primary antibody at 1/400 dilution for 1 hour at room temperature. The detection was performed using an HRP conjugated compact polymer system. DAB was used as the chromogen. Tissues were counterstained with hematoxylin and mounted with DPX.



Immunohistochemistry-Paraffin: SMC1 Antibody (SN20-27) [NBP2-67733] - Analysis of paraffin-embedded rat bladder tissue with Rabbit anti-SMC1 antibody washed with ddH₂O and PBS, and then probed with the primary antibody at 1/100 dilution for 1 hour at room temperature. The detection was performed using an HRP conjugated compact polymer system. DAB was used as the chromogen. Tissues were counterstained with hematoxylin and mounted with DPX.



Publications

Ochs, F, Karemore, G Et al. Stabilization of chromatin topology safeguards genome integrity. Nature 2019-10-01 [PMID: 31645724] (ICC/IF, Drosophila melanogaster)



Novus Biologicals USA

10730 E. Briarwood Avenue
Centennial, CO 80112
USA
Phone: 303.730.1950
Toll Free: 1.888.506.6887
Fax: 303.730.1966
nb-customerservice@bio-techne.com

Bio-Techne Canada

21 Canmotor Ave
Toronto, ON M8Z 4E6
Canada
Phone: 905.827.6400
Toll Free: 855.668.8722
Fax: 905.827.6402
canada.inquires@bio-techne.com

Bio-Techne Ltd

19 Barton Lane
Abingdon Science Park
Abingdon, OX14 3NB, United Kingdom
Phone: (44) (0) 1235 529449
Free Phone: 0800 37 34 15
Fax: (44) (0) 1235 533420
info.EMEA@bio-techne.com

General Contact Information

www.novusbio.com
Technical Support: nb-technical@bio-techne.com
Orders: nb-customerservice@bio-techne.com
General: novus@novusbio.com

Limitations

This product is for research use only and is not approved for use in humans or in clinical diagnosis. Primary Antibodies are guaranteed for 1 year from date of receipt.

For more information on our 100% guarantee, please visit www.novusbio.com/guarantee

Earn gift cards/discounts by submitting a review: www.novusbio.com/reviews/submit/NBP2-67733

Earn gift cards/discounts by submitting a publication using this product:
www.novusbio.com/publications

