

# Product Datasheet

## RPA2 [p Thr21] Antibody (SN06-36) NBP2-67654

Unit Size: 100 ul

Store at 4C short term. Aliquot and store at -20C long term. Avoid freeze-thaw cycles.

[www.novusbio.com](http://www.novusbio.com)



[technical@novusbio.com](mailto:technical@novusbio.com)

Protocols, Publications, Related Products, Reviews, Research Tools and Images at:  
[www.novusbio.com/NBP2-67654](http://www.novusbio.com/NBP2-67654)

Updated 1/3/2023 v.20.1

Earn rewards for product  
reviews and publications.

Submit a publication at [www.novusbio.com/publications](http://www.novusbio.com/publications)

Submit a review at [www.novusbio.com/reviews/destination/NBP2-67654](http://www.novusbio.com/reviews/destination/NBP2-67654)



**NBP2-67654**

RPA2 [p Thr21] Antibody (SN06-36)

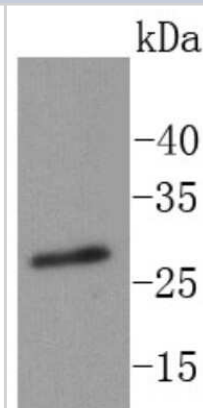
| Product Information |  |
|---------------------|--|
| Unit Size           | 100 ul   |
| Concentration       | 1 mg/ml  |
| Storage             | Store at 4C short term. Aliquot and store at -20C long term. Avoid freeze-thaw cycles. |
| Clonality           | Monoclonal   |
| Clone               | SN06-36  |
| Preservative        | 0.05% Sodium Azide   |
| Isotype             | IgG  |
| Purity              | Protein A purified   |
| Buffer              | TBS (pH7.4), 0.05% BSA, 40% Glycerol   |

| Product Description |  |
|---------------------|--|
| Host                | Rabbit   |
| Gene Symbol         | RPA2   |
| Species             | Human, Mouse, Rat  |
| Immunogen           | Synthetic phospho-peptide corresponding to residues surrounding Thr21 of Human RPA2 aa 1-50 / 270. (SwissProt: P15927 Human; SwissProt: Q62193 Mouse; SwissProt: Q63528 Rat) |

| Product Application Details |  |
|-----------------------------|--|
| Applications                | Western Blot, Immunoprecipitation        |
| Recommended Dilutions       | Western Blot 1:1000, Immunoprecipitation |

**Images**

Western Blot: RPA2 [p Thr21] Antibody (SN06-36) [NBP2-67654] - Analysis of RPA32/RPA2 (phospho T21) on Hela cells lysates using anti-RPA32/RPA2 (phospho T21) antibody at 1/1,000 dilution.





### **Novus Biologicals USA**

10730 E. Briarwood Avenue  
Centennial, CO 80112  
USA  
Phone: 303.730.1950  
Toll Free: 1.888.506.6887  
Fax: 303.730.1966  
nb-customerservice@bio-techne.com

### **Bio-Techne Canada**

21 Canmotor Ave  
Toronto, ON M8Z 4E6  
Canada  
Phone: 905.827.6400  
Toll Free: 855.668.8722  
Fax: 905.827.6402  
canada.inquires@bio-techne.com

### **Bio-Techne Ltd**

19 Barton Lane  
Abingdon Science Park  
Abingdon, OX14 3NB, United Kingdom  
Phone: (44) (0) 1235 529449  
Free Phone: 0800 37 34 15  
Fax: (44) (0) 1235 533420  
info.EMEA@bio-techne.com

### **General Contact Information**

www.novusbio.com  
Technical Support: nb-technical@bio-techne.com  
Orders: nb-customerservice@bio-techne.com  
General: novus@novusbio.com

### **Limitations**

This product is for research use only and is not approved for use in humans or in clinical diagnosis. Primary Antibodies are guaranteed for 1 year from date of receipt.

For more information on our 100% guarantee, please visit [www.novusbio.com/guarantee](http://www.novusbio.com/guarantee)

Earn gift cards/discounts by submitting a review: [www.novusbio.com/reviews/submit/NBP2-67654](http://www.novusbio.com/reviews/submit/NBP2-67654)

Earn gift cards/discounts by submitting a publication using this product:  
[www.novusbio.com/publications](http://www.novusbio.com/publications)

