

Product Datasheet

Cytochrome c Antibody (SC69-08) NBP2-67604

Unit Size: 100 ul

Store at 4C short term. Aliquot and store at -20C long term. Avoid freeze-thaw cycles.

www.novusbio.com



technical@novusbio.com

Protocols, Publications, Related Products, Reviews, Research Tools and Images at:
www.novusbio.com/NBP2-67604

Updated 1/3/2023 v.20.1

Earn rewards for product
reviews and publications.

Submit a publication at www.novusbio.com/publications

Submit a review at www.novusbio.com/reviews/destination/NBP2-67604



NBP2-67604

Cytochrome c Antibody (SC69-08)

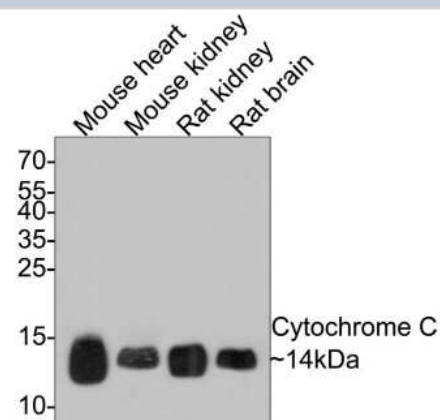
Product Information	
Unit Size	100 ul
Concentration	1 mg/ml
Storage	Store at 4C short term. Aliquot and store at -20C long term. Avoid freeze-thaw cycles.
Clonality	Monoclonal
Clone	SC69-08
Preservative	0.05% Sodium Azide
Isotype	IgG
Purity	Protein A purified
Buffer	TBS (pH7.4), 0.05% BSA, 40% Glycerol

Product Description	
Host	Rabbit
Gene Symbol	CYCS
Species	Human, Mouse, Rat
Immunogen	Synthetic peptide within human Cytochrome c aa 20-60. (SwissProt: P99999 Human; SwissProt: P62897 Mouse; SwissProt: P62898 Rat)

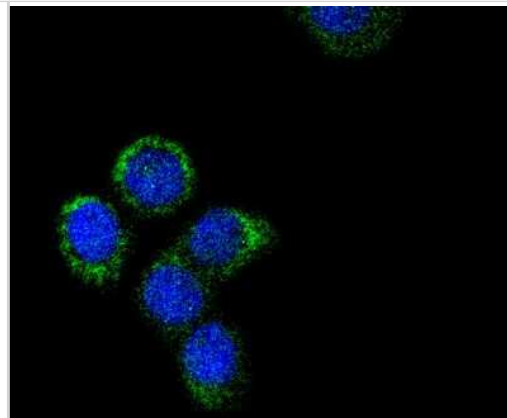
Product Application Details	
Applications	Western Blot, Immunocytochemistry/ Immunofluorescence, Immunohistochemistry, Immunohistochemistry-Paraffin, Immunoprecipitation
Recommended Dilutions	Western Blot 1:1000, Immunohistochemistry, Immunocytochemistry/ Immunofluorescence 1:50-1:100, Immunoprecipitation, Immunohistochemistry-Paraffin 1:50-1:1000

Images

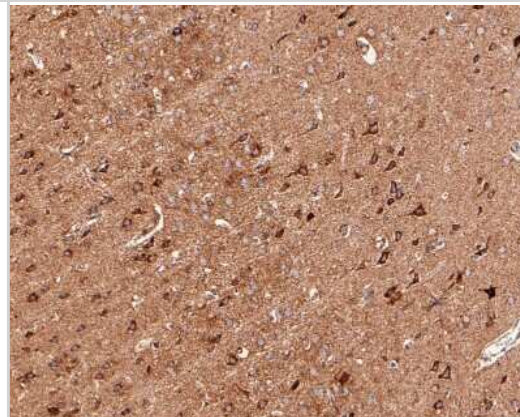
Western Blot: Cytochrome c Antibody (SC69-08) [NBP2-67604] - Analysis of Cytochrome C on different lysates with Rabbit anti-Cytochrome C antibody at 1/1,000 dilution. Lane 1: Mouse heart tissue lysate Lane 2: Mouse kidney liver tissue lysate Lane 3: Rat kidney tissue lysate Lane 4: Rat brain tissue lysate Lysates/proteins at 20 ug/Lane. Predicted band size: 12 kDa Observed band size: 14 kDa Exposure time: 2 minutes; 15% SDS-PAGE gel. Proteins were transferred to a PVDF membrane and blocked with 5% NFDM/TBST for 1 hour at room temperature. The primary antibody at 1/1,000 dilution was used in 5% NFDM/TBST at room temperature for 2 hours. Goat Anti-Rabbit IgG - HRP Secondary Antibody at 1:300,000 dilution was used for 1 hour at room temperature.



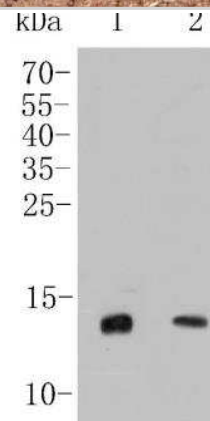
Immunocytochemistry/Immunofluorescence: Cytochrome c Antibody (SC69-08) [NBP2-67604] - Staining Cytochrome C in MCF-7 cells (green). The nuclear counter stain is DAPI (blue). Cells were fixed in paraformaldehyde, permeabilised with 0.25% Triton X100/PBS.



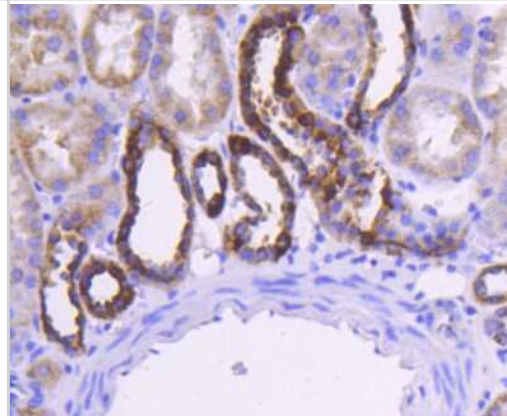
Immunohistochemistry-Paraffin: Cytochrome c Antibody (SC69-08) [NBP2-67604] - Analysis of paraffin-embedded rat brain tissue with Rabbit anti-Cytochrome C antibody. The section was pre-treated using heat mediated antigen retrieval with Tris-EDTA buffer (pH 9.0) for 20 minutes. The tissues were blocked in 1% BSA for 20 minutes at room temperature, washed with ddH₂O and PBS, and then probed with the primary antibody for 1 hour at room temperature. The detection was performed using an HRP conjugated compact polymer system. DAB was used as the chromogen. Tissues were counterstained with hematoxylin and mounted with DPX.



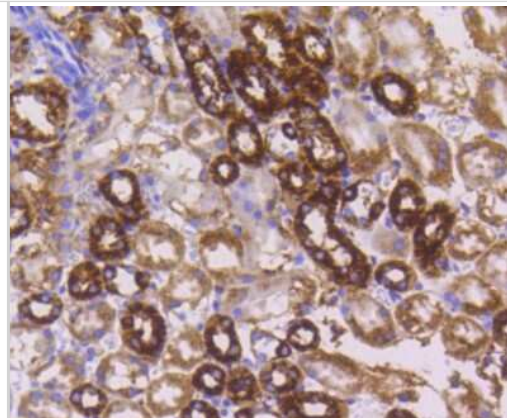
Western Blot: Cytochrome c Antibody (SC69-08) [NBP2-67604] - Analysis of Cytochrome C on different lysates. Proteins were transferred to a PVDF membrane and blocked with 5% BSA in PBS for 1 hour at room temperature. The primary antibody (1/500) was used in 5% BSA at room temperature for 2 hours. Goat Anti-Rabbit IgG - HRP Secondary Antibody at 1:5,000 dilution was used for 1 hour at room temperature. Positive control: Lane 1: Mouse heart tissue lysate Lane 2: Mouse kidney tissue lysate



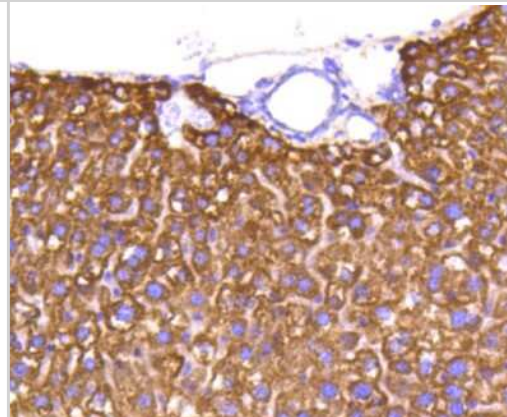
Immunohistochemistry-Paraffin: Cytochrome c Antibody (SC69-08) [NBP2-67604] - Analysis of paraffin-embedded human kidney tissue using anti-Cytochrome C antibody. Counter stained with hematoxylin.



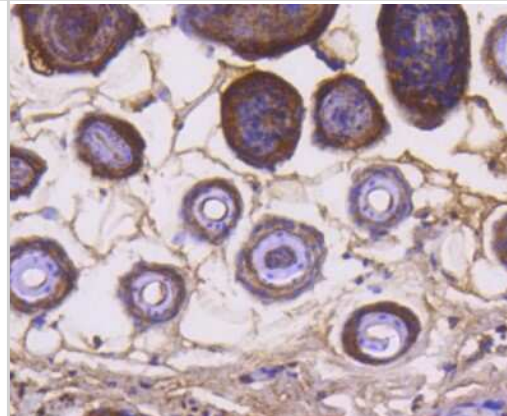
Immunohistochemistry-Paraffin: Cytochrome c Antibody (SC69-08) [NBP2-67604] - Analysis of paraffin-embedded mouse kidney tissue using anti-Cytochrome C antibody. Counter stained with hematoxylin.



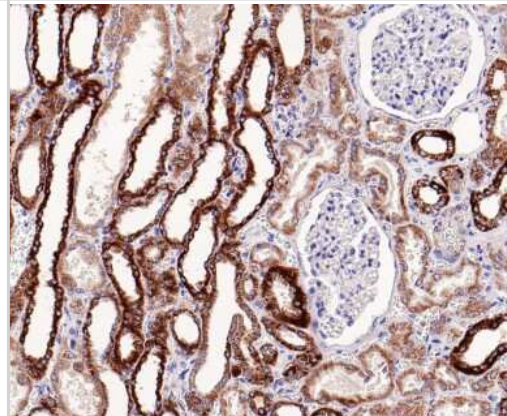
Immunohistochemistry-Paraffin: Cytochrome c Antibody (SC69-08) [NBP2-67604] - Analysis of paraffin-embedded mouse liver tissue using anti-Cytochrome C antibody. Counter stained with hematoxylin.



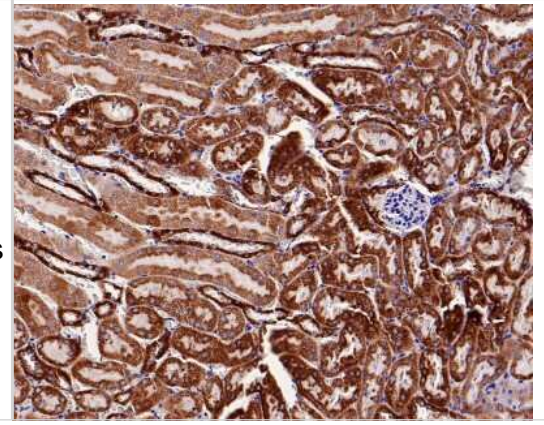
Immunohistochemistry-Paraffin: Cytochrome c Antibody (SC69-08) [NBP2-67604] - Analysis of paraffin-embedded mouse skin tissue using anti-Cytochrome C antibody. Counter stained with hematoxylin.



Immunohistochemistry-Paraffin: Cytochrome c Antibody (SC69-08) [NBP2-67604] - Analysis of paraffin-embedded human kidney tissue with Rabbit anti-Cytochrome C antibody. The section was pre-treated using heat mediated antigen retrieval with Tris-EDTA buffer (pH 9.0) for 20 minutes. The tissues were blocked in 1% BSA for 20 minutes at room temperature, washed with ddH2O and PBS, and then probed with the primary antibody for 1 hour at room temperature. The detection was performed using an HRP conjugated compact polymer system. DAB was used as the chromogen. Tissues were counterstained with hematoxylin and mounted with DPX.



Immunohistochemistry-Paraffin: Cytochrome c Antibody (SC69-08) [NBP2-67604] - Analysis of paraffin-embedded mouse kidney tissue with Rabbit anti-Cytochrome C antibody. The section was pre-treated using heat mediated antigen retrieval with Tris-EDTA buffer (pH 9.0) for 20 minutes. The tissues were blocked in 1% BSA for 20 minutes at room temperature, washed with ddH₂O and PBS, and then probed with the primary antibody for 1 hour at room temperature. The detection was performed using an HRP conjugated compact polymer system. DAB was used as the chromogen. Tissues were counterstained with hematoxylin and mounted with DPX.





Novus Biologicals USA

10730 E. Briarwood Avenue
Centennial, CO 80112
USA
Phone: 303.730.1950
Toll Free: 1.888.506.6887
Fax: 303.730.1966
nb-customerservice@bio-techne.com

Bio-Techne Canada

21 Canmotor Ave
Toronto, ON M8Z 4E6
Canada
Phone: 905.827.6400
Toll Free: 855.668.8722
Fax: 905.827.6402
canada.inquires@bio-techne.com

Bio-Techne Ltd

19 Barton Lane
Abingdon Science Park
Abingdon, OX14 3NB, United Kingdom
Phone: (44) (0) 1235 529449
Free Phone: 0800 37 34 15
Fax: (44) (0) 1235 533420
info.EMEA@bio-techne.com

General Contact Information

www.novusbio.com
Technical Support: nb-technical@bio-techne.com
Orders: nb-customerservice@bio-techne.com
General: novus@novusbio.com

Limitations

This product is for research use only and is not approved for use in humans or in clinical diagnosis. Primary Antibodies are guaranteed for 1 year from date of receipt.

For more information on our 100% guarantee, please visit www.novusbio.com/guarantee

Earn gift cards/discounts by submitting a review: www.novusbio.com/reviews/submit/NBP2-67604

Earn gift cards/discounts by submitting a publication using this product:
www.novusbio.com/publications

