

# Product Datasheet

## PI 3-Kinase p110 beta/PIK3CB Antibody (SC0580) NBP2-67579

Unit Size: 100 ul

Store at 4C short term. Aliquot and store at -20C long term. Avoid freeze-thaw cycles.

[www.novusbio.com](http://www.novusbio.com)



[technical@novusbio.com](mailto:technical@novusbio.com)

Protocols, Publications, Related Products, Reviews, Research Tools and Images at:  
[www.novusbio.com/NBP2-67579](http://www.novusbio.com/NBP2-67579)

Updated 1/3/2023 v.20.1

Earn rewards for product  
reviews and publications.

Submit a publication at [www.novusbio.com/publications](http://www.novusbio.com/publications)

Submit a review at [www.novusbio.com/reviews/destination/NBP2-67579](http://www.novusbio.com/reviews/destination/NBP2-67579)



**NBP2-67579**

PI 3-Kinase p110 beta/PIK3CB Antibody (SC0580)

**Product Information**

<b>Unit Size</b>	100 ul
<b>Concentration</b>	1 mg/ml
<b>Storage</b>	Store at 4C short term. Aliquot and store at -20C long term. Avoid freeze-thaw cycles.
<b>Clonality</b>	Monoclonal
<b>Clone</b>	SC0580
<b>Preservative</b>	0.05% Sodium Azide
<b>Isotype</b>	IgG
<b>Purity</b>	Protein A purified
<b>Buffer</b>	TBS (pH7.4), 0.05% BSA, 40% Glycerol

**Product Description**

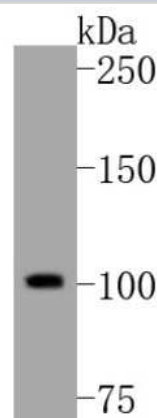
<b>Host</b>	Rabbit
<b>Gene Symbol</b>	PIK3CB
<b>Species</b>	Human
<b>Immunogen</b>	Synthetic peptide within Human PI 3-Kinase p110 beta/PIK3CB aa 5-52 / 1070. (SwissProt: P42338 Human)

**Product Application Details**

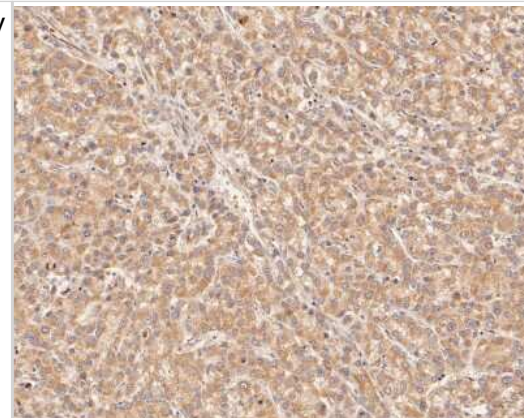
<b>Applications</b>	Western Blot, Flow Cytometry, Immunohistochemistry-Paraffin, Immunoprecipitation
<b>Recommended Dilutions</b>	Western Blot 1:1000, Flow Cytometry 1:50-1:100, Immunoprecipitation, Immunohistochemistry-Paraffin 1:50-1:100

**Images**

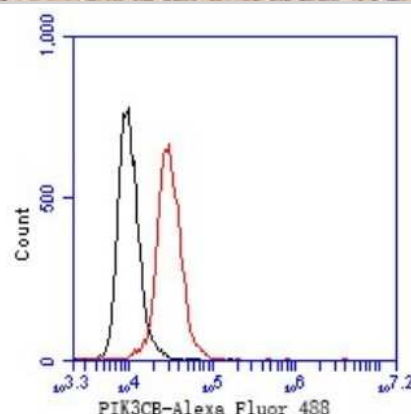
Western Blot: PI 3-Kinase p110 beta/PIK3CB Antibody (SC0580) [NBP2-67579] - Western blot analysis of PI 3-Kinase p110 beta/PIK3CB on Hela cell lysates. Proteins were transferred to a PVDF membrane and blocked with 5% BSA in PBS for 1 hour at room temperature. The primary antibody (1/500) was used in 5% BSA at room temperature for



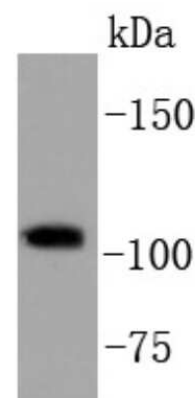
**Immunohistochemistry-Paraffin:** PI 3-Kinase p110 beta/PIK3CB Antibody (SC0580) [NBP2-67579] - Immunohistochemical analysis of paraffin-embedded human liver carcinoma tissue using anti-PI 3-Kinase p110 beta/PIK3CB antibody. The section was pre-treated using heat mediated antigen retrieval with Tris-EDTA buffer (pH 8.0-8.4) for 20 minutes. The tissues were blocked in 5% BSA for 30 minutes at room temperature, washed with ddH<sub>2</sub>O and PBS, and then probed with the primary antibody (ET1610-36, 1/50) for 30 minutes at room temperature. The detection was performed using an HRP conjugated compact polymer system. DAB was used as the chromogen. Tissues were counterstained with hematoxylin and mounted with DPX.



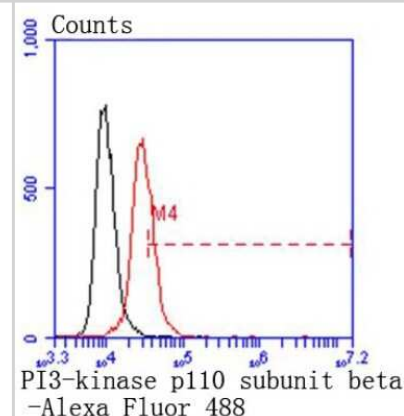
**Flow Cytometry:** PI 3-Kinase p110 beta/PIK3CB Antibody (SC0580) [NBP2-67579] - Flow cytometric analysis of PI 3-Kinase p110 beta/PIK3CB was done on Hela cells. The cells were fixed, permeabilized and stained with the primary antibody (1/50) (red). After incubation of the primary antibody at room temperature for an hour, the cells were stained with a Alexa Fluor 488-conjugated Goat anti-Rabbit IgG Secondary antibody at 1/1000 dilution for 30 minutes. Unlabeled sample was used as a control (cells without incubation with primary antibody; black).



**Western Blot:** PI 3-Kinase p110 beta/PIK3CB Antibody (SC0580) [NBP2-67579] - Analysis of PI3-kinase p110 subunit beta on Hela cell lysates using anti-PI3-kinase p110 subunit beta antibody at 1/1,000 dilution.



**Flow Cytometry:** PI 3-Kinase p110 beta/PIK3CB Antibody (SC0580) [NBP2-67579] - Analysis of Hela cells with PI3-kinase p110 subunit beta antibody at 1/50 dilution (red) compared with an unlabelled control (cells without incubation with primary antibody; black). Alexa Fluor 488-conjugated goat anti rabbit IgG was secondary





### **Novus Biologicals USA**

10730 E. Briarwood Avenue  
Centennial, CO 80112  
USA  
Phone: 303.730.1950  
Toll Free: 1.888.506.6887  
Fax: 303.730.1966  
nb-customerservice@bio-techne.com

### **Bio-Techne Canada**

21 Canmotor Ave  
Toronto, ON M8Z 4E6  
Canada  
Phone: 905.827.6400  
Toll Free: 855.668.8722  
Fax: 905.827.6402  
canada.inquires@bio-techne.com

### **Bio-Techne Ltd**

19 Barton Lane  
Abingdon Science Park  
Abingdon, OX14 3NB, United Kingdom  
Phone: (44) (0) 1235 529449  
Free Phone: 0800 37 34 15  
Fax: (44) (0) 1235 533420  
info.EMEA@bio-techne.com

### **General Contact Information**

[www.novusbio.com](http://www.novusbio.com)  
Technical Support: nb-technical@bio-techne.com  
Orders: nb-customerservice@bio-techne.com  
General: novus@novusbio.com

### **Limitations**

This product is for research use only and is not approved for use in humans or in clinical diagnosis. Primary Antibodies are guaranteed for 1 year from date of receipt.

For more information on our 100% guarantee, please visit [www.novusbio.com/guarantee](http://www.novusbio.com/guarantee)

Earn gift cards/discounts by submitting a review: [www.novusbio.com/reviews/submit/NBP2-67579](http://www.novusbio.com/reviews/submit/NBP2-67579)

Earn gift cards/discounts by submitting a publication using this product:  
[www.novusbio.com/publications](http://www.novusbio.com/publications)

