

Product Datasheet

ER alpha/NR3A1 [p Ser118] Antibody (SC05-87) NBP2-67575

Unit Size: 100 ul

Store at 4C short term. Aliquot and store at -20C long term. Avoid freeze-thaw cycles.

www.novusbio.com



technical@novusbio.com

Protocols, Publications, Related Products, Reviews, Research Tools and Images at:
www.novusbio.com/NBP2-67575

Updated 1/3/2023 v.20.1

Earn rewards for product
reviews and publications.

Submit a publication at www.novusbio.com/publications

Submit a review at www.novusbio.com/reviews/destination/NBP2-67575



NBP2-67575

ER alpha/NR3A1 [p Ser118] Antibody (SC05-87)

Product Information

Unit Size	100 ul
Concentration	1 mg/ml
Storage	Store at 4C short term. Aliquot and store at -20C long term. Avoid freeze-thaw cycles.
Clonality	Monoclonal
Clone	SC05-87
Preservative	0.05% Sodium Azide
Isotype	IgG
Purity	Protein A purified
Buffer	TBS (pH7.4), 0.05% BSA, 40% Glycerol

Product Description

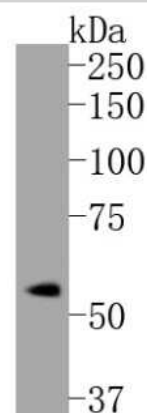
Host	Rabbit
Gene Symbol	ESR1
Species	Human, Mouse
Immunogen	Synthetic phospho-peptide corresponding to residues surrounding Ser118 of Human ER alpha/NR3A1 aa 110-154 / 595. (SwissProt: P03372 Human; SwissProt: P19785 Mouse)

Product Application Details

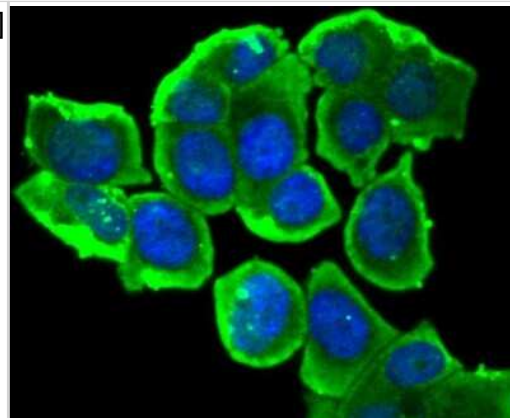
Applications	Western Blot, Immunocytochemistry/ Immunofluorescence, Immunohistochemistry, Immunohistochemistry-Paraffin
Recommended Dilutions	Western Blot 1:1000, Immunohistochemistry, Immunocytochemistry/ Immunofluorescence 1:50-1:200, Immunohistochemistry-Paraffin 1:50-1:500

Images

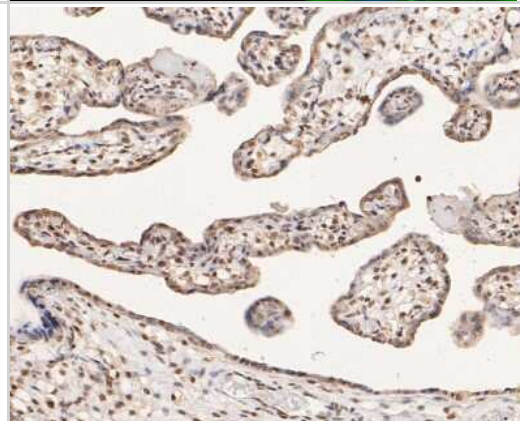
Western Blot: ER alpha/NR3A1 [p Ser118] Antibody (SC05-87) [NBP2-67575] - Western blot analysis of ER alpha/NR3A1 on MCF-7 cell lysates. Proteins were transferred to a PVDF membrane and blocked with 5% BSA in PBS for 1 hour at room temperature. The primary antibody (1/500) was used in 5% BSA at room temperature for 2 hours. Goa



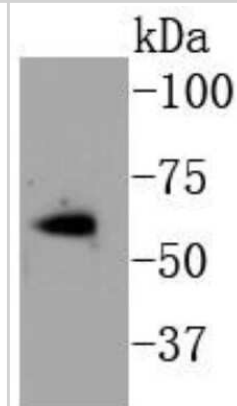
Immunocytochemistry/Immunofluorescence: ER alpha/NR3A1 [p Ser118] Antibody (SC05-87) [NBP2-67575] - Staining phospho-Estrogen Receptor alpha(S118) in MCF-7 cells (green). The nuclear counter stain is DAPI (blue). Cells were fixed in paraformaldehyde, permeabilised with 0.25% Triton X100/PBS.



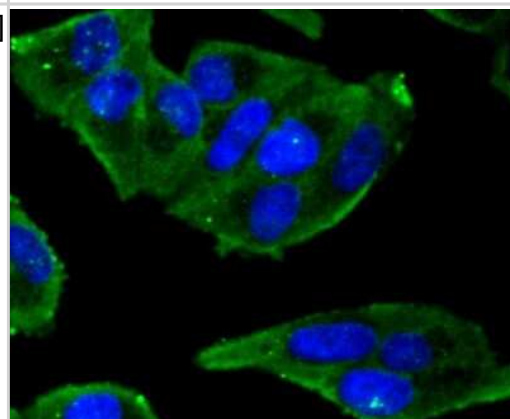
Immunohistochemistry-Paraffin: ER alpha/NR3A1 [p Ser118] Antibody (SC05-87) [NBP2-67575] - Immunohistochemical analysis of paraffin-embedded human placenta tissue using anti-ER alpha/NR3A1 antibody. The section was pre-treated using heat mediated antigen retrieval with Tris-EDTA buffer (pH 8.0-8.4) for 20 minutes. The tissues were blocked in 5% BSA for 30 minutes at room temperature, washed with ddH2O and PBS, and then probed with the primary antibody (ET1610-32, 1/50) for 30 minutes at room temperature. The detection was performed using an HRP conjugated compact polymer system. DAB was used as the chromogen. Tissues were counterstained with hematoxylin and mounted with DPX.



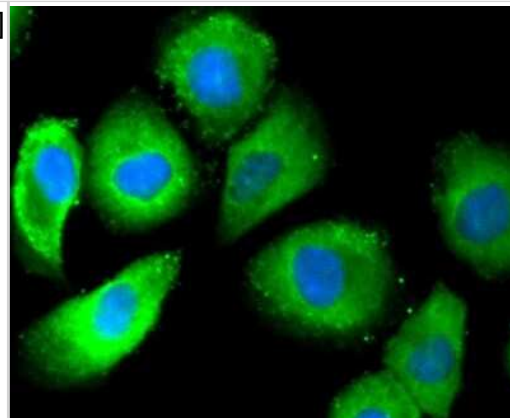
Western Blot: ER alpha/NR3A1 [p Ser118] Antibody (SC05-87) [NBP2-67575] - Analysis of Estrogen Receptor alpha(phospho S118) on MCF-7 cell lysates using anti- phospho-Estrogen Receptor alpha(S118) antibody at 1/1,000 dilution.



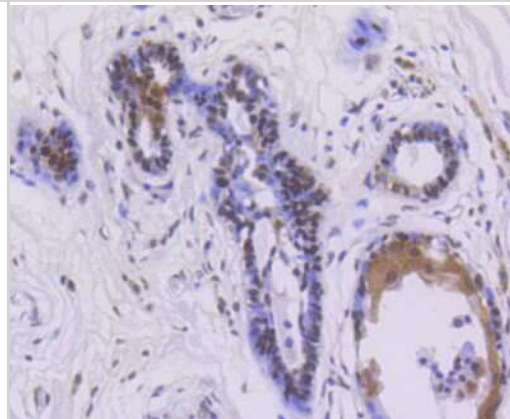
Immunocytochemistry/Immunofluorescence: ER alpha/NR3A1 [p Ser118] Antibody (SC05-87) [NBP2-67575] - Staining phospho-Estrogen Receptor alpha(S118) in Hela cells (green). The nuclear counter stain is DAPI (blue). Cells were fixed in paraformaldehyde, permeabilised with 0.25% Triton X100/PBS.



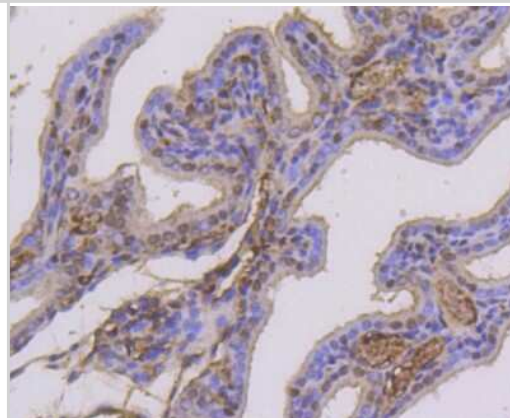
Immunocytochemistry/Immunofluorescence: ER alpha/NR3A1 [p Ser118] Antibody (SC05-87) [NBP2-67575] - Staining phospho-Estrogen Receptor alpha(S118) in HUVEC cells (green). The nuclear counter stain is DAPI (blue). Cells were fixed in paraformaldehyde, permeabilised with 0.25% Triton X100/PBS.



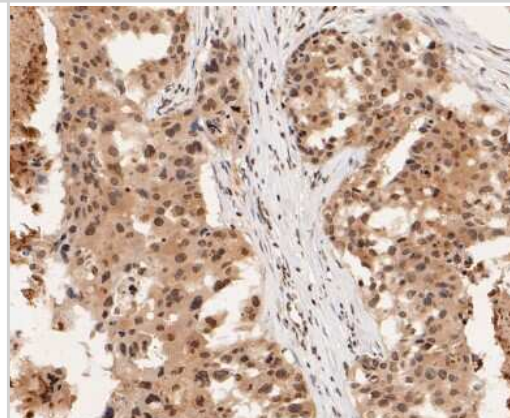
Immunohistochemistry-Paraffin: ER alpha/NR3A1 [p Ser118] Antibody (SC05-87) [NBP2-67575] - Analysis of paraffin-embedded human breast carcinoma tissue using anti- phospho-Estrogen Receptor alpha(S118) antibody. Counter stained with hematoxylin.



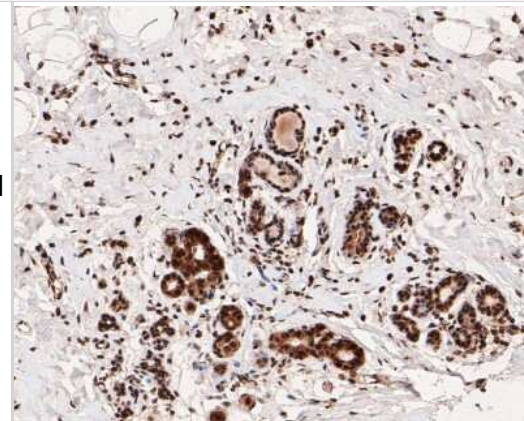
Immunohistochemistry-Paraffin: ER alpha/NR3A1 [p Ser118] Antibody (SC05-87) [NBP2-67575] - Analysis of paraffin-embedded mouse placenta tissue using anti- phospho-Estrogen Receptor alpha(S118) antibody. Counter stained with hematoxylin.



Immunohistochemistry-Paraffin: ER alpha/NR3A1 [p Ser118] Antibody (SC05-87) [NBP2-67575] - Immunohistochemical analysis of paraffin-embedded human breast carcinoma tissue using anti-ER alpha/NR3A1 antibody. The section was pre-treated using heat mediated antigen retrieval with Tris-EDTA buffer (pH 8.0-8.4) for 20 minutes. The tissues were blocked in 5% BSA for 30 minutes at room temperature, washed with ddH2O and PBS, and then probed with the primary antibody (ET1610-32, 1/50) for 30 minutes at room temperature. The detection was performed using an HRP conjugated compact polymer system. DAB was used as the chromogen. Tissues were counterstained with hematoxylin and mounted with DPX.



Immunohistochemistry-Paraffin: ER alpha/NR3A1 [p Ser118] Antibody (SC05-87) [NBP2-67575] - Immunohistochemical analysis of paraffin-embedded human breast tissue using anti-ER alpha/NR3A1 antibody. The section was pre-treated using heat mediated antigen retrieval with Tris-EDTA buffer (pH 8.0-8.4) for 20 minutes. The tissues were blocked in 5% BSA for 30 minutes at room temperature, washed with ddH₂O and PBS, and then probed with the primary antibody (ET1610-32, 1/50) for 30 minutes at room temperature. The detection was performed using an HRP conjugated compact polymer system. DAB was used as the chromogen. Tissues were counterstained with hematoxylin and mounted with DPX.





Novus Biologicals USA

10730 E. Briarwood Avenue
Centennial, CO 80112
USA
Phone: 303.730.1950
Toll Free: 1.888.506.6887
Fax: 303.730.1966
nb-customerservice@bio-techne.com

Bio-Techne Canada

21 Canmotor Ave
Toronto, ON M8Z 4E6
Canada
Phone: 905.827.6400
Toll Free: 855.668.8722
Fax: 905.827.6402
canada.inquires@bio-techne.com

Bio-Techne Ltd

19 Barton Lane
Abingdon Science Park
Abingdon, OX14 3NB, United Kingdom
Phone: (44) (0) 1235 529449
Free Phone: 0800 37 34 15
Fax: (44) (0) 1235 533420
info.EMEA@bio-techne.com

General Contact Information

www.novusbio.com
Technical Support: nb-technical@bio-
techne.com
Orders: nb-customerservice@bio-techne.com
General: novus@novusbio.com

Limitations

This product is for research use only and is not approved for use in humans or in clinical diagnosis. Primary Antibodies are guaranteed for 1 year from date of receipt.

For more information on our 100% guarantee, please visit www.novusbio.com/guarantee

Earn gift cards/discounts by submitting a review: www.novusbio.com/reviews/submit/NBP2-67575

Earn gift cards/discounts by submitting a publication using this product:
www.novusbio.com/publications

