

Product Datasheet

ATF2 [p Thr71] Antibody (SC05-90) NBP2-67573

Unit Size: 100 ul

Store at 4C short term. Aliquot and store at -20C long term. Avoid freeze-thaw cycles.

www.novusbio.com



technical@novusbio.com

Protocols, Publications, Related Products, Reviews, Research Tools and Images at:
www.novusbio.com/NBP2-67573

Updated 1/3/2023 v.20.1

Earn rewards for product
reviews and publications.

Submit a publication at www.novusbio.com/publications

Submit a review at www.novusbio.com/reviews/destination/NBP2-67573



NBP2-67573

ATF2 [p Thr71] Antibody (SC05-90)

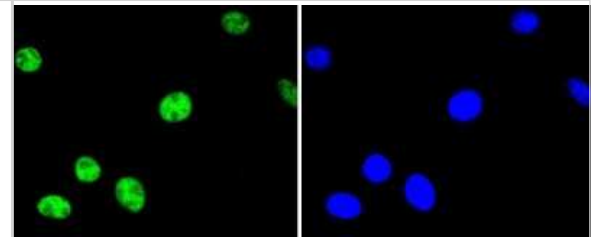
Product Information	
Unit Size	100 ul
Concentration	1 mg/ml
Storage	Store at 4C short term. Aliquot and store at -20C long term. Avoid freeze-thaw cycles.
Clonality	Monoclonal
Clone	SC05-90
Preservative	0.05% Sodium Azide
Isotype	IgG
Purity	Protein A purified
Buffer	TBS (pH7.4), 0.05% BSA, 40% Glycerol

Product Description	
Host	Rabbit
Gene Symbol	ATF2
Species	Human, Mouse, Rat
Immunogen	Synthetic phospho-peptide corresponding to residues surrounding Thr71 of Human ATF2 aa 58-94 / 505. (SwissProt: P15336 Human; SwissProt: P16951 Mouse; SwissProt: Q00969 Rat)

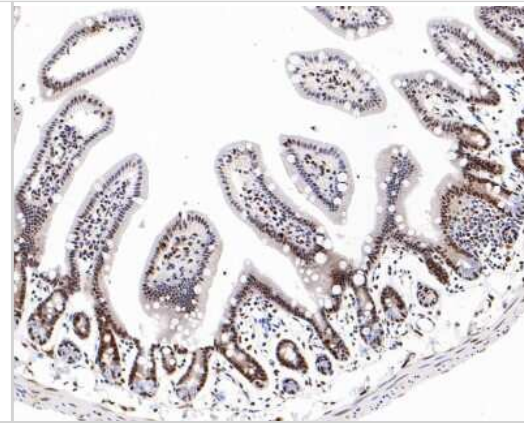
Product Application Details	
Applications	Western Blot, Immunocytochemistry/ Immunofluorescence, Immunohistochemistry, Immunohistochemistry-Paraffin, Immunoprecipitation
Recommended Dilutions	Western Blot 1:1000, Immunohistochemistry, Immunocytochemistry/ Immunofluorescence 1:50-1:200, Immunoprecipitation, Immunohistochemistry-Paraffin 1:100-1:800

Images

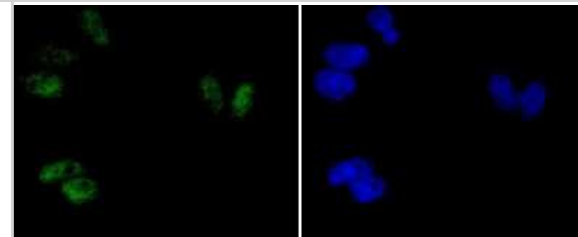
Immunocytochemistry/Immunofluorescence: ATF2 [p Thr71] Antibody (SC05-90) [NBP2-67573] - LRP-1 Cluster III [p Thr71] Antibody (SC05-90) [NBP2-67573] - (T71) in SH-SY-5Y cells (green). The nuclear counter stain is DAPI (blue). Cells were fixed in paraformaldehyde, permeabilised with 0.25% Triton X100/PBS.



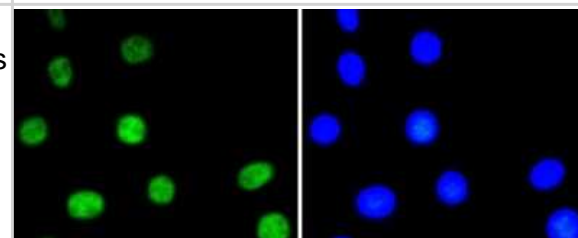
Immunohistochemistry-Paraffin: ATF2 [p Thr71] Antibody (SC05-90) [NBP2-67573] - Analysis of paraffin-embedded mouse large intestine tissue with Rabbit anti-Phospho-ATF2 [p Thr71] antibody washed with ddH₂O and PBS, and then probed with the primary antibody at 1/800 dilution for 1 hour at room temperature. The detection was performed using an HRP conjugated compact polymer system. DAB was used as the chromogen. Tissues were counterstained with hematoxylin and mounted with DPX.



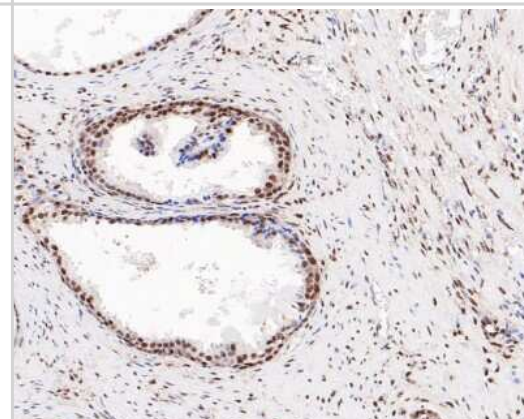
Immunocytochemistry/Immunofluorescence: ATF2 [p Thr71] Antibody (SC05-90) [NBP2-67573] - Staining phospho-ATF2(T71) in Hela cells (green). The nuclear counter stain is DAPI (blue). Cells were fixed in paraformaldehyde, permeabilised with 0.25% Triton X100/PBS.



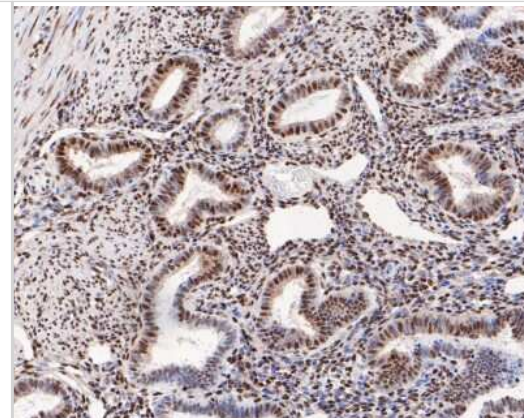
Immunocytochemistry/Immunofluorescence: ATF2 [p Thr71] Antibody (SC05-90) [NBP2-67573] - Staining phospho-ATF2(T71) in NIH/3T3 cells (green). The nuclear counter stain is DAPI (blue). Cells were fixed in paraformaldehyde, permeabilised with 0.25% Triton X100/PBS.



Immunohistochemistry-Paraffin: ATF2 [p Thr71] Antibody (SC05-90) [NBP2-67573] - Immunohistochemical analysis of paraffin-embedded human prostate tissue using anti-ATF2 antibody. The section was pre-treated using heat mediated antigen retrieval with sodium citrate buffer (pH 6.0) for 20 minutes. The tissues were blocked in 5% BSA for 30 minutes at room temperature, washed with ddH₂O and PBS, and then probed with the primary antibody (ET1610-30, 1/200) for 30 minutes at room temperature. The detection was performed using an HRP conjugated compact polymer system. DAB was used as the chromogen. Tissues were counterstained with hematoxylin and mounted with DPX.



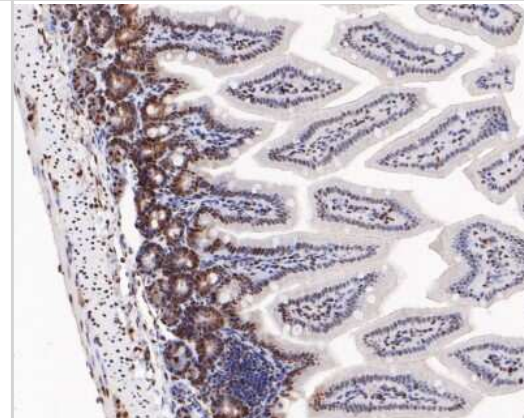
Immunohistochemistry-Paraffin: ATF2 [p Thr71] Antibody (SC05-90) [NBP2-67573] - Immunohistochemical analysis of paraffin-embedded human uterus tissue using anti-ATF2 antibody. The section was pre-treated using heat mediated antigen retrieval with sodium citrate buffer (pH 6.0) for 20 minutes. The tissues were blocked in 5% BSA for 30 minutes at room temperature, washed with ddH₂O and PBS, and then probed with the primary antibody (ET1610-30, 1/200) for 30 minutes at room temperature. The detection was performed using an HRP conjugated compact polymer system. DAB was used as the chromogen. Tissues were counterstained with hematoxylin and mounted with DPX.



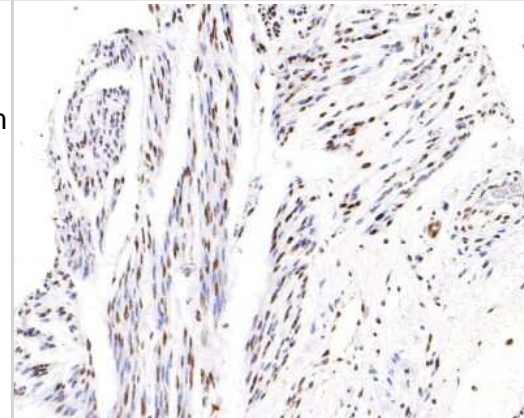
Immunohistochemistry-Paraffin: ATF2 [p Thr71] Antibody (SC05-90) [NBP2-67573] - Immunohistochemical analysis of paraffin-embedded rat brain tissue using anti-ATF2 antibody. The section was pre-treated using heat mediated antigen retrieval with sodium citrate buffer (pH 6.0) for 20 minutes. The tissues were blocked in 5% BSA for 30 minutes at room temperature, washed with ddH₂O and PBS, and then probed with the primary antibody (ET1610-30, 1/200) for 30 minutes at room temperature. The detection was performed using an HRP conjugated compact polymer system. DAB was used as the chromogen. Tissues were counterstained with hematoxylin and mounted with DPX.



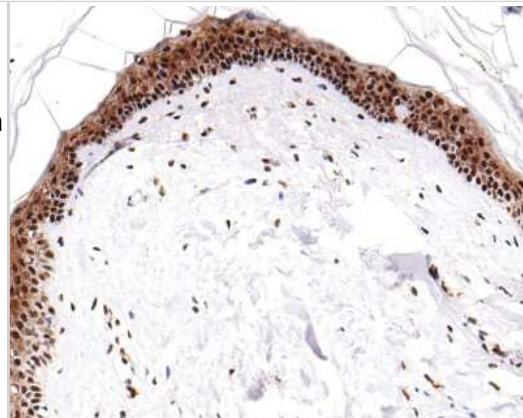
Immunohistochemistry-Paraffin: ATF2 [p Thr71] Antibody (SC05-90) [NBP2-67573] - Immunohistochemical analysis of paraffin-embedded mouse colon tissue using anti-ATF2 antibody. The section was pre-treated using heat mediated antigen retrieval with sodium citrate buffer (pH 6.0) for 20 minutes. The tissues were blocked in 5% BSA for 30 minutes at room temperature, washed with ddH₂O and PBS, and then probed with the primary antibody (ET1610-30, 1/200) for 30 minutes at room temperature. The detection was performed using an HRP conjugated compact polymer system. DAB was used as the chromogen. Tissues were counterstained with hematoxylin and mounted with DPX.



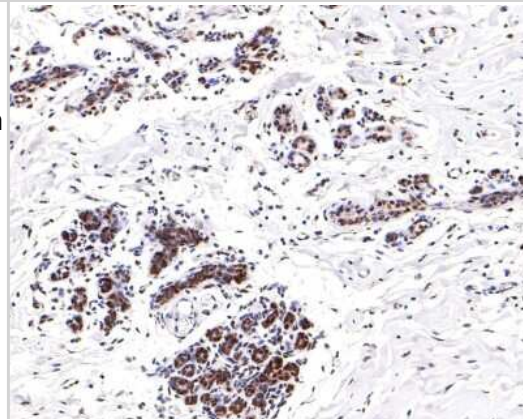
Immunohistochemistry-Paraffin: ATF2 [p Thr71] Antibody (SC05-90) [NBP2-67573] - Analysis of paraffin-embedded human cervix tissue with Rabbit anti-ATF2 [p Thr71] antibody washed with ddH₂O and PBS, and then probed with the primary antibody at 1/200 dilution for 1 hour at room temperature. The detection was performed using an HRP conjugated compact polymer system. DAB was used as the chromogen. Tissues were counterstained with hematoxylin and mounted with DPX.



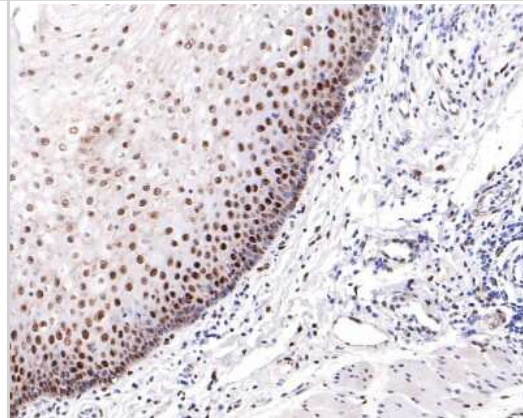
Immunohistochemistry-Paraffin: ATF2 [p Thr71] Antibody (SC05-90) [NBP2-67573] - Analysis of paraffin-embedded human skin tissue with Rabbit anti-ATF2 [p Thr71] antibody washed with ddH₂O and PBS, and then probed with the primary antibody at 1/200 dilution for 1 hour at room temperature. The detection was performed using an HRP conjugated compact polymer system. DAB was used as the chromogen. Tissues were counterstained with hematoxylin and mounted with DPX.



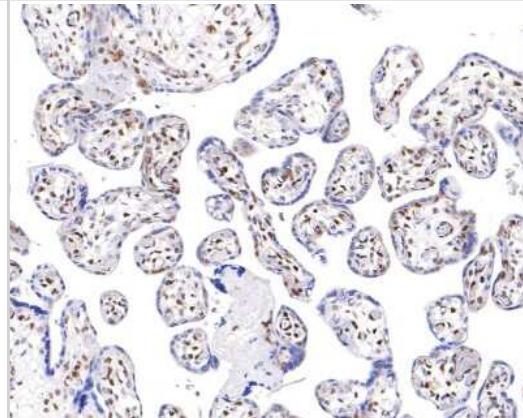
Immunohistochemistry-Paraffin: ATF2 [p Thr71] Antibody (SC05-90) [NBP2-67573] - Analysis of paraffin-embedded human breast tissue with Rabbit anti-ATF2 [p Thr71] antibody washed with ddH₂O and PBS, and then probed with the primary antibody at 1/200 dilution for 1 hour at room temperature. The detection was performed using an HRP conjugated compact polymer system. DAB was used as the chromogen. Tissues were counterstained with hematoxylin and mounted with DPX.



Immunohistochemistry-Paraffin: ATF2 [p Thr71] Antibody (SC05-90) [NBP2-67573] - Analysis of paraffin-embedded human esophagus tissue with Rabbit anti-ATF2 [p Thr71] antibody washed with ddH₂O and PBS, and then probed with the primary antibody at 1/200 dilution for 1 hour at room temperature. The detection was performed using an HRP conjugated compact polymer system. DAB was used as the chromogen. Tissues were counterstained with hematoxylin and mounted with DPX.



Immunohistochemistry-Paraffin: ATF2 [p Thr71] Antibody (SC05-90) [NBP2-67573] - Analysis of paraffin-embedded human placenta tissue with Rabbit anti-ATF2 [p Thr71] antibody washed with ddH₂O and PBS, and then probed with the primary antibody at 1/200 dilution for 1 hour at room temperature. The detection was performed using an HRP conjugated compact polymer system. DAB was used as the chromogen. Tissues were counterstained with hematoxylin and mounted with DPX.





Novus Biologicals USA

10730 E. Briarwood Avenue
Centennial, CO 80112
USA
Phone: 303.730.1950
Toll Free: 1.888.506.6887
Fax: 303.730.1966
nb-customerservice@bio-techne.com

Bio-Techne Canada

21 Canmotor Ave
Toronto, ON M8Z 4E6
Canada
Phone: 905.827.6400
Toll Free: 855.668.8722
Fax: 905.827.6402
canada.inquires@bio-techne.com

Bio-Techne Ltd

19 Barton Lane
Abingdon Science Park
Abingdon, OX14 3NB, United Kingdom
Phone: (44) (0) 1235 529449
Free Phone: 0800 37 34 15
Fax: (44) (0) 1235 533420
info.EMEA@bio-techne.com

General Contact Information

www.novusbio.com
Technical Support: nb-technical@bio-
techne.com
Orders: nb-customerservice@bio-techne.com
General: novus@novusbio.com

Limitations

This product is for research use only and is not approved for use in humans or in clinical diagnosis. Primary Antibodies are guaranteed for 1 year from date of receipt.

For more information on our 100% guarantee, please visit www.novusbio.com/guarantee

Earn gift cards/discounts by submitting a review: www.novusbio.com/reviews/submit/NBP2-67573

Earn gift cards/discounts by submitting a publication using this product:
www.novusbio.com/publications

