

Product Datasheet

Cytokeratin 16 Antibody (SC52-09) NBP2-67559

Unit Size: 100 ul

Store at 4C short term. Aliquot and store at -20C long term. Avoid freeze-thaw cycles.

www.novusbio.com



technical@novusbio.com

Protocols, Publications, Related Products, Reviews, Research Tools and Images at:
www.novusbio.com/NBP2-67559

Updated 10/23/2024 v.20.1

Earn rewards for product
reviews and publications.

Submit a publication at www.novusbio.com/publications

Submit a review at www.novusbio.com/reviews/destination/NBP2-67559



NBP2-67559**Cytokeratin 16 Antibody (SC52-09)**

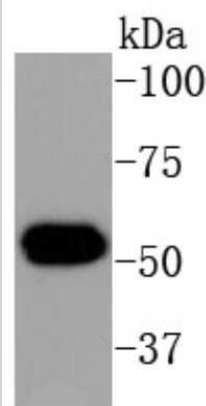
Product Information	
Unit Size	100 ul
Concentration	1 mg/ml
Storage	Store at 4C short term. Aliquot and store at -20C long term. Avoid freeze-thaw cycles.
Clonality	Monoclonal
Clone	SC52-09
Preservative	0.05% Sodium Azide
Isotype	IgG
Purity	Protein A purified
Buffer	TBS (pH7.4), 0.05% BSA, 40% Glycerol

Product Description	
Host	Rabbit
Gene ID	3868
Gene Symbol	KRT16
Species	Human
Immunogen	Synthetic peptide within huamn Cytokeratin 16 aa 27-75 / 473. (SwissProt: P08779 Human)

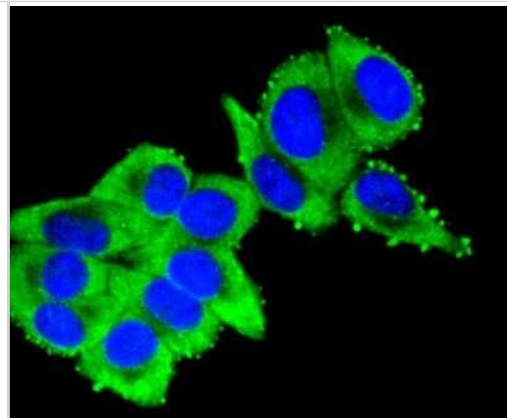
Product Application Details	
Applications	Western Blot, Flow Cytometry, Immunocytochemistry/ Immunofluorescence, Immunohistochemistry, Immunohistochemistry-Paraffin
Recommended Dilutions	Western Blot 1:500-1:2000, Flow Cytometry 1:50-1:100, Immunohistochemistry, Immunocytochemistry/ Immunofluorescence 1:50-1:200, Immunohistochemistry-Paraffin 1:50-1:200

Images

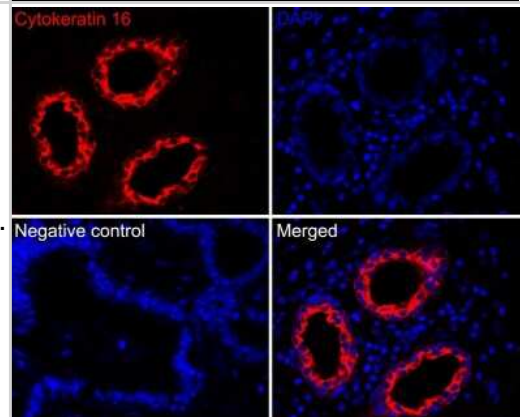
Western Blot: Cytokeratin 16 Antibody (SC52-09) [NBP2-67559] - Analysis of Cytokeratin 16 on human skin lysates using anti-Cytokeratin 16 antibody at 1/1,000 dilution.



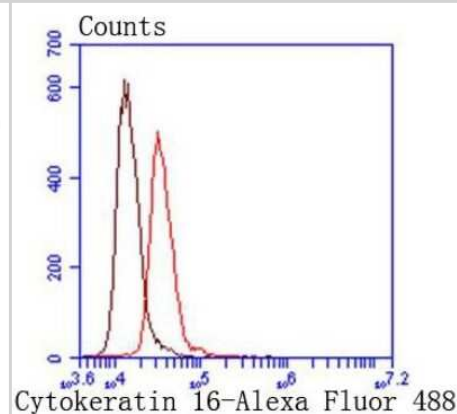
Immunocytochemistry/Immunofluorescence: Cytokeratin 16 Antibody (SC52-09) [NBP2-67559] - Staining Cytokeratin 16 in HepG2 cells (green). The nuclear counter stain is DAPI (blue). Cells were fixed in paraformaldehyde, permeabilised with 0.25% Triton X100/PBS.



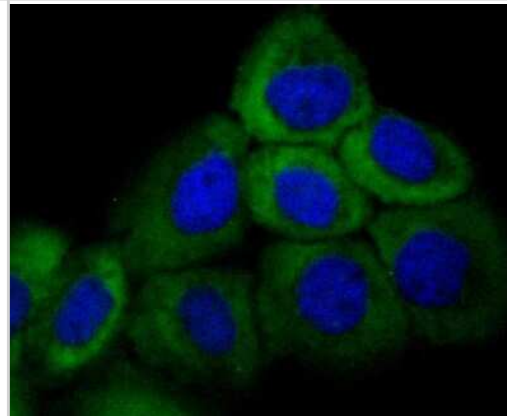
Immunohistochemistry-Paraffin: Cytokeratin 16 Antibody (SC52-09) [NBP2-67559] - Immunofluorescence analysis of paraffin-embedded human breast tissue labeling Cytokeratin 16 with Rabbit anti-Cytokeratin 16 antibody washed with PBS, and then probed with the primary antibody (red) at 1/200 dilution overnight at 4 , washed with PBS. Goat Anti-Rabbit IgG H&L (iFluor(TM) 594) was used as the secondary antibody at 1/1,000 dilution. Nuclei were counterstained with DAPI (blue).



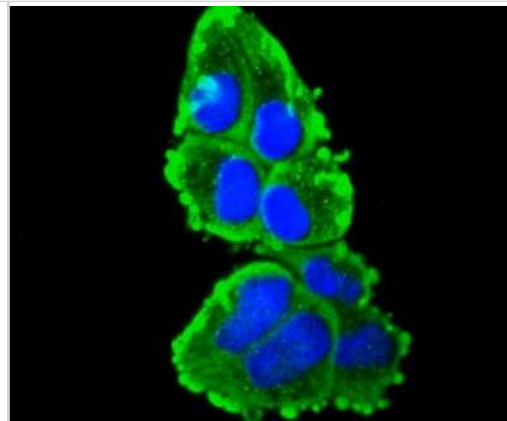
Flow Cytometry: Cytokeratin 16 Antibody (SC52-09) [NBP2-67559] - Analysis of HepG2 cells with Cytokeratin 16 antibody at 1/50 dilution (red) compared with an unlabelled control (cells without incubation with primary antibody; black). Alexa Fluor 488-conjugated goat anti rabbit IgG was used as the secondary antibody.



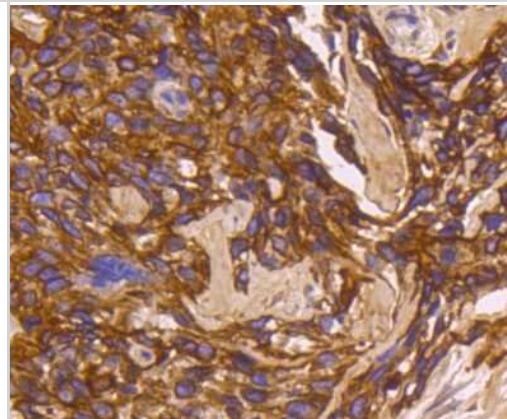
Immunocytochemistry/Immunofluorescence: Cytokeratin 16 Antibody (SC52-09) [NBP2-67559] - Staining Cytokeratin 16 in A431 cells (green). The nuclear counter stain is DAPI (blue). Cells were fixed in paraformaldehyde, permeabilised with 0.25% Triton X100/PBS.



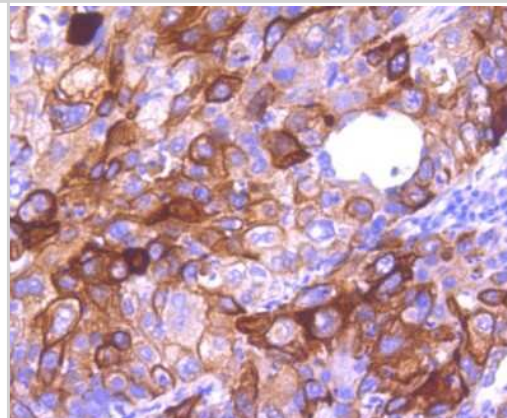
Immunocytochemistry/Immunofluorescence: Cytokeratin 16 Antibody (SC52-09) [NBP2-67559] - Staining Cytokeratin 16 in Hela cells (green). The nuclear counter stain is DAPI (blue). Cells were fixed in paraformaldehyde, permeabilised with 0.25% Triton X100/PBS.



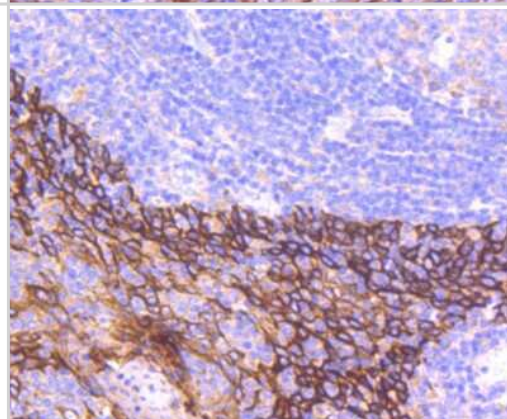
Immunohistochemistry-Paraffin: Cytokeratin 16 Antibody (SC52-09) [NBP2-67559] - Analysis of paraffin-embedded human breast carcinoma tissue using anti-Cytokeratin 16 antibody. Counter stained with hematoxylin.



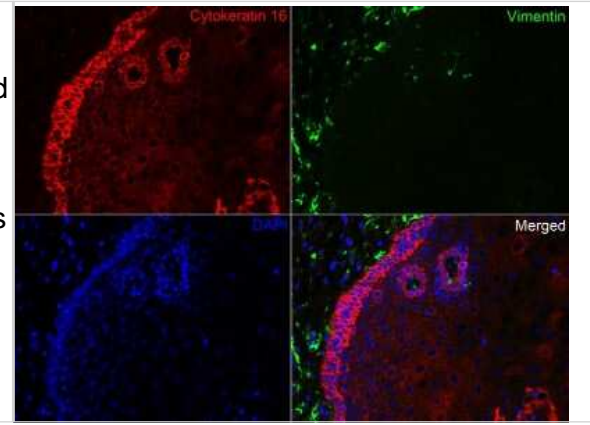
Immunohistochemistry-Paraffin: Cytokeratin 16 Antibody (SC52-09) [NBP2-67559] - Analysis of paraffin-embedded human lung cancer tissue using anti-Cytokeratin 16 antibody. Counter stained with hematoxylin.



Immunohistochemistry-Paraffin: Cytokeratin 16 Antibody (SC52-09) [NBP2-67559] - Analysis of paraffin-embedded human tonsil tissue using anti-Cytokeratin 16 antibody. Counter stained with hematoxylin.



Immunohistochemistry-Paraffin: Cytokeratin 16 Antibody (SC52-09) [NBP2-67559] - Immunofluorescence analysis of paraffin-embedded human esophagus tissue labeling Cytokeratin 16 (washed with PBS. And then probed with the primary antibodies Cytokeratin 16 (red) at 1/200 dilution and Vimentin (green) at 1/400 dilution at +4 overnight, washed with PBS. Goat Anti-Rabbit IgG H&L (iFluor(TM) 594) and Goat Anti-Mouse IgG H&L (iFluor(TM) 488) were used as the secondary antibodies at 1/1,000 dilution. Nuclei were counterstained with DAPI (blue).





Novus Biologicals USA

10730 E. Briarwood Avenue
Centennial, CO 80112
USA
Phone: 303.730.1950
Toll Free: 1.888.506.6887
Fax: 303.730.1966
nb-customerservice@bio-techne.com

Bio-Techne Canada

21 Canmotor Ave
Toronto, ON M8Z 4E6
Canada
Phone: 905.827.6400
Toll Free: 855.668.8722
Fax: 905.827.6402
canada.inquires@bio-techne.com

Bio-Techne Ltd

19 Barton Lane
Abingdon Science Park
Abingdon, OX14 3NB, United Kingdom
Phone: (44) (0) 1235 529449
Free Phone: 0800 37 34 15
Fax: (44) (0) 1235 533420
info.EMEA@bio-techne.com

General Contact Information

www.novusbio.com
Technical Support: nb-technical@bio-techne.com
Orders: nb-customerservice@bio-techne.com
General: novus@novusbio.com

Products Related to NBP2-67559

HAF008	Goat anti-Rabbit IgG Secondary Antibody [HRP]
NB7160	Goat anti-Rabbit IgG (H+L) Secondary Antibody [HRP]
NBP2-24891	Rabbit IgG Isotype Control
NBP2-51613-0.1mg	Recombinant Human Cytokeratin 16 His Protein

Limitations

This product is for research use only and is not approved for use in humans or in clinical diagnosis. Primary Antibodies are guaranteed for 1 year from date of receipt.

For more information on our 100% guarantee, please visit www.novusbio.com/guarantee

Earn gift cards/discounts by submitting a review: www.novusbio.com/reviews/submit/NBP2-67559

Earn gift cards/discounts by submitting a publication using this product:
www.novusbio.com/publications

