

Product Datasheet

Tubulin Beta 2C Antibody (ST52-04) NBP2-67520

Unit Size: 100 ul

Store at 4C short term. Aliquot and store at -20C long term. Avoid freeze-thaw cycles.

www.novusbio.com



technical@novusbio.com

Protocols, Publications, Related Products, Reviews, Research Tools and Images at:
www.novusbio.com/NBP2-67520

Updated 1/3/2023 v.20.1

Earn rewards for product
reviews and publications.

Submit a publication at www.novusbio.com/publications

Submit a review at www.novusbio.com/reviews/destination/NBP2-67520



NBP2-67520

Tubulin Beta 2C Antibody (ST52-04)

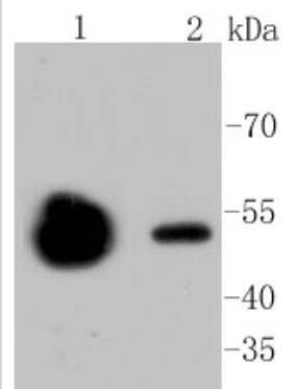
Product Information	
Unit Size	100 ul
Concentration	1 mg/ml
Storage	Store at 4C short term. Aliquot and store at -20C long term. Avoid freeze-thaw cycles.
Clonality	Monoclonal
Clone	ST52-04
Preservative	0.05% Sodium Azide
Isotype	IgG
Purity	Protein A purified
Buffer	TBS (pH7.4), 0.05% BSA, 40% Glycerol

Product Description	
Host	Rabbit
Gene Symbol	TUBB4B
Species	Human, Mouse, Rat
Immunogen	Synthetic peptide within Human Tubulin Beta 2C aa 407-445 / 445. (SwissProt: P68371 Human; SwissProt: Q13885 Human; SwissProt: Q9BVA1 Human; SwissProt: P68372 Mouse; SwissProt: Q7TMM9 Mouse; SwissProt: Q9CWF2 Mouse; SwissProt: P85108 Rat; SwissProt: Q3KRE8 Rat; SwissProt: Q6P9T8 Rat)

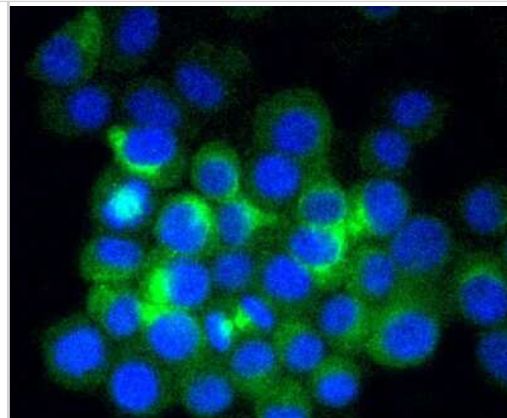
Product Application Details	
Applications	Western Blot, Immunocytochemistry/ Immunofluorescence, Immunohistochemistry, Immunohistochemistry-Paraffin, Immunoprecipitation
Recommended Dilutions	Western Blot 1:1000-1:5000, Immunohistochemistry, Immunocytochemistry/ Immunofluorescence 1:50-1:200, Immunoprecipitation, Immunohistochemistry-Paraffin 1:50-1:200

Images

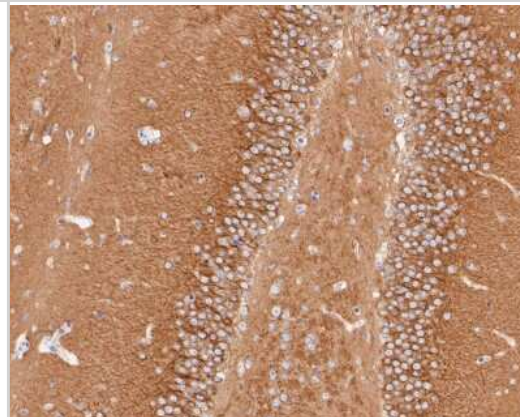
Western Blot: Tubulin Beta 2C Antibody (ST52-04) [NBP2-67520] - Analysis of beta II Tubulin on different lysates using anti-beta II Tubulin antibody at 1/1,000 dilution. Positive control: Lane 1: Mouse brain Lane 2: Mouse kidney



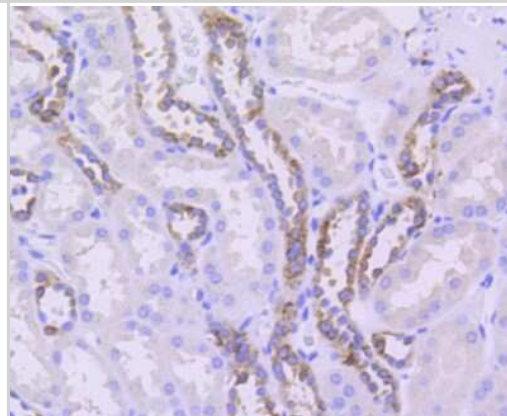
Immunocytochemistry/Immunofluorescence: Tubulin Beta 2C Antibody (ST52-04) [NBP2-67520] - Staining beta II Tubulin in N2A cells (green). The nuclear counter stain is DAPI (blue). Cells were fixed in paraformaldehyde, permeabilised with 0.25% Triton X100/PBS.



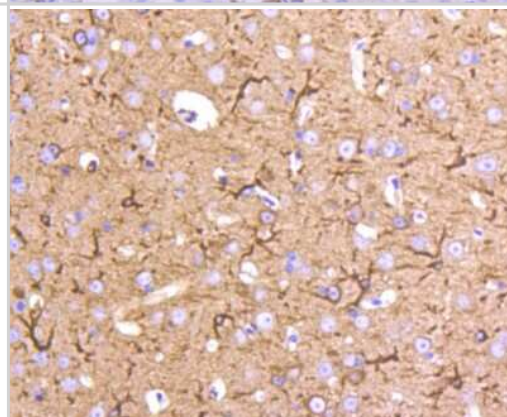
Immunohistochemistry-Paraffin: Tubulin Beta 2C Antibody (ST52-04) [NBP2-67520] - Immunohistochemical analysis of paraffin-embedded rat brain tissue using anti-Tubulin Beta 2C antibody. The section was pre-treated using heat mediated antigen retrieval with Tris-EDTA buffer (pH 8.0-8.4) for 20 minutes. The tissues were blocked in 5% BSA for 30 minutes at room temperature, washed with ddH₂O and PBS, and then probed with the primary antibody (ET1609-48, 1/50) for 30 minutes at room temperature. The detection was performed using an HRP conjugated compact polymer system. DAB was used as the chromogen. Tissues were counterstained with hematoxylin and mounted with DPX.



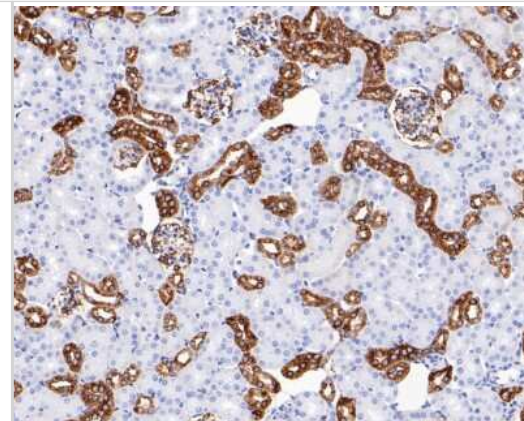
Immunohistochemistry-Paraffin: Tubulin Beta 2C Antibody (ST52-04) [NBP2-67520] - Analysis of paraffin-embedded human kidney tissue using anti-beta II Tubulin antibody. Counter stained with hematoxylin.



Immunohistochemistry-Paraffin: Tubulin Beta 2C Antibody (ST52-04) [NBP2-67520] - Analysis of paraffin-embedded mouse brain tissue using anti-beta II Tubulin antibody. Counter stained with hematoxylin.



Immunohistochemistry-Paraffin: Tubulin Beta 2C Antibody (ST52-04) [NBP2-67520] - Immunohistochemical analysis of paraffin-embedded mouse kidney tissue using anti-Tubulin Beta 2C antibody. The section was pre-treated using heat mediated antigen retrieval with Tris-EDTA buffer (pH 8.0-8.4) for 20 minutes. The tissues were blocked in 5% BSA for 30 minutes at room temperature, washed with ddH₂O and PBS, and then probed with the primary antibody (ET1609-48, 1/50) for 30 minutes at room temperature. The detection was performed using an HRP conjugated compact polymer system. DAB was used as the chromogen. Tissues were counterstained with hematoxylin and mounted with DPX.





Novus Biologicals USA

10730 E. Briarwood Avenue
Centennial, CO 80112
USA
Phone: 303.730.1950
Toll Free: 1.888.506.6887
Fax: 303.730.1966
nb-customerservice@bio-techne.com

Bio-Techne Canada

21 Canmotor Ave
Toronto, ON M8Z 4E6
Canada
Phone: 905.827.6400
Toll Free: 855.668.8722
Fax: 905.827.6402
canada.inquires@bio-techne.com

Bio-Techne Ltd

19 Barton Lane
Abingdon Science Park
Abingdon, OX14 3NB, United Kingdom
Phone: (44) (0) 1235 529449
Free Phone: 0800 37 34 15
Fax: (44) (0) 1235 533420
info.EMEA@bio-techne.com

General Contact Information

www.novusbio.com
Technical Support: nb-technical@bio-techne.com
Orders: nb-customerservice@bio-techne.com
General: novus@novusbio.com

Limitations

This product is for research use only and is not approved for use in humans or in clinical diagnosis. Primary Antibodies are guaranteed for 1 year from date of receipt.

For more information on our 100% guarantee, please visit www.novusbio.com/guarantee

Earn gift cards/discounts by submitting a review: www.novusbio.com/reviews/submit/NBP2-67520

Earn gift cards/discounts by submitting a publication using this product:
www.novusbio.com/publications

