

Product Datasheet

PPP2CB [p Tyr307] Antibody (ST49-05) NBP2-67512

Unit Size: 100 ul

Store at 4C short term. Aliquot and store at -20C long term. Avoid freeze-thaw cycles.

www.novusbio.com



technical@novusbio.com

Protocols, Publications, Related Products, Reviews, Research Tools and Images at:
www.novusbio.com/NBP2-67512

Updated 1/3/2023 v.20.1

Earn rewards for product
reviews and publications.

Submit a publication at www.novusbio.com/publications

Submit a review at www.novusbio.com/reviews/destination/NBP2-67512



NBP2-67512

PPP2CB [p Tyr307] Antibody (ST49-05)

Product Information

Unit Size	100 ul
Concentration	1 mg/ml
Storage	Store at 4C short term. Aliquot and store at -20C long term. Avoid freeze-thaw cycles.
Clonality	Monoclonal
Clone	ST49-05
Preservative	0.05% Sodium Azide
Isotype	IgG
Purity	Protein A purified
Buffer	TBS (pH7.4), 0.05% BSA, 40% Glycerol

Product Description

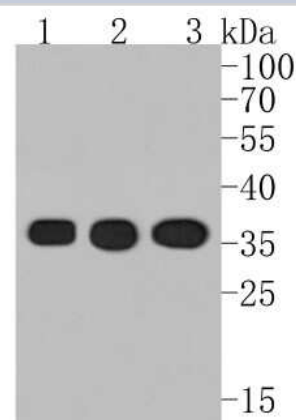
Host	Rabbit
Gene Symbol	PPP2CB
Species	Human, Mouse, Rat
Immunogen	Synthetic phospho-peptide corresponding to residues surrounding Tyr307 of Human PPP2CB aa 260-309 / 309. (SwissProt: P62714 Human; SwissProt: P67775 Human; SwissProt: P62715 Mouse; SwissProt: P63330 Mouse; SwissProt: P62716 Rat; SwissProt: P63331 Rat)

Product Application Details

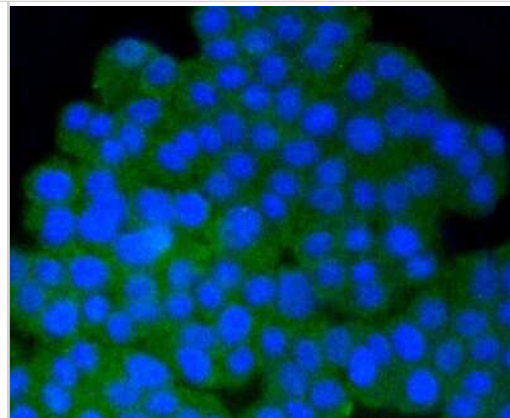
Applications	Western Blot, Immunocytochemistry/ Immunofluorescence, Immunohistochemistry, Immunohistochemistry-Paraffin, Immunoprecipitation
Recommended Dilutions	Western Blot 1:1000-1:5000, Immunohistochemistry, Immunocytochemistry/ Immunofluorescence 1:50-1:200, Immunoprecipitation, Immunohistochemistry-Paraffin 1:50-1:200

Images

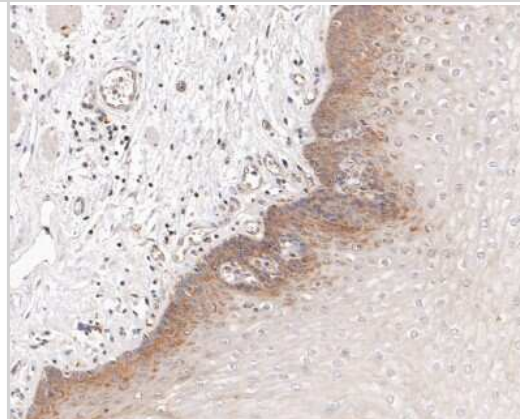
Western Blot: PPP2CB [p Tyr307] Antibody (ST49-05) [NBP2-67512] - Analysis of PPP2CB [p Tyr307] on different lysates. Proteins were transferred to a PVDF membrane and blocked with 5% BSA in PBS for 1 hour at room temperature. The primary antibody (1/500) was used in 5% BSA at room temperature for 2 hours. Goat Anti-Rabbit IgG - HRP Secondary Antibody at 1:5,000 dilution was used for 1 hour at room temperature. Positive control: Lane 1: F9 cell lysate Lane 2: PC-12 cell lysate Lane 3: A431 cell lysate



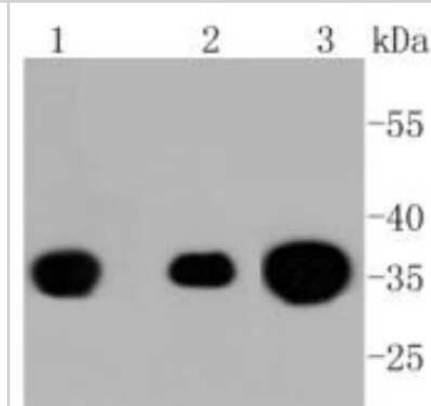
Immunocytochemistry/Immunofluorescence: PPP2CB [p Tyr307] Antibody (ST49-05) [NBP2-67512] - Staining Phospho-PP2A(pY307) in PC12 cells (green). The nuclear counter stain is DAPI (blue). Cells were fixed in paraformaldehyde, permeabilised with 0.25% Triton X100/PBS.



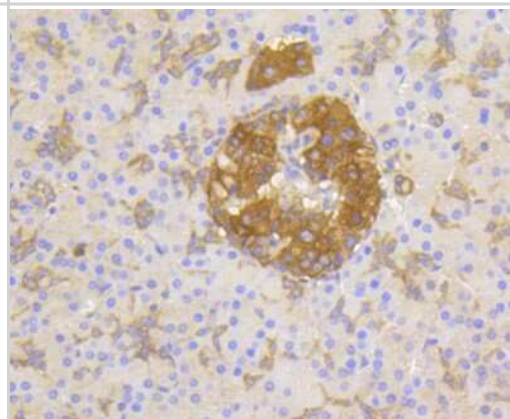
Immunohistochemistry-Paraffin: PPP2CB [p Tyr307] Antibody (ST49-05) [NBP2-67512] - Analysis of paraffin-embedded human esophagus tissue with Rabbit anti-PPP2CB [p Tyr307] antibody washed with ddH2O and PBS, and then probed with the primary antibody at 1/200 dilution for 1 hour at room temperature. The detection was performed using an HRP conjugated compact polymer system. DAB was used as the chromogen. Tissues were counterstained with hematoxylin and mounted with DPX.



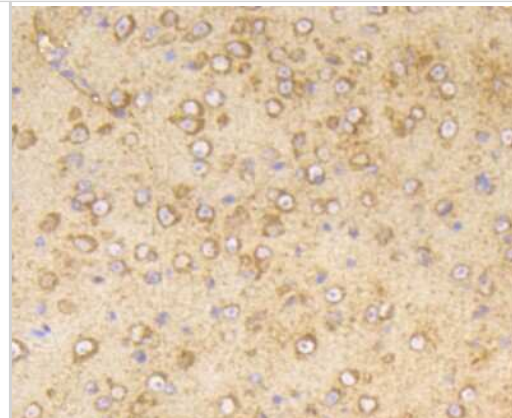
Western Blot: PPP2CB [p Tyr307] Antibody (ST49-05) [NBP2-67512] - Analysis of Phospho-PP2A(pY307) on different lysates using anti-Phospho-PP2A(pY307) antibody at 1/1,000 dilution. Positive control: Lane 1: A431 Lane 2: F9 Lane 3: PC12



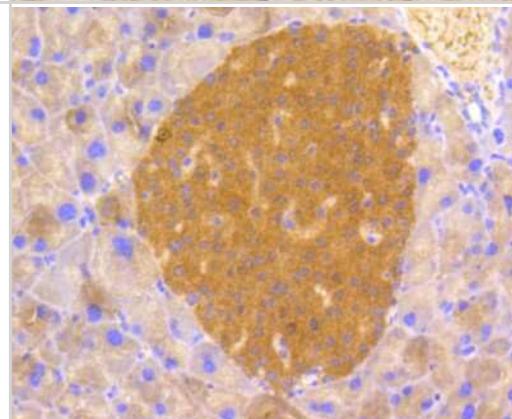
Immunohistochemistry-Paraffin: PPP2CB [p Tyr307] Antibody (ST49-05) [NBP2-67512] - Analysis of paraffin-embedded human pancreas tissue using anti-Phospho-PP2A(pY307) antibody. Counter stained with hematoxylin.



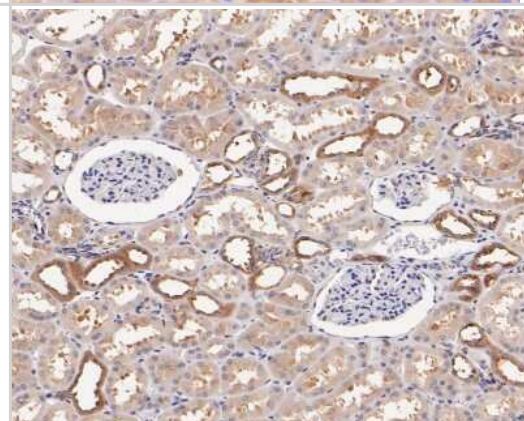
Immunohistochemistry-Paraffin: PPP2CB [p Tyr307] Antibody (ST49-05) [NBP2-67512] - Analysis of paraffin-embedded mouse brain tissue using anti-Phospho-PP2A(pY307) antibody. Counter stained with hematoxylin.



Immunohistochemistry-Paraffin: PPP2CB [p Tyr307] Antibody (ST49-05) [NBP2-67512] - Analysis of paraffin-embedded mouse pancreas tissue using anti-Phospho-PP2A(pY307) antibody. Counter stained with hematoxylin.



Immunohistochemistry-Paraffin: PPP2CB [p Tyr307] Antibody (ST49-05) [NBP2-67512] - Analysis of paraffin-embedded human kidney tissue with Rabbit anti-Phospho-PP2A(Y307) antibody washed with ddH₂O and PBS, and then probed with the primary antibody at 1/200 dilution for 1 hour at room temperature. The detection was performed using an HRP conjugated compact polymer system. DAB was used as the chromogen. Tissues were counterstained with hematoxylin and mounted with DPX.





Novus Biologicals USA

10730 E. Briarwood Avenue
Centennial, CO 80112
USA
Phone: 303.730.1950
Toll Free: 1.888.506.6887
Fax: 303.730.1966
nb-customerservice@bio-techne.com

Bio-Techne Canada

21 Canmotor Ave
Toronto, ON M8Z 4E6
Canada
Phone: 905.827.6400
Toll Free: 855.668.8722
Fax: 905.827.6402
canada.inquires@bio-techne.com

Bio-Techne Ltd

19 Barton Lane
Abingdon Science Park
Abingdon, OX14 3NB, United Kingdom
Phone: (44) (0) 1235 529449
Free Phone: 0800 37 34 15
Fax: (44) (0) 1235 533420
info.EMEA@bio-techne.com

General Contact Information

www.novusbio.com
Technical Support: nb-technical@bio-
techne.com
Orders: nb-customerservice@bio-techne.com
General: novus@novusbio.com

Limitations

This product is for research use only and is not approved for use in humans or in clinical diagnosis. Primary Antibodies are guaranteed for 1 year from date of receipt.

For more information on our 100% guarantee, please visit www.novusbio.com/guarantee

Earn gift cards/discounts by submitting a review: www.novusbio.com/reviews/submit/NBP2-67512

Earn gift cards/discounts by submitting a publication using this product:
www.novusbio.com/publications

