

# Product Datasheet

## p27/Kip1 Antibody (SU37-04)

### NBP2-67485

Unit Size: 100 ul

Store at 4C short term. Aliquot and store at -20C long term. Avoid freeze-thaw cycles.

[www.novusbio.com](http://www.novusbio.com)



[technical@novusbio.com](mailto:technical@novusbio.com)

Protocols, Publications, Related Products, Reviews, Research Tools and Images at:  
[www.novusbio.com/NBP2-67485](http://www.novusbio.com/NBP2-67485)

Updated 1/3/2023 v.20.1

Earn rewards for product  
reviews and publications.

Submit a publication at [www.novusbio.com/publications](http://www.novusbio.com/publications)

Submit a review at [www.novusbio.com/reviews/destination/NBP2-67485](http://www.novusbio.com/reviews/destination/NBP2-67485)



**NBP2-67485**

p27/Kip1 Antibody (SU37-04)

**Product Information**

<b>Unit Size</b>	100 ul
<b>Concentration</b>	1 mg/ml
<b>Storage</b>	Store at 4C short term. Aliquot and store at -20C long term. Avoid freeze-thaw cycles.
<b>Clonality</b>	Monoclonal
<b>Clone</b>	SU37-04
<b>Preservative</b>	0.05% Sodium Azide
<b>Isotype</b>	IgG
<b>Purity</b>	Protein A purified
<b>Buffer</b>	TBS (pH7.4), 0.05% BSA, 40% Glycerol

**Product Description**

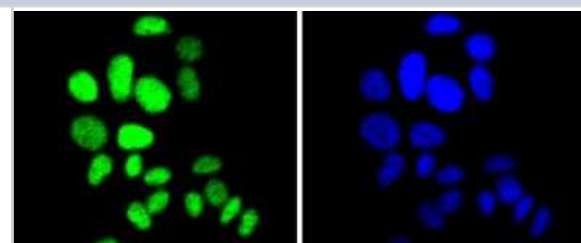
<b>Host</b>	Rabbit
<b>Gene Symbol</b>	CDKN1B
<b>Species</b>	Human, Mouse, Rat
<b>Immunogen</b>	Synthetic peptide within Human p27/Kip1 aa 149-198 / 198. (SwissProt: P46527 Human; SwissProt: P46414 Mouse; Unigene:29897 Rat)

**Product Application Details**

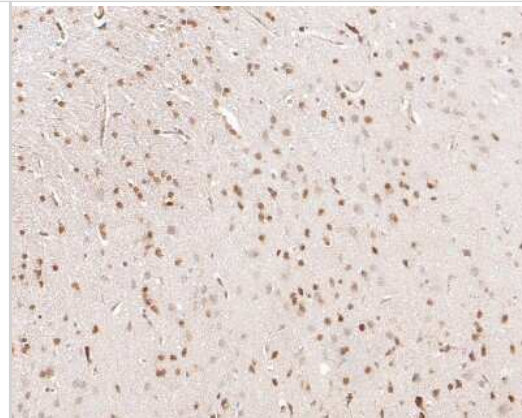
<b>Applications</b>	Western Blot, Flow Cytometry, Immunocytochemistry/ Immunofluorescence, Immunohistochemistry, Immunohistochemistry-Paraffin, Immunoprecipitation
<b>Recommended Dilutions</b>	Western Blot 1:500-1:1000, Flow Cytometry 1:50-1:100, Immunohistochemistry, Immunocytochemistry/ Immunofluorescence 1:100-1:500, Immunoprecipitation, Immunohistochemistry-Paraffin 1:100-1:500

**Images**

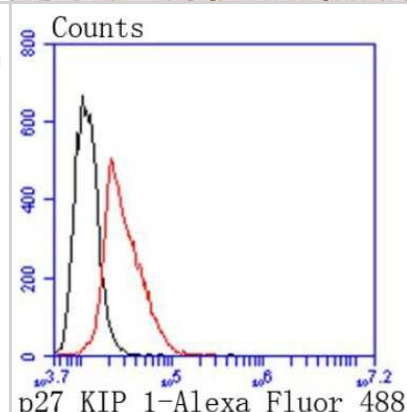
Immunocytochemistry/Immunofluorescence: p27/Kip1 Antibody (SU37-04) [NBP2-67485] - Staining p27 KIP 1 in MCF-7 cells (green). The nuclear counter stain is DAPI (blue). Cells were fixed in paraformaldehyde, permeabilised with 0.25% Triton X100/PBS.



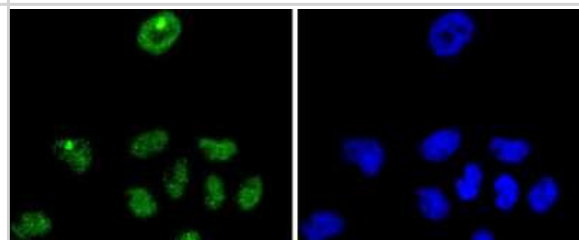
**Immunohistochemistry-Paraffin: p27/Kip1 Antibody (SU37-04) [NBP2-67485]** - Immunohistochemical analysis of paraffin-embedded rat brain tissue using anti-p27/Kip1 antibody. The section was pre-treated using heat mediated antigen retrieval with sodium citrate buffer (pH 6.0) for 20 minutes. The tissues were blocked in 5% BSA for 30 minutes at room temperature, washed with ddH<sub>2</sub>O and PBS, and then probed with the primary antibody (ET1608-61, 1/50) for 30 minutes at room temperature. The detection was performed using an HRP conjugated compact polymer system. DAB was used as the chromogen. Tissues were counterstained with hematoxylin and mounted with DPX.



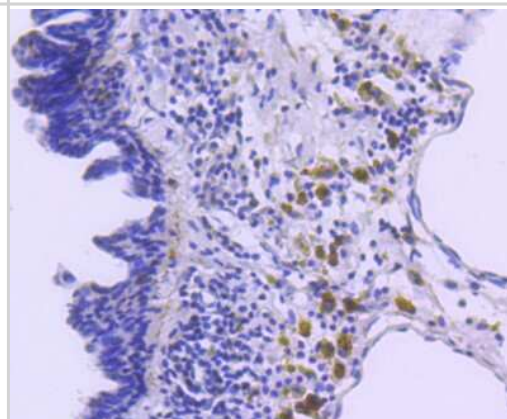
**Flow Cytometry: p27/Kip1 Antibody (SU37-04) [NBP2-67485]** - Analysis of Hela cells with p27 KIP 1 antibody at 1/50 dilution (red) compared with an unlabelled control (cells without incubation with primary antibody; black). Alexa Fluor 488-conjugated goat anti rabbit IgG was used as the secondary antibody.



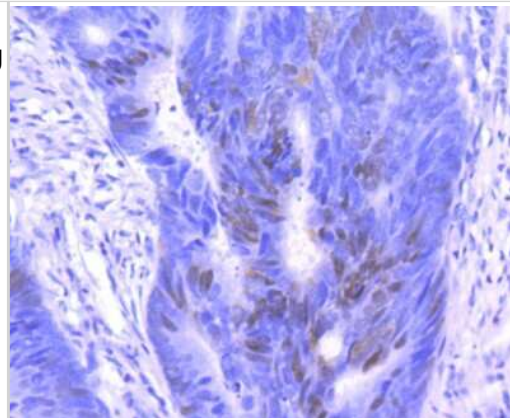
**Immunocytochemistry/Immunofluorescence: p27/Kip1 Antibody (SU37-04) [NBP2-67485]** - Staining p27 KIP 1 in A431 cells (green). The nuclear counter stain is DAPI (blue). Cells were fixed in paraformaldehyde, permeabilised with 0.25% Triton X100/PBS.



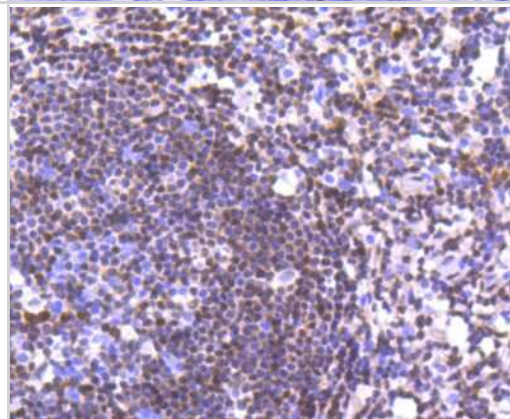
**Immunohistochemistry-Paraffin: p27/Kip1 Antibody (SU37-04) [NBP2-67485]** - Analysis of paraffin-embedded human breast carcinoma tissue using anti-p27 KIP 1 antibody. Counter stained with hematoxylin.



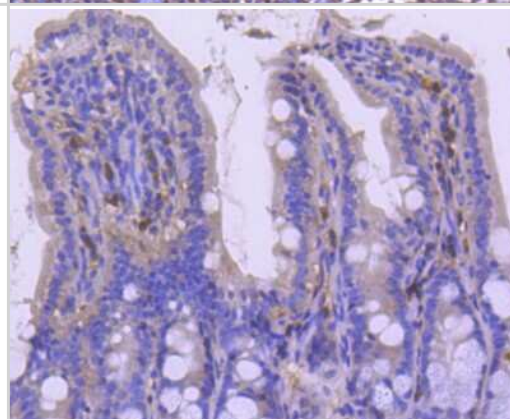
Immunohistochemistry-Paraffin: p27/Kip1 Antibody (SU37-04) [NBP2-67485] - Analysis of paraffin-embedded human colon cancer tissue using anti-p27 KIP 1 antibody. Counter stained with hematoxylin.



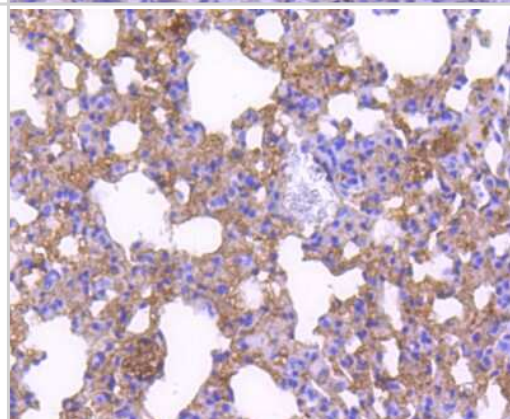
Immunohistochemistry-Paraffin: p27/Kip1 Antibody (SU37-04) [NBP2-67485] - Analysis of paraffin-embedded human tonsil tissue using anti-p27 KIP 1 antibody. Counter stained with hematoxylin.



Immunohistochemistry-Paraffin: p27/Kip1 Antibody (SU37-04) [NBP2-67485] - Analysis of paraffin-embedded mouse colon tissue using anti-p27 KIP 1 antibody. Counter stained with hematoxylin.

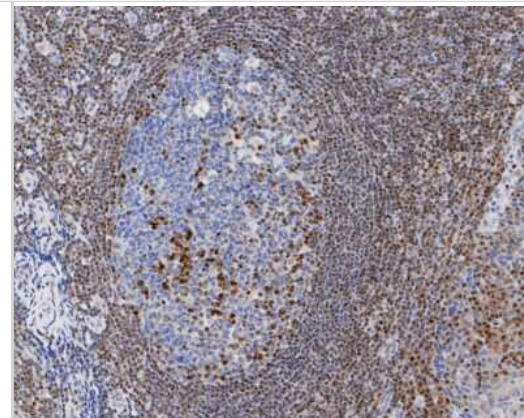


Immunohistochemistry-Paraffin: p27/Kip1 Antibody (SU37-04) [NBP2-67485] - Analysis of paraffin-embedded mouse lung tissue using anti-p27 KIP 1 antibody. Counter stained with hematoxylin.





Immunohistochemistry-Paraffin: p27/Kip1 Antibody (SU37-04) [NBP2-67485] - Immunohistochemical analysis of paraffin-embedded human tonsil tissue using anti-p27/Kip1 antibody. The section was pre-treated using heat mediated antigen retrieval with sodium citrate buffer (pH 6.0) for 20 minutes. The tissues were blocked in 5% BSA for 30 minutes at room temperature, washed with ddH<sub>2</sub>O and PBS, and then probed with the primary antibody (ET1608-61, 1/200) for 30 minutes at room temperature. The detection was performed using an HRP conjugated compact polymer system. DAB was used as the chromogen. Tissues were counterstained with hematoxylin and mounted with DPX.



Immunohistochemistry-Paraffin: p27/Kip1 Antibody (SU37-04) [NBP2-67485] - Immunohistochemical analysis of paraffin-embedded mouse cerebellum tissue using anti-p27/Kip1 antibody. The section was pre-treated using heat mediated antigen retrieval with sodium citrate buffer (pH 6.0) for 20 minutes. The tissues were blocked in 5% BSA for 30 minutes at room temperature, washed with ddH<sub>2</sub>O and PBS, and then probed with the primary antibody (ET1608-61, 1/200) for 30 minutes at room temperature. The detection was performed using an HRP conjugated compact polymer system. DAB was used as the chromogen. Tissues were counterstained with hematoxylin and mounted with DPX.





### **Novus Biologicals USA**

10730 E. Briarwood Avenue  
Centennial, CO 80112  
USA  
Phone: 303.730.1950  
Toll Free: 1.888.506.6887  
Fax: 303.730.1966  
nb-customerservice@bio-techne.com

### **Bio-Techne Canada**

21 Canmotor Ave  
Toronto, ON M8Z 4E6  
Canada  
Phone: 905.827.6400  
Toll Free: 855.668.8722  
Fax: 905.827.6402  
canada.inquires@bio-techne.com

### **Bio-Techne Ltd**

19 Barton Lane  
Abingdon Science Park  
Abingdon, OX14 3NB, United Kingdom  
Phone: (44) (0) 1235 529449  
Free Phone: 0800 37 34 15  
Fax: (44) (0) 1235 533420  
info.EMEA@bio-techne.com

### **General Contact Information**

www.novusbio.com  
Technical Support: nb-technical@bio-  
techne.com  
Orders: nb-customerservice@bio-techne.com  
General: novus@novusbio.com

### **Limitations**

This product is for research use only and is not approved for use in humans or in clinical diagnosis. Primary Antibodies are guaranteed for 1 year from date of receipt.

For more information on our 100% guarantee, please visit [www.novusbio.com/guarantee](http://www.novusbio.com/guarantee)

Earn gift cards/discounts by submitting a review: [www.novusbio.com/reviews/submit/NBP2-67485](http://www.novusbio.com/reviews/submit/NBP2-67485)

Earn gift cards/discounts by submitting a publication using this product:  
[www.novusbio.com/publications](http://www.novusbio.com/publications)

