

# Product Datasheet

## PARP Antibody (SU03-68) NBP2-67482

Unit Size: 100 ul

Store at 4C short term. Aliquot and store at -20C long term. Avoid freeze-thaw cycles.

[www.novusbio.com](http://www.novusbio.com)



[technical@novusbio.com](mailto:technical@novusbio.com)

Protocols, Publications, Related Products, Reviews, Research Tools and Images at:  
[www.novusbio.com/NBP2-67482](http://www.novusbio.com/NBP2-67482)

Updated 1/3/2023 v.20.1

Earn rewards for product  
reviews and publications.

Submit a publication at [www.novusbio.com/publications](http://www.novusbio.com/publications)

Submit a review at [www.novusbio.com/reviews/destination/NBP2-67482](http://www.novusbio.com/reviews/destination/NBP2-67482)



**NBP2-67482**

PARP Antibody (SU03-68)

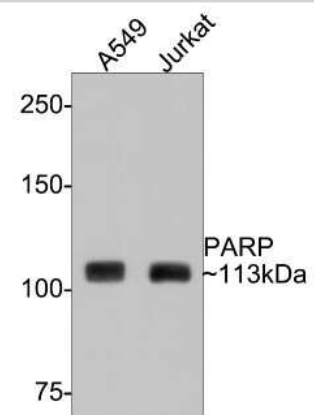
Product Information	
Unit Size	100 ul
Concentration	1 mg/ml
Storage	Store at 4C short term. Aliquot and store at -20C long term. Avoid freeze-thaw cycles.
Clonality	Monoclonal
Clone	SU03-68
Preservative	0.05% Sodium Azide
Isotype	IgG
Purity	Protein A purified
Buffer	TBS (pH7.4), 0.05% BSA, 40% Glycerol

Product Description	
Host	Rabbit
Gene Symbol	PARP1
Species	Human, Mouse, Rat
Immunogen	Synthetic peptide within N-terminal human PARP. (SwissProt: P09874 Human; SwissProt: P11103 Mouse; SwissProt: P27008 Rat)

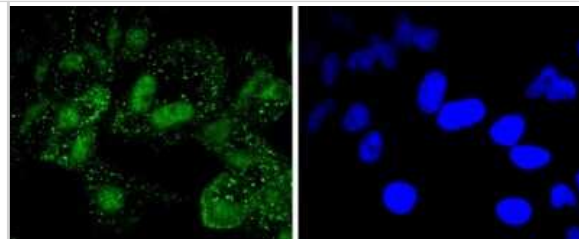
Product Application Details	
Applications	Western Blot, Flow Cytometry, Immunocytochemistry/ Immunofluorescence, Immunohistochemistry, Immunohistochemistry-Paraffin
Recommended Dilutions	Western Blot 1:1000, Flow Cytometry 1:50-1:100, Immunohistochemistry, Immunocytochemistry/ Immunofluorescence 1:50-1:200, Immunohistochemistry-Paraffin 1:500

**Images**

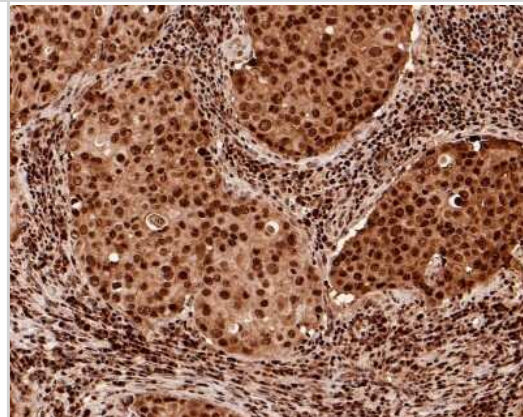
Western Blot: PARP Antibody (SU03-68) [NBP2-67482] - Analysis of PARP on different lysates with Rabbit anti-PARP antibody at 1/500 dilution. Lane 1: A549 cell lysate Lane 2: Jurkat cell lysate Lysates/proteins at 10 ug/Lane. Predicted band size: 113 kDa Observed band size: 113 kDa Exposure time: 1 minute; 6% SDS-PAGE gel. Proteins were transferred to a PVDF membrane and blocked with 5% NFDm/TBST for 1 hour at room temperature. The primary antibody at 1/500 dilution was used in 5% NFDm/TBST at room temperature for 2 hours. Goat Anti-Rabbit IgG - HRP Secondary Antibody at 1:300,000 dilution was used for 1 hour at room temperature.



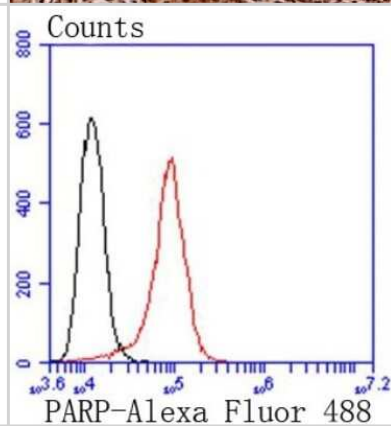
**Immunocytochemistry/Immunofluorescence:** PARP Antibody (SU03-68) [NBP2-67482] - Staining PARP in Hela cells (green). The nuclear counter stain is DAPI (blue). Cells were fixed in paraformaldehyde, permeabilised with 0.25% Triton X100/PBS.



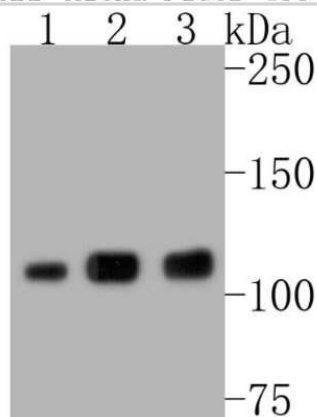
**Immunohistochemistry-Paraffin:** PARP Antibody (SU03-68) [NBP2-67482] - Analysis of paraffin-embedded human breast carcinoma tissue with Rabbit anti-PARP antibody washed with ddH<sub>2</sub>O and PBS, and then probed with the primary antibody at 1/500 dilution for 1 hour at room temperature. The detection was performed using an HRP conjugated compact polymer system. DAB was used as the chromogen. Tissues were counterstained with hematoxylin and mounted with DPX.



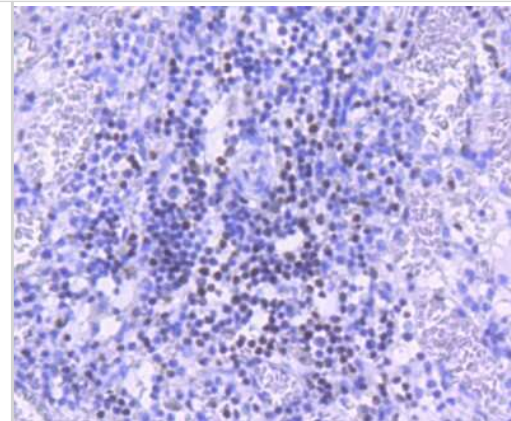
**Flow Cytometry:** PARP Antibody (SU03-68) [NBP2-67482] - Analysis of HeLa cells with PARP antibody at 1/50 dilution (red) compared with an unlabelled control (cells without incubation with primary antibody; black). Alexa Fluor 488-conjugated goat anti rabbit IgG was used as the secondary antibody.



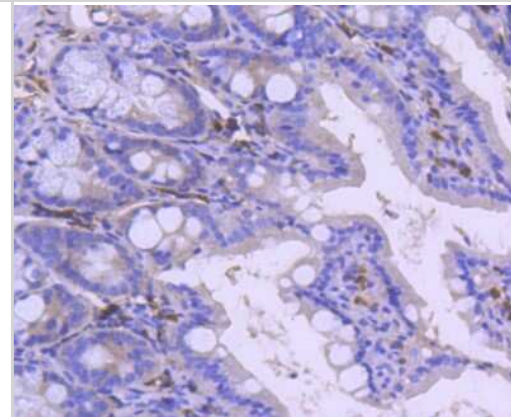
**Western Blot:** PARP Antibody (SU03-68) [NBP2-67482] - Analysis of PARP on different lysates. Proteins were transferred to a PVDF membrane and blocked with 5% BSA in PBS for 1 hour at room temperature. The primary antibody (1/500) was used in 5% BSA at room temperature for 2 hours. Goat Anti-Rabbit IgG - HRP Secondary Antibody at 1:5,000 dilution was used for 1 hour at room temperature. Positive control: Lane 1: A549 cell lysate Lane 2: Jurkat cell lysate Lane 3: HeLa cell lysate



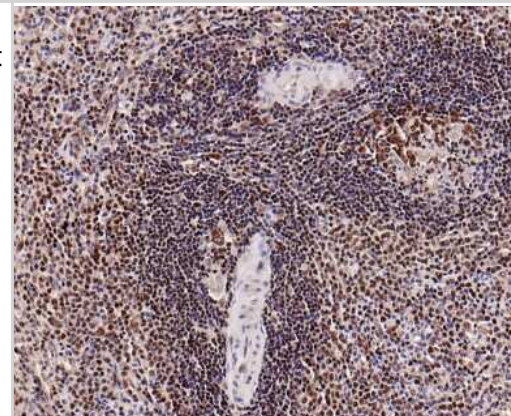
Immunohistochemistry-Paraffin: PARP Antibody (SU03-68) [NBP2-67482] - Analysis of paraffin-embedded human spleen tissue using anti-PARP antibody. Counter stained with hematoxylin.



Immunohistochemistry-Paraffin: PARP Antibody (SU03-68) [NBP2-67482] - Analysis of paraffin-embedded mouse colon tissue using anti-PARP antibody. Counter stained with hematoxylin.



Immunohistochemistry-Paraffin: PARP Antibody (SU03-68) [NBP2-67482] - Analysis of paraffin-embedded human spleen tissue with Rabbit anti-PARP antibody washed with ddH<sub>2</sub>O and PBS, and then probed with the primary antibody at 1/500 dilution for 1 hour at room temperature. The detection was performed using an HRP conjugated compact polymer system. DAB was used as the chromogen. Tissues were counterstained with hematoxylin and mounted with DPX.



Immunohistochemistry-Paraffin: PARP Antibody (SU03-68) [NBP2-67482] - Analysis of paraffin-embedded mouse large intestine tissue with Rabbit anti-PARP antibody washed with ddH<sub>2</sub>O and PBS, and then probed with the primary antibody at 1/500 dilution for 1 hour at room temperature. The detection was performed using an HRP conjugated compact polymer system. DAB was used as the chromogen. Tissues were counterstained with hematoxylin and mounted with DPX.





### **Novus Biologicals USA**

10730 E. Briarwood Avenue  
Centennial, CO 80112  
USA  
Phone: 303.730.1950  
Toll Free: 1.888.506.6887  
Fax: 303.730.1966  
nb-customerservice@bio-techne.com

### **Bio-Techne Canada**

21 Canmotor Ave  
Toronto, ON M8Z 4E6  
Canada  
Phone: 905.827.6400  
Toll Free: 855.668.8722  
Fax: 905.827.6402  
canada.inquires@bio-techne.com

### **Bio-Techne Ltd**

19 Barton Lane  
Abingdon Science Park  
Abingdon, OX14 3NB, United Kingdom  
Phone: (44) (0) 1235 529449  
Free Phone: 0800 37 34 15  
Fax: (44) (0) 1235 533420  
info.EMEA@bio-techne.com

### **General Contact Information**

www.novusbio.com  
Technical Support: nb-technical@bio-techne.com  
Orders: nb-customerservice@bio-techne.com  
General: novus@novusbio.com

### **Limitations**

This product is for research use only and is not approved for use in humans or in clinical diagnosis. Primary Antibodies are guaranteed for 1 year from date of receipt.

For more information on our 100% guarantee, please visit [www.novusbio.com/guarantee](http://www.novusbio.com/guarantee)

Earn gift cards/discounts by submitting a review: [www.novusbio.com/reviews/submit/NBP2-67482](http://www.novusbio.com/reviews/submit/NBP2-67482)

Earn gift cards/discounts by submitting a publication using this product:  
[www.novusbio.com/publications](http://www.novusbio.com/publications)

