

Product Datasheet

Cyclin B1 Antibody (SU33-03)

NBP2-67464

Unit Size: 100 ul

Store at 4C short term. Aliquot and store at -20C long term. Avoid freeze-thaw cycles.

www.novusbio.com



technical@novusbio.com

Protocols, Publications, Related Products, Reviews, Research Tools and Images at:
www.novusbio.com/NBP2-67464

Updated 1/3/2023 v.20.1

Earn rewards for product
reviews and publications.

Submit a publication at www.novusbio.com/publications

Submit a review at www.novusbio.com/reviews/destination/NBP2-67464



NBP2-67464**Cyclin B1 Antibody (SU33-03)****Product Information**

Unit Size	100 ul
Concentration	1 mg/ml
Storage	Store at 4C short term. Aliquot and store at -20C long term. Avoid freeze-thaw cycles.
Clonality	Monoclonal
Clone	SU33-03
Preservative	0.05% Sodium Azide
Isotype	IgG
Purity	Protein A purified
Buffer	TBS (pH7.4), 0.05% BSA, 40% Glycerol

Product Description

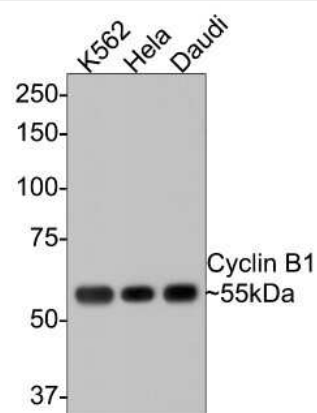
Host	Rabbit
Gene Symbol	CCNB1
Species	Human
Immunogen	Synthetic peptide within Human Cyclin B1 aa 384-433 / 433. (SwissProt: P14635 Human)

Product Application Details

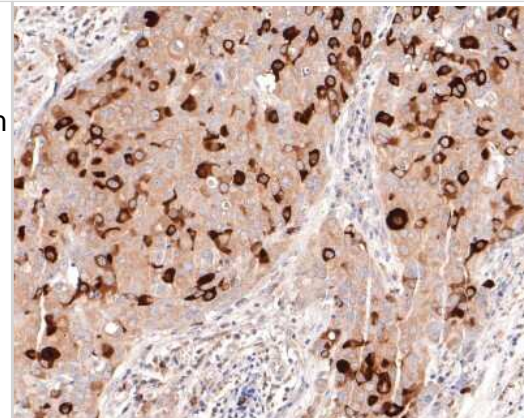
Applications	Western Blot, Immunocytochemistry/ Immunofluorescence, Immunohistochemistry, Immunohistochemistry-Paraffin, Immunoprecipitation
Recommended Dilutions	Western Blot 1:1000-1:5000, Immunohistochemistry, Immunocytochemistry/ Immunofluorescence 1:50-1:200, Immunoprecipitation, Immunohistochemistry-Paraffin 1:50-1:400

Images

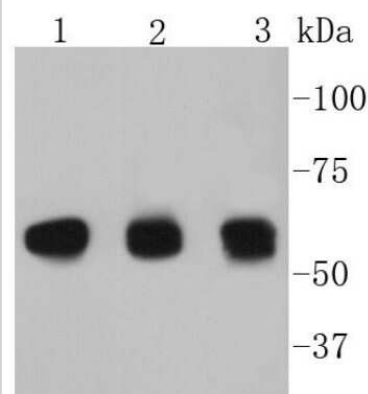
Western Blot: Cyclin B1 Antibody (SU33-03) [NBP2-67464] - Analysis of Cyclin B1 on different lysates with Rabbit anti-Cyclin B1 antibody at 1/500 dilution. Lane 1: K562 cell lysate. Lane 2: Hela cell lysate. Lane 3: Daudi cell lysate. Lysates/proteins at 10 ug/Lane. Predicted band size: 48 kDa. Observed band size: 55 kDa Exposure time: 1 minute; 8% SDS-PAGE gel. Proteins were transferred to a PVDF membrane and blocked with 5% NFDM/TBST for 1 hour at room temperature. The primary antibody at 1/500 dilution was used in 5% NFDM/TBST at room temperature for 2 hours. Goat Anti-Rabbit IgG - HRP Secondary Antibody at 1:300,000 dilution was used for 1 hour at room temperature.



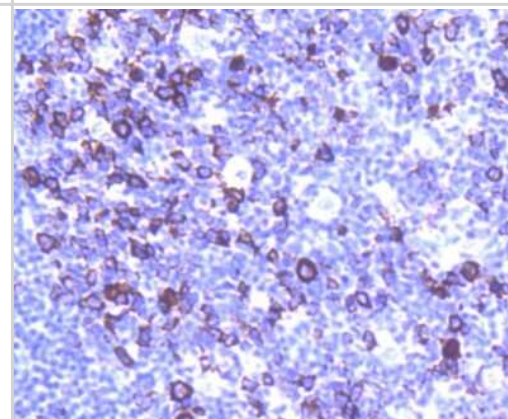
Immunohistochemistry-Paraffin: Cyclin B1 Antibody (SU33-03) [NBP2-67464] - Analysis of paraffin-embedded human breast carcinoma tissue with Rabbit anti-Cyclin B1 antibody washed with ddH₂O and PBS, and then probed with the primary antibody at 1/400 dilution for 1 hour at room temperature. The detection was performed using an HRP conjugated compact polymer system. DAB was used as the chromogen. Tissues were counterstained with hematoxylin and mounted with DPX.



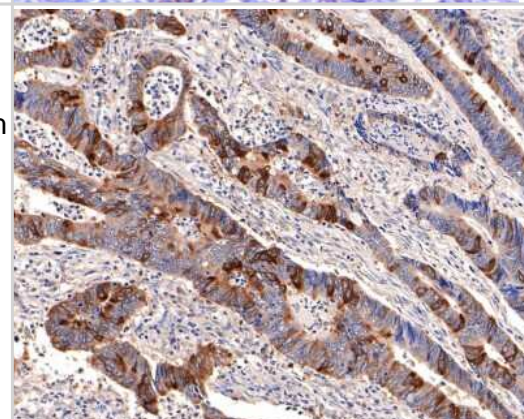
Western Blot: Cyclin B1 Antibody (SU33-03) [NBP2-67464] - Analysis of Cyclin B1 on different lysates using anti-Cyclin B1 antibody at 1/1,000 dilution. Positive control: Lane 1: Hela Lane 2: Daudi Lane 3: K562



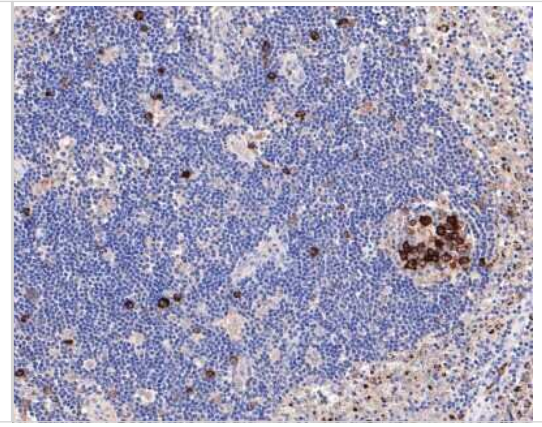
Immunohistochemistry-Paraffin: Cyclin B1 Antibody (SU33-03) [NBP2-67464] - Analysis of paraffin-embedded human tonsil tissue using anti-Cyclin B1 antibody. Counter stained with hematoxylin.



Immunohistochemistry-Paraffin: Cyclin B1 Antibody (SU33-03) [NBP2-67464] - Analysis of paraffin-embedded human colon carcinoma tissue with Rabbit anti-Cyclin B1 antibody washed with ddH₂O and PBS, and then probed with the primary antibody at 1/400 dilution for 1 hour at room temperature. The detection was performed using an HRP conjugated compact polymer system. DAB was used as the chromogen. Tissues were counterstained with hematoxylin and mounted with DPX.



Immunohistochemistry-Paraffin: Cyclin B1 Antibody (SU33-03) [NBP2-67464] - Analysis of paraffin-embedded human lymph nodes tissue with Rabbit anti-Cyclin B1 antibody washed with ddH₂O and PBS, and then probed with the primary antibody at 1/400 dilution for 1 hour at room temperature. The detection was performed using an HRP conjugated compact polymer system. DAB was used as the chromogen. Tissues were counterstained with hematoxylin and mounted with DPX.





Novus Biologicals USA

10730 E. Briarwood Avenue
Centennial, CO 80112
USA
Phone: 303.730.1950
Toll Free: 1.888.506.6887
Fax: 303.730.1966
nb-customerservice@bio-techne.com

Bio-Techne Canada

21 Canmotor Ave
Toronto, ON M8Z 4E6
Canada
Phone: 905.827.6400
Toll Free: 855.668.8722
Fax: 905.827.6402
canada.inquires@bio-techne.com

Bio-Techne Ltd

19 Barton Lane
Abingdon Science Park
Abingdon, OX14 3NB, United Kingdom
Phone: (44) (0) 1235 529449
Free Phone: 0800 37 34 15
Fax: (44) (0) 1235 533420
info.EMEA@bio-techne.com

General Contact Information

www.novusbio.com
Technical Support: nb-technical@bio-techne.com
Orders: nb-customerservice@bio-techne.com
General: novus@novusbio.com

Limitations

This product is for research use only and is not approved for use in humans or in clinical diagnosis. Primary Antibodies are guaranteed for 1 year from date of receipt.

For more information on our 100% guarantee, please visit www.novusbio.com/guarantee

Earn gift cards/discounts by submitting a review: www.novusbio.com/reviews/submit/NBP2-67464

Earn gift cards/discounts by submitting a publication using this product:
www.novusbio.com/publications

