

# Product Datasheet

## **AKT1 [p Ser473] Antibody (SY28-05) NBP2-67449**

Unit Size: 100 ul

Store at 4C short term. Aliquot and store at -20C long term. Avoid freeze-thaw cycles.

[www.novusbio.com](http://www.novusbio.com)



[technical@novusbio.com](mailto:technical@novusbio.com)

Protocols, Publications, Related Products, Reviews, Research Tools and Images at:  
[www.novusbio.com/NBP2-67449](http://www.novusbio.com/NBP2-67449)

Updated 1/3/2023 v.20.1

Earn rewards for product  
reviews and publications.

Submit a publication at [www.novusbio.com/publications](http://www.novusbio.com/publications)

Submit a review at [www.novusbio.com/reviews/destination/NBP2-67449](http://www.novusbio.com/reviews/destination/NBP2-67449)



**NBP2-67449**

AKT1 [p Ser473] Antibody (SY28-05)

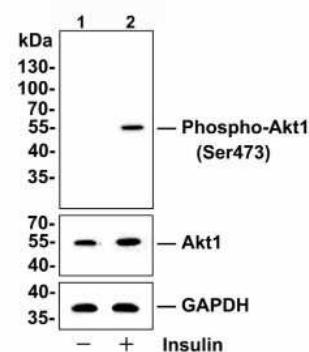
Product Information	
Unit Size	100 ul
Concentration	1 mg/ml
Storage	Store at 4C short term. Aliquot and store at -20C long term. Avoid freeze-thaw cycles.
Clonality	Monoclonal
Clone	SY28-05
Preservative	0.05% Sodium Azide
Isotype	IgG
Purity	Protein A purified
Buffer	TBS (pH7.4), 0.05% BSA, 40% Glycerol
Target Molecular Weight	56 kDa

Product Description	
Host	Rabbit
Gene Symbol	AKT1
Species	Human, Mouse
Immunogen	Synthetic phospho-peptide corresponding to residues surrounding Ser473 of human AKT1. (SwissProt: P31749 Human; SwissProt: P31750 Mouse)

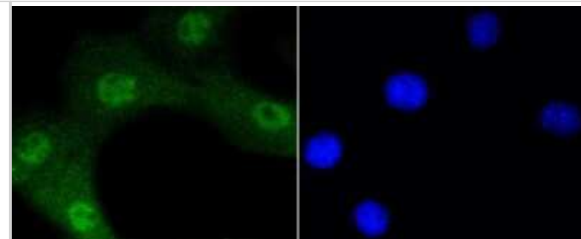
Product Application Details	
Applications	Western Blot, Immunocytochemistry/ Immunofluorescence, Immunohistochemistry, Immunohistochemistry-Paraffin
Recommended Dilutions	Western Blot 1:500-1:2000, Immunohistochemistry, Immunocytochemistry/ Immunofluorescence 1:50-1:200, Immunohistochemistry-Paraffin 1:50-1:200

**Images**

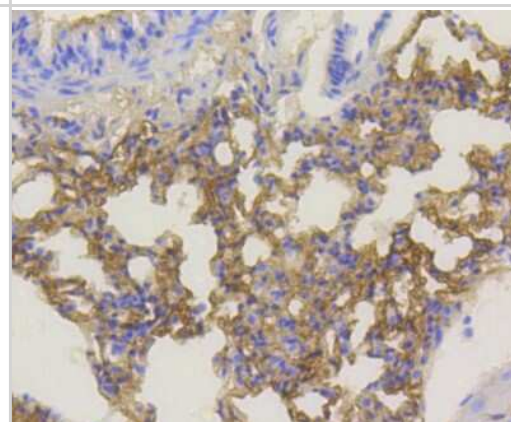
Western Blot: AKT1 [p Ser473] Antibody (SY28-05) [NBP2-67449] - Analysis of AKT1 [p Ser473] on Hela cell lysates. Lane 1: Hela cells were starved overnight, whole cell lysates, 10 ug/lane. Lane 2: Hela cells were starved overnight, then treated with 150 nM insulin for 15 mins, whole cell lysates, 10 ug/lane. Proteins were transferred to a PVDF membrane and blocked with 5% BSA in PBS for 1 hour at room temperature. The primary antibody Anti-AKT1 [p Ser473] (1/500) , Anti-Akt1 antibody ( 1/500) and Anti-GAPDH antibody (1/10,000) was used in 5% BSA at room temperature for 2 hours. Goat Anti-Rabbit IgG H&L (HRP) Secondary Antibody at 1:200,000 dilution was used for 1 hour at room temperature. Predicted band size: 56 kDa Observed band size: 56 kDa Exposure time: 1 minute 28 seconds



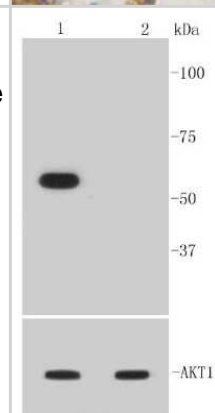
Immunocytochemistry/Immunofluorescence: AKT1 [p Ser473] Antibody (SY28-05) [NBP2-67449] - ICC/IF staining Phospho-Akt1(Ser473) in NIH/3T3 cells (green). The nuclear counterstain is DAPI (blue). Cells were fixed in paraformaldehyde, permeabilised with 0.25% Triton X-100 in PBS.



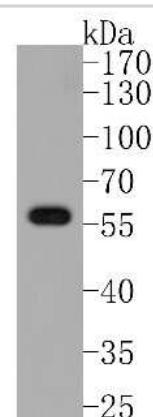
Immunohistochemistry-Paraffin: AKT1 [p Ser473] Antibody (SY28-05) [NBP2-67449] - IHC-P analysis of paraffin-embedded mouse lung tissue using anti-Phospho-Akt1(Ser473) antibody. Counter-stained with hematoxylin.



Western Blot: AKT1 [p Ser473] Antibody (SY28-05) [NBP2-67449] - WB analysis of Phospho-Akt1(Ser473) on different lysates using anti-Phospho-Akt1(Ser473) antibody at 1:1000 dilution. Positive control: Lane 1: NIH/3T3 treated with PDGF Lane 2: NIH/3T3 untreated



Western Blot: AKT1 [p Ser473] Antibody (SY28-05) [NBP2-67449] - Western blot analysis of AKT1 on PC-3 cell lysates. Proteins were transferred to a PVDF membrane and blocked with 5% BSA in PBS for 1 hour at room temperature. The primary antibody (1/500) was used in 5% BSA at room temperature for 2 hours. Goat Anti-Rabb





### **Novus Biologicals USA**

10730 E. Briarwood Avenue  
Centennial, CO 80112  
USA  
Phone: 303.730.1950  
Toll Free: 1.888.506.6887  
Fax: 303.730.1966  
nb-customerservice@bio-techne.com

### **Bio-Techne Canada**

21 Canmotor Ave  
Toronto, ON M8Z 4E6  
Canada  
Phone: 905.827.6400  
Toll Free: 855.668.8722  
Fax: 905.827.6402  
canada.inquires@bio-techne.com

### **Bio-Techne Ltd**

19 Barton Lane  
Abingdon Science Park  
Abingdon, OX14 3NB, United Kingdom  
Phone: (44) (0) 1235 529449  
Free Phone: 0800 37 34 15  
Fax: (44) (0) 1235 533420  
info.EMEA@bio-techne.com

### **General Contact Information**

[www.novusbio.com](http://www.novusbio.com)  
Technical Support: nb-technical@bio-techne.com  
Orders: nb-customerservice@bio-techne.com  
General: novus@novusbio.com

### **Limitations**

This product is for research use only and is not approved for use in humans or in clinical diagnosis. Primary Antibodies are guaranteed for 1 year from date of receipt.

For more information on our 100% guarantee, please visit [www.novusbio.com/guarantee](http://www.novusbio.com/guarantee)

Earn gift cards/discounts by submitting a review: [www.novusbio.com/reviews/submit/NBP2-67449](http://www.novusbio.com/reviews/submit/NBP2-67449)

Earn gift cards/discounts by submitting a publication using this product:  
[www.novusbio.com/publications](http://www.novusbio.com/publications)

