

# Product Datasheet

## STAT6 Antibody (SY02-72)

### NBP2-67445

Unit Size: 100 ul

Store at 4C short term. Aliquot and store at -20C long term. Avoid freeze-thaw cycles.

[www.novusbio.com](http://www.novusbio.com)



[technical@novusbio.com](mailto:technical@novusbio.com)

Protocols, Publications, Related Products, Reviews, Research Tools and Images at:  
[www.novusbio.com/NBP2-67445](http://www.novusbio.com/NBP2-67445)

Updated 1/3/2023 v.20.1

Earn rewards for product  
reviews and publications.

Submit a publication at [www.novusbio.com/publications](http://www.novusbio.com/publications)

Submit a review at [www.novusbio.com/reviews/destination/NBP2-67445](http://www.novusbio.com/reviews/destination/NBP2-67445)



**NBP2-67445**

STAT6 Antibody (SY02-72)

**Product Information**

|                                |  |
|--------------------------------|--|
| <b>Unit Size</b>               | 100 ul   |
| <b>Concentration</b>           | 1 mg/ml  |
| <b>Storage</b>                 | Store at 4C short term. Aliquot and store at -20C long term. Avoid freeze-thaw cycles. |
| <b>Clonality</b>               | Monoclonal   |
| <b>Clone</b>                   | SY02-72  |
| <b>Preservative</b>            | 0.05% Sodium Azide   |
| <b>Isotype</b>                 | IgG  |
| <b>Purity</b>                  | Protein A purified   |
| <b>Buffer</b>                  | TBS (pH7.4), 0.05% BSA, 40% Glycerol   |
| <b>Target Molecular Weight</b> | 94 kDa   |

**Product Description**

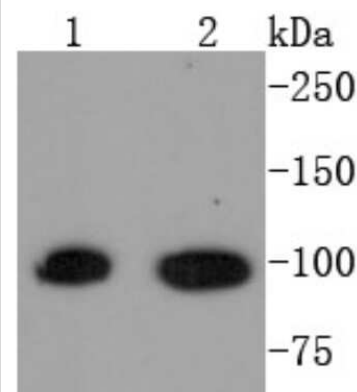
|                    |  |
|--------------------|--|
| <b>Host</b>        | Rabbit   |
| <b>Gene Symbol</b> | STAT6  |
| <b>Species</b>     | Human, Mouse   |
| <b>Immunogen</b>   | Recombinant Protein (SwissProt: P42226 Human; SwissProt: P52633 Mouse) |

**Product Application Details**

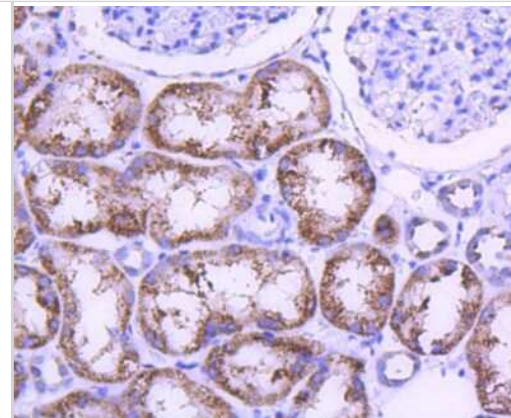
|                              |   |
|------------------------------|---|
| <b>Applications</b>          | Western Blot, Immunocytochemistry/ Immunofluorescence, Immunohistochemistry, Immunohistochemistry-Paraffin, Immunoprecipitation                             |
| <b>Recommended Dilutions</b> | Western Blot 1:500, Immunohistochemistry, Immunocytochemistry/ Immunofluorescence 1:50-1:200, Immunoprecipitation, Immunohistochemistry-Paraffin 1:50-1:200 |

**Images**

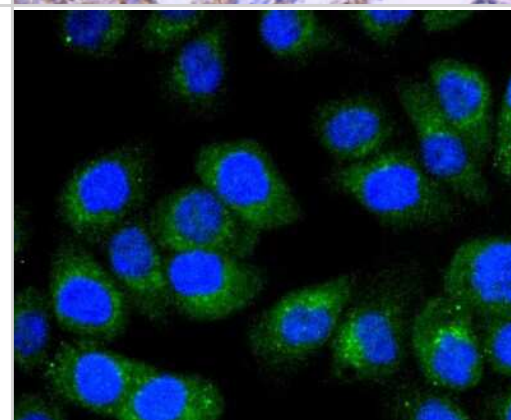
Western Blot: STAT6 Antibody (SY02-72) [NBP2-67445] - Analysis of STAT6 on different lysates using anti-STAT6 antibody at 1/1,000 dilution. Positive control: Lane 1: Hela Lane 2: Raji. Note: bands were detected near the predicted molecular weight of 94 kDa for both cell lines.



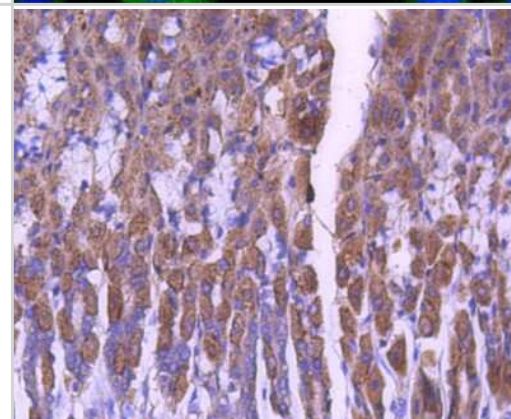
Immunohistochemistry-Paraffin: STAT6 Antibody (SY02-72) [NBP2-67445] - Analysis of paraffin-embedded human kidney tissue using anti-STAT6 antibody. Counter stained with hematoxylin.



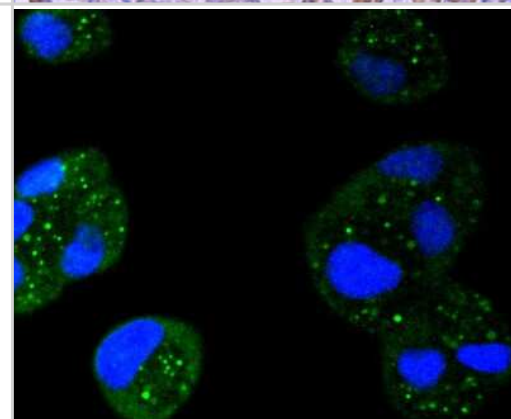
Immunocytochemistry/Immunofluorescence: STAT6 Antibody (SY02-72) [NBP2-67445] - Staining STAT6 in AGS cells (green). The nuclear counter stain is DAPI (blue). Cells were fixed in paraformaldehyde, permeabilised with 0.25% Triton X100/PBS.



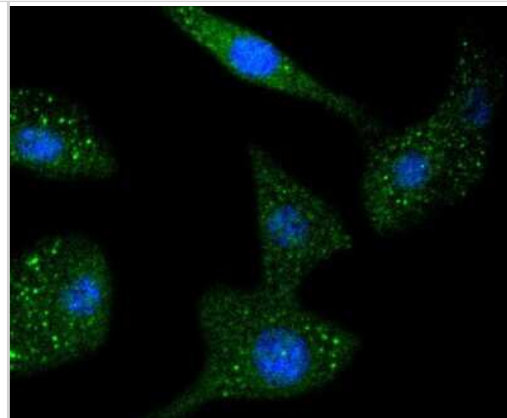
Immunohistochemistry-Paraffin: STAT6 Antibody (SY02-72) [NBP2-67445] - Analysis of paraffin-embedded mouse stomach tissue using anti-STAT6 antibody. Counter stained with hematoxylin.



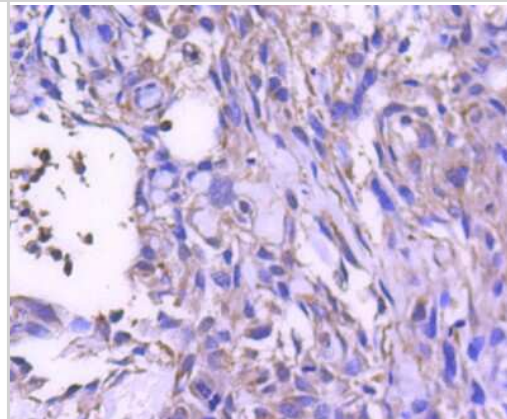
Immunocytochemistry/Immunofluorescence: STAT6 Antibody (SY02-72) [NBP2-67445] - Staining STAT6 in Hela cells (green). The nuclear counter stain is DAPI (blue). Cells were fixed in paraformaldehyde, permeabilised with 0.25% Triton X100/PBS.



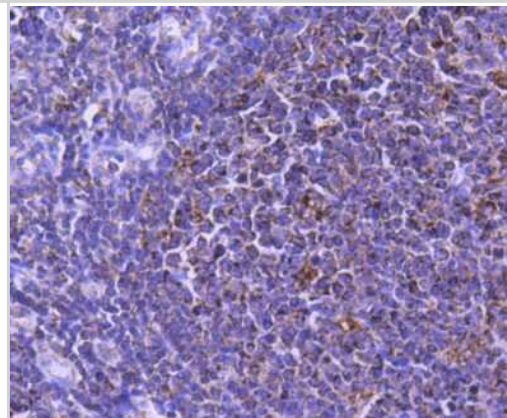
Immunocytochemistry/Immunofluorescence: STAT6 Antibody (SY02-72) [NBP2-67445] - Staining STAT6 in NIH/3T3 cells (green). The nuclear counter stain is DAPI (blue). Cells were fixed in paraformaldehyde, permeabilised with 0.25% Triton X100/PBS.



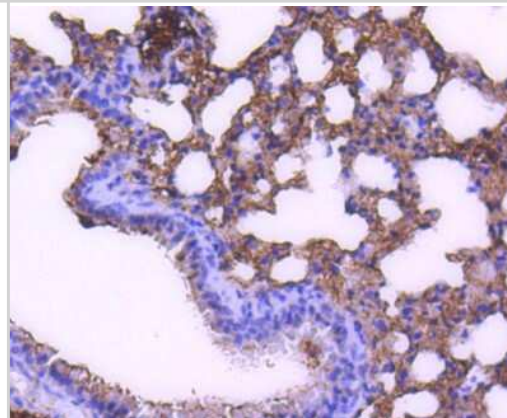
Immunohistochemistry-Paraffin: STAT6 Antibody (SY02-72) [NBP2-67445] - Analysis of paraffin-embedded human breast carcinoma tissue using anti-STAT6 antibody. Counter stained with hematoxylin.



Immunohistochemistry-Paraffin: STAT6 Antibody (SY02-72) [NBP2-67445] - Analysis of paraffin-embedded human tonsil tissue using anti-STAT6 antibody. Counter stained with hematoxylin.



Immunohistochemistry-Paraffin: STAT6 Antibody (SY02-72) [NBP2-67445] - Analysis of paraffin-embedded mouse lung tissue using anti-STAT6 antibody. Counter stained with hematoxylin.





### **Novus Biologicals USA**

10730 E. Briarwood Avenue  
Centennial, CO 80112  
USA  
Phone: 303.730.1950  
Toll Free: 1.888.506.6887  
Fax: 303.730.1966  
nb-customerservice@bio-techne.com

### **Bio-Techne Canada**

21 Canmotor Ave  
Toronto, ON M8Z 4E6  
Canada  
Phone: 905.827.6400  
Toll Free: 855.668.8722  
Fax: 905.827.6402  
canada.inquires@bio-techne.com

### **Bio-Techne Ltd**

19 Barton Lane  
Abingdon Science Park  
Abingdon, OX14 3NB, United Kingdom  
Phone: (44) (0) 1235 529449  
Free Phone: 0800 37 34 15  
Fax: (44) (0) 1235 533420  
info.EMEA@bio-techne.com

### **General Contact Information**

[www.novusbio.com](http://www.novusbio.com)  
Technical Support: nb-technical@bio-techne.com  
Orders: nb-customerservice@bio-techne.com  
General: novus@novusbio.com

### **Limitations**

This product is for research use only and is not approved for use in humans or in clinical diagnosis. Primary Antibodies are guaranteed for 1 year from date of receipt.

For more information on our 100% guarantee, please visit [www.novusbio.com/guarantee](http://www.novusbio.com/guarantee)

Earn gift cards/discounts by submitting a review: [www.novusbio.com/reviews/submit/NBP2-67445](http://www.novusbio.com/reviews/submit/NBP2-67445)

Earn gift cards/discounts by submitting a publication using this product:  
[www.novusbio.com/publications](http://www.novusbio.com/publications)

