

# Product Datasheet

## Smad3 Antibody (SY25-01)

### NBP2-67434

Unit Size: 100 ul

Store at 4C short term. Aliquot and store at -20C long term. Avoid freeze-thaw cycles.

[www.novusbio.com](http://www.novusbio.com)



[technical@novusbio.com](mailto:technical@novusbio.com)

Protocols, Publications, Related Products, Reviews, Research Tools and Images at:  
[www.novusbio.com/NBP2-67434](http://www.novusbio.com/NBP2-67434)

Updated 1/3/2023 v.20.1

Earn rewards for product  
reviews and publications.

Submit a publication at [www.novusbio.com/publications](http://www.novusbio.com/publications)

Submit a review at [www.novusbio.com/reviews/destination/NBP2-67434](http://www.novusbio.com/reviews/destination/NBP2-67434)



**NBP2-67434**

Smad3 Antibody (SY25-01)

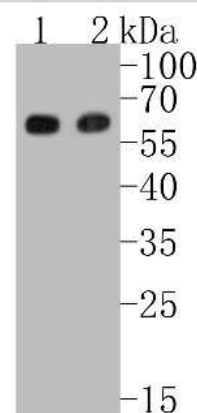
Product Information	
Unit Size	100 ul
Concentration	1 mg/ml
Storage	Store at 4C short term. Aliquot and store at -20C long term. Avoid freeze-thaw cycles.
Clonality	Monoclonal
Clone	SY25-01
Preservative	0.05% Sodium Azide
Isotype	IgG
Purity	Protein A purified
Buffer	TBS (pH7.4), 0.05% BSA, 40% Glycerol

Product Description	
Host	Rabbit
Gene Symbol	SMAD3
Species	Human, Mouse, Rat
Immunogen	Synthetic peptide within Human Smad3 aa 181-230 / 425. (SwissProt: P84022 Human; SwissProt: Q8BUN5 Mouse; SwissProt: P84025 Rat)

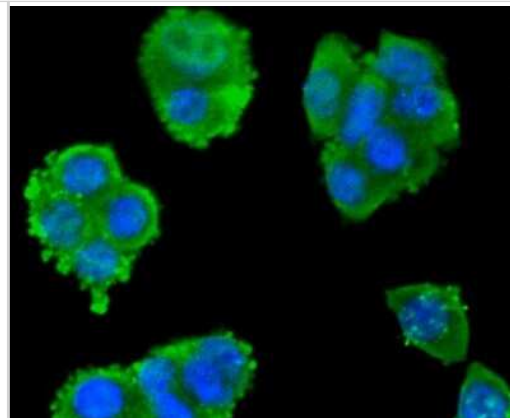
Product Application Details	
Applications	Western Blot, Flow Cytometry, Immunocytochemistry/ Immunofluorescence, Immunohistochemistry, Immunohistochemistry-Paraffin
Recommended Dilutions	Western Blot 1:500-1:2000, Flow Cytometry 1:50-1:100, Immunohistochemistry, Immunocytochemistry/ Immunofluorescence 1:50-1:200, Immunohistochemistry-Paraffin 1:50-1:200

**Images**

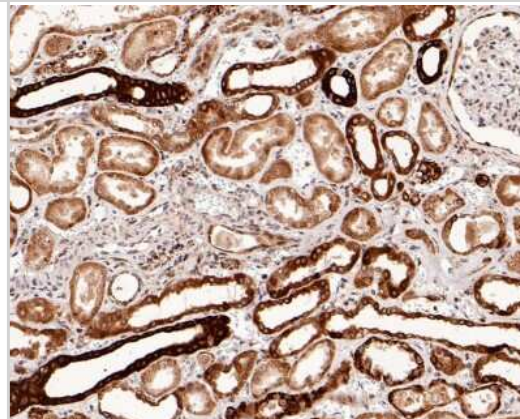
Western Blot: Smad3 Antibody (SY25-01) [NBP2-67434] - Western blot analysis of Smad3 on different lysates. Proteins were transferred to a PVDF membrane and blocked with 5% BSA in PBS for 1 hour at room temperature. The primary antibody (1/500) was used in 5% BSA at room temperature for 2 hours. Goat Anti-Rab



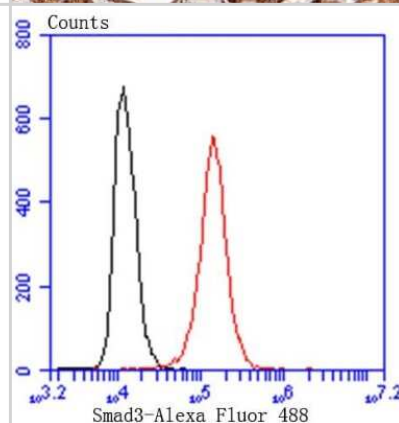
**Immunocytochemistry/Immunofluorescence: Smad3 Antibody (SY25-01) [NBP2-67434]** - Staining Smad3 in SW480 cells (green). The nuclear counter stain is DAPI (blue). Cells were fixed in paraformaldehyde, permeabilised with 0.25% Triton X100/PBS.



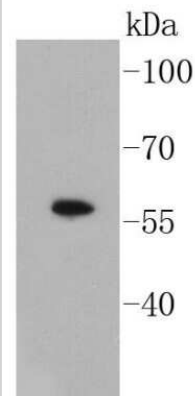
**Immunohistochemistry-Paraffin: Smad3 Antibody (SY25-01) [NBP2-67434]** - Analysis of paraffin-embedded human kidney tissue with Rabbit anti-Smad3 antibody washed with ddH<sub>2</sub>O and PBS, and then probed with the primary antibody at 1/500 dilution for 1 hour at room temperature. The detection was performed using an HRP conjugated compact polymer system. DAB was used as the chromogen. Tissues were counterstained with hematoxylin and mounted with DPX.



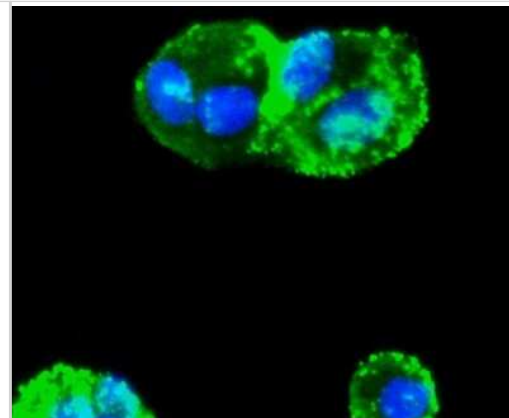
**Flow Cytometry: Smad3 Antibody (SY25-01) [NBP2-67434]** - Analysis of Hela cells with Smad3 antibody at 1/50 dilution (red) compared with an unlabelled control (cells without incubation with primary antibody; black). Alexa Fluor 488-conjugated goat anti rabbit IgG was used as the secondary antibody.



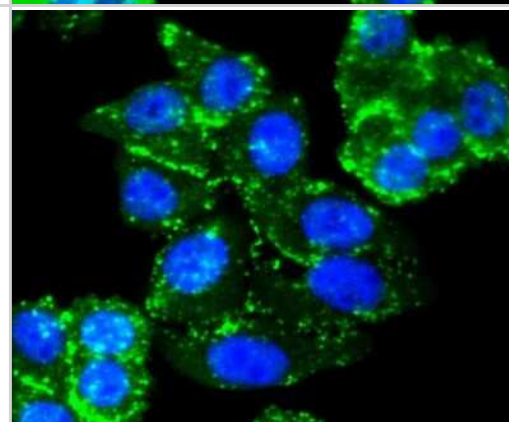
**Western Blot: Smad3 Antibody (SY25-01) [NBP2-67434]** - Analysis of Smad3 on A549 cell lysates using anti-Smad3 antibody at 1/1,000 dilution.



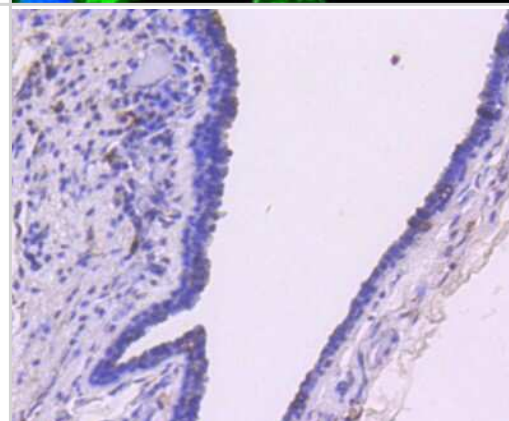
Immunocytochemistry/Immunofluorescence: Smad3 Antibody (SY25-01) [NBP2-67434] - Staining Smad3 in Hela cells (green). The nuclear counter stain is DAPI (blue). Cells were fixed in paraformaldehyde, permeabilised with 0.25% Triton X100/PBS.



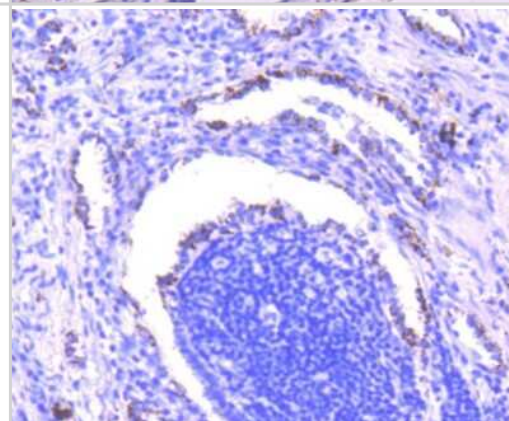
Immunocytochemistry/Immunofluorescence: Smad3 Antibody (SY25-01) [NBP2-67434] - Staining Smad3 in HepG2 cells (green). The nuclear counter stain is DAPI (blue). Cells were fixed in paraformaldehyde, permeabilised with 0.25% Triton X100/PBS.



Immunohistochemistry-Paraffin: Smad3 Antibody (SY25-01) [NBP2-67434] - Analysis of paraffin-embedded human breast carcinoma tissue using anti-Smad3 antibody. Counter stained with hematoxylin.

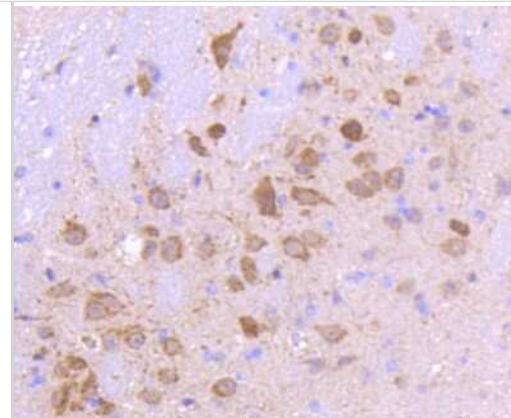


Immunohistochemistry-Paraffin: Smad3 Antibody (SY25-01) [NBP2-67434] - Analysis of paraffin-embedded human lung cancer tissue using anti-Smad3 antibody. Counter stained with hematoxylin.

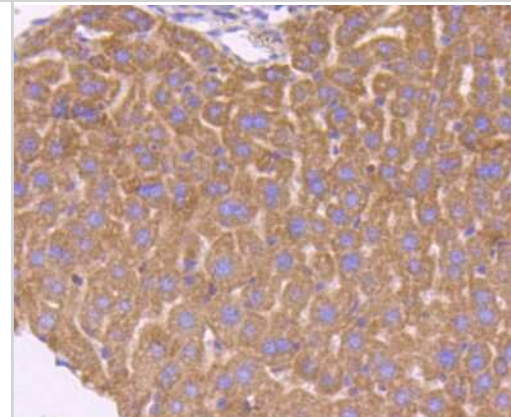




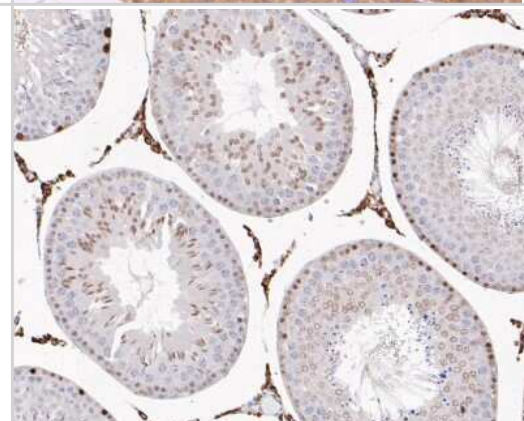
Immunohistochemistry-Paraffin: Smad3 Antibody (SY25-01) [NBP2-67434] - Analysis of paraffin-embedded mouse brain tissue using anti-Smad3 antibody. Counter stained with hematoxylin.



Immunohistochemistry-Paraffin: Smad3 Antibody (SY25-01) [NBP2-67434] - Analysis of paraffin-embedded mouse liver tissue using anti-Smad3 antibody. Counter stained with hematoxylin.



Immunohistochemistry-Paraffin: Smad3 Antibody (SY25-01) [NBP2-67434] - Immunohistochemical analysis of paraffin-embedded rat testis tissue using anti-Smad3 antibody. The section was pre-treated using heat mediated antigen retrieval with sodium citrate buffer (pH 6.0) for 20 minutes. The tissues were blocked in 5% BSA for 30 minutes at room temperature, washed with ddH<sub>2</sub>O and PBS, and then probed with the primary antibody (ET1607-41, 1/200) for 30 minutes at room temperature. The detection was performed using an HRP conjugated compact polymer system. DAB was used as the chromogen. Tissues were counterstained with hematoxylin and mounted with DPX.





### **Novus Biologicals USA**

10730 E. Briarwood Avenue  
Centennial, CO 80112  
USA  
Phone: 303.730.1950  
Toll Free: 1.888.506.6887  
Fax: 303.730.1966  
nb-customerservice@bio-techne.com

### **Bio-Techne Canada**

21 Canmotor Ave  
Toronto, ON M8Z 4E6  
Canada  
Phone: 905.827.6400  
Toll Free: 855.668.8722  
Fax: 905.827.6402  
canada.inquires@bio-techne.com

### **Bio-Techne Ltd**

19 Barton Lane  
Abingdon Science Park  
Abingdon, OX14 3NB, United Kingdom  
Phone: (44) (0) 1235 529449  
Free Phone: 0800 37 34 15  
Fax: (44) (0) 1235 533420  
info.EMEA@bio-techne.com

### **General Contact Information**

[www.novusbio.com](http://www.novusbio.com)  
Technical Support: [nb-technical@bio-techne.com](mailto:nb-technical@bio-techne.com)  
Orders: [nb-customerservice@bio-techne.com](mailto:nb-customerservice@bio-techne.com)  
General: [novus@novusbio.com](mailto:novus@novusbio.com)

### **Limitations**

This product is for research use only and is not approved for use in humans or in clinical diagnosis. Primary Antibodies are guaranteed for 1 year from date of receipt.

For more information on our 100% guarantee, please visit [www.novusbio.com/guarantee](http://www.novusbio.com/guarantee)

Earn gift cards/discounts by submitting a review: [www.novusbio.com/reviews/submit/NBP2-67434](http://www.novusbio.com/reviews/submit/NBP2-67434)

Earn gift cards/discounts by submitting a publication using this product:  
[www.novusbio.com/publications](http://www.novusbio.com/publications)

