

# Product Datasheet

## MMP-14/MT1-MMP Antibody (3-F7) NBP2-67415

Unit Size: 100 ul

Store at 4C short term. Aliquot and store at -20C long term. Avoid freeze-thaw cycles.

[www.novusbio.com](http://www.novusbio.com)



[technical@novusbio.com](mailto:technical@novusbio.com)

**Reviews: 1   Publications: 2**

Protocols, Publications, Related Products, Reviews, Research Tools and Images at:  
[www.novusbio.com/NBP2-67415](http://www.novusbio.com/NBP2-67415)

Updated 10/23/2024 v.20.1

**Earn rewards for product  
reviews and publications.**

Submit a publication at [www.novusbio.com/publications](http://www.novusbio.com/publications)

Submit a review at [www.novusbio.com/reviews/destination/NBP2-67415](http://www.novusbio.com/reviews/destination/NBP2-67415)

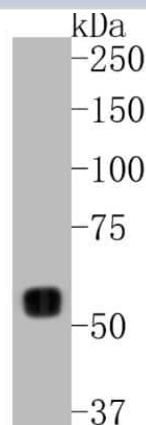


**NBP2-67415****MMP-14/MT1-MMP Antibody (3-F7)**

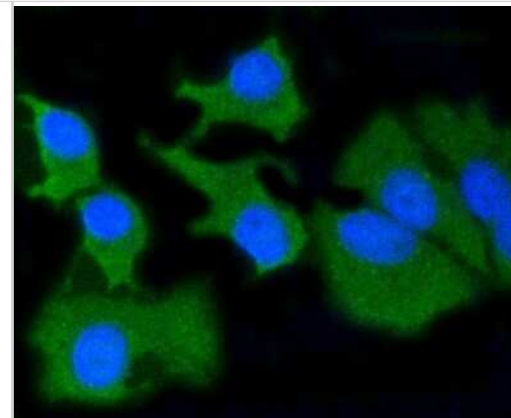
Product Information	
Unit Size	100 ul
Concentration	1 mg/ml
Storage	Store at 4C short term. Aliquot and store at -20C long term. Avoid freeze-thaw cycles.
Clonality	Monoclonal
Clone	3-F7
Preservative	0.05% Sodium Azide
Isotype	IgG
Purity	Protein A purified
Buffer	TBS (pH7.4), 0.05% BSA, 40% Glycerol
Product Description	
Host	Rabbit
Gene ID	4323
Gene Symbol	MMP14
Species	Human, Mouse, Rat
Immunogen	Synthetic peptide within Human MMP-14/MT1-MMP aa 149-200 / 582. (SwissProt: P50281 Human; SwissProt: P53690 Mouse; SwissProt: Q10739 Rat)
Product Application Details	
Applications	Western Blot, Flow Cytometry, Immunocytochemistry/ Immunofluorescence, Immunohistochemistry, Immunohistochemistry-Paraffin, Immunoprecipitation
Recommended Dilutions	Western Blot 1:500-1:2000, Flow Cytometry 1:50-1:100, Immunohistochemistry, Immunocytochemistry/ Immunofluorescence 1:50-1:200, Immunoprecipitation, Immunohistochemistry-Paraffin 1:50-1:200

**Images**

Western Blot: MMP-14/MT1-MMP Antibody (3-F7) [NBP2-67415] - Analysis of MMP14 on human kidney tissue lysates. Proteins were transferred to a PVDF membrane and blocked with 5% BSA in PBS for 1 hour at room temperature. The primary antibody (1/500) was used in 5% BSA at room temperature for 2 hours. Goat Anti-Rabbit IgG - HRP Secondary Antibody at 1:5,000 dilution was used for 1 hour at room temperature.



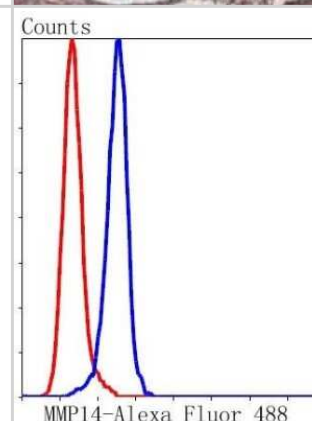
Immunocytochemistry/Immunofluorescence: MMP-14/MT1-MMP Antibody (3-F7) [NBP2-67415] - Staining MMP14 in BT-20 cells (green). The nuclear counter stain is DAPI (blue). Cells were fixed in paraformaldehyde, permeabilised with 0.25% Triton X100/PBS.



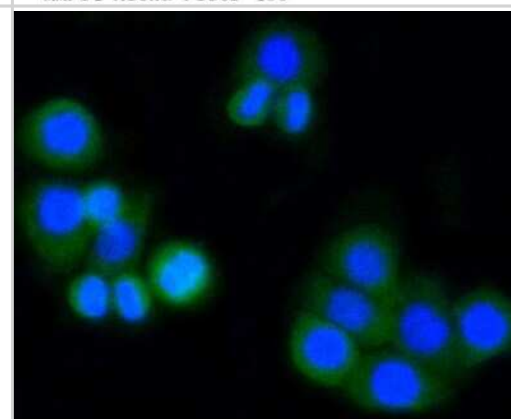
Immunohistochemistry-Paraffin: MMP-14/MT1-MMP Antibody (3-F7) [NBP2-67415] - Human endometrial adenocarcinoma paraffin-embedded tissue section. Tissue section was fixed, deparaffinized and EDTA was used for antigen retrieval. Incubated for 10 hours with primary antibody. IHC-P image submitted by a verified customer review.



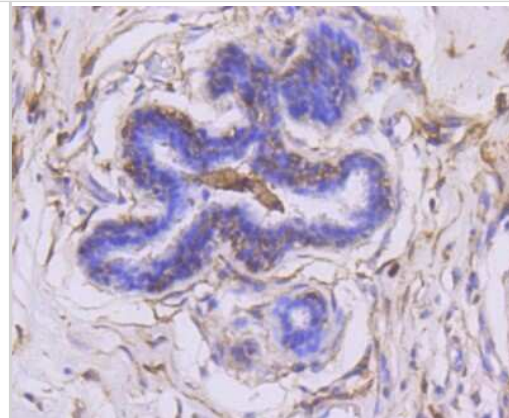
Flow Cytometry: MMP-14/MT1-MMP Antibody (3-F7) [NBP2-67415] - Analysis of A549 cells with MMP14 antibody at 1/50 dilution (blue) compared with an unlabelled control (cells without incubation with primary antibody; red). Alexa Fluor 488-conjugated goat anti rabbit IgG was used as the secondary antibody.



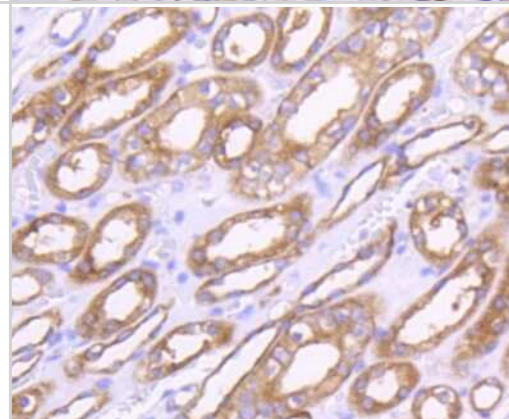
Immunocytochemistry/Immunofluorescence: MMP-14/MT1-MMP Antibody (3-F7) [NBP2-67415] - Staining MMP14 in CRC cells (green). The nuclear counter stain is DAPI (blue). Cells were fixed in paraformaldehyde, permeabilised with 0.25% Triton X100/PBS.



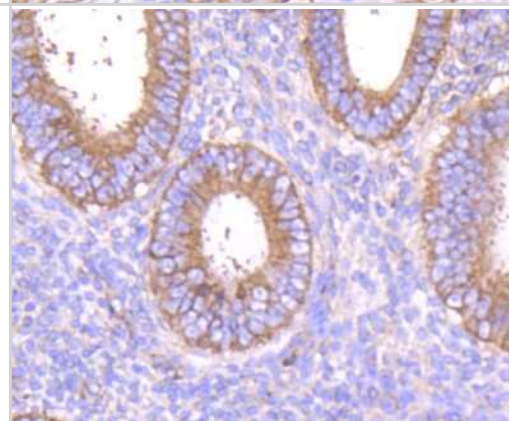
Immunohistochemistry-Paraffin: MMP-14/MT1-MMP Antibody (3-F7) [NBP2-67415] - Analysis of paraffin-embedded human breast carcinoma tissue using anti-MMP14 antibody. Counter stained with hematoxylin.



Immunohistochemistry-Paraffin: MMP-14/MT1-MMP Antibody (3-F7) [NBP2-67415] - Analysis of paraffin-embedded human kidney tissue using anti-MMP14 antibody. Counter stained with hematoxylin.



Immunohistochemistry-Paraffin: MMP-14/MT1-MMP Antibody (3-F7) [NBP2-67415] - Analysis of paraffin-embedded human uterus tissue using anti-MMP14 antibody. Counter stained with hematoxylin.



## Publications

Danilo Pellin, Natalie Claudio, Zihan Guo, Tahereh Ziglari, Ferdinando Pucci Gene Expression Profiling of Lymph Node Sub-Capsular Sinus Macrophages in Cancer *Frontiers in Immunology* 2021-06-08 [PMID: 34168645]

Feng Y, Cai H, Huang X et al. Active MT1-MMP is tethered to collagen fibers in DDR2-containing remnants *Gene* 2021-04-18 [PMID: 33882324]



### **Novus Biologicals USA**

10730 E. Briarwood Avenue  
Centennial, CO 80112  
USA  
Phone: 303.730.1950  
Toll Free: 1.888.506.6887  
Fax: 303.730.1966  
nb-customerservice@bio-techne.com

### **Bio-Techne Canada**

21 Canmotor Ave  
Toronto, ON M8Z 4E6  
Canada  
Phone: 905.827.6400  
Toll Free: 855.668.8722  
Fax: 905.827.6402  
canada.inquires@bio-techne.com

### **Bio-Techne Ltd**

19 Barton Lane  
Abingdon Science Park  
Abingdon, OX14 3NB, United Kingdom  
Phone: (44) (0) 1235 529449  
Free Phone: 0800 37 34 15  
Fax: (44) (0) 1235 533420  
info.EMEA@bio-techne.com

### **General Contact Information**

[www.novusbio.com](http://www.novusbio.com)  
Technical Support: nb-technical@bio-techne.com  
Orders: nb-customerservice@bio-techne.com  
General: novus@novusbio.com

### **Products Related to NBP2-67415**

---

HAF008	Goat anti-Rabbit IgG Secondary Antibody [HRP]
NB7160	Goat anti-Rabbit IgG (H+L) Secondary Antibody [HRP]
NBP2-24891	Rabbit IgG Isotype Control
NBP2-61379-1mg	Recombinant Human MMP-14/MT1-MMP Protein

---

### **Limitations**

This product is for research use only and is not approved for use in humans or in clinical diagnosis. Primary Antibodies are guaranteed for 1 year from date of receipt.

For more information on our 100% guarantee, please visit [www.novusbio.com/guarantee](http://www.novusbio.com/guarantee)

Earn gift cards/discounts by submitting a review: [www.novusbio.com/reviews/submit/NBP2-67415](http://www.novusbio.com/reviews/submit/NBP2-67415)

Earn gift cards/discounts by submitting a publication using this product:  
[www.novusbio.com/publications](http://www.novusbio.com/publications)

