

Product Datasheet

STAT6 Antibody (SY13-09)

NBP2-67393

Unit Size: 100 ul

Store at 4C short term. For extended storage, add an equal volume of glycerol, aliquot and store at -20C or below. Avoid repeated freeze-thaw cycles.

www.novusbio.com



technical@novusbio.com

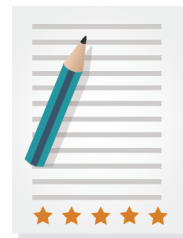
Protocols, Publications, Related Products, Reviews, Research Tools and Images at:
www.novusbio.com/NBP2-67393

Updated 1/3/2023 v.20.1

Earn rewards for product reviews and publications.

Submit a publication at www.novusbio.com/publications

Submit a review at www.novusbio.com/reviews/destination/NBP2-67393



NBP2-67393

STAT6 Antibody (SY13-09)

Product Information

Unit Size	100 ul
Concentration	1 mg/ml
Storage	Store at 4C short term. For extended storage, add an equal volume of glycerol, aliquot and store at -20C or below. Avoid repeated freeze-thaw cycles.
Clonality	Monoclonal
Clone	SY13-09
Preservative	0.05% Sodium Azide
Isotype	IgG
Purity	Protein A purified
Buffer	TBS (pH7.4), 0.05% BSA, 40% Glycerol
Target Molecular Weight	94 kDa

Product Description

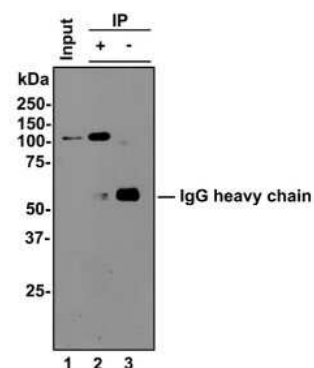
Host	Rabbit
Gene Symbol	STAT6
Species	Human, Mouse
Immunogen	Synthetic peptide within human STAT6 C terminal. (SwissProt: P42226 Human; SwissProt: P52633 Mouse)

Product Application Details

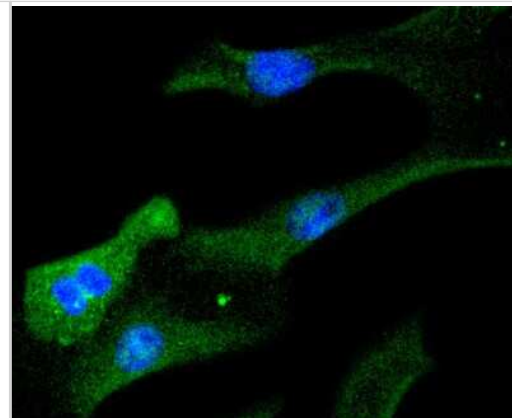
Applications	Western Blot, Immunocytochemistry/ Immunofluorescence, Immunohistochemistry, Immunohistochemistry-Paraffin, Immunoprecipitation
Recommended Dilutions	Western Blot 1:500-1:1000, Immunohistochemistry, Immunocytochemistry/ Immunofluorescence 1:50-1:200, Immunoprecipitation, Immunohistochemistry-Paraffin 1:50-1:200

Images

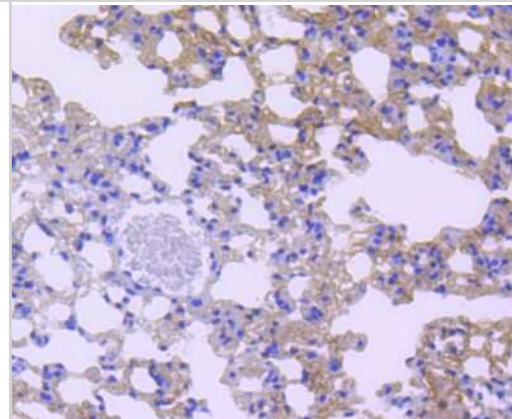
Western Blot: STAT6 Antibody (SY13-09) [NBP2-67393] - STAT6 was immunoprecipitated from 0.5 mg Hela whole cell lysates with NBP2-67393 at 2 ug/mL. Western blot was performed from the immunoprecipitate using NBP2-67393 at 1/500 dilution for 45 minutes at room temperature. Goat anti-Rabbit IgG-HRP Secondary Antibody was used at 1:300,000 dilution for 30 minutes at room temperature. Lane 1: Hela whole cell lysates at 10 ug; Lane 2: STAT6 IP in Hela whole cell lysates; Lane 3: Rabbit IgG instead of STAT6 in Hela whole cell lysates. Predicted band size: 94 kDa Observed band size: 100 kDa Exposure time: 2 minutes; 8% SDS-PAGE gel.



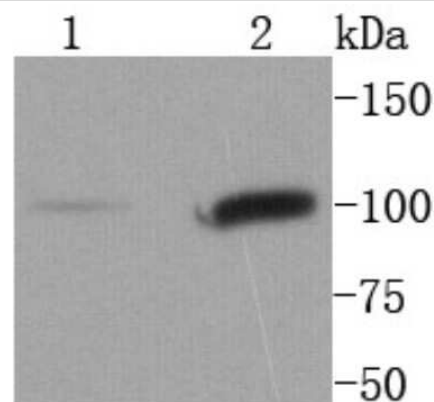
Immunocytochemistry/Immunofluorescence: STAT6 Antibody (SY13-09) [NBP2-67393] - Staining STAT6 in NIH/3T3 cells (green). The nuclear counter stain is DAPI (blue). Cells were fixed in paraformaldehyde, permeabilised with 0.25% Triton X100/PBS.



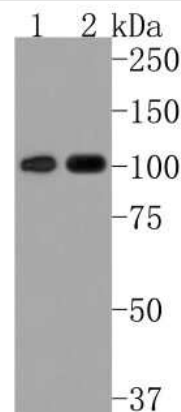
Immunohistochemistry-Paraffin: STAT6 Antibody (SY13-09) [NBP2-67393] - Analysis of paraffin-embedded mouse lung tissue using anti-STAT6 antibody. Counter stained with hematoxylin.



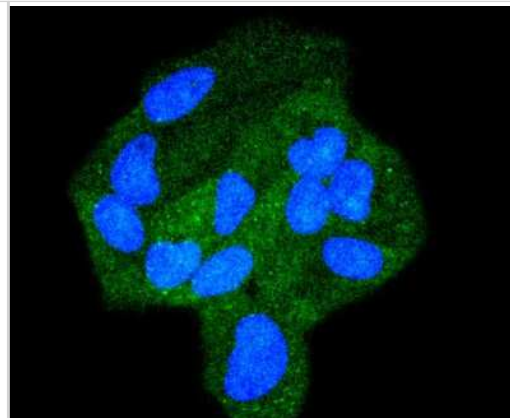
Western Blot: STAT6 Antibody (SY13-09) [NBP2-67393] - Analysis of STAT6 on different lysates using anti-STAT6 antibody at 1/1,000 dilution. Positive control: Lane 1: NIH/3T3 Lane 2: HeLa. Note: the band detected for HeLa was slightly higher than the predicted molecular weight of 94 kDa.



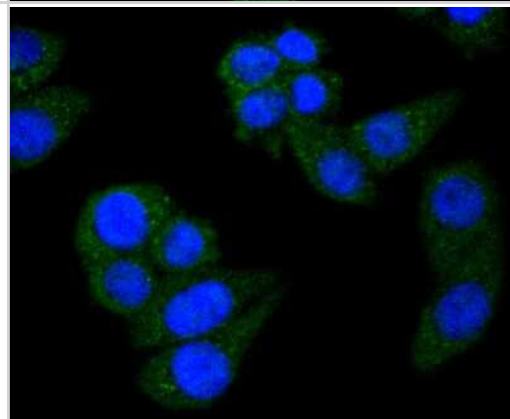
Western Blot: STAT6 Antibody (SY13-09) [NBP2-67393] - Analysis of STAT6 on different lysates. Proteins were transferred to a PVDF membrane and blocked with 5% BSA in PBS for 1 hour at room temperature. The primary antibody (1/500) was used in 5% BSA at room temperature for 2 hours. Goat Anti-Rabbit IgG - HRP Secondary Antibody at 1:200,000 dilution was used for 1 hour at room temperature. Positive control: Lane 1: Raji cell lysate Lane 2: Daudi cell lysate Predicted band size: 94 kDa Observed band size: 100 kDa



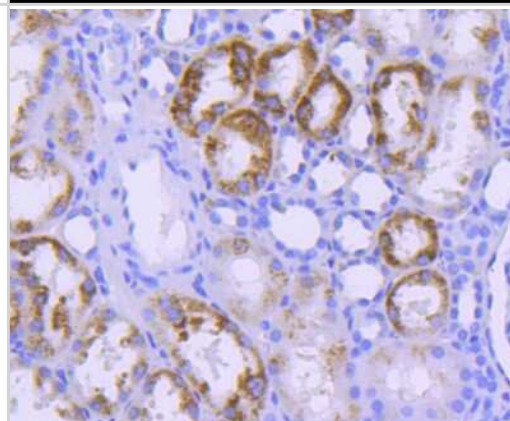
Immunocytochemistry/Immunofluorescence: STAT6 Antibody (SY13-09) [NBP2-67393] - Staining STAT6 in Hela cells (green). The nuclear counter stain is DAPI (blue). Cells were fixed in paraformaldehyde, permeabilised with 0.25% Triton X100/PBS.



Immunocytochemistry/Immunofluorescence: STAT6 Antibody (SY13-09) [NBP2-67393] - Staining STAT6 in HepG2 cells (green). The nuclear counter stain is DAPI (blue). Cells were fixed in paraformaldehyde, permeabilised with 0.25% Triton X100/PBS.



Immunohistochemistry-Paraffin: STAT6 Antibody (SY13-09) [NBP2-67393] - Analysis of paraffin-embedded human kidney tissue using anti-STAT6 antibody. Counter stained with hematoxylin.





Novus Biologicals USA

10730 E. Briarwood Avenue
Centennial, CO 80112
USA
Phone: 303.730.1950
Toll Free: 1.888.506.6887
Fax: 303.730.1966
nb-customerservice@bio-techne.com

Bio-Techne Canada

21 Canmotor Ave
Toronto, ON M8Z 4E6
Canada
Phone: 905.827.6400
Toll Free: 855.668.8722
Fax: 905.827.6402
canada.inquires@bio-techne.com

Bio-Techne Ltd

19 Barton Lane
Abingdon Science Park
Abingdon, OX14 3NB, United Kingdom
Phone: (44) (0) 1235 529449
Free Phone: 0800 37 34 15
Fax: (44) (0) 1235 533420
info.EMEA@bio-techne.com

General Contact Information

www.novusbio.com
Technical Support: nb-technical@bio-techne.com
Orders: nb-customerservice@bio-techne.com
General: novus@novusbio.com

Limitations

This product is for research use only and is not approved for use in humans or in clinical diagnosis. Primary Antibodies are guaranteed for 1 year from date of receipt.

For more information on our 100% guarantee, please visit www.novusbio.com/guarantee

Earn gift cards/discounts by submitting a review: www.novusbio.com/reviews/submit/NBP2-67393

Earn gift cards/discounts by submitting a publication using this product:
www.novusbio.com/publications

