

# Product Datasheet

## RB1 [p Ser807] Antibody (SR3-82) NBP2-67338

Unit Size: 100 ul

Store at 4C short term. Aliquot and store at -20C long term. Avoid freeze-thaw cycles.

[www.novusbio.com](http://www.novusbio.com)



[technical@novusbio.com](mailto:technical@novusbio.com)

Protocols, Publications, Related Products, Reviews, Research Tools and Images at:  
[www.novusbio.com/NBP2-67338](http://www.novusbio.com/NBP2-67338)

Updated 1/3/2023 v.20.1

Earn rewards for product  
reviews and publications.

Submit a publication at [www.novusbio.com/publications](http://www.novusbio.com/publications)

Submit a review at [www.novusbio.com/reviews/destination/NBP2-67338](http://www.novusbio.com/reviews/destination/NBP2-67338)



**NBP2-67338**

RB1 [p Ser807] Antibody (SR3-82)

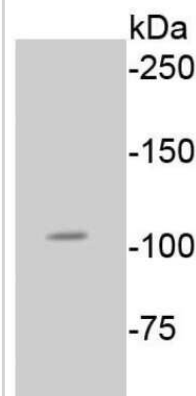
Product Information	
Unit Size	100 ul
Concentration	1 mg/ml
Storage	Store at 4C short term. Aliquot and store at -20C long term. Avoid freeze-thaw cycles.
Clonality	Monoclonal
Clone	SR3-82
Preservative	0.05% Sodium Azide
Isotype	IgG
Purity	Protein A purified
Buffer	TBS (pH7.4), 0.05% BSA, 40% Glycerol

Product Description	
Host	Rabbit
Gene Symbol	RB1
Species	Human, Mouse, Rat
Immunogen	Synthetic phospho-peptide corresponding to residues surrounding Ser807 of Human RB1. (SwissProt: P06400 Human; SwissProt: P13405 Mouse; SwissProt: P33568 Rat)

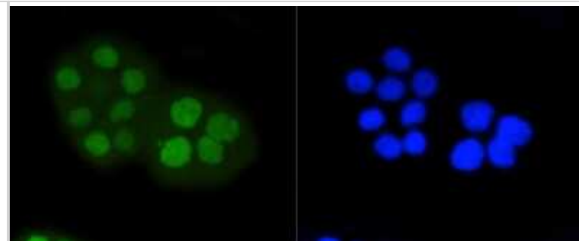
Product Application Details	
Applications	Western Blot, Immunocytochemistry/ Immunofluorescence, Immunohistochemistry, Immunohistochemistry-Paraffin
Recommended Dilutions	Western Blot 1:1000, Immunohistochemistry, Immunocytochemistry/ Immunofluorescence 1:50-1:200, Immunohistochemistry-Paraffin 1:50-1:200

**Images**

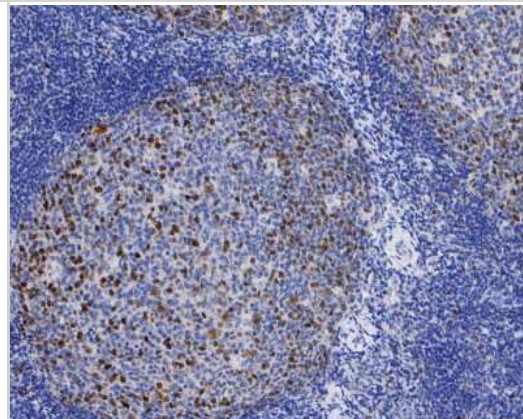
Western Blot: RB1 [p Ser807] Antibody (SR3-82) [NBP2-67338] - Analysis of Phospho-Rb(S807) on A549 cell lysates using anti-Phospho-Rb(S807) antibody at 1/1,000 dilution.



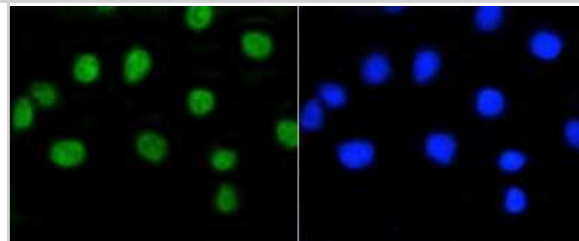
Immunocytochemistry/Immunofluorescence: RB1 [p Ser807] Antibody (SR3-82) [NBP2-67338] - Staining Phospho-Rb(S807) in CRC cells (green). Cells were fixed in paraformaldehyde, permeabilised with 0.25% Triton X100/PBS.



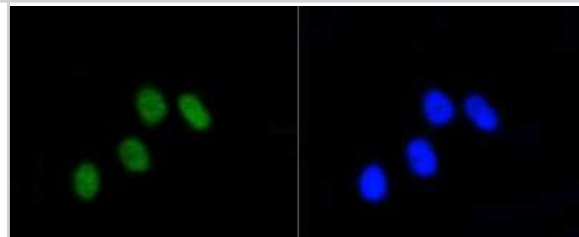
Immunohistochemistry-Paraffin: RB1 [p Ser807] Antibody (SR3-82) [NBP2-67338] - Immunohistochemical analysis of paraffin-embedded human tonsil tissue using anti-RB1 antibody. The section was pre-treated using heat mediated antigen retrieval with sodium citrate buffer (pH 6.0) for 20 minutes. The tissues were blocked in 5% BSA for 30 minutes at room temperature, washed with ddH<sub>2</sub>O and PBS, and then probed with the primary antibody (ET1602-36, 1/200) for 30 minutes at room temperature. The detection was performed using an HRP conjugated compact polymer system. DAB was used as the chromogen. Tissues were counterstained with hematoxylin and mounted with DPX.



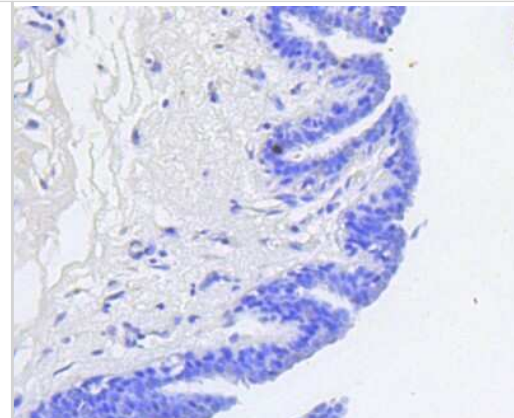
Immunocytochemistry/Immunofluorescence: RB1 [p Ser807] Antibody (SR3-82) [NBP2-67338] - Staining Phospho-Rb(S807) in A549 cells (green). The nuclear counter stain is DAPI (blue). Cells were fixed in paraformaldehyde, permeabilised with 0.25% Triton X100/PBS.



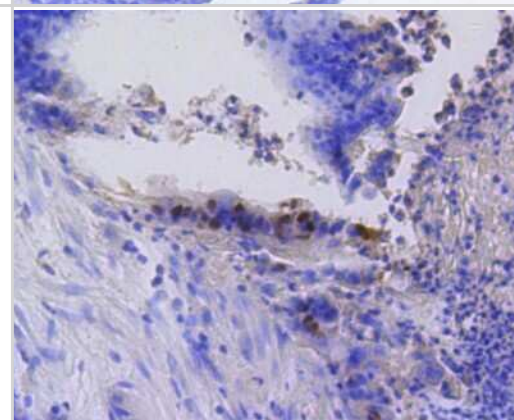
Immunocytochemistry/Immunofluorescence: RB1 [p Ser807] Antibody (SR3-82) [NBP2-67338] - Staining Phospho-Rb(S807) in MCF-7 cells (green). The nuclear counter stain is DAPI (blue). Cells were fixed in paraformaldehyde, permeabilised with 0.25% Triton X100/PBS.



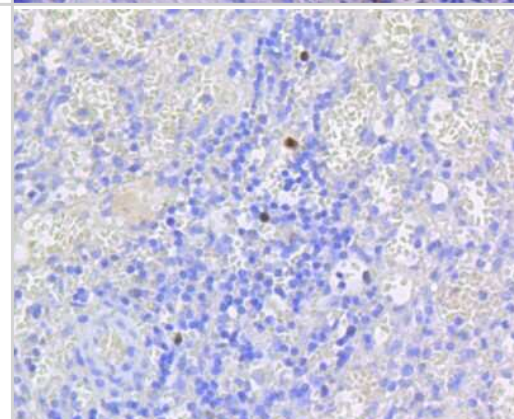
Immunohistochemistry-Paraffin: RB1 [p Ser807] Antibody (SR3-82) [NBP2-67338] - Analysis of paraffin-embedded human breast carcinoma tissue using anti-Phospho-Rb(S807) antibody. Counter stained with hematoxylin.



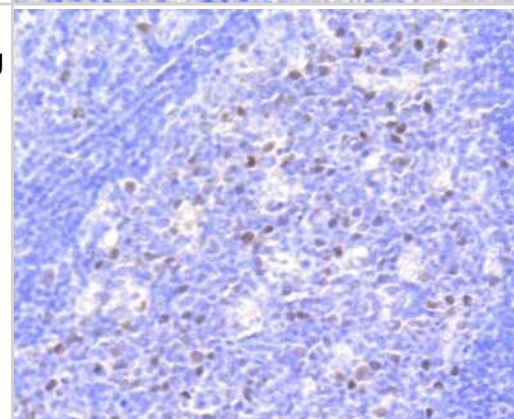
Immunohistochemistry-Paraffin: RB1 [p Ser807] Antibody (SR3-82) [NBP2-67338] - Analysis of paraffin-embedded human colon cancer tissue using anti-Phospho-Rb(S807) antibody. Counter stained with hematoxylin.



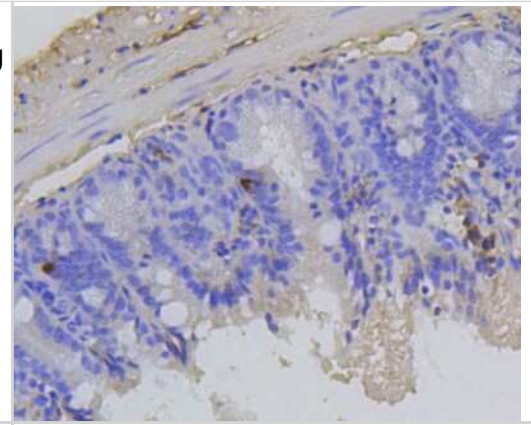
Immunohistochemistry-Paraffin: RB1 [p Ser807] Antibody (SR3-82) [NBP2-67338] - Analysis of paraffin-embedded human spleen tissue using anti-Phospho-Rb(S807) antibody. Counter stained with hematoxylin.



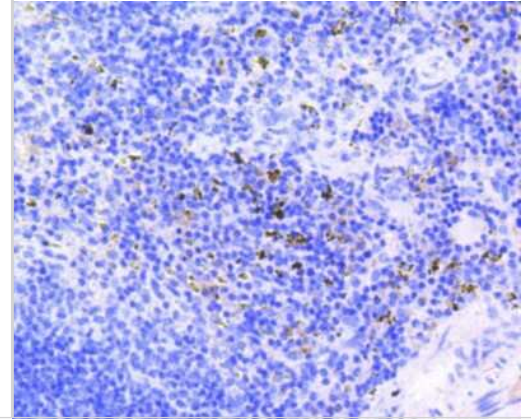
Immunohistochemistry-Paraffin: RB1 [p Ser807] Antibody (SR3-82) [NBP2-67338] - Analysis of paraffin-embedded human tonsil tissue using anti-Phospho-Rb(S807) antibody. Counter stained with hematoxylin.



Immunohistochemistry-Paraffin: RB1 [p Ser807] Antibody (SR3-82) [NBP2-67338] - Analysis of paraffin-embedded mouse colon tissue using anti-Phospho-Rb(S807) antibody. Counter stained with hematoxylin.



Immunohistochemistry-Paraffin: RB1 [p Ser807] Antibody (SR3-82) [NBP2-67338] - Analysis of paraffin-embedded mouse spleen tissue using anti-Phospho-Rb(S807) antibody. Counter stained with hematoxylin.







### **Novus Biologicals USA**

10730 E. Briarwood Avenue  
Centennial, CO 80112  
USA  
Phone: 303.730.1950  
Toll Free: 1.888.506.6887  
Fax: 303.730.1966  
nb-customerservice@bio-techne.com

### **Bio-Techne Canada**

21 Canmotor Ave  
Toronto, ON M8Z 4E6  
Canada  
Phone: 905.827.6400  
Toll Free: 855.668.8722  
Fax: 905.827.6402  
canada.inquires@bio-techne.com

### **Bio-Techne Ltd**

19 Barton Lane  
Abingdon Science Park  
Abingdon, OX14 3NB, United Kingdom  
Phone: (44) (0) 1235 529449  
Free Phone: 0800 37 34 15  
Fax: (44) (0) 1235 533420  
info.EMEA@bio-techne.com

### **General Contact Information**

[www.novusbio.com](http://www.novusbio.com)  
Technical Support: nb-technical@bio-techne.com  
Orders: nb-customerservice@bio-techne.com  
General: novus@novusbio.com

### **Limitations**

This product is for research use only and is not approved for use in humans or in clinical diagnosis. Primary Antibodies are guaranteed for 1 year from date of receipt.

For more information on our 100% guarantee, please visit [www.novusbio.com/guarantee](http://www.novusbio.com/guarantee)

Earn gift cards/discounts by submitting a review: [www.novusbio.com/reviews/submit/NBP2-67338](http://www.novusbio.com/reviews/submit/NBP2-67338)

Earn gift cards/discounts by submitting a publication using this product:  
[www.novusbio.com/publications](http://www.novusbio.com/publications)

