

# Product Datasheet

## MEK2 Antibody (SR13-07) NBP2-67332

Unit Size: 100 ul

Store at 4C short term. Aliquot and store at -20C long term. Avoid freeze-thaw cycles.

[www.novusbio.com](http://www.novusbio.com)



[technical@novusbio.com](mailto:technical@novusbio.com)

Protocols, Publications, Related Products, Reviews, Research Tools and Images at:  
[www.novusbio.com/NBP2-67332](http://www.novusbio.com/NBP2-67332)

Updated 1/3/2023 v.20.1

Earn rewards for product  
reviews and publications.

Submit a publication at [www.novusbio.com/publications](http://www.novusbio.com/publications)

Submit a review at [www.novusbio.com/reviews/destination/NBP2-67332](http://www.novusbio.com/reviews/destination/NBP2-67332)



**NBP2-67332**

MEK2 Antibody (SR13-07)

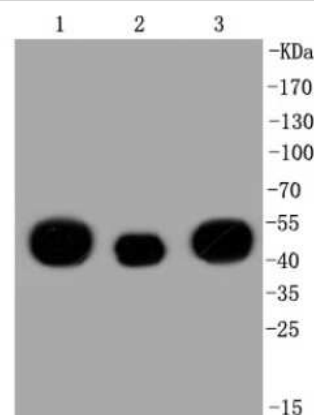
Product Information	
Unit Size	100 ul
Concentration	1 mg/ml
Storage	Store at 4C short term. Aliquot and store at -20C long term. Avoid freeze-thaw cycles.
Clonality	Monoclonal
Clone	SR13-07
Preservative	0.05% Sodium Azide
Isotype	IgG
Purity	Protein A purified
Buffer	TBS (pH7.4), 0.05% BSA, 40% Glycerol

Product Description	
Host	Rabbit
Gene Symbol	MAP2K2
Species	Human, Mouse, Rat, Zebrafish
Immunogen	Recombinant protein within Human MEK2 aa 1-393 / 393. (SwissProt: P36507 Human; SwissProt: Q02750 Human; SwissProt: P31938 Mouse; SwissProt: Q63932 Mouse; SwissProt: P36506 Rat; SwissProt: Q01986 Rat)

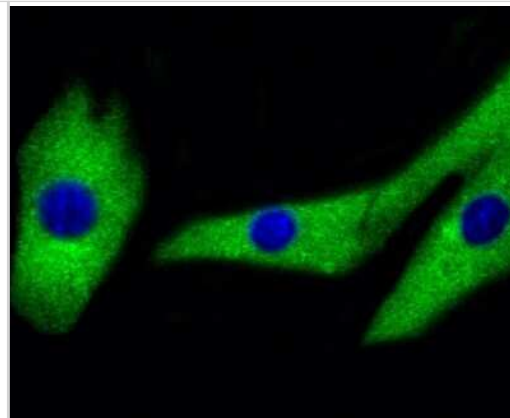
Product Application Details	
Applications	Western Blot, Immunocytochemistry/ Immunofluorescence, Immunohistochemistry, Immunohistochemistry-Paraffin, Immunoprecipitation
Recommended Dilutions	Western Blot 1:1000-1:5000, Immunohistochemistry, Immunocytochemistry/ Immunofluorescence 1:50-1:200, Immunoprecipitation, Immunohistochemistry-Paraffin 1:200

**Images**

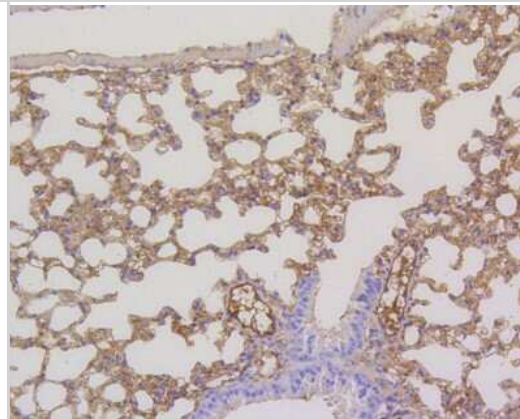
Western Blot: MEK2 Antibody (SR13-07) [NBP2-67332] - Western blot analysis of MEK2 on different lysates. Proteins were transferred to a PVDF membrane and blocked with 5% BSA in PBS for 1 hour at room temperature. The primary antibody (1/500) was used in 5% BSA at room temperature for 2 hours. Goat Anti-Rabb



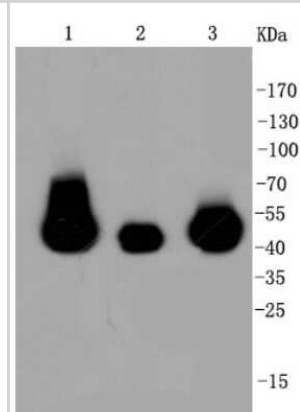
**Immunocytochemistry/Immunofluorescence: MEK2 Antibody (SR13-07) [NBP2-67332]** - Staining MEK1/2 in NIH/3T3 cells (green). The nuclear counter stain is DAPI (blue). Cells were fixed in paraformaldehyde, permeabilised with 0.25% Triton X100/PBS.



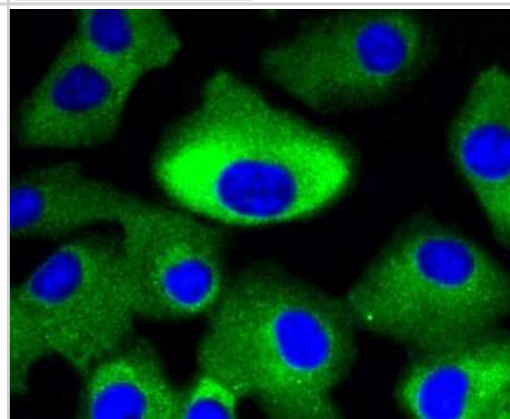
**Immunohistochemistry-Paraffin: MEK2 Antibody (SR13-07) [NBP2-67332]** - Immunohistochemical analysis of paraffin-embedded mouse lung tissue using anti-MEK2 antibody. The section was pre-treated using heat mediated antigen retrieval with Tris-EDTA buffer (pH 8.0-8.4) for 20 minutes. The tissues were blocked in 5% BSA for 30 minutes at room temperature, washed with ddH<sub>2</sub>O and PBS, and then probed with the primary antibody (ET1602-3, 1/200) for 30 minutes at room temperature. The detection was performed using an HRP conjugated compact polymer system. DAB was used as the chromogen. Tissues were counterstained with hematoxylin and mounted with DPX.



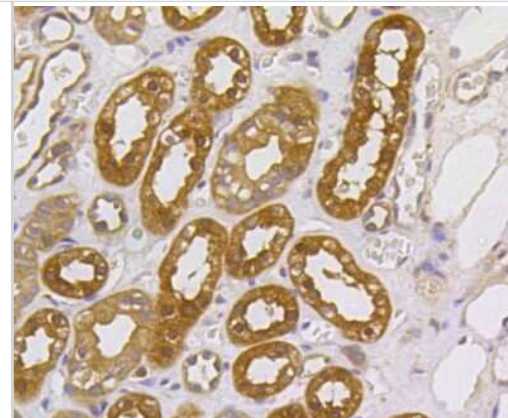
**Western Blot: MEK2 Antibody (SR13-07) [NBP2-67332]** - Analysis of MEK1/2 on different cell lysates using anti-MEK1/2 antibody at 1/1,000 dilution. Positive control: Lane 1: HepG2 Lane 2: PC12 Lane 3: NIH/3T3



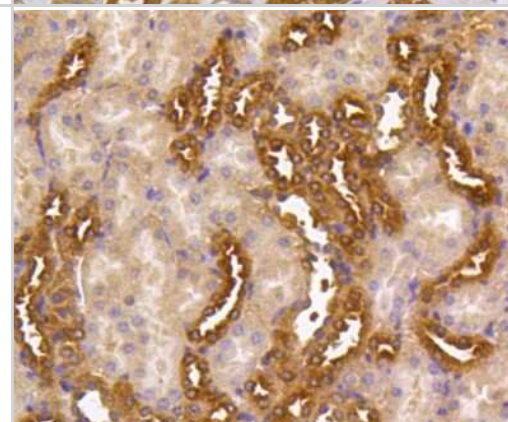
**Immunocytochemistry/Immunofluorescence: MEK2 Antibody (SR13-07) [NBP2-67332]** - Staining MEK1/2 in A549 cells (green). The nuclear counter stain is DAPI (blue). Cells were fixed in paraformaldehyde, permeabilised with 0.25% Triton X100/PBS.



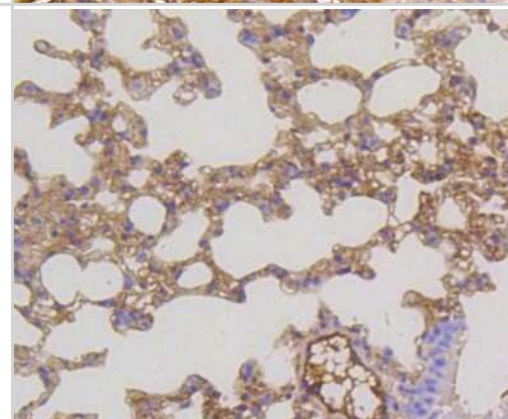
Immunohistochemistry-Paraffin: MEK2 Antibody (SR13-07) [NBP2-67332] - Analysis of paraffin-embedded human kidney tissue using anti-MEK1/2 antibody. Counter stained with hematoxylin.



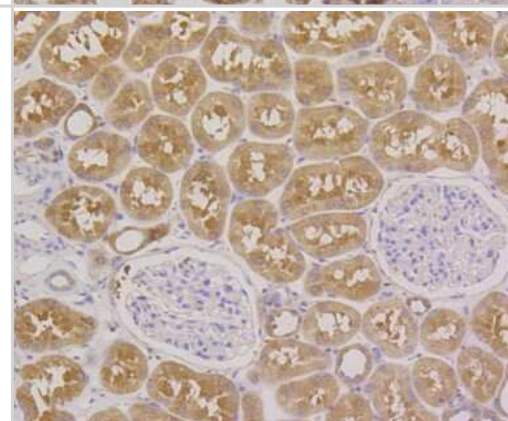
Immunohistochemistry-Paraffin: MEK2 Antibody (SR13-07) [NBP2-67332] - Analysis of paraffin-embedded mouse kidney tissue using anti-MEK1/2 antibody. Counter stained with hematoxylin.



Immunohistochemistry-Paraffin: MEK2 Antibody (SR13-07) [NBP2-67332] - Analysis of paraffin-embedded mouse lung tissue using anti-MEK1/2 antibody. Counter stained with hematoxylin.

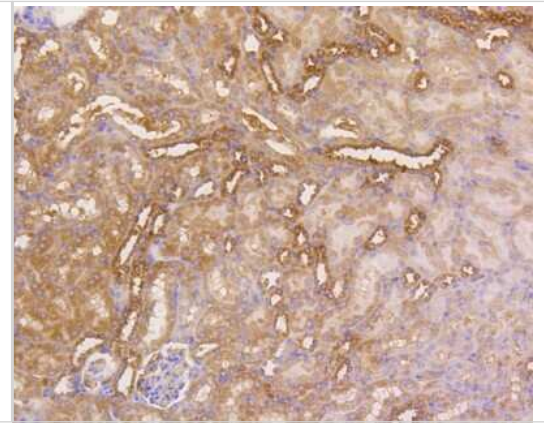


Immunohistochemistry-Paraffin: MEK2 Antibody (SR13-07) [NBP2-67332] - Immunohistochemical analysis of paraffin-embedded human kidney tissue using anti-MEK2 antibody. The section was pre-treated using heat mediated antigen retrieval with Tris-EDTA buffer (pH 8.0-8.4) for 20 minutes. The tissues were blocked in 5% BSA for 30 minutes at room temperature, washed with ddH2O and PBS, and then probed with the primary antibody (ET1602-3, 1/50) for 30 minutes at room temperature. The detection was performed using an HRP conjugated compact polymer system. DAB was used as the chromogen. Tissues were counterstained with hematoxylin and mounted with DPX.





**Immunohistochemistry-Paraffin: MEK2 Antibody (SR13-07) [NBP2-67332]** - Immunohistochemical analysis of paraffin-embedded mouse kidney tissue using anti-MEK2 antibody. The section was pre-treated using heat mediated antigen retrieval with Tris-EDTA buffer (pH 8.0-8.4) for 20 minutes. The tissues were blocked in 5% BSA for 30 minutes at room temperature, washed with ddH<sub>2</sub>O and PBS, and then probed with the primary antibody (ET1602-3, 1/50) for 30 minutes at room temperature. The detection was performed using an HRP conjugated compact polymer system. DAB was used as the chromogen. Tissues were counterstained with hematoxylin and mounted with DPX.





### **Novus Biologicals USA**

10730 E. Briarwood Avenue  
Centennial, CO 80112  
USA  
Phone: 303.730.1950  
Toll Free: 1.888.506.6887  
Fax: 303.730.1966  
nb-customerservice@bio-techne.com

### **Bio-Techne Canada**

21 Canmotor Ave  
Toronto, ON M8Z 4E6  
Canada  
Phone: 905.827.6400  
Toll Free: 855.668.8722  
Fax: 905.827.6402  
canada.inquires@bio-techne.com

### **Bio-Techne Ltd**

19 Barton Lane  
Abingdon Science Park  
Abingdon, OX14 3NB, United Kingdom  
Phone: (44) (0) 1235 529449  
Free Phone: 0800 37 34 15  
Fax: (44) (0) 1235 533420  
info.EMEA@bio-techne.com

### **General Contact Information**

[www.novusbio.com](http://www.novusbio.com)  
Technical Support: [nb-technical@bio-techne.com](mailto:nb-technical@bio-techne.com)  
Orders: [nb-customerservice@bio-techne.com](mailto:nb-customerservice@bio-techne.com)  
General: [novus@novusbio.com](mailto:novus@novusbio.com)

### **Limitations**

This product is for research use only and is not approved for use in humans or in clinical diagnosis. Primary Antibodies are guaranteed for 1 year from date of receipt.

For more information on our 100% guarantee, please visit [www.novusbio.com/guarantee](http://www.novusbio.com/guarantee)

Earn gift cards/discounts by submitting a review: [www.novusbio.com/reviews/submit/NBP2-67332](http://www.novusbio.com/reviews/submit/NBP2-67332)

Earn gift cards/discounts by submitting a publication using this product:  
[www.novusbio.com/publications](http://www.novusbio.com/publications)

